



VIDEO TUTORIAL

### Important!

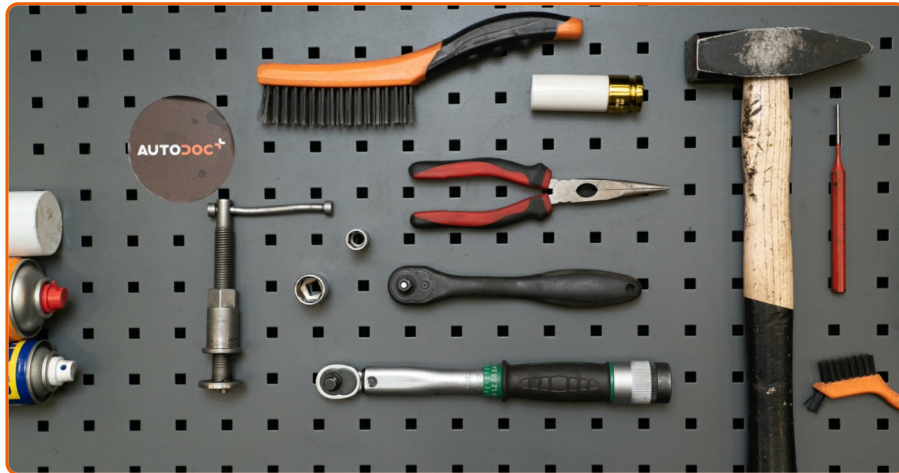
This replacement procedure can be used for:

FIAT PANDA (169\_) 1.2 (169.AXB11, 169.AXB1A), FIAT PANDA (169\_) 1.2 4x4 (169.AXB2A), FIAT PANDA (169\_) 1.2 LPG (169.AXB1A), FIAT PANDA Van (169\_) 1.2, FIAT PANDA Van (169\_) 1.2 4x4, FIAT PANDA Van (169\_) 1.2 LPG, FIAT PANDA Van (169\_) 1.2 Natural Power, FIAT PUNTO (188\_) 1.2 60 (188.030, .050, .130, .150, .230, .250), FIAT PUNTO (188\_) 1.2 Bifuel, FIAT PUNTO (188\_) 1.2 Bipower (188BXA1A), FIAT PUNTO (188\_) 1.2 Natural Power, FIAT PUNTO Van (188\_) 1.2 60

---

The steps may slightly vary depending on the car design.

## REPLACEMENT: BRAKE DISCS – FIAT PANDA 169. TOOLS YOU MIGHT NEED:



- Wire brush
- Nylon cleaning brush
- WD-40 spray
- All-purpose cleaning spray
- Brake cleaner
- Copper grease
- Torque wrench
- Drive socket # 12
- Drive socket # 18
- Wheel impact socket #17
- Brake caliper wind back tool
- Ratchet wrench
- Crow bar
- Pin punch
- Rubber mallet
- Hammer
- Round-nose pliers
- Wheel chock

## Replacement: brake discs – Fiat Panda 169. AUTODOC recommends:

- Replace the brake disks on the car Fiat Panda 169 in complete set for each axis. Regardless of the state of components. This will ensure even braking.
- The replacement procedure is identical for both brake disks on the same axle.
- When changing the brake discs, always replace the brake pads.
- Please note: all work on the car – Fiat Panda 169 – should be done with the engine switched off.

## CARRY OUT REPLACEMENT IN THE FOLLOWING ORDER:

1



Open the bonnet. Unscrew the brake fluid reservoir cap.

2



Secure the wheels with chocks.

3



Loosen the wheel mounting bolts. Use wheel impact socket #17.

4



Raise the front of the car and secure on supports.

5



Unscrew the wheel bolts.

## AUTODOC recommends:

- Warning! To avoid injury, hold the wheel while unscrewing the fastening bolts. Fiat Panda 169

6



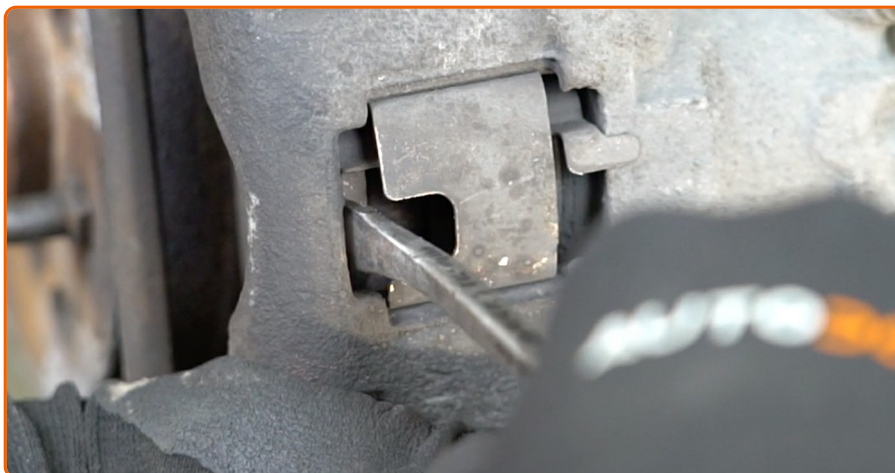
Remove the wheel.

7



Clean the brake caliper fasteners. Use a wire brush. Use WD-40 spray. Use all-purpose cleaning spray.

8



Spread the brake pads. Use a crowbar.

9



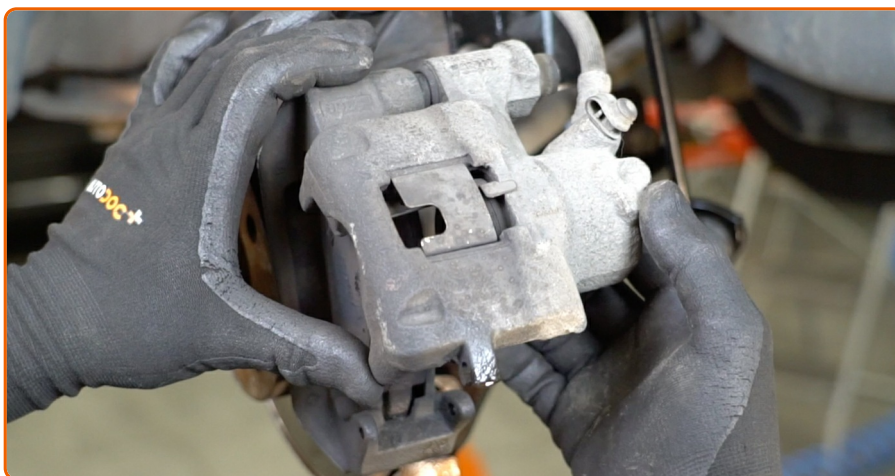
Remove the lock pin retainer clip. Use round-nose pliers.

10



Remove the brake caliper cotter pin. Use a pin punch. Use a hammer.

11



Lift the caliper up.

12



Remove the brake pads.

13



Clean the brake caliper bracket fasteners. Use a wire brush. Use WD-40 spray.

14



Unscrew the caliper bracket fastening. Use a drive socket #18. Use a ratchet wrench.

15



Remove the brake caliper together with its bracket.

## Replacement: brake discs – Fiat Panda 169. Tip from AUTODOC experts:

- Tie the caliper to the suspension or to the body with a wire without disconnecting from the brake hose to prevent depressurization of the brake system.
- Make sure that the brake caliper is not hanging on the brake hose.
- Don't press the brake pedal after the brake caliper has been removed. As a result, the piston can fall out from the brake cylinder, and brake fluid leakage and depressurization of the system may occur.
- Check the brake caliper bracket, brake caliper guide pins and boots. Clean them. Replace, if necessary.

16



Clean the brake disc fasteners. Use a wire brush. Use WD-40 spray.

17



Unscrew the brake disc fastening. Use a drive socket #12. Use a ratchet wrench.

18



Remove the brake disc. Use a rubber mallet.

19



Clean the hub. Use a wire brush. Treat the contacting surface. Use copper grease.

20



Clean the brake disk surface. Use all-purpose cleaning spray.

21



Install the brake disc.

22



Tighten the brake disc fastening. Use a drive socket #12. Use a torque wrench. Tighten it to 8 Nm torque.

23



Install the brake caliper together with its bracket.

24



Tighten the brake caliper bracket. Use a drive socket #18. Use a torque wrench. Tighten it to 70 Nm torque.

25



Treat the brake caliper piston. Use a nylon cleaning brush. Use a brake cleaner.

### AUTODOC recommends:

- Replacement: brake discs – Fiat Panda 169. After applying the spray, wait a few minutes.

26



Press in the brake caliper piston. Use brake caliper wind back tool.

27



Install the brake pads.

28



Install the brake caliper and fix it.

29



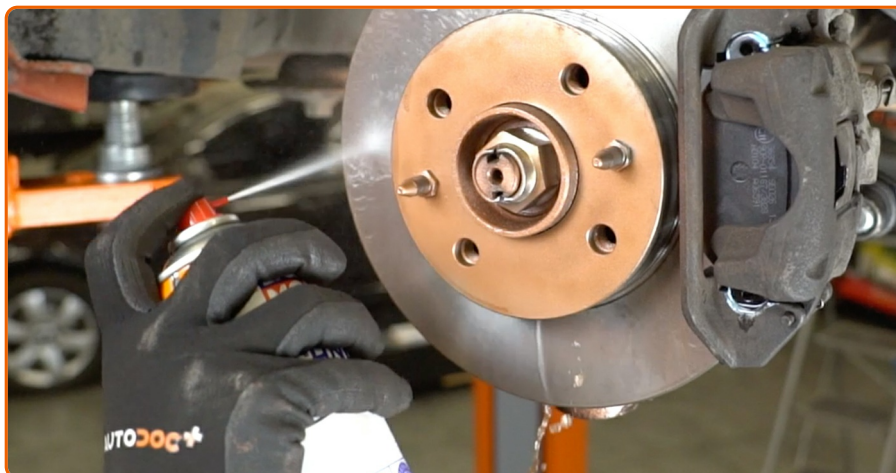
Install the brake caliper cotter pin. Use a pin punch. Use a hammer.

30



Install the lock pin retainer clip. Use round-nose pliers.

31

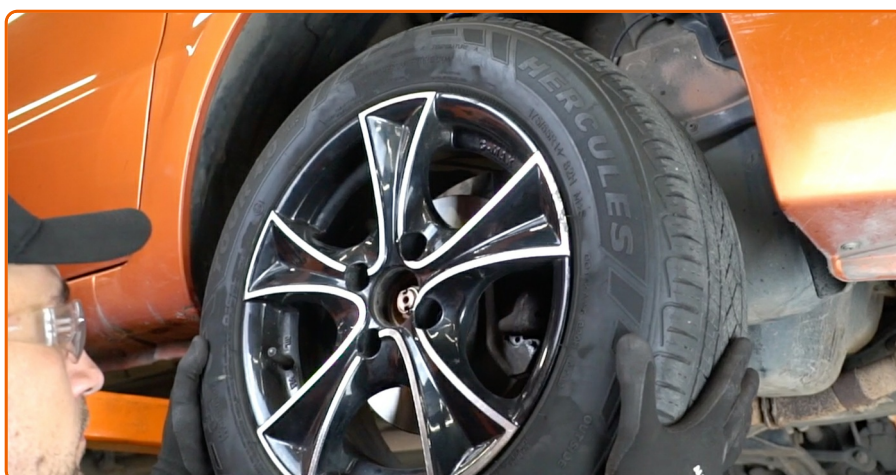


Treat the surface where the brake disc contacts the wheel rim. Use copper grease. Clean the brake disk surface. Use a brake cleaner.

## AUTODOC recommends:

- Replacement: brake discs – Fiat Panda 169. After applying the spray, wait a few minutes.

32



Install the wheel.

## AUTODOC recommends:

- Important! Hold the wheel while screwing in the fastening bolts. Fiat Panda 169

33



Screw in the wheel bolts. Use wheel impact socket #17.

34



Lower the car and working in a cross order, tighten the wheel bolts. Use wheel impact socket #17. Use a torque wrench. Tighten it to 120 Nm torque.

35



Remove the jacks and chocks.

## Replacement: brake discs – Fiat Panda 169. Tip from AUTODOC experts:

- Check the brake fluid level in the expansion tank and refill if necessary.

36



Tighten the brake fluid reservoir cap. Close the hood.

## Replacement: brake discs – Fiat Panda 169. Tip from AUTODOC experts:

- Without starting the engine, press the brake pedal several times until you feel significant resistance.

**DID YOU FIND THESE INSTRUCTIONS  
HELPFUL?**

**YES**

**NO**



**BECOME A MEMBER OF AUTODOC CLUB!**

## AUTODOC — TOP QUALITY AND AFFORDABLE CAR PARTS ONLINE

AUTODOC MOBILE APP: GREAT DEALS AND CONVENIENT SHOPPING



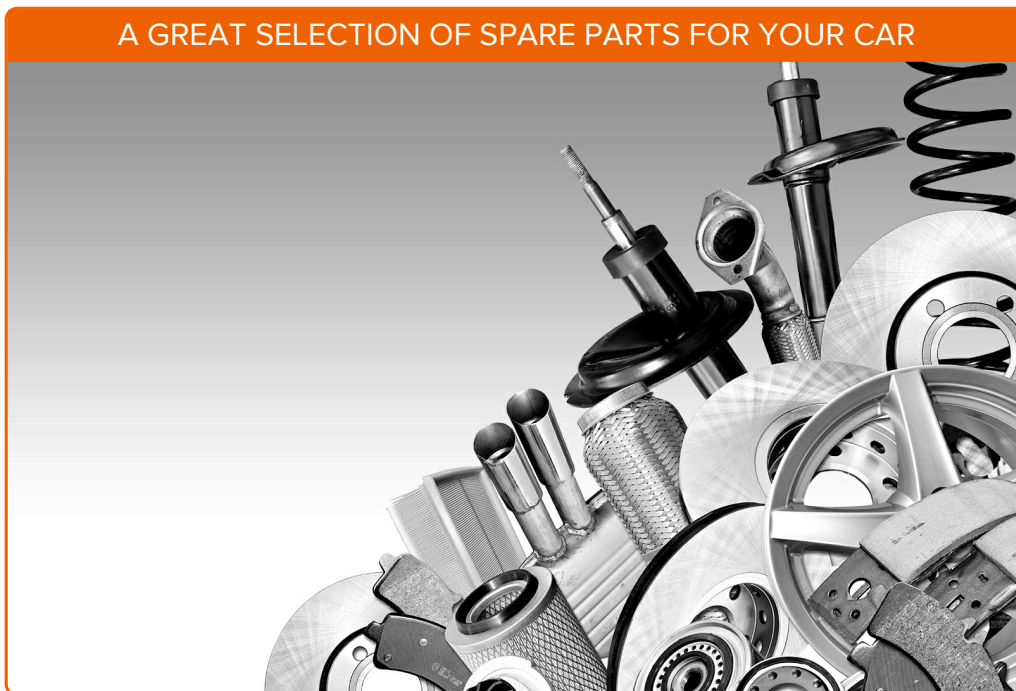
**AUTODOC APP**

**Download**

 Google play

 App Store

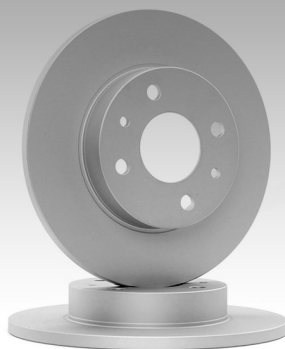
A GREAT SELECTION OF SPARE PARTS FOR YOUR CAR



## BUY SPARE PARTS FOR FIAT



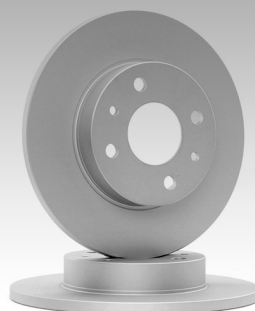
## BRAKE DISCS: A WIDE SELECTION



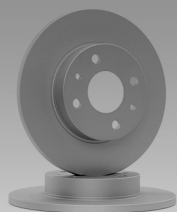
CHOOSE CAR PARTS FOR FIAT PANDA 169



BRAKE DISCS FOR FIAT: BUY NOW



## BRAKE DISCS FOR FIAT PANDA 169: THE BEST DEALS & OFFERS



### Disclaimer:

The document contains only general recommendations that may be useful for you when you perform repair or replacement work. AutoDoc shall not be liable for any loss, injury, damage of property occurring in the repair or replacement process due to incorrect use or misinterpretation of the provided information.

AutoDoc shall not be liable for any possible mistakes and uncertainties in this guide. The information provided is for information purposes only and cannot replace advice from specialists.

AutoDoc shall not be liable for incorrect or hazardous usage of equipment, tools and car parts. AutoDoc strongly recommends to be careful and observe the safety rules when performing repair or replacement works. Remember: usage of low quality auto parts does not guarantee you the appropriate level of road safety.

© Copyright 2018 – All the contents of this website, in particular texts, photographs and graphics, are protected by copyright. All rights, including reproduction, publication, editing and translation rights, are reserved by Autodoc GmbH.