



How to change  
windscreen wiper arm on  
**Toyota Yaris P1** –  
replacement guide

## VIDEO TUTORIAL

** Important!**

This replacement procedure can be used for:

TOYOTA Yaris Hatchback (\_P1\_) 1.0 (SCP10\_), TOYOTA Yaris Hatchback (\_P1\_) 1.5 (NCP13\_), TOYOTA Yaris Hatchback (\_P1\_) 1.4 D-4D (NLP10\_), TOYOTA Yaris Hatchback (\_P1\_) 1.3 (SCP12\_)

The steps may slightly vary depending on the car design.

REPLACEMENT: WINDSCREEN WIPER ARM – TOYOTA YARIS P1. TOOLS YOU'LL NEED:



- Wire brush
- WD-40 spray
- Copper grease
- Torque wrench
- Drive socket # 14
- Ratchet wrench
- Clip removal tool

**BUY TOOLS**

Replacement: windscreen wiper arm – Toyota Yaris P1. AUTODOC recommends:

- Replace the wiper arms in pairs.
- Don't mix up the wiper arms on the driver's and passenger's side.
- The replacement procedure is the same for both wiper arms.
- Please note: all work on the car – Toyota Yaris P1 – should be done with the engine switched off.

**CARRY OUT REPLACEMENT IN THE FOLLOWING ORDER:**

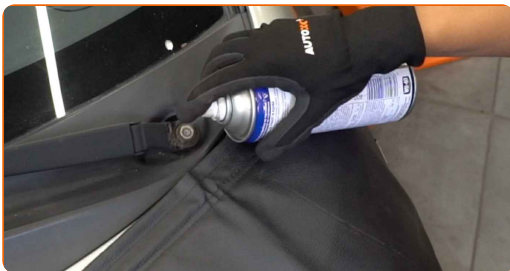
1

Remove the windscreen wiper arm nut covers. Use a clip removal tool.

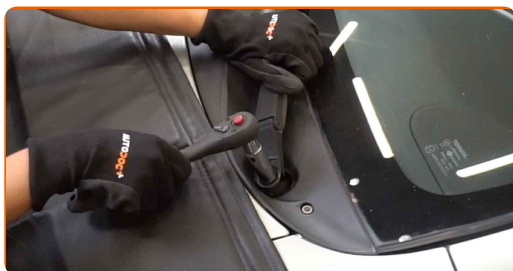


2

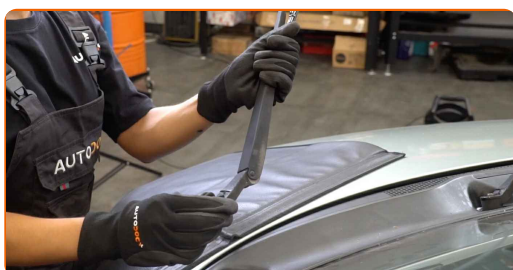
Clean the fasteners of the wiper arms. Use a wire brush. Use WD-40 spray.



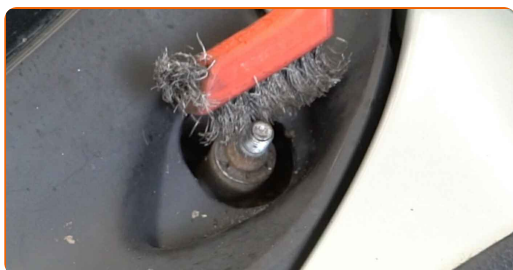
**3** Unscrew the fasteners of the windscreen wiper arms. Use a drive socket #14. Use a ratchet wrench.



**4** Remove the wiper arms.



**5** Clean the pivots of the windscreen wiper arms. Use a wire brush. Use WD-40 spray.



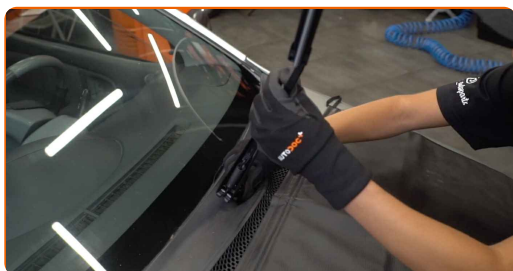
**6** Treat the pivots of the windscreen wiper arms. Use copper grease.



**7** Attach the wiper blades to the new arms.



**8** Reinstall the wiper arms.



Replacement: windscreen wiper arm – Toyota Yaris P1. Professionals recommend:

- Make sure not to mix up the wiper arms on the driver's and passenger's sides.

**9** Tighten the wiper arm fasteners. Use a drive socket #14. Use a torque wrench. Tighten it to 17 Nm torque.

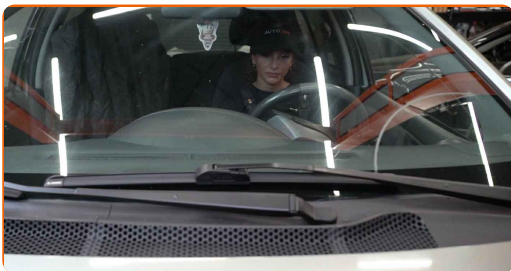


**10** Install the nut covers of the windscreen wiper arms.

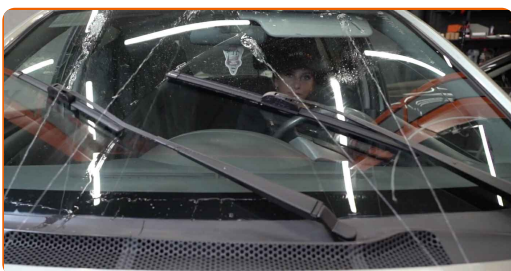


**11**

Switch on the ignition.

**12**

After installation check the wipers performance. The blades shouldn't intersect or bump against the windshield seal.

**13**

Switch off the ignition.

**WELL DONE!** **VIEW MORE TUTORIALS**

# AUTODOC – TOP QUALITY AND AFFORDABLE CAR PARTS ONLINE

**AUTODOC MOBILE APP: GREAT DEALS AND CONVENIENT SHOPPING**



**+ AUTODOC**

GET IT ON  
**Google Play**

Download on the  
**App Store**

**Download**

**A GREAT SELECTION OF SPARE PARTS FOR YOUR CAR**

**BUY SPARE PARTS FOR TOYOTA**

**WINDSCREEN WIPER ARM: A WIDE SELECTION**



**CHOOSE CAR PARTS FOR TOYOTA YARIS P1**

**WINDSCREEN WIPER ARM FOR TOYOTA: BUY NOW**

**WINDSCREEN WIPER ARM FOR TOYOTA YARIS P1: THE  
BEST DEALS & OFFERS**

### **DISCLAIMER:**

The document contains only general recommendations that may be useful for you when you perform repair or replacement work. AUTODOC shall not be liable for any loss, injury, damage of property occurring in the repair or replacement process due to incorrect use or misinterpretation of the provided information.

AUTODOC shall not be liable for any possible mistakes and uncertainties in this guide. The information provided is for information purposes only and cannot replace advice from specialists.

AUTODOC shall not be liable for incorrect or hazardous usage of equipment, tools and car parts. AUTODOC strongly recommends to be careful and observe the safety rules when performing repair or replacement works. Remember: usage of low quality auto parts does not guarantee you the appropriate level of road safety.

© Copyright 2022 – All the contents of this website, in particular texts, photographs and graphics, are protected by copyright. All rights, including reproduction, publication, editing and translation rights, are reserved by AUTODOC GmbH.