



How to change  
headlights on **Mercedes**  
**Vito W638** –  
replacement guide

## VIDEO TUTORIAL



### Important!

This replacement procedure can be used for:

MERCEDES-BENZ Vito Minibus (W638) 108 D 2.3 (638.164), MERCEDES-BENZ Vito Minibus (W638) 110 TD 2.3 (638.174), MERCEDES-BENZ Vito Minibus (W638) 113 2.0 (638.114, 638.194), MERCEDES-BENZ Vito Minibus (W638) 114 2.3 (638.134, 638.194), MERCEDES-BENZ Vito Van (W638) 108 D 2.3 (638.064, 638.068), MERCEDES-BENZ Vito Van (W638) 110 D 2.3 (638.074, 638.078), MERCEDES-BENZ Vito Van (W638) 113 2.0 (638.014, 638.094), MERCEDES-BENZ Vito Van (W638) 114 2.3 (638.034, 638.094), MERCEDES-BENZ Vito Minibus (W638) 108 CDI 2.2 (638.194), MERCEDES-BENZ Vito Minibus (W638) 110 CDI 2.2 (638.194), MERCEDES-BENZ Vito Minibus (W638) 112 CDI 2.2 (638.194), MERCEDES-BENZ Vito Van (W638) 108 CDI 2.2 (638.094), MERCEDES-BENZ Vito Van (W638) 110 CDI 2.2 (638.094), MERCEDES-BENZ Vito Van (W638) 112 CDI 2.2 (638.094)

The steps may slightly vary depending on the car design.

REPLACEMENT: HEADLIGHTS – MERCEDES VITO  
W638. LIST OF THE TOOLS YOU'LL NEED:



- Electronic spray
- Round-nose pliers
- Phillips screwdriver
- Fender cover

**BUY TOOLS**

Replacement: headlights – Mercedes Vito W638. AUTODOC experts recommend:

- The replacement procedure is identical for the right and left headlight.
- All work should be done with the engine stopped.

## REPLACEMENT: HEADLIGHTS – MERCEDES VITO W638. TAKE THE FOLLOWING STEPS:

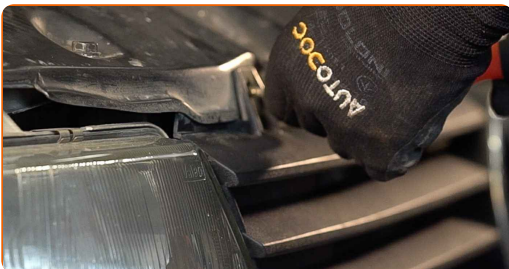
**1** Switch off the ignition.

**2** Open the hood.



**3** Use a fender protection cover to prevent damaging paintwork and plastic parts of the car.

**4** Unscrew the radiator grille fastener. Use a Phillips screwdriver.



5 Remove the radiator grille.



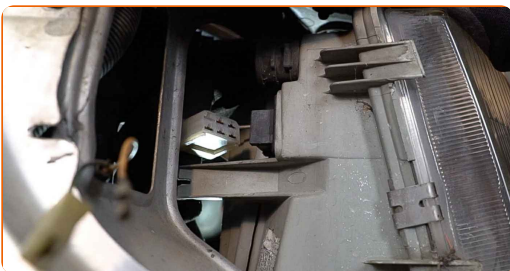
6 Remove the fastener of the turn indicator light. Use round-nose pliers.



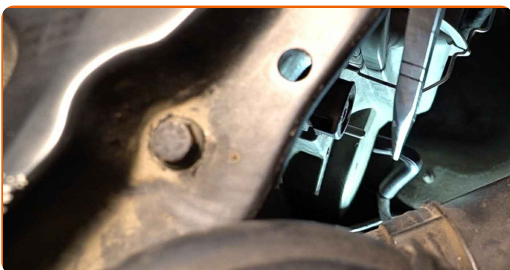
7 Remove the turn indicator light.



8 Unplug the connectors of the headlights.

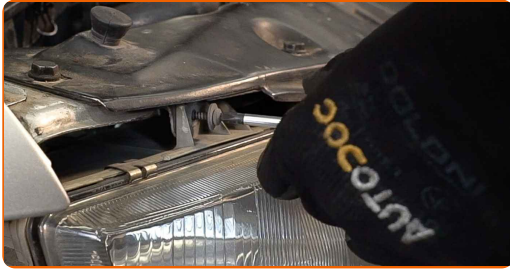


9 Detach the vacuum hose from the headlight adjuster. Use round-nose pliers.



10

Unscrew the headlight fasteners. Use a Phillips screwdriver.



11

Remove the headlight.



12

Detach the retainer of the headlight protective cover.



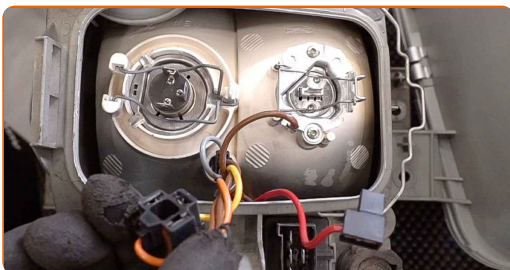
13

Remove the headlight rear cover.

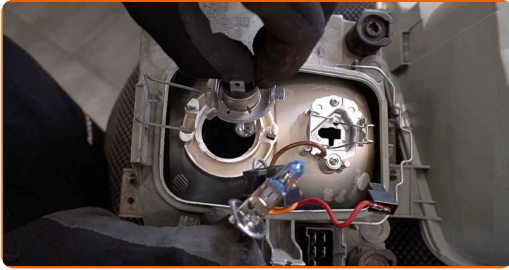


14

Unplug the connectors of the headlight bulbs.



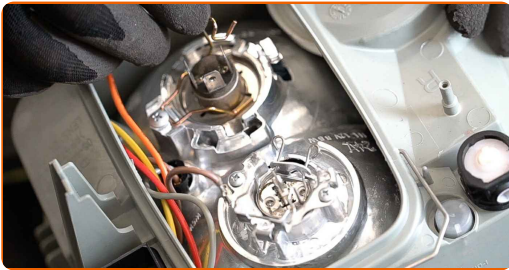
**15** Detach the retainers and remove the bulbs from the headlight.



Replacement: headlights – Mercedes Vito W638. Professionals recommend:

- Avoid touching the bulb glass. The finger marks left on it may cause failure.

**16** Install the bulbs into their mounting seats in the new headlight, and attach the retainers.



**17** Plug in the connectors of the headlight bulbs.



**18** Install and secure the headlight rear cover.



19 Attach the retainer of the headlight protective cover.



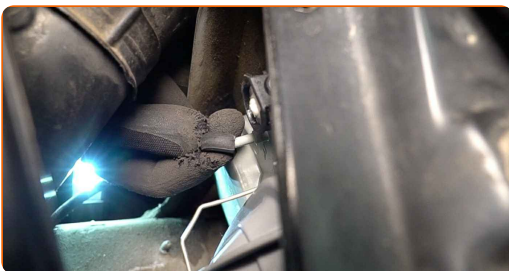
20 Install the new headlight.



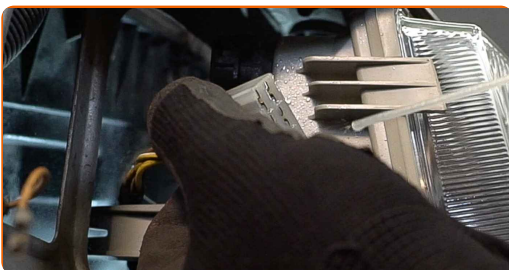
21 Screw in the headlight fasteners. Use a Phillips screwdriver.



22 Attach the vacuum hose to the headlight adjuster.



23 Treat the connectors of the headlights. Use electronic spray.

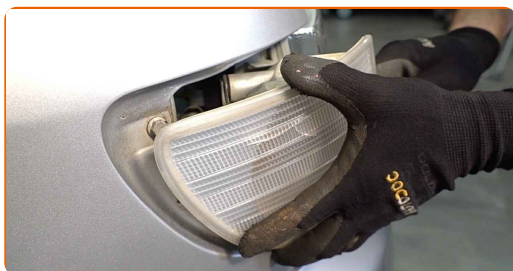




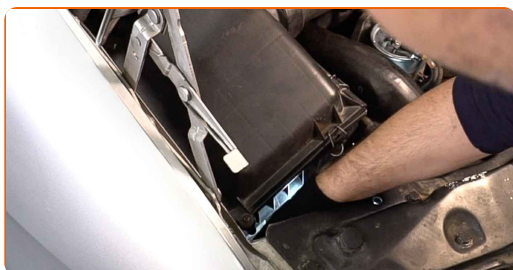
24 Plug in the connectors of the headlights.



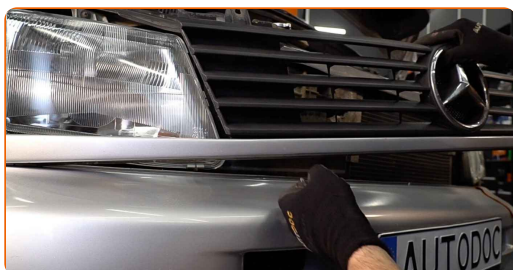
25 Install the turn indicator.



26 Attach the turn indicator fastener.



27 Install the radiator grille.



28 Screw in the fastener of the radiator grille. Use a Phillips screwdriver.



29 Remove the fender protection cover.

30 Close the hood.



31 Switch on the ignition.

32 Check whether the headlights function properly.



33 Switch off the ignition.



**WELL DONE!** 👍

[VIEW MORE TUTORIALS](#)

## AUTODOC – TOP QUALITY AND AFFORDABLE CAR PARTS ONLINE

AUTODOC MOBILE APP: GREAT DEALS AND CONVENIENT SHOPPING

**AUTODOC+**

GET IT ON  
Google Play

Download on the  
App Store

Download

**A GREAT SELECTION OF SPARE PARTS FOR YOUR CAR**

**BUY SPARE PARTS FOR MERCEDES**

**HEADLIGHTS: A WIDE SELECTION**

**CHOOSE CAR PARTS FOR MERCEDES VITO W638**

**HEADLIGHTS FOR MERCEDES: BUY NOW**

**HEADLIGHTS FOR MERCEDES VITO W638: THE BEST DEALS  
& OFFERS**

### **ⓘ DISCLAIMER:**

The document contains only general recommendations that may be useful for you when you perform repair or replacement work. AUTODOC shall not be liable for any loss, injury, damage of property occurring in the repair or replacement process due to incorrect use or misinterpretation of the provided information.

AUTODOC shall not be liable for any possible mistakes and uncertainties in this guide. The information provided is for information purposes only and cannot replace advice from specialists.

AUTODOC shall not be liable for incorrect or hazardous usage of equipment, tools and car parts. AUTODOC strongly recommends to be careful and observe the safety rules when performing repair or replacement works. Remember: usage of low quality auto parts does not guarantee you the appropriate level of road safety.

© Copyright 2021 – All the contents of this website, in particular texts, photographs and graphics, are protected by copyright. All rights, including reproduction, publication, editing and translation rights, are reserved by AUTODOC GmbH.