



How to change front  
door lock on **VW**

**Transporter VI Van (SGA,  
SGH)** – replacement  
guide

## SIMILAR VIDEO TUTORIAL



This video shows the replacement procedure of a similar car part on another vehicle

### Important!

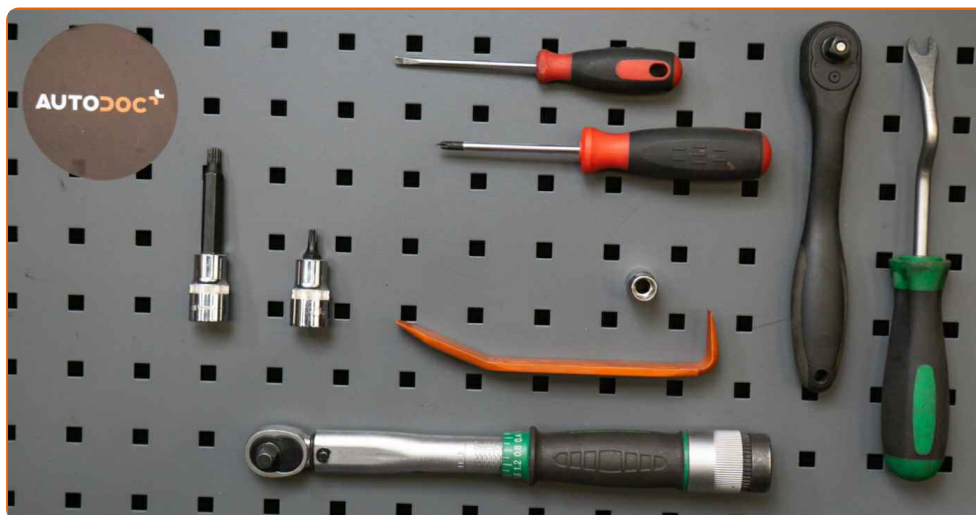
This replacement procedure can be used for:

VW Transporter VI Van (SGA, SGH) 2.0 TDI, VW Transporter VI Van (SGA, SGH) 2.0 TDI 4motion, VW Transporter VI Van (SGA, SGH) 2.0 TSI, VW Transporter VI Van (SGA, SGH) 2.0 TSI 4motion

The steps may slightly vary depending on the car design.

This tutorial was created based on the replacement procedure for a similar car part on: SEAT Ibiza III Hatchback (6L) 1.4 16V

**REPLACEMENT: DOOR LOCK – VW TRANSPORTER VI VAN (SGA, SGH). LIST OF THE TOOLS YOU'LL NEED:**



- Torque wrench
- Drive socket # 10
- Torx bit T20
- XZN socket bit # 8
- Ratchet wrench
- Painter's tape
- Flat Screwdriver
- Phillips screwdriver
- Clip removal tool
- Plastic trim tool

**Buy tools**

Replacement: door lock – VW Transporter VI Van (SGA, SGH). Tip from AUTODOC experts:

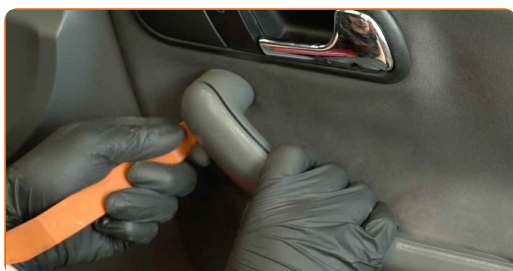
- The replacement procedure is identical for the locks on the left and right rear doors.
- Please note: all work on the car – VW Transporter VI Van (SGA, SGH) – should be done with the engine switched off.

## CARRY OUT REPLACEMENT IN THE FOLLOWING ORDER:

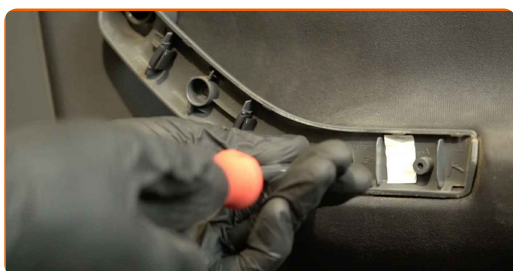
**1** Open the car door.



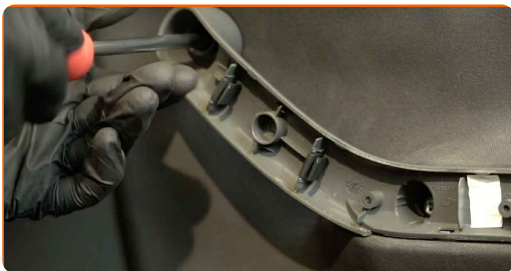
**2** Detach the door armrest panel. Use a plastic trim tool.



**3** Remove the door armrest screws. Use a Phillips screwdriver.



**4** Unscrew the door card fasteners. Use a Phillips screwdriver.



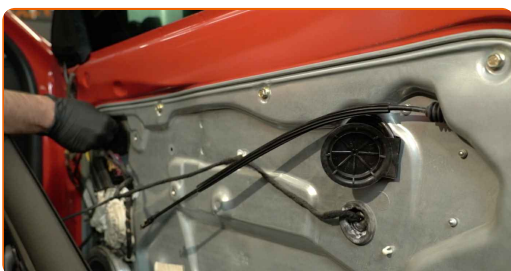
**5** Detach the door card. Use a plastic trim tool.



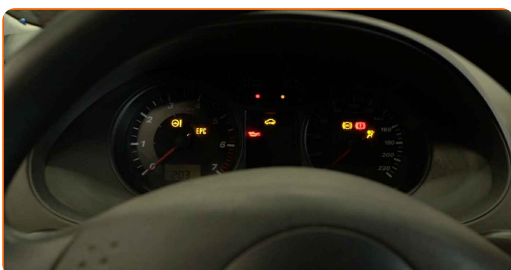
**AUTODOC recommends:**

- Replacement: door lock – VW Transporter VI Van (SGA, SGH). Do not use excessive force when removing the part as this may damage it.

**6** Remove the covers from the window raiser fasteners.



**7** Switch on the ignition.



**8** Lower the window glass.



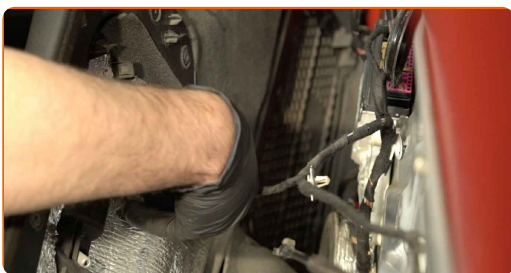
Replacement: door lock – VW Transporter VI Van (SGA, SGH). Tip:

- Continue lowering the window glass until its fasteners become visible.

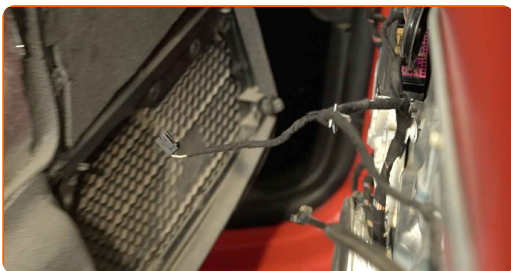
**9** Switch off the ignition.



**10** Detach the power window connector from the door card.

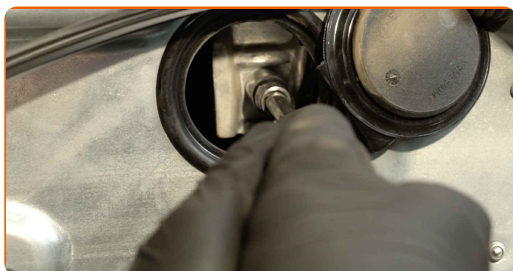


**11** Detach the door lock actuator cable.



12

Unscrew the window glass fasteners. Use a drive socket #10. Use a ratchet wrench.



Replacement: door lock – VW Transporter VI Van (SGA, SGH). Tip from AUTODOC experts:

- To avoid injury, hold the glass when unscrewing the fasteners.

13

Raise the window glass all the way up and secure it on the door frame with masking tape.



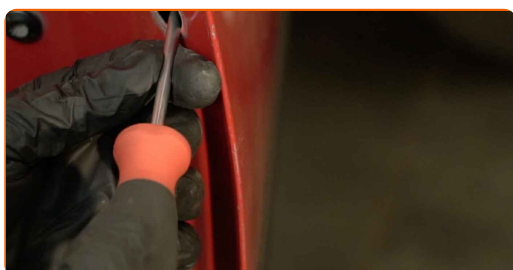
AUTODOC recommends:

- To avoid injury, hold the glass when raising it.

**14** Remove the cover from the exterior door handle fastener. Use a plastic trim tool.



**15** Unscrew the fastener of the exterior door handle. Use Torx T20. Use a ratchet wrench.



**16** Remove the cover from the exterior door handle fastener. Use a plastic trim tool.

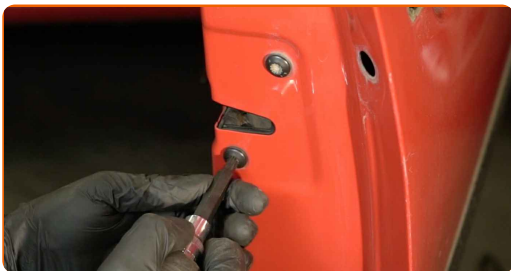


**17** Remove the handle-to-lock cable. Use a flat screwdriver.

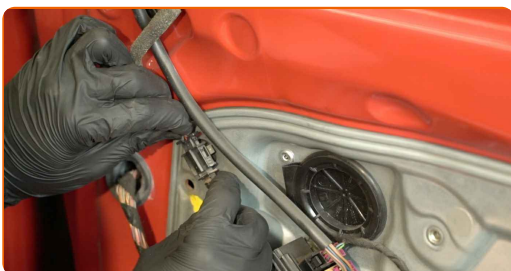




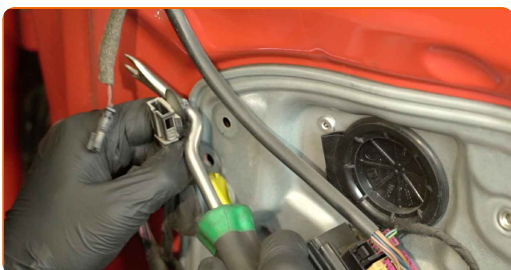
**18** Unscrew the door lock fasteners. Use XZN #8. Use a ratchet wrench.



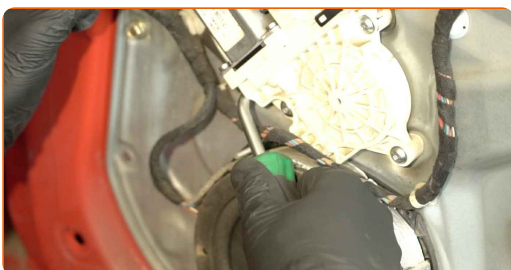
**19** Detach the mirror adjuster connector from the door.



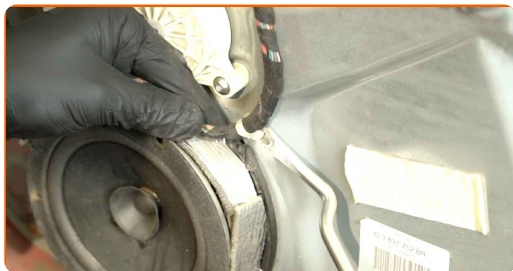
**20** Detach the wiring harness from the protective cover of the door. Use a clip removal tool.



**21** Detach the speaker connector.



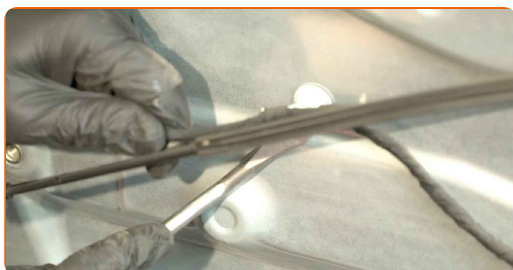
**22** Detach the wiring harness from the protective cover of the door. Use a clip removal tool.



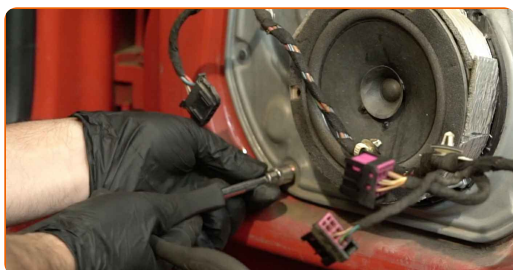
**23** Detach the mirror adjuster connector from the control unit.



**24** Detach the wiring harness from the protective cover of the door. Use a clip removal tool.



**25** Unscrew the fasteners of the protective cover of the door. Use a drive socket #10. Use a ratchet wrench.



**26**

Remove the protective cover of the door.

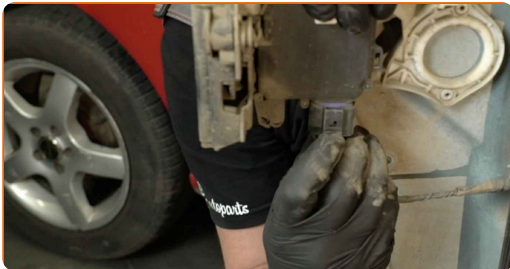


Replacement: door lock – VW Transporter VI Van (SGA, SGH). AUTODOC recommends:

- Do not apply excessive force when removing the part. Otherwise you may damage it.

**27**

Detach the door lock connector. Use a flat screwdriver.



**28**

Remove the door lock. Use a flat screwdriver.



AUTODOC recommends:

- Replacement: door lock – VW Transporter VI Van (SGA, SGH). Do not use excessive force when removing the part as this may damage it.

**29** Remove the handle-to-lock cable. Use a clip removal tool.



**30** Install the handle-to-lock cable.



**31** Install the new lock.



Replacement: door lock – VW Transporter VI Van (SGA, SGH). AUTODOC recommends:

- When installing, do not use excessive force to avoid damage to the part.

**32** Attach the door lock connector.



33

Install the protective cover of the door.



**AUTODOC recommends:**

- Replacement: door lock – VW Transporter VI Van (SGA, SGH). To avoid damaging the part during installation, do not use excessive force.

34

Screw in the fasteners of the protective cover of the door. Use a drive socket #10. Use a ratchet wrench.



35

Tighten the door lock fasteners. Use XZN #8. Use a torque wrench. Tighten it to 20 nm torque.



**36** Install the handle-to-lock cable. Use a flat screwdriver.



Replacement: door lock – VW Transporter VI Van (SGA, SGH). Tip from AUTODOC:

- Check if the door lock is working properly.

**37** Install the cover on the exterior door handle fastener.



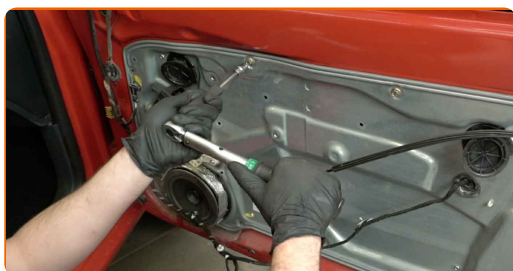
**38** Screw in the exterior door handle fastener. Use Torx T20. Use a ratchet wrench.



**39** Install the cover on the exterior door handle fastener.



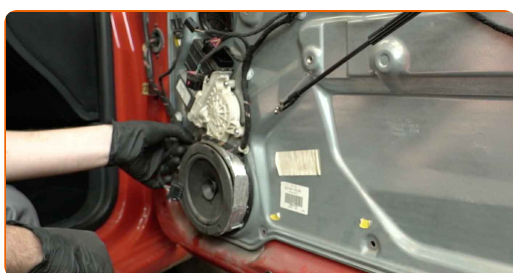
- 40 Tighten the fasteners of the protective cover of the door. Use a drive socket #10. Use a torque wrench. Tighten it to 8 nm torque.



- 41 Attach the wiring harness to the protective cover of the door.



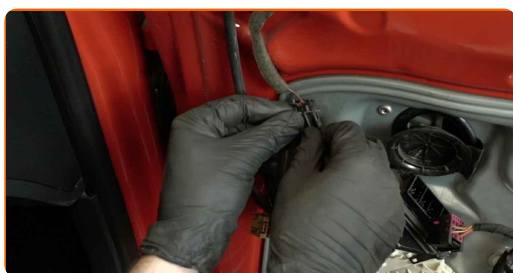
- 42 Attach the speaker connector.



- 43 Attach the wiring harness to the protective cover of the door.



- 44 Attach the mirror adjuster connector to the door.



**45** Attach the wiring harness to the protective cover of the door.



**46** Remove the masking tape.



**47** Lower the window glass and install it to its mounting seat in the window raiser mechanism.



**AUTODOC recommends:**

- To avoid injury, hold the glass when lowering it.

**48** Screw in the window glass fasteners. Use a drive socket #10. Use a ratchet wrench.

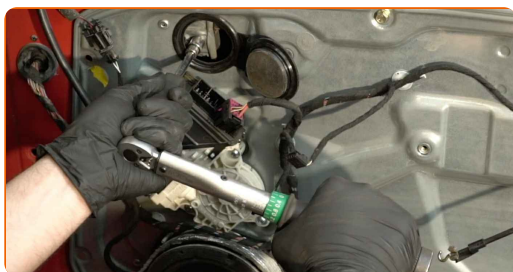




Replacement: door lock – VW Transporter VI Van (SGA, SGH). Tip from AUTODOC experts:

- To avoid injury, hold the glass when screwing in the fasteners.
- Do not apply too much force when tightening the fasteners. Overtightening may damage the glass.

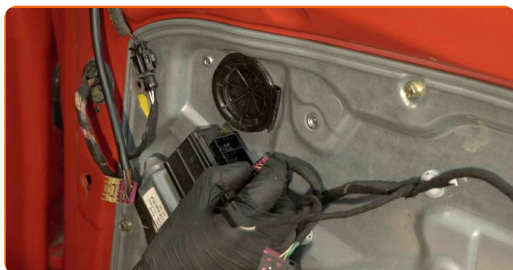
**49** Tighten the window glass fasteners. Use a drive socket #10. Use a torque wrench. Tighten it to 6 nm torque.



**50** Install the covers on the window raiser fasteners.



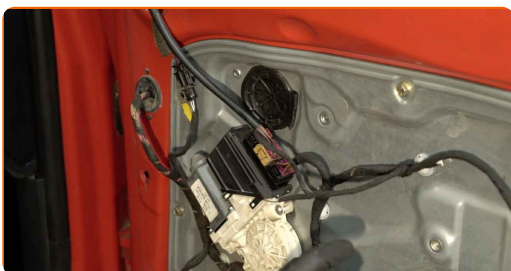
**51** Attach the mirror adjuster connector to the control unit.



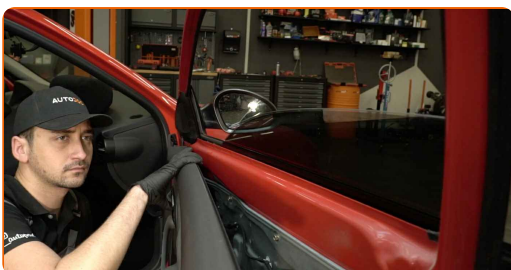
**52** Attach the power window connector to the door card.



**53** Attach the door lock actuator cable.



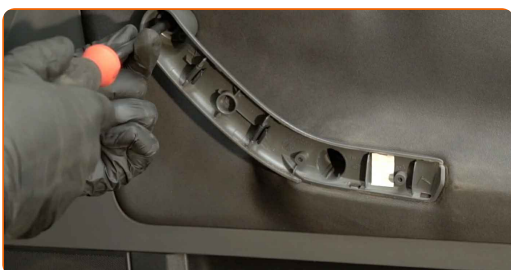
**54** Reinstall the door card.



**AUTODOC recommends:**

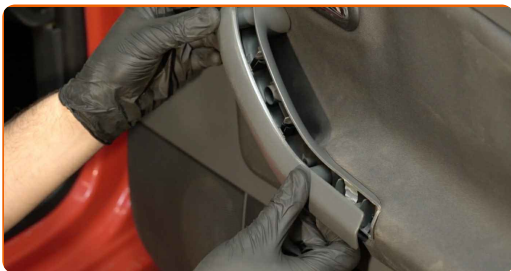
- Replacement: door lock – VW Transporter VI Van (SGA, SGH). Do not use excessive force during installation. This may damage the part.

**55** Screw in the door armrest fasteners. Use a Phillips screwdriver.

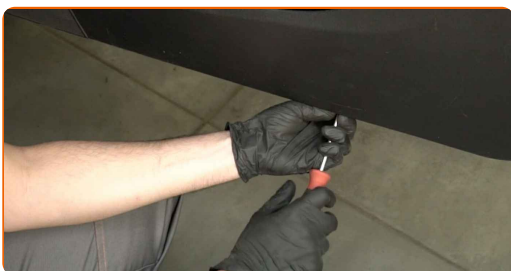


**56**

Reinstall the door armrest panel. Make sure you hear a click indicating that it is locked in place.

**57**

Screw in the door card fasteners. Use a Phillips screwdriver.

**58**

Close the car door.

**WELL DONE!** 

**VIEW MORE TUTORIALS**

# AUTODOC – TOP QUALITY AND AFFORDABLE CAR PARTS ONLINE

**AUTODOC MOBILE APP: GREAT DEALS AND CONVENIENT SHOPPING**



**A GREAT SELECTION OF SPARE PARTS FOR YOUR CAR**

**DOOR LOCK: A WIDE SELECTION**

## **(i) DISCLAIMER:**

The document contains only general recommendations that may be useful for you when you perform repair or replacement work. AUTODOC shall not be liable for any loss, injury, damage of property occurring in the repair or replacement process due to incorrect use or misinterpretation of the provided information.

AUTODOC shall not be liable for any possible mistakes and uncertainties in this guide. The information provided is for information purposes only and cannot replace advice from specialists.

AUTODOC shall not be liable for incorrect or hazardous usage of equipment, tools and car parts. AUTODOC strongly recommends to be careful and observe the safety rules when performing repair or replacement works. Remember: usage of low quality auto parts does not guarantee you the appropriate level of road safety.

© Copyright 2023 – All the contents of this website, in particular texts, photographs and graphics, are protected by copyright. All rights, including reproduction, publication, editing and translation rights, are reserved by AUTODOC SE.