



How to change front
door lock on **VW**

Transporter V Minibus
(7HB, 7HJ, 7EB, 7EJ, 7EF,
7EG, 7HF, 7EC) –
replacement guide

SIMILAR VIDEO TUTORIAL



This video shows the replacement procedure of a similar car part on another vehicle

Important!

This replacement procedure can be used for:

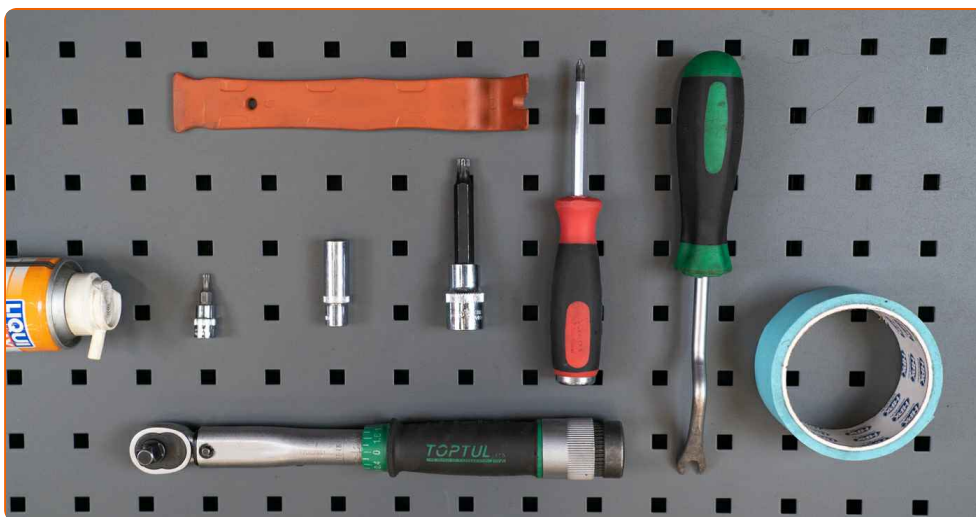
VW Transporter V Minibus (7HB, 7HJ, 7EB, 7EJ, 7EF, 7EG, 7HF, 7EC) 2.0 TDI, VW Transporter V Minibus (7HB, 7HJ, 7EB, 7EJ, 7EF, 7EG, 7HF, 7EC) 2.0 TDI 4motion, VW Transporter V Minibus (7HB, 7HJ, 7EB, 7EJ, 7EF, 7EG, 7HF, 7EC) 1.9 TDI, VW Transporter V Minibus (7HB, 7HJ, 7EB, 7EJ, 7EF, 7EG, 7HF, 7EC) 2.5 TDI, VW Transporter V Minibus (7HB, 7HJ, 7EB, 7EJ, 7EF, 7EG, 7HF, 7EC) 2.0, VW Transporter V Minibus (7HB, 7HJ, 7EB, 7EJ, 7EF, 7EG, 7HF, 7EC) 3.2 V6, VW Transporter V Minibus (7HB, 7HJ, 7EB, 7EJ, 7EF, 7EG, 7HF, 7EC) 2.5 TDI 4motion, VW Transporter V Minibus (7HB, 7HJ, 7EB, 7EJ, 7EF, 7EG, 7HF, 7EC) 3.2 V6 4motion, VW Transporter V Minibus (7HB, 7HJ, 7EB, 7EJ, 7EF, 7EG, 7HF, 7EC) 2.5 TDi, VW Transporter V Minibus (7HB, 7HJ, 7EB, 7EJ, 7EF, 7EG, 7HF, 7EC) 2.0 TSI, VW Transporter V Minibus (7HB, 7HJ, 7EB, 7EJ, 7EF, 7EG, 7HF, 7EC) 2.0 TSI 4motion, VW Transporter V Minibus (7HB, 7HJ, 7EB, 7EJ, 7EF, 7EG, 7HF, 7EC) 2.0 BiTDI, VW Transporter V Minibus (7HB, 7HJ, 7EB, 7EJ, 7EF, 7EG, 7HF, 7EC) 2.0 BiTDI 4motion

The steps may slightly vary depending on the car design.

Please note that this tutorial was created based on the replacement procedure for this car part on a car with a similar design.

This tutorial was created based on the replacement procedure for a similar car part on: SEAT Leon Hatchback (1M1) 1.8 20V

REPLACEMENT: DOOR LOCK – VW TRANSPORTER V
MINIBUS (7HB, 7HJ, 7EB, 7EJ, 7EF, 7EG, 7HF, 7EC).
TOOLS YOU MIGHT NEED:



- Electronic spray
- Torque wrench
- Torx bit T20
- Drive socket # 10
- XZN socket bit # 8
- Ratchet wrench
- Painter's tape
- Phillips screwdriver
- Clip removal tool
- Plastic trim tool

Buy tools

Replacement: door lock – VW Transporter V Minibus (7HB, 7HJ, 7EB, 7EJ, 7EF, 7EG, 7HF, 7EC). Professionals recommend:

- The procedure for replacing the locks on the right and left front doors is identical.
- Please note: all work on the car – VW Transporter V Minibus (7HB, 7HJ, 7EB, 7EJ, 7EF, 7EG, 7HF, 7EC) – should be done with the engine switched off.

CARRY OUT REPLACEMENT IN THE FOLLOWING ORDER:

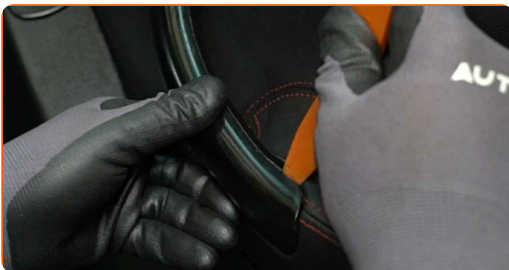
1

Open the car door.



2

Detach the door handle trim panel. Use a plastic trim tool.



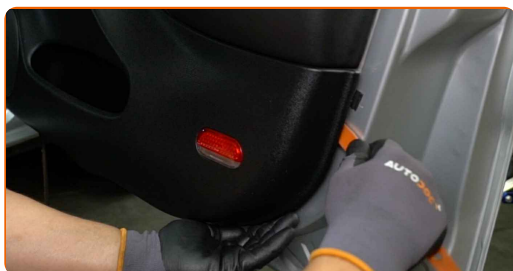
Replacement: door lock – VW Transporter V Minibus (7HB, 7HJ, 7EB, 7EJ, 7EF, 7EG, 7HF, 7EC). AUTODOC recommends:

- Do not apply excessive force when removing the part. Otherwise you may damage it.

3 Unscrew the door card fasteners. Use a Phillips screwdriver.



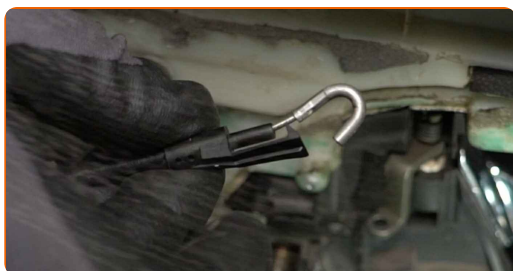
4 Detach the door card. Use a plastic trim tool.



AUTODOC recommends:

- Replacement: door lock – VW Transporter V Minibus (7HB, 7HJ, 7EB, 7EJ, 7EF, 7EG, 7HF, 7EC). Do not use excessive force when removing the part as this may damage it.

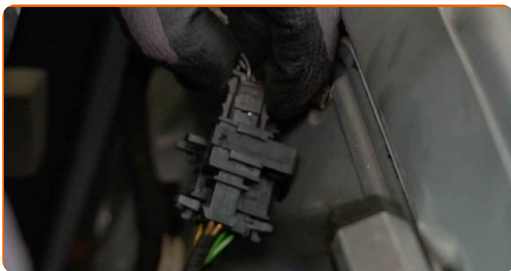
5 Detach the door lock actuator cable.



6 Detach the bulb connector.



7 Detach the speaker connector.

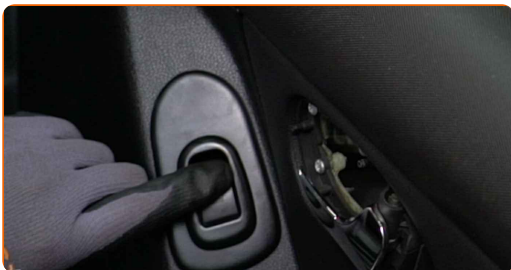


8 Remove the covers from the window raiser fasteners. Use a plastic trim tool.



9 Switch on the ignition.

10 Lower the window glass.



AUTODOC recommends:

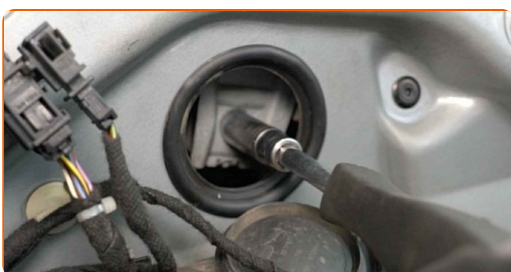
- Continue lowering the window glass until its fasteners become visible.

11 Switch off the ignition.

12 Detach the connector for the power window switch module.



13 Unscrew the window glass fasteners. Use a drive socket #10. Use a ratchet wrench.



Replacement: door lock – VW Transporter V Minibus (7HB, 7HJ, 7EB, 7EJ, 7EF, 7EG, 7HF, 7EC). Tip:

- To avoid injury, hold the glass when unscrewing the fasteners.

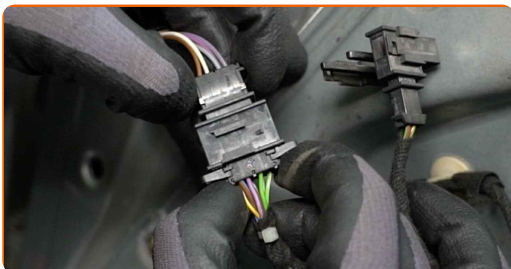
14 Raise the window glass all the way up and secure it on the door frame with masking tape.



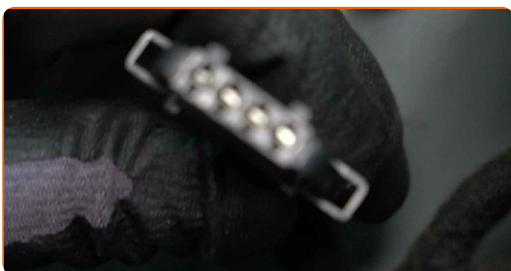
AUTODOC recommends:

- To avoid injury, hold the glass when raising it.

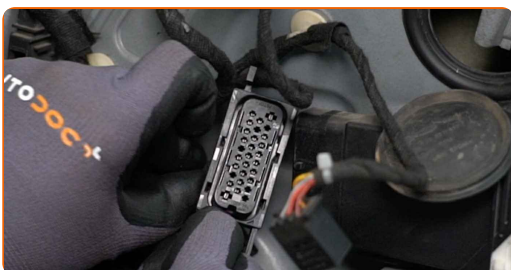
15 Detach the power mirror switch connector.



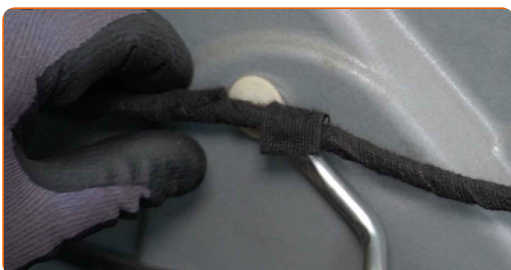
16 Detach the speaker connector.



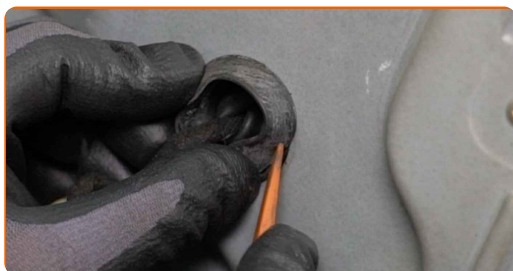
17 Detach the power window connector.



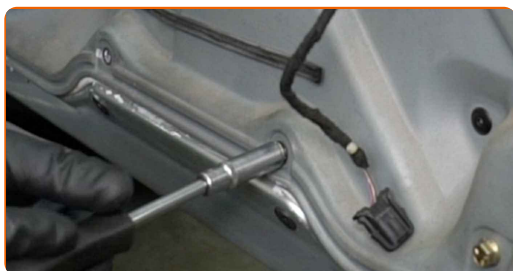
18 Detach the power window wiring harness. Use a clip removal tool.



19 Remove the door panel covers. Use a plastic trim tool.



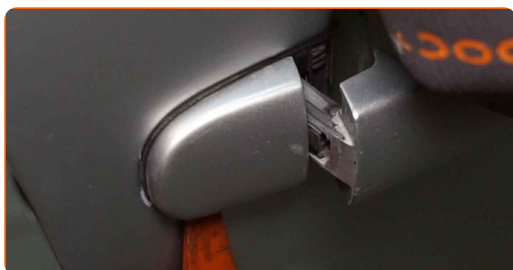
20 Unscrew the door panel fasteners. Use a drive socket #10. Use a ratchet wrench.



21 Unscrew the fastener of the exterior door handle. Use Torx T20. Use a ratchet wrench.



22 Remove the cover from the exterior door handle fastener. Use a plastic trim tool.



Replacement: door lock – VW Transporter V Minibus (7HB, 7HJ, 7EB, 7EJ, 7EF, 7EG, 7HF, 7EC). Tip from AUTODOC experts:

- Do not apply excessive force when removing the part. Otherwise you may damage it.

23

Unscrew the door lock fasteners. Use XZN #8. Use a ratchet wrench.



24

Remove the door panel together with the window regulator linkage.

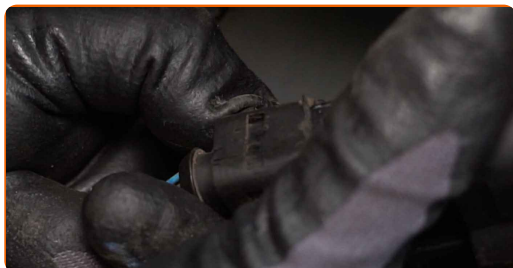


AUTODOC recommends:

- Replacement: door lock – VW Transporter V Minibus (7HB, 7HJ, 7EB, 7EJ, 7EF, 7EG, 7HF, 7EC). To avoid damaging the part when removing it, do not use excessive force.

25

Detach the door lock connector.



26 Remove the handle-to-lock cable. Use a plastic trim tool.



27 Remove the door lock.



AUTODOC recommends:

- Do not apply excessive force when removing the part. Otherwise you may damage it.

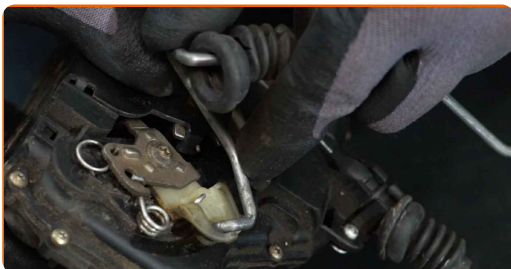
28 Remove the handle-to-lock cable.



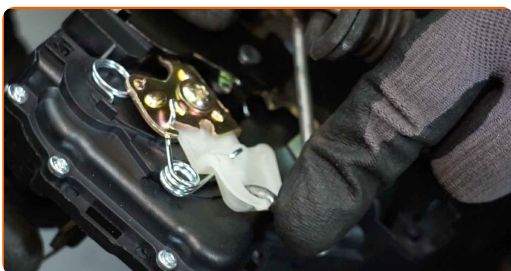
29 Install the handle-to-lock cable.



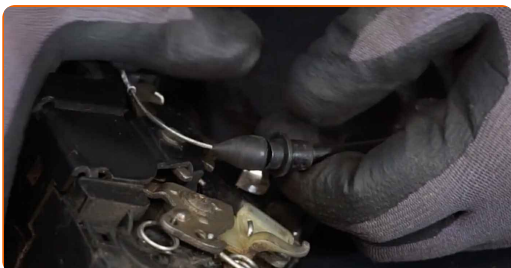
30 Remove the door lock rod.



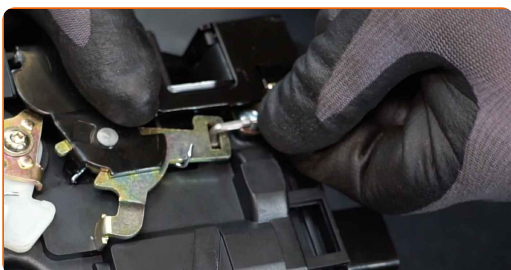
31 Install the door lock rod on the new lock.



32 Remove the handle-to-lock cable.



33 Install the handle-to-lock cable.



34 Install the new lock.

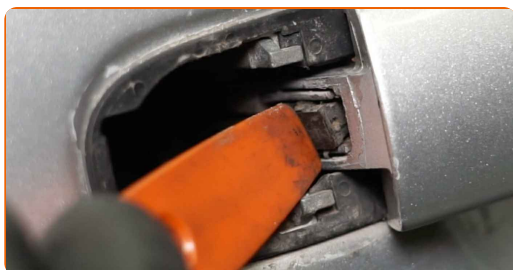


Replacement: door lock – VW Transporter V Minibus (7HB, 7HJ, 7EB, 7EJ, 7EF, 7EG, 7HF, 7EC). AUTODOC experts recommend:

- When installing, do not use excessive force to avoid damage to the part.

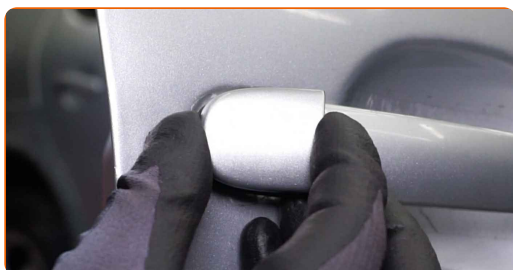
35

Install the handle-to-lock cable. Use a plastic trim tool.



36

Install the cover on the exterior door handle fastener.



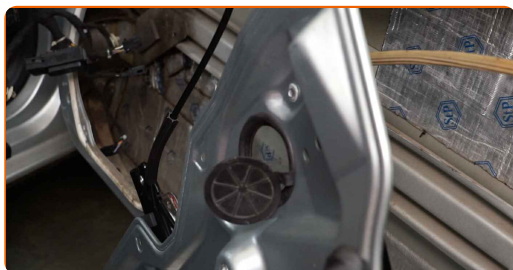
37

Screw in the exterior door handle fastener. Use Torx T20. Use a ratchet wrench.

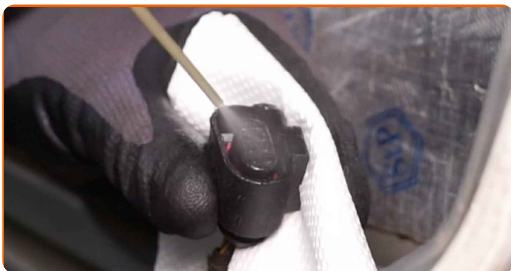


38

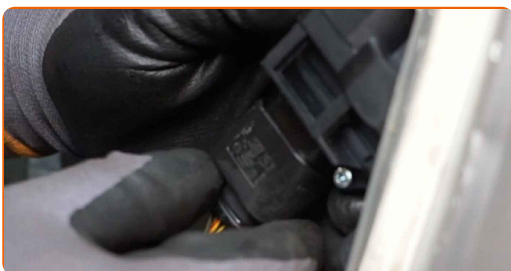
Install the door panel together with the window regulator linkage.



39 Treat the door lock connector. Use dielectric grease.



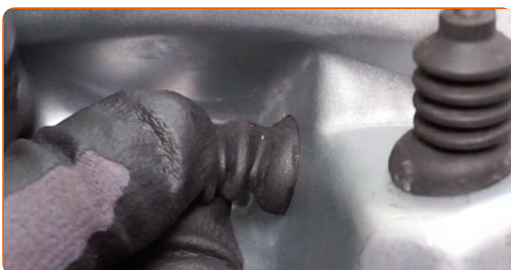
40 Attach the door lock connector.



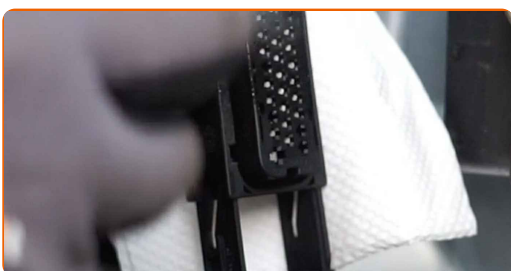
41 Screw in the door panel fasteners. Use a drive socket #10. Use a ratchet wrench.



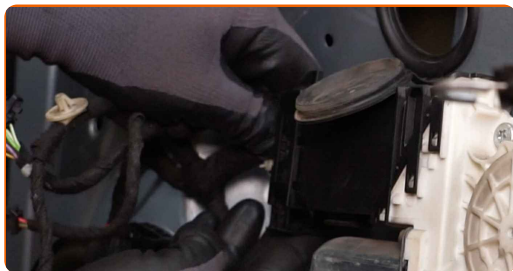
42 Install the door panel covers.



43 Treat the power window module connector. Use dielectric grease.



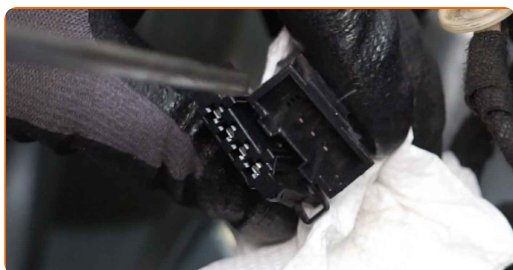
44 Attach the power window connector.



45 Treat the speakers' connectors. Use dielectric grease.

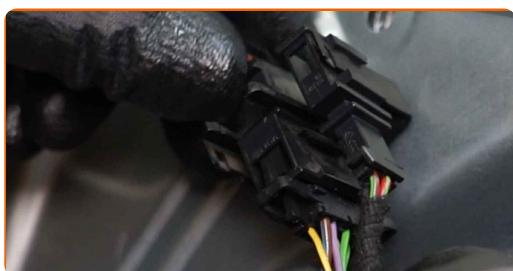


46 Treat the connector of the power mirror switch. Use dielectric grease.

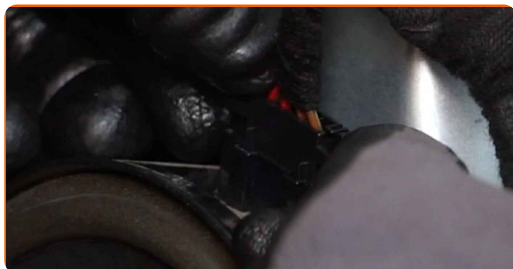


47 Treat the connector for the power window switch module. Use dielectric grease.

48 Attach the mirror adjuster connector to the door.

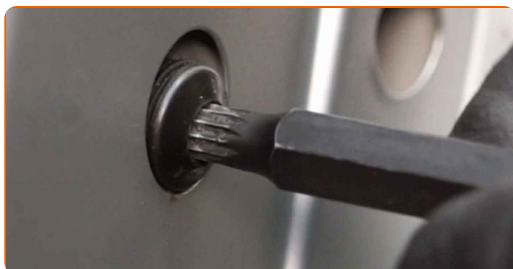


49 Attach the speaker connector.

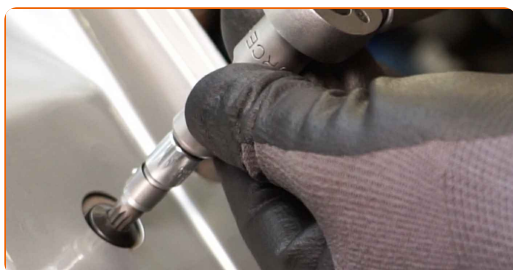


50 Treat the bulb connector. Use dielectric grease.

51 Screw in the door lock's fasteners. Use XZN #8. Use a ratchet wrench.



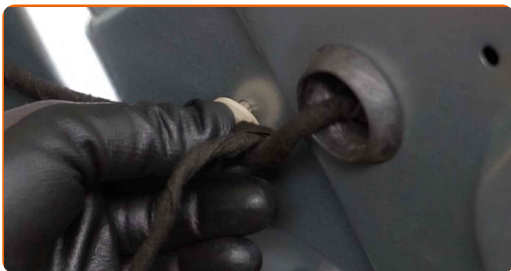
52 Tighten the door lock fasteners. Use XZN #8. Use a torque wrench. Tighten it to 20 Nm torque.



53 Tighten the door panel fasteners. Use a drive socket #10. Use a torque wrench. Tighten it to 8 Nm torque.



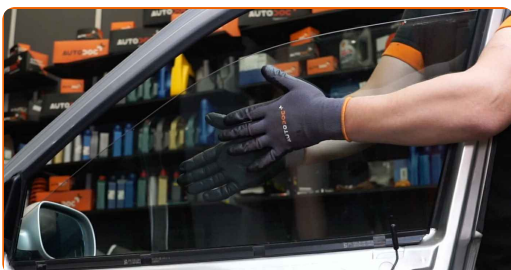
54 Attach the power window wiring harness.



55 Remove the painter's tape.



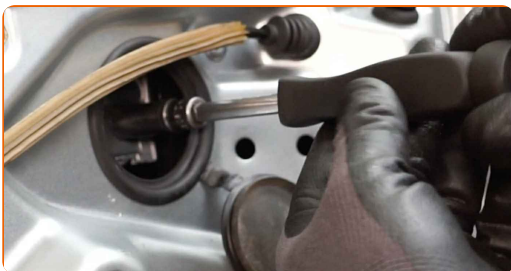
56 Lower the window glass and install it to its mounting seat in the window raiser mechanism.



AUTODOC recommends:

- To avoid injury, hold the glass when lowering it.

57 Screw in the window glass fasteners. Use a drive socket #10. Use a ratchet wrench.

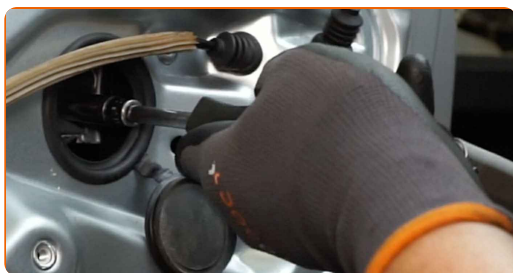


Replacement: door lock – VW Transporter V Minibus (7HB, 7HJ, 7EB, 7EJ, 7EF, 7EG, 7HF, 7EC). Tip from AUTODOC:

- To avoid injury, hold the glass when screwing in the fasteners.

58

Tighten the window glass fasteners. Use a drive socket #10. Use a torque wrench. Tighten it to 6 Nm torque.

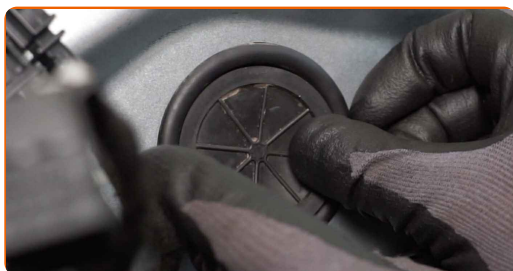


Replacement: door lock – VW Transporter V Minibus (7HB, 7HJ, 7EB, 7EJ, 7EF, 7EG, 7HF, 7EC). Tip:

- Do not apply too much force when tightening the fasteners. Overtightening may damage the glass.

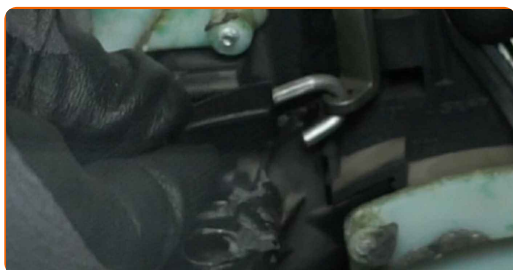
59

Install the covers on the window raiser fasteners.

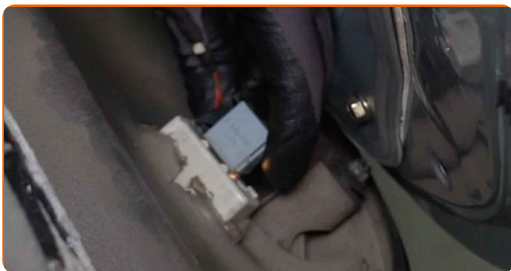


60

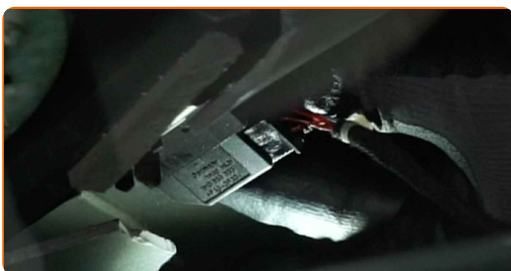
Attach the door lock actuator cable.



61 Attach the bulb connector.



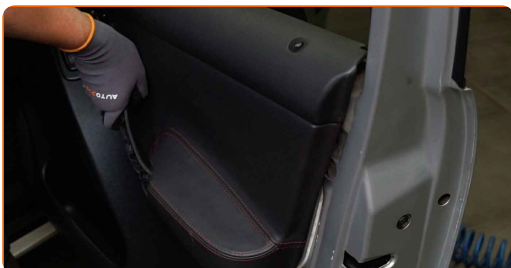
62 Attach the connector for the power window switch module.



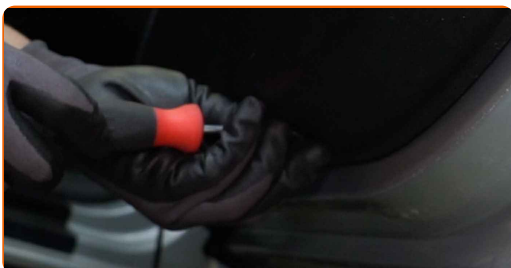
63 Attach the speaker connector.



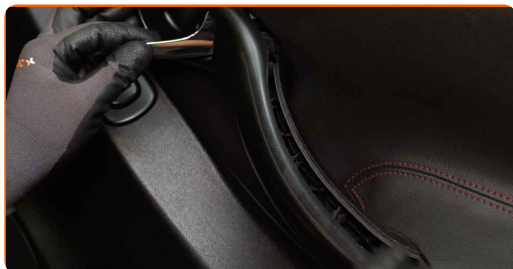
64 Reinstall the door card.



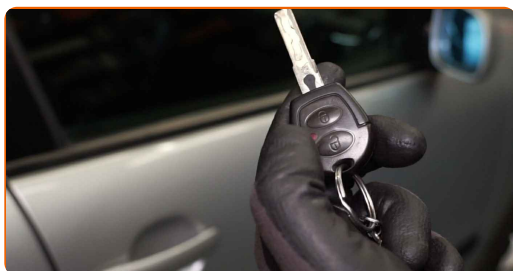
65 Screw in the door card fasteners. Use a Phillips screwdriver.



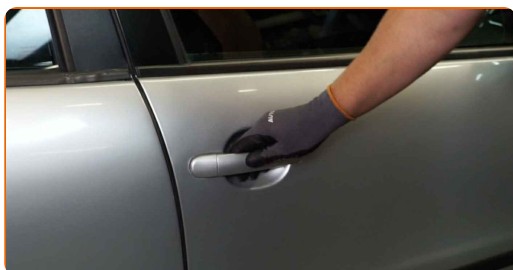
66 Attach the door handle trim panel.



67 Check if the door lock is working properly.



68 Close the car door.



WELL DONE! 

VIEW MORE TUTORIALS

AUTODOC – TOP QUALITY AND AFFORDABLE CAR PARTS ONLINE

AUTODOC MOBILE APP: GREAT DEALS AND CONVENIENT SHOPPING



+ AUTODOC

GET IT ON
 **Google Play**

 **Download on the App Store**

Download

A GREAT SELECTION OF SPARE PARTS FOR YOUR CAR

DOOR LOCK: A WIDE SELECTION

DISCLAIMER:

The document contains only general recommendations that may be useful for you when you perform repair or replacement work. AUTODOC shall not be liable for any loss, injury, damage of property occurring in the repair or replacement process due to incorrect use or misinterpretation of the provided information.

AUTODOC shall not be liable for any possible mistakes and uncertainties in this guide. The information provided is for information purposes only and cannot replace advice from specialists.

AUTODOC shall not be liable for incorrect or hazardous usage of equipment, tools and car parts. AUTODOC strongly recommends to be careful and observe the safety rules when performing repair or replacement works. Remember: usage of low quality auto parts does not guarantee you the appropriate level of road safety.

© Copyright 2023 – All the contents of this website, in particular texts, photographs and graphics, are protected by copyright. All rights, including reproduction, publication, editing and translation rights, are reserved by AUTODOC SE.