



How to change rear
brake caliper on **VW Polo
Saloon (9A4, 9A2, 9N2,
9A6)** – replacement
guide

SIMILAR VIDEO TUTORIAL



This video shows the replacement procedure of a similar car part on another vehicle

Important!

This replacement procedure can be used for:

VW Polo Saloon (9A4, 9A2, 9N2, 9A6) 1.4, VW Polo Saloon (9A4, 9A2, 9N2, 9A6) 1.9 SDI, VW Polo Saloon (9A4, 9A2, 9N2, 9A6) 1.4 TDI, VW Polo Saloon (9A4, 9A2, 9N2, 9A6) 1.6

The steps may slightly vary depending on the car design.

This tutorial was created based on the replacement procedure for a similar car part on: VW Golf IV Hatchback (1J1) 1.6

REPLACEMENT: BRAKE CALIPER – VW POLO SALOON (9A4, 9A2, 9N2, 9A6). LIST OF THE TOOLS YOU'LL NEED:



- Wire brush
- Brake cleaner
- Copper grease
- Combination spanner #11
- Combination spanner #15
- HEX bit No.H6.
- Drive socket # 11
- Drive socket # 13
- Wheel impact socket #17
- Ratchet wrench
- Torque wrench
- Fluid container
- Water pump pliers
- Brake hose clip
- Brake bleeder kit
- Crow bar
- Wheel chock

Buy tools

Replacement: brake caliper – VW Polo Saloon (9A4, 9A2, 9N2, 9A6). Tip from AUTODOC experts:

- The replacement procedure is identical for the left and right brake calipers on the same axle.
- All work should be done with the engine stopped.

REPLACEMENT: BRAKE CALIPER – VW POLO SALOON (9A4, 9A2, 9N2, 9A6). USE THE FOLLOWING PROCEDURE:

1 Open the bonnet. Unscrew the brake fluid reservoir cap.

2 Secure the wheels with chocks.

3 Loosen the wheel mounting bolts. Use wheel impact socket #17.



4 Raise the rear of the car and secure on supports.

5 Unscrew the wheel bolts.



AUTODOC recommends:

- Warning! To avoid injury, hold the wheel while unscrewing the fastening bolts. VW Polo Saloon (9A4, 9A2, 9N2, 9A6)

6

Remove the wheel.



7

Clean the area where the brake hose is connected to the caliper, and the guide pins area. Use a wire brush. Use a brake cleaner.

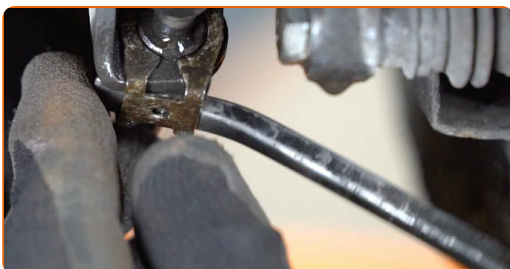


AUTODOC recommends:

- Replacement: brake caliper – VW Polo Saloon (9A4, 9A2, 9N2, 9A6). After applying the spray, wait a few minutes.

8

Remove the retaining clip of the parking brake cable. Use a crowbar.



9 Disconnect the parking brake cable from the caliper. Use water pump pliers. Release the parking brake cable.



10 Clamp the brake hose off using a brake hose clamp.



11 Put a container for gathering brake fluid beneath.



12 Unscrew the brake hose from the brake caliper. Use a drive socket #13. Use a ratchet wrench.



13 Spread the brake pads. Use a crowbar.



14

Unscrew the brake caliper fastening. Use a combination spanner #15. Use a drive socket #13. Use a ratchet wrench.



15

Remove the brake caliper. Use a crowbar.



Replacement: brake caliper – VW Polo Saloon (9A4, 9A2, 9N2, 9A6). Tip from AUTODOC experts:

- When replacing the brake caliper, it is recommended to check the brake hose for damages and, if necessary, to replace it with a new one.
- When replacing a brake caliper it is recommended to replace brake pads, check the state of the brake discs and replace them with new ones if necessary.
- If no new guide pins were supplied in a kit with the new brake calipers, use the old pins.

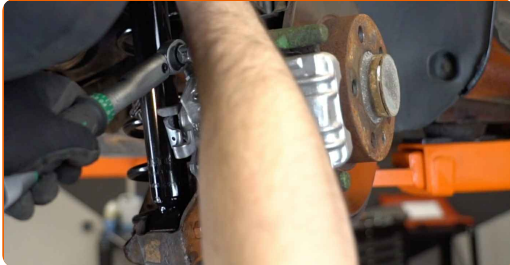
16 Install the brake caliper and fix it.



Please note!

- Install the brake caliper starting with its lower part.
- Hold up the brake caliper.

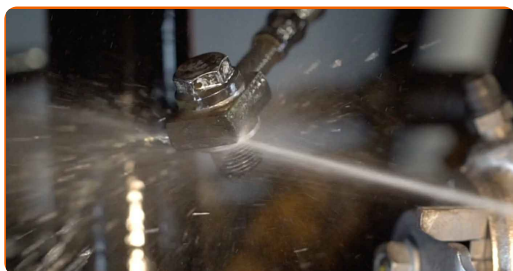
17 Tighten the brake caliper fasteners. Use a combination spanner #15. Use a drive socket #13. Use a torque wrench. Tighten it to 35 Nm torque.



18 Unscrew the brake hose plug. Use HEX No.H6. Use a ratchet wrench.



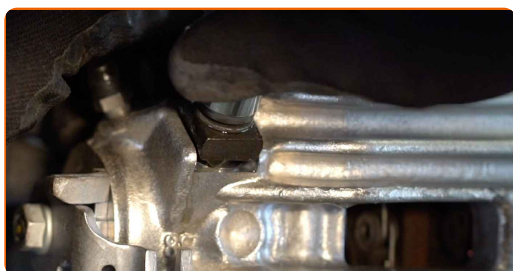
19 Treat the brake hose. Use a brake cleaner.



AUTODOC recommends:

- Replacement: brake caliper – VW Polo Saloon (9A4, 9A2, 9N2, 9A6). After applying the spray, wait a few minutes.

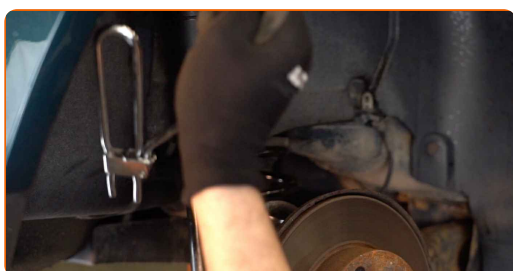
20 Install and fix the brake hose into a new caliper. Use a drive socket #13.



21 Tighten the fastener connecting the brake pipe to the brake caliper. Use a drive socket #13. Use a torque wrench. Tighten it to 35 Nm torque.



22 Remove the brake hose clamp.



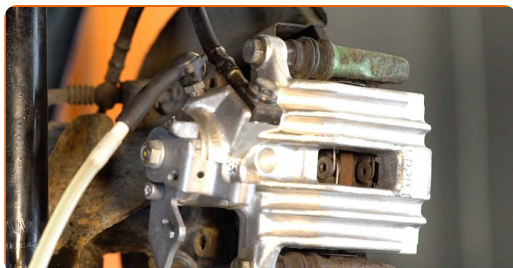
23 Detach the brake caliper bleed screw cap.



24 Undo the brake bleeder screw. Use a combination spanner #11.



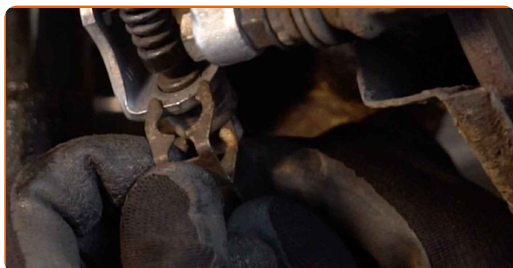
25 Connect the brake bleeder kit to the brake bleeder screw.



26 Install the parking brake cable into the brake caliper bracket. Use water pump pliers.



27 Secure the parking brake cable with the retaining clip.



- 28 Bleed the brake caliper system. Without starting the engine, press the brake pedal several times until you feel significant resistance.



- 29 Tighten the brake bleeder screw. Use a combination spanner #11.



- 30 Disconnect the brake bleeder kit.



- 31 Tighten the brake caliper bleed screw. Use a drive socket #11. Use a torque wrench. Tighten it to 10 Nm torque.



- 32 Attach the brake caliper bleed screw cap.



33

Treat the surface where the brake disc contacts the wheel rim. Use copper grease.



34

Clean the brake disk surface. Use a brake cleaner.



AUTODOC recommends:

- Replacement: brake caliper – VW Polo Saloon (9A4, 9A2, 9N2, 9A6). After applying the spray, wait a few minutes.

35

Install the wheel.



AUTODOC recommends:

- Warning! To avoid injury, hold the wheel while screwing in the fastening bolts on the car. VW Polo Saloon (9A4, 9A2, 9N2, 9A6)

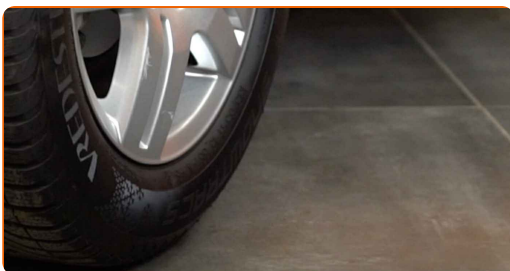
36 Screw in the wheel bolts. Use wheel impact socket #17.



37 Lower the car and working in a cross order, tighten the wheel bolts. Use a torque wrench. Tighten it to 120 Nm torque.



38 Remove the jacks and chocks.

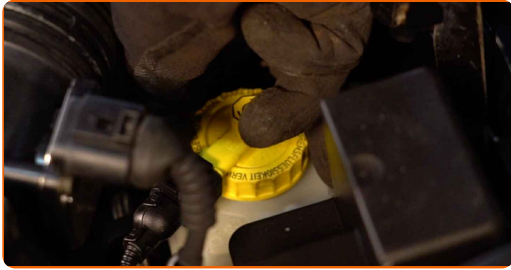


AUTODOC recommends:

- Check the brake fluid level in the expansion tank and refill if necessary.

39

Tighten the brake fluid reservoir cap. Close the hood.



WELL DONE! 

VIEW MORE TUTORIALS

AUTODOC – TOP QUALITY AND AFFORDABLE CAR PARTS ONLINE

AUTODOC MOBILE APP: GREAT DEALS AND CONVENIENT SHOPPING



+ AUTODOC

GET IT ON
Google Play

 Download on the
App Store

Download

A GREAT SELECTION OF SPARE PARTS FOR YOUR CAR

BRAKE CALIPER: A WIDE SELECTION

DISCLAIMER:

The document contains only general recommendations that may be useful for you when you perform repair or replacement work. AUTODOC shall not be liable for any loss, injury, damage of property occurring in the repair or replacement process due to incorrect use or misinterpretation of the provided information.

AUTODOC shall not be liable for any possible mistakes and uncertainties in this guide. The information provided is for information purposes only and cannot replace advice from specialists.

AUTODOC shall not be liable for incorrect or hazardous usage of equipment, tools and car parts. AUTODOC strongly recommends to be careful and observe the safety rules when performing repair or replacement works. Remember: usage of low quality auto parts does not guarantee you the appropriate level of road safety.

© Copyright 2023 – All the contents of this website, in particular texts, photographs and graphics, are protected by copyright. All rights, including reproduction, publication, editing and translation rights, are reserved by AUTODOC SE.