



How to change track rod  
end on **VW POLO PLAYA**  
– replacement guide

## SIMILAR VIDEO TUTORIAL



This video shows the replacement procedure of a similar car part on another vehicle

### Important!

This replacement procedure can be used for:

VW POLO PLAYA 1.0

The steps may slightly vary depending on the car design.

This tutorial was created based on the replacement procedure for a similar car part on: VW Lupo (6X1, 6E1) 1.0

**REPLACEMENT: TRACK ROD END – VW POLO PLAYA.  
LIST OF THE TOOLS YOU'LL NEED:**



- Wire brush
- WD-40 spray
- All-purpose cleaning spray
- Copper grease
- Torque wrench
- Combination spanner #19
- Combination spanner #22
- Drive socket # 19
- Wheel impact socket #17
- Ratchet wrench
- Ball joint puller
- Vernier caliper
- Wheel chock

**Buy tools**

**Replacement: track rod end – VW POLO PLAYA. Tip from AUTODOC:**

- Replace tie rod ends in pairs.
- The replacement procedure is identical for the right and left tie rod ends.
- Please note: all work on the car – VW POLO PLAYA – should be done with the engine switched off.

**CARRY OUT REPLACEMENT IN THE FOLLOWING ORDER:**

**1** Secure the wheels with chocks.

**2** Loosen the wheel mounting bolts. Use wheel impact socket #17.



**3** Raise the car.

**Replacement: track rod end – VW POLO PLAYA. Tip:**

- If you are using a jack, make sure it rests on a flat surface without any unevenness.
- Be sure to additionally secure the car with jack stands.

**4** Unscrew the wheel bolts.



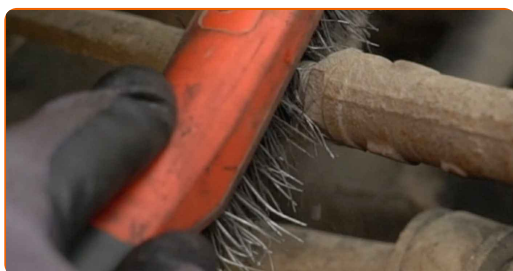
**AUTODOC recommends:**

- Warning! To avoid injury, hold the wheel while unscrewing the fastening bolts. VW POLO PLAYA

**5** Remove the wheel.



**6** Clean all tie rod end connections. Use a wire brush. Use WD-40 spray.



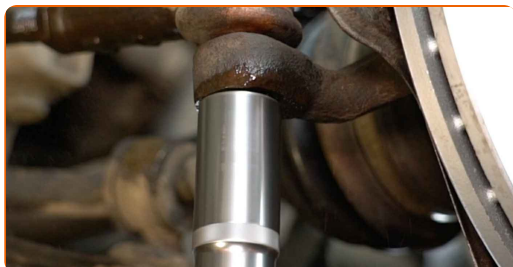
- 7 When deinstalling, mark or measure the precise position of the ball joint on the track rod, or count the number of turns in order to prevent misalignment afterward. Use a vernier caliper.



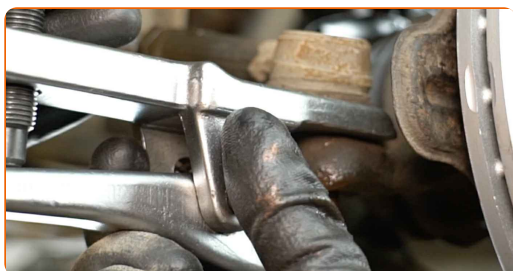
- 8 Loosen the lock nut securing the tie rod end to the tie rod. Use a combination spanner #19. Use a combination spanner #22.



- 9 Unscrew the end fastening nut to the steering knuckle. Use a drive socket #19. Use a ratchet wrench.



- 10 Disconnect the tie rod end from the steering knuckle. Use a ball joint puller.



**11** Screw the end out of the tie rod.



**12** Clean the mounting seats of the tie rod end. Use a wire brush. Use all-purpose cleaning spray.



**13** Treat the mounting seats of the tie rod end. Use copper grease.



**14** Screw on a new tie rod end. Use a vernier caliper.



Replacement: track rod end – VW POLO PLAYA. AUTODOC experts recommend:

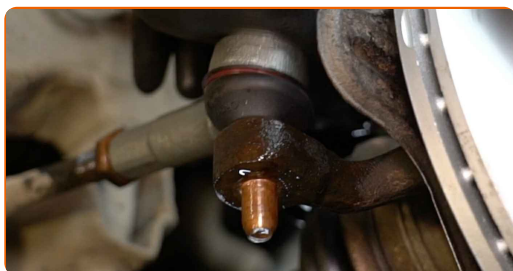
- While installing the steering rod end remember to make the same number of turns or to leave the same length of thread showing as per your measurements.



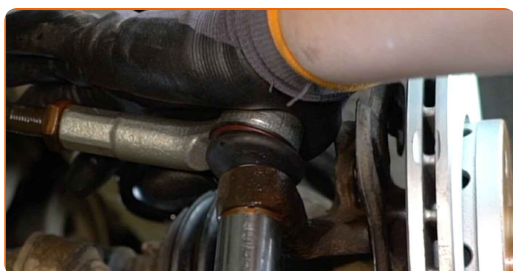
**15** Treat the fastener connecting the tie rod end to the steering knuckle. Use copper grease.



**16** Connect the tie rod end to the steering knuckle.

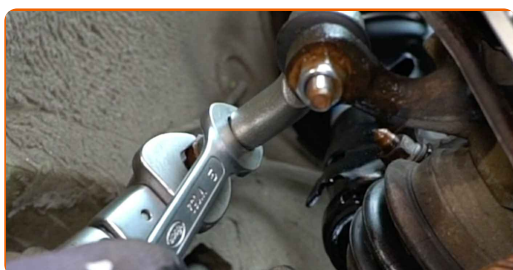


**17** Screw on the fastening nut that connects the tie rod end to the steering knuckle. Use a drive socket #19. Use a ratchet wrench.



**18** Screw on the tie rod end jam nut. Use a combination spanner #19. Use a combination spanner #22.

**19** Tighten the tie rod end locknut. Use a combination spanner #19. Use a combination spanner #22. Use a torque wrench. Tighten it to 50 nm torque.





- 20** Tighten the fastening nut connecting the tie rod end to the steering knuckle. Use a drive socket #19. Use a torque wrench. Tighten it to 35 nm torque.



- 21** Treat all tie rod end connections. Use copper grease.



- 22** Install the wheel.



**AUTODOC recommends:**

- Warning! To avoid injury, hold the wheel while screwing in the fastening bolts on the car. VW POLO PLAYA

- 23** Screw in the wheel bolts. Use wheel impact socket #17.



- 24** Lower the car and working in a cross order, tighten the wheel bolts. Use wheel impact socket #17. Use a torque wrench. Tighten it to 110 Nm torque.



- 25** Remove the jacks and chocks.



Replacement: track rod end – VW POLO PLAYA. Tip from AUTODOC:

- After replacing the component, it is advisable to realign the wheels using a wheel aligner.

**WELL DONE!** 

**VIEW MORE TUTORIALS**

# AUTODOC – TOP QUALITY AND AFFORDABLE CAR PARTS ONLINE

**AUTODOC MOBILE APP: GREAT DEALS AND CONVENIENT SHOPPING**



**A GREAT SELECTION OF SPARE PARTS FOR YOUR CAR**

**TRACK ROD END: A WIDE SELECTION**

## **(i) DISCLAIMER:**

The document contains only general recommendations that may be useful for you when you perform repair or replacement work. AUTODOC shall not be liable for any loss, injury, damage of property occurring in the repair or replacement process due to incorrect use or misinterpretation of the provided information.

AUTODOC shall not be liable for any possible mistakes and uncertainties in this guide. The information provided is for information purposes only and cannot replace advice from specialists.

AUTODOC shall not be liable for incorrect or hazardous usage of equipment, tools and car parts. AUTODOC strongly recommends to be careful and observe the safety rules when performing repair or replacement works. Remember: usage of low quality auto parts does not guarantee you the appropriate level of road safety.

© Copyright 2022 – All the contents of this website, in particular texts, photographs and graphics, are protected by copyright. All rights, including reproduction, publication, editing and translation rights, are reserved by AUTODOC GmbH.