



How to change rear  
brake discs on **VW POLO**  
**(AW1, BZ1)** – replacement  
guide

## SIMILAR VIDEO TUTORIAL



This video shows the replacement procedure of a similar car part on another vehicle

### Important!

This replacement procedure can be used for:  
VW POLO (AW1, BZ1) 1.0 TSI, VW POLO (AW1, BZ1) 1.5 TSI

The steps may slightly vary depending on the car design.

This tutorial was created based on the replacement procedure for a similar car part on: SEAT Leon Hatchback (1M1) 1.8 20V

**REPLACEMENT: BRAKE DISCS – VW POLO (AW1, BZ1).  
TOOLS YOU'LL NEED:**



- Wire brush
- Nylon cleaning brush
- WD-40 spray
- Brake cleaner
- Anti-squeal paste
- Ceramic grease
- Torque wrench
- Drive socket # 13
- Combination spanner #13
- Combination spanner #15
- HEX bit No.H8
- Wheel impact socket #17
- Ratchet wrench
- Brake caliper wind back tool
- Crow bar
- Tap wrench
- Impact screwdriver
- Hammer
- Phillips screwdriver
- Wheel chock

**Buy tools**

**Replacement: brake discs – VW POLO (AW1, BZ1). AUTODOC recommends:**

- Replace the brake disks on the car VW POLO (AW1, BZ1) in complete set for each axis. Regardless of the state of components. This will ensure even braking.
- The replacement procedure is identical for both brake disks on the same axle.
- When changing the brake discs, always replace the brake pads.
- All work should be done with the engine stopped.

**CARRY OUT REPLACEMENT IN THE FOLLOWING ORDER:**

**1** Open the bonnet.

**2** Unscrew the brake fluid reservoir cap.

**3** Secure the wheels with chocks.

**4** Loosen the wheel bolts. Use wheel impact socket #17. Use a tap wrench.



**5** Raise the car.

Replacement: brake discs – VW POLO (AW1, BZ1). Tip:

- If you are using a jack, make sure it rests on a flat surface without any unevenness.
- Be sure to additionally secure the car with jack stands.

6

Unscrew the wheel bolts.



AUTODOC recommends:

- Important! Hold the wheel while unscrewing the fastening bolts. VW POLO (AW1, BZ1)

7

Remove the wheel.



8

Clean the brake caliper fasteners. Use a wire brush. Use WD-40 spray.



9

Unscrew the brake caliper fasteners. Use a combination spanner #13. Use a combination spanner #15.



10

Remove the fastening bolts.



11

Remove the brake caliper. Use a crowbar.



**AUTODOC recommends:**

- Tie the caliper to the suspension or to the body with a wire without disconnecting from the brake hose to prevent depressurization of the brake system.
- Make sure that the brake caliper is not hanging on the brake hose.
- Don't press the brake pedal after the brake caliper has been removed. As a result, the piston can fall out from the brake cylinder, and brake fluid leakage and depressurization of the system may occur.

**12**

Remove the brake pads.



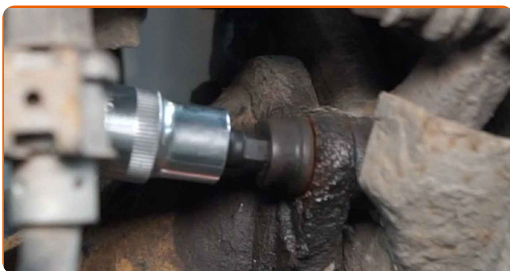
**13**

Clean the brake caliper bracket fasteners. Use a wire brush. Use WD-40 spray.

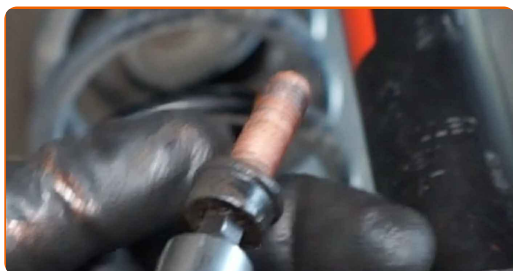


**14**

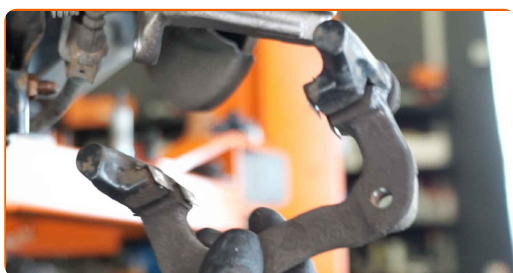
Unscrew the brake caliper bracket fasteners. Use HEX No.H8. Use a ratchet wrench.



**15** Remove the fastening bolts.



**16** Remove the brake caliper bracket.



**17** Clean the brake disc fastener. Use a wire brush. Use WD-40 spray.



**18** Unscrew the brake disc fasteners. Use an impact screwdriver. Use a hammer.



**19** Remove the fastening bolt.





**20** Remove the brake disc.



**21** Clean the wheel hub. Use a wire brush.



**22** Treat the contacting surface. Use ceramic grease.



**23** Install a new brake disc.



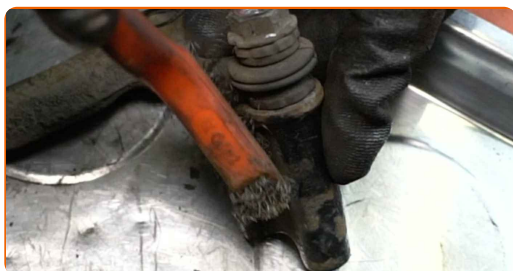
**24** Install the fastening bolt.



**25** Tighten the brake disc fasteners. Use a Phillips screwdriver. Use a torque wrench. Tighten it to 4 Nm torque.



**26** Clean the brake caliper bracket of dirt and dust. Use a wire brush. Use a brake cleaner.



Replacement: brake discs – VW POLO (AW1, BZ1). AUTODOC experts recommend:

- Check the brake caliper bracket, brake caliper guide pins and boots. Clean them. Replace, if necessary.

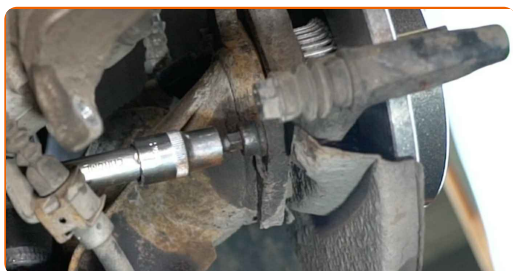
**27** Install the brake caliper bracket.



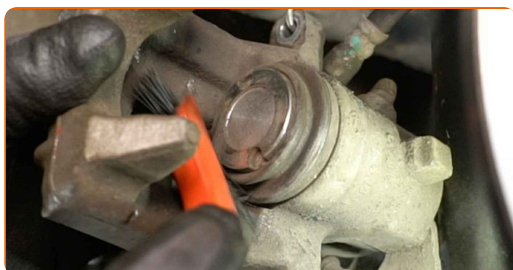
**28** Install the fastening bolts.



**29** Tighten the brake caliper bracket fasteners. Use HEX No.H8. Use a torque wrench. Tighten it to 65 Nm torque.



**30** Treat the brake caliper piston. Use a nylon cleaning brush. Use a brake cleaner.



**31** Press in the brake caliper piston. Use brake caliper wind back tool.



- 32** Treat the brake pads in the area where their surface comes into contact with the brake caliper bracket. Use anti-squeal paste.



- 33** Install the brake pads.



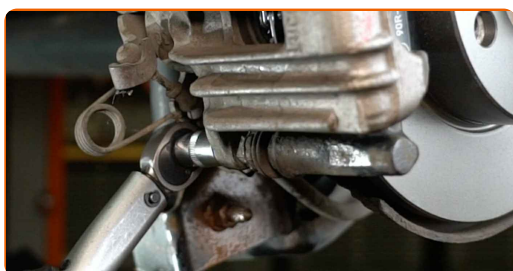
- 34** Install the brake caliper.



- 35** Install the fastening bolts.



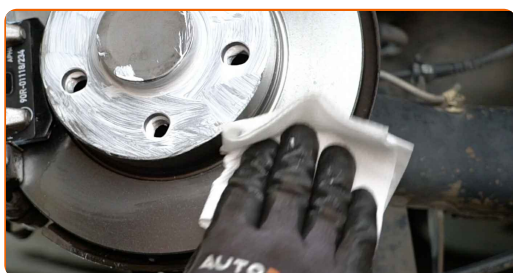
- 36** Tighten the brake caliper fasteners. Use a drive socket #13. Use a torque wrench. Tighten it to 35 Nm torque.



**37** Treat the surface where the brake disc contacts the wheel rim. Use ceramic grease.



**38** Clean the brake disk surface. Use a brake cleaner.



**39** Install the wheel.



**AUTODOC recommends:**

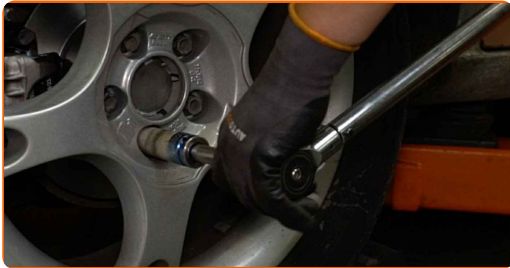
- To avoid injury, hold up the wheel when screwing in the fastening bolts.

**40** Screw in the wheel bolts. Use wheel impact socket #17. Use a ratchet wrench.



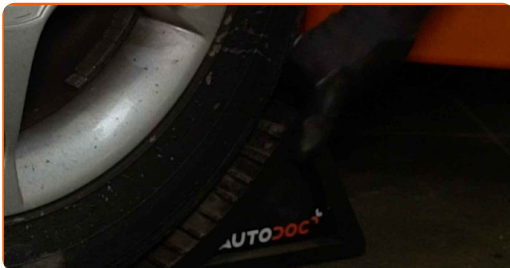
**41**

Lower the car and working in a cross order, tighten the wheel bolts. Use wheel impact socket #17. Use a torque wrench. Tighten it to 120 Nm torque.



**42**

Remove the jacks and chocks.



**AUTODOC recommends:**

- Without starting the engine, press the brake pedal several times until you feel significant resistance.
- Important! Replacement: brake discs – VW POLO (AW1, BZ1). Check the brake fluid level in the reservoir and top up if necessary.

**43**

Tighten the brake fluid reservoir cap.

**44**

Close the bonnet.

**WELL DONE!** 

**VIEW MORE TUTORIALS**

# AUTODOC – TOP QUALITY AND AFFORDABLE CAR PARTS ONLINE

**AUTODOC MOBILE APP: GREAT DEALS AND CONVENIENT SHOPPING**



**A GREAT SELECTION OF SPARE PARTS FOR YOUR CAR**

**BRAKE DISCS: A WIDE SELECTION**

## **DISCLAIMER:**

The document contains only general recommendations that may be useful for you when you perform repair or replacement work. AUTODOC shall not be liable for any loss, injury, damage of property occurring in the repair or replacement process due to incorrect use or misinterpretation of the provided information.

AUTODOC shall not be liable for any possible mistakes and uncertainties in this guide. The information provided is for information purposes only and cannot replace advice from specialists.

AUTODOC shall not be liable for incorrect or hazardous usage of equipment, tools and car parts. AUTODOC strongly recommends to be careful and observe the safety rules when performing repair or replacement works. Remember: usage of low quality auto parts does not guarantee you the appropriate level of road safety.

© Copyright 2023 – All the contents of this website, in particular texts, photographs and graphics, are protected by copyright. All rights, including reproduction, publication, editing and translation rights, are reserved by AUTODOC SE.