



How to change rear
suspension lower control
arm on **VW PASSAT**
Variant (3B5) –
replacement guide

SIMILAR VIDEO TUTORIAL



This video shows the replacement procedure of a similar car part on another vehicle

i Important!

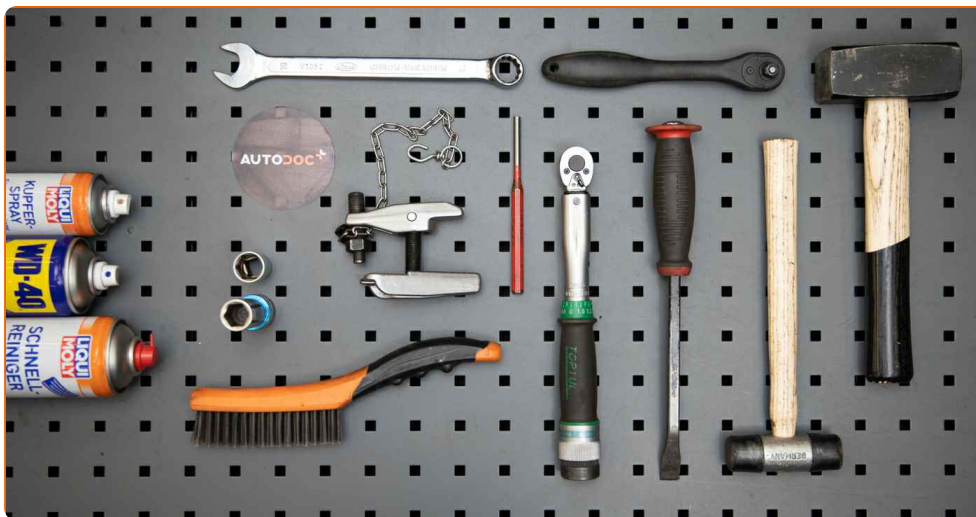
This replacement procedure can be used for:

VW PASSAT Variant (3B5) 1.6, VW PASSAT Variant (3B5) 1.8, VW PASSAT Variant (3B5) 1.8 T, VW PASSAT Variant (3B5) 2.3 VR5, VW PASSAT Variant (3B5) 2.8 V6, VW PASSAT Variant (3B5) 1.9 TDI, VW PASSAT Variant (3B5) 2.3 VR5 Syncro/4motion, VW PASSAT Variant (3B5) 2.5 TDI, VW PASSAT Variant (3B5) 2.0, VW PASSAT Variant (3B5) 2.8 V6 4motion

The steps may slightly vary depending on the car design.

This tutorial was created based on the replacement procedure for a similar car part on: AUDI A4 Avant (8D5, B5) 1.8 T

REPLACEMENT: REAR SUSPENSION LOWER CONTROL ARM – VW PASSAT VARIANT (3B5). LIST OF THE TOOLS YOU'LL NEED:



- Wire brush
- WD-40 spray
- Brake cleaner
- Copper grease
- Combination spanner #19
- Drive socket # 19
- Wheel impact socket #17
- Ratchet wrench
- Torque wrench
- Hammer
- Pin punch
- Rubber mallet
- Ball joint puller
- Crow bar
- Hydraulic transmission jack
- Wheel chock

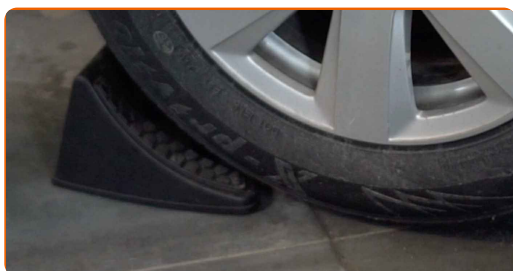
Buy tools

Replacement: rear suspension lower control arm – VW PASSAT Variant (3B5).
Professionals recommend:

- The replacement procedure is identical for the left and right lower control arms.
- All work should be done with the engine stopped.

REPLACEMENT: REAR SUSPENSION LOWER CONTROL ARM – VW PASSAT VARIANT (3B5). USE THE FOLLOWING PROCEDURE:

1 Secure the wheels with chocks.



2 Loosen the wheel mounting bolts. Use wheel impact socket #17.



3 Raise the rear of the car and secure on supports.

4

Unscrew the wheel bolts.



Replacement: rear suspension lower control arm – VW PASSAT Variant (3B5).
AUTODOC recommends:

- To avoid injury, hold up the wheel when unscrewing the bolts.

5

Remove the wheel.



6

Clean the fastener connecting the rear knuckle to the suspension control arm. Use a wire brush. Use WD-40 spray.

7

Unscrew the fastener connecting the control arm to the rear knuckle. Use a combination spanner #19.



8

Clean the fasteners connecting the control arm to the subframe. Use a wire brush. Use WD-40 spray.

- 9 Unscrew the arm fastening from the subframe. Use a combination spanner #19. Use a drive socket #19. Use a ratchet wrench.



- 10 Remove the fastening bolt. Use a crowbar.

- 11 Detach the lower control arm. Use a ball joint puller.



- 12 Remove the arm. Use a crowbar. Use a rubber mallet.



- 13 Clean the mounting seats and the thread of the suspension arm. Use a wire brush. Use WD-40 spray.

- 14 Install a new arm. Use a rubber mallet.



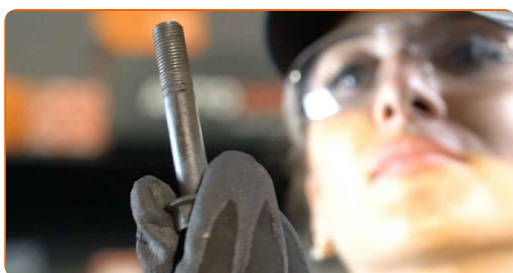
Replacement: rear suspension lower control arm – VW PASSAT Variant (3B5).

Tip:

- During the installation process, use only new bolts and nuts.
- Do not damage the ball joint cover.

15

Install the fastening bolt. Use a pin punch. Use a hammer.

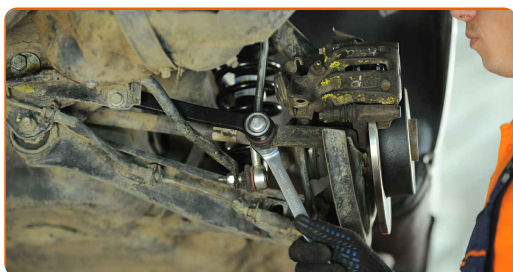


16

Attach the lower control arm.

17

Tighten the fastener connecting the control arm to the rear knuckle. Use a crowbar. Use a combination spanner #19. Use a torque wrench. Tighten it to 85 Nm torque.

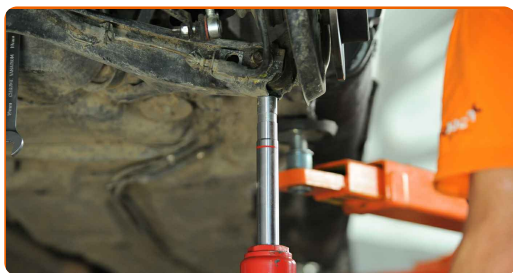


18

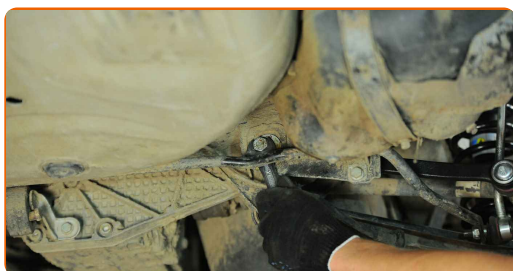
Screw the fastener connecting the control arm to the subframe. Use a combination spanner #19. Use a drive socket #19. Use a ratchet wrench.

19

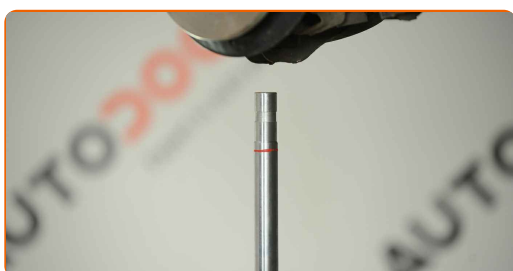
Support the arm. Use a hydraulic transmission jack.



- 20** Tighten the arm fastening to the subframe. Use a combination spanner #19. Use a drive socket #19. Use a torque wrench. Tighten it to 90 Nm torque.



- 21** Remove the support from under the arm.

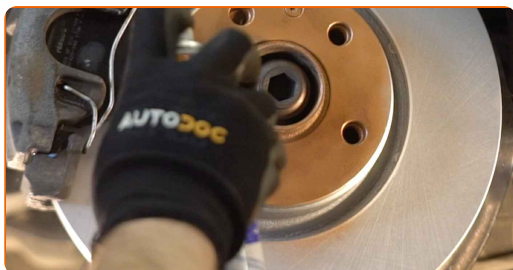


AUTODOC recommends:

- VW PASSAT Variant (3B5) – Do not lower the transmission jack sharply to avoid damaging components and mechanisms of the car.

- 22** Treat all joints of the arm. Use copper grease.

- 23** Treat the surface where the brake disc contacts the wheel rim. Use copper grease.



24

Clean the brake disk surface. Use a brake cleaner.



Replacement: rear suspension lower control arm – VW PASSAT Variant (3B5).
Tip from AUTODOC:

- After applying the spray, wait a few minutes.

25

Install the wheel.



AUTODOC recommends:

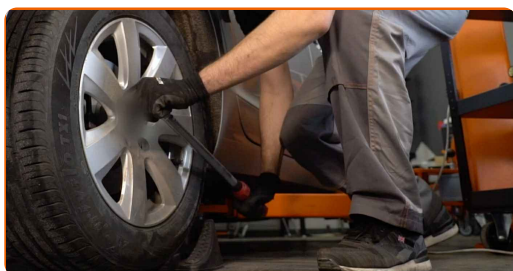
- Important! Hold the wheel while screwing in the fastening bolts. VW PASSAT Variant (3B5)

26

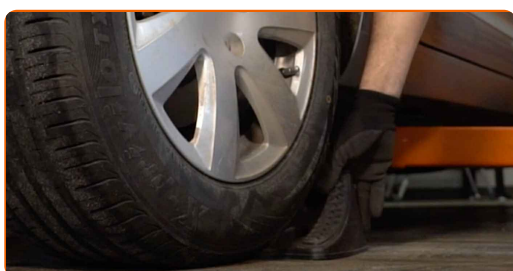
Screw in the wheel bolts. Use wheel impact socket #17.



- 27 Lower the car and working in a cross order, tighten the wheel bolts. Use wheel impact socket #17. Use a torque wrench. Tighten it to 120 nm torque.



- 28 Remove the jacks and chocks.



WELL DONE! 

VIEW MORE TUTORIALS

AUTODOC – TOP QUALITY AND AFFORDABLE CAR PARTS ONLINE

AUTODOC MOBILE APP: GREAT DEALS AND CONVENIENT SHOPPING



+ AUTODOC

GET IT ON
Google Play

Download on the
App Store

Download

A GREAT SELECTION OF SPARE PARTS FOR YOUR CAR

CONTROL ARM: A WIDE SELECTION

DISCLAIMER:

The document contains only general recommendations that may be useful for you when you perform repair or replacement work. AUTODOC shall not be liable for any loss, injury, damage of property occurring in the repair or replacement process due to incorrect use or misinterpretation of the provided information.

AUTODOC shall not be liable for any possible mistakes and uncertainties in this guide. The information provided is for information purposes only and cannot replace advice from specialists.

AUTODOC shall not be liable for incorrect or hazardous usage of equipment, tools and car parts. AUTODOC strongly recommends to be careful and observe the safety rules when performing repair or replacement works. Remember: usage of low quality auto parts does not guarantee you the appropriate level of road safety.

© Copyright 2023 – All the contents of this website, in particular texts, photographs and graphics, are protected by copyright. All rights, including reproduction, publication, editing and translation rights, are reserved by AUTODOC SE.