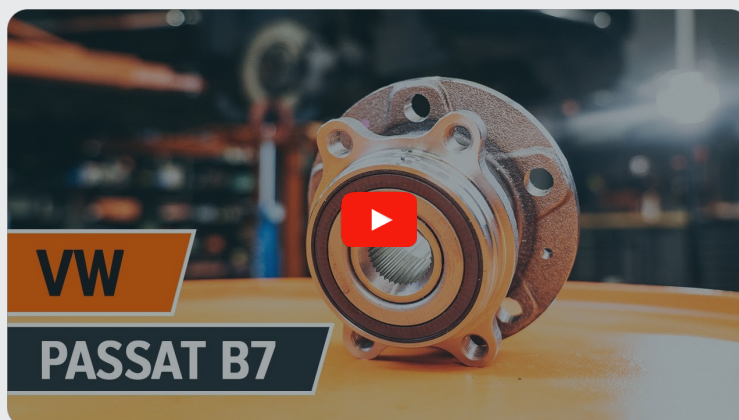




How to change front
wheel bearing on **VW**
PASSAT Estate Van (365)
– replacement guide

SIMILAR VIDEO TUTORIAL



This video shows the replacement procedure of a similar car part on another vehicle

Important!

This replacement procedure can be used for:

VW PASSAT Estate Van (365) 2.0 TFSI, VW PASSAT Estate Van (365) 3.6 FSi 4motion, VW PASSAT Estate Van (365) 2.0 TDi BlueMotion, VW PASSAT Estate Van (365) 1.8 TFSi, VW PASSAT Estate Van (365) 1.6 TDi BlueMotion, VW PASSAT Estate Van (365) 1.4 TSi BlueMotion

The steps may slightly vary depending on the car design.

This tutorial was created based on the replacement procedure for a similar car part on: VW Passat Saloon (362) 2.0 TDI

**REPLACEMENT: WHEEL BEARING – VW PASSAT
ESTATE VAN (365). LIST OF THE TOOLS YOU'LL NEED:**



- Wire brush
- WD-40 spray
- Brake cleaner
- Copper grease
- Torque wrench
- Combination spanner #18
- Drive socket # 16
- Drive socket # 18
- Drive socket # 21
- Drive socket # 27
- XZN socket bit # 6
- XZN socket bit # 12
- HEX bit No.H5
- HEX bit No.H7
- Torx bit T27
- Torx bit T30
- Wheel impact socket #17
- Ratchet wrench
- Tap wrench
- Rubber mallet
- Impact screwdriver
- Crow bar
- Wheel chock

Buy tools

AUTODOC recommends:

- Do not re-use the bearing assembly of your VW PASSAT Estate Van (365) car.
- The wheel hub bearing replacement procedure is identical for both wheels on the same axle.
- Please note: all work on the car – VW PASSAT Estate Van (365) – should be done with the engine switched off.

CARRY OUT REPLACEMENT IN THE FOLLOWING ORDER:

1 Open the hood.

2 Clean the brake fluid reservoir cap. Use a brake cleaner.

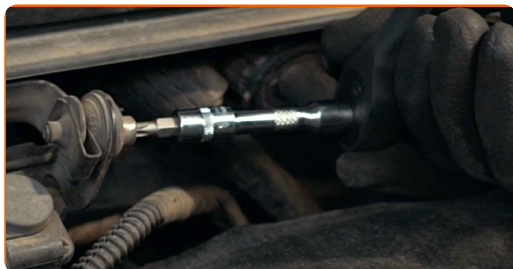


AUTODOC recommends:

- Replacement: wheel bearing – VW PASSAT Estate Van (365). After applying the spray, wait a few minutes.

3

Unscrew the engine solenoid valve bracket. Use Torx T27. Use a ratchet wrench.



4

Unscrew the brake fluid reservoir cap.



5

Secure the wheels with chocks.

6

Loosen the wheel mounting bolts. Use wheel impact socket #17.

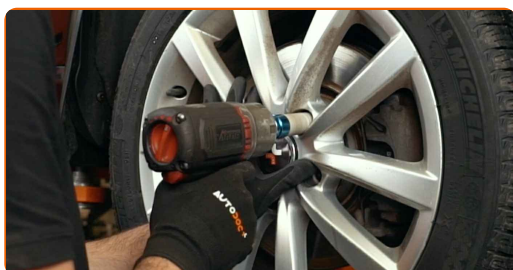


7

Raise the front of the car and secure on supports.

8

Unscrew the wheel bolts.



AUTODOC recommends:

- Warning! To avoid injury, hold the wheel while unscrewing the fastening bolts. VW PASSAT Estate Van (365)

9

Remove the wheel.



10

Spread the brake pads. Use a crowbar.



11

Remove the dust boot caps of the brake caliper guide pins. Use a crowbar.



12

Unscrew the brake caliper fastening. Use HEX No.H7. Use a ratchet wrench.



13

Detach the brake caliper retaining spring. Use a crowbar.



14

Remove the brake caliper.



Replacement: wheel bearing – VW PASSAT Estate Van (365). Professionals recommend:

- Tie the caliper to the suspension or to the body with a wire without disconnecting from the brake hose to prevent depressurization of the brake system.
- Make sure that the brake caliper is not hanging on the brake hose.
- Don't press the brake pedal after the brake caliper has been removed. As a result, the piston can fall out from the brake cylinder, and brake fluid leakage and depressurization of the system may occur.
- Check the brake caliper bracket, brake caliper guide pins and boots. Clean them. Replace, if necessary.

15 Remove the brake pads.



16 Loosen the fastener of the driveshaft. Use a drive socket #27. Use a tap wrench.



17 Clean the brake caliper bracket fasteners. Use a wire brush. Use WD-40 spray.



18 Unscrew the caliper bracket fastening. Use a drive socket #21. Use a ratchet wrench. Use a tap wrench.



19

Remove the caliper bracket.

**20**

Clean the brake disc fastener. Use a wire brush. Use WD-40 spray.

**21**

Unscrew the brake disc fastening. Use Torx T30. Use an impact screwdriver.

**22**

Remove the brake disc. Use a rubber mallet.



23

Clean the fasteners of the brake disc cover. Use a wire brush. Use WD-40 spray.



24

Unscrew the fasteners of the brake disc cover. Use Torx T27. Use a ratchet wrench.



25

Remove the brake disc cover.



26

Remove the fastening bolt.



27

Clean the fasteners of the wheel hub bearing. Use a wire brush. Use WD-40 spray.



28

Clean the fasteners connecting the ball joint to the suspension control arm. Use a wire brush. Use WD-40 spray.



29

Unscrew the fastener connecting the ball joint to the suspension control arm. Use a drive socket #16. Use a ratchet wrench.



30

Disconnect the ball joint from the arm.



31 Detach the driveshaft from the steering knuckle.



32 Clean all joints of the stabiliser link. Use a wire brush. Use WD-40 spray.



33 Unscrew the fastener connecting the stabilizer link to the shock strut. Use a drive socket #18. Use a ratchet wrench.



34 Remove the stabilizer rod.



35 Clean the fasteners of the wheel hub bearing. Use a wire brush. Use WD-40 spray.



36 Unscrew the hub bearing mounting. Use XZN #12. Use a ratchet wrench.



37 Remove the hub and the bearing together, since they are a sealed unit.



38 Unscrew the ABS sensor fastener. Use HEX No.H5. Use a ratchet wrench.



39 Disconnect the ABS sensor.



40 Clean the hub bearing mounting seat. Use a wire brush. Use WD-40 spray.



41 Connect the ABS sensor.



42 Tighten the fastener that connects the ABS sensor to the steering knuckle. Use HEX No.H5. Use a torque wrench. Tighten it to 7 Nm torque.



43 Install the new wheel hub with a bearing.



- 44 Tighten the fastener of the wheel hub bearing. Use XZN #12. Use a torque wrench. Tighten it to 74 Nm torque. Tighten it to 70 Nm torque.+90°



AUTODOC recommends:

- Important! Be sure to use new fasteners.

- 45 Treat the fasteners of the wheel hub bearing. Use copper grease.

- 46 Install the brake disc cover.

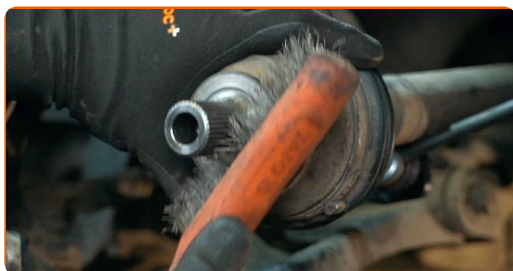


- 47 Screw in the fasteners of the brake disc cover. Use Torx T27. Use a ratchet wrench.



48

Clean the splines of the drive shaft CV joint. Use a wire brush. Use WD-40 spray.



49

Install the drive shaft.



50

Attach the ball joint to the control arm.



51

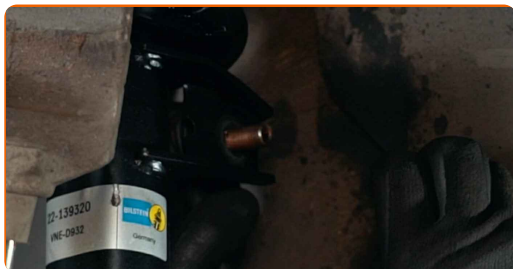
Tighten the fasteners connecting the ball joint to the control arm. Use a drive socket #16. Use a torque wrench. Tighten it to 60 Nm torque.



52

Clean the mounting seats of the stabiliser link. Use a wire brush. Use WD-40 spray.

53 Install the transverse stabilizer link.



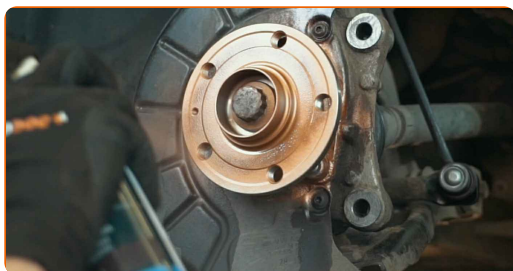
54 Tighten the fastener connecting the stabilizer link to the shock strut. Use a combination spanner #18. Use a drive socket #18. Use XZN #6. Use a torque wrench. Tighten it to 55 Nm torque.



55 Install and tighten the drive shaft bolt. Use a drive socket #27. Use a ratchet wrench.



56 Treat the hub where it contacts the brake disk. Use copper grease.



57 Install the brake disc.



58 Tighten the brake disc fastening. Use Torx T30. Use a torque wrench. Tighten it to 4 Nm torque.



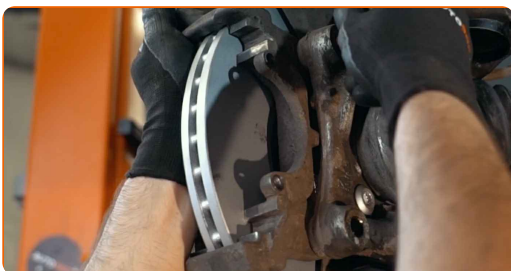
59 Clean the brake caliper bracket from dirt and dust. Use a wire brush. Use a brake cleaner.



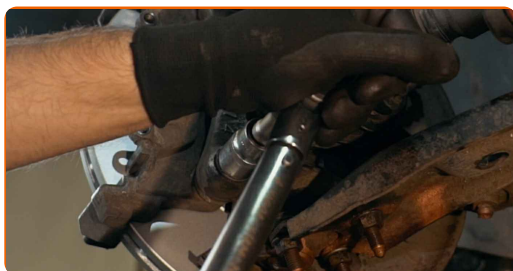
AUTODOC recommends:

- Replacement: wheel bearing – VW PASSAT Estate Van (365). After applying the spray, wait a few minutes.

60 Install the brake caliper bracket.



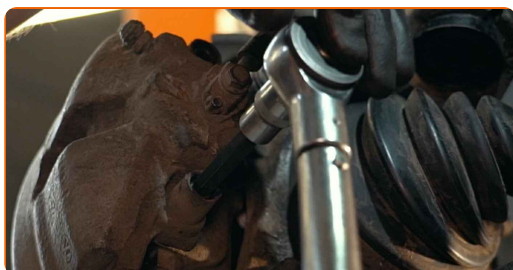
61 Tighten the brake caliper bracket. Use a drive socket #21. Use a torque wrench. Tighten it to 175 Nm torque.



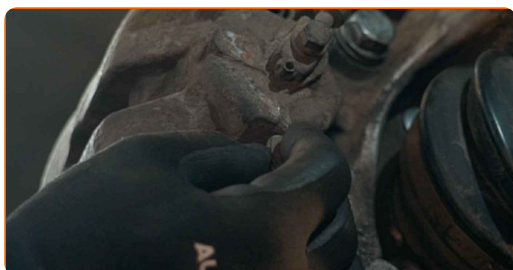
62 Install the brake pads.



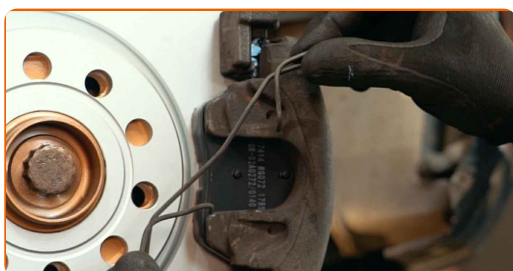
63 Install the brake caliper and fix it. Use HEX No.H7. Use a torque wrench. Tighten it to 30 Nm torque.



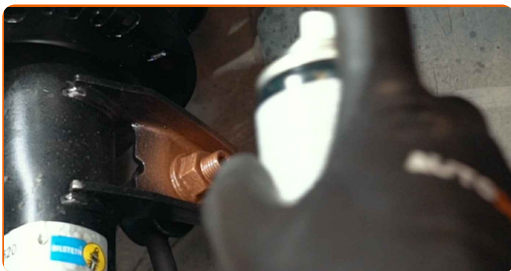
64 Install the dust boot caps of the brake caliper guide pins.



65 Install the brake caliper retaining spring. Use a crowbar.



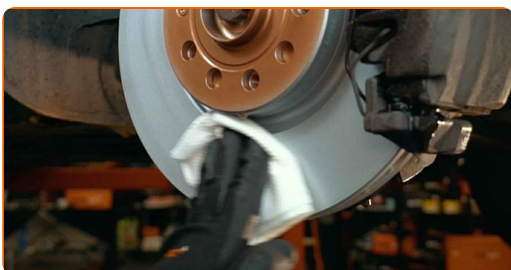
66 Treat all joints of the stabiliser link. Treat the fasteners of the ball joint. Use copper grease.



67 Treat the surface where the brake disc contacts the wheel rim. Use copper grease.



68 Clean the brake disk surface. Use a brake cleaner.



Replacement: wheel bearing – VW PASSAT Estate Van (365). AUTODOC experts recommend:

- After applying the spray, wait a few minutes.

69

Install the wheel.



AUTODOC recommends:

- Warning! To avoid injury, hold the wheel while screwing in the fastening bolts on the car. VW PASSAT Estate Van (365)

70

Screw in the wheel bolts. Use wheel impact socket #17.



71

Lower the car.

72

Tighten the bolt connecting the drive shaft to the wheel hub. Use a drive socket #27. Use a torque wrench. Tighten it to 70 Nm torque.+90°

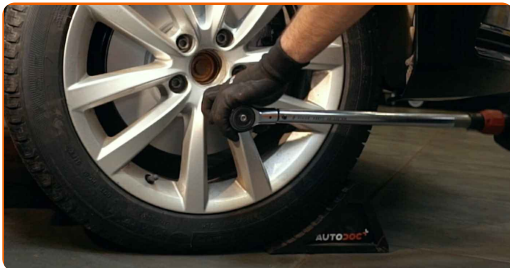


AUTODOC recommends:

- Important! Be sure to use new fasteners.

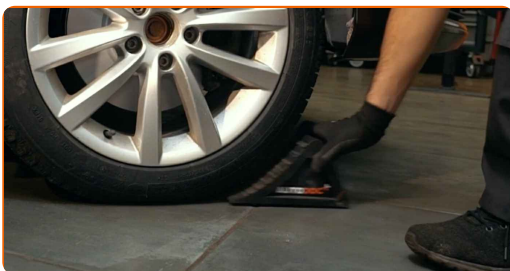
73

Tighten the wheel bolts using a criss-cross pattern. Use wheel impact socket #17. Use a torque wrench. Tighten it to 120 Nm torque.



74

Remove the jacks and chocks.



Replacement: wheel bearing – VW PASSAT Estate Van (365). Tip from AUTODOC:

- Check the brake fluid level in the expansion tank and refill if necessary.

75

Tighten the brake fluid reservoir cap.



76

Install the engine solenoid valve bracket. Use Torx T27. Use a ratchet wrench.



77

Close the hood.

WELL DONE! 

[VIEW MORE TUTORIALS](#)

AUTODOC – TOP QUALITY AND AFFORDABLE CAR PARTS ONLINE

AUTODOC MOBILE APP: GREAT DEALS AND CONVENIENT SHOPPING



+ AUTODOC

GET IT ON
Google Play

Download on the
App Store

Download

A GREAT SELECTION OF SPARE PARTS FOR YOUR CAR

WHEEL BEARING: A WIDE SELECTION

i DISCLAIMER:

The document contains only general recommendations that may be useful for you when you perform repair or replacement work. AUTODOC shall not be liable for any loss, injury, damage of property occurring in the repair or replacement process due to incorrect use or misinterpretation of the provided information.

AUTODOC shall not be liable for any possible mistakes and uncertainties in this guide. The information provided is for information purposes only and cannot replace advice from specialists.

AUTODOC shall not be liable for incorrect or hazardous usage of equipment, tools and car parts. AUTODOC strongly recommends to be careful and observe the safety rules when performing repair or replacement works. Remember: usage of low quality auto parts does not guarantee you the appropriate level of road safety.

© Copyright 2022 – All the contents of this website, in particular texts, photographs and graphics, are protected by copyright. All rights, including reproduction, publication, editing and translation rights, are reserved by AUTODOC GmbH.