



How to change rear  
brake shoes on **VW**  
**Passat B1 Estate (33)** –  
replacement guide

## SIMILAR VIDEO TUTORIAL



This video shows the replacement procedure of a similar car part on another vehicle

### Important!

This replacement procedure can be used for:

VW Passat B1 Estate (33) 1.3, VW Passat B1 Estate (33) 1.6 (YN), VW Passat B1 Estate (33) 1.6, VW Passat B1 Estate (33) 1.5 D, VW Passat B1 Estate (33) 1.6 i, VW Passat B1 Estate (33) 1.6 D

The steps may slightly vary depending on the car design.

This tutorial was created based on the replacement procedure for a similar car part on: VW Polo III Hatchback (6N1) 1.0

**REPLACEMENT: BRAKE SHOES – VW PASSAT B1 ESTATE (33). LIST OF THE TOOLS YOU'LL NEED:**



- Wire brush
- All-purpose cleaning spray
- Multipurpose grease
- Copper grease
- Torque wrench
- Combination spanner #10
- Drive socket # 24
- Wheel impact socket #17
- Brake shoe retaining spring compressor
- Flat screwdriver
- Ratchet wrench
- Hammer
- Crow bar
- Wheel chock

**Buy tools**

**Replacement: brake shoes – VW Passat B1 Estate (33). Tip from AUTODOC:**

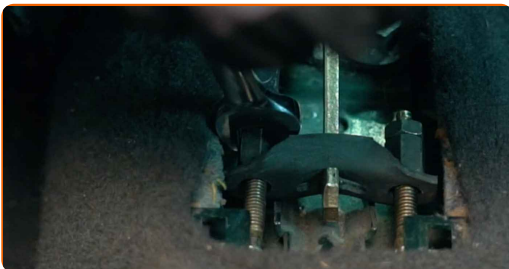
- Replace brake shoes as a set on an axle. This will ensure efficient braking.
- The replacement procedure is identical for brake shoes on the same axle.
- Please note: all work on the car – VW Passat B1 Estate (33) – should be done with the engine switched off.

**CARRY OUT REPLACEMENT IN THE FOLLOWING ORDER:**

**1** Engage the parking brake lever.



**2** Loosen the parking brake cable. Use a combination spanner #10.



**3** Secure the wheels with chocks.

4

Loosen the wheel mounting bolts. Use wheel impact socket #17.



5

Raise the rear of the car and secure on supports.

6

Unscrew the wheel bolts.



**AUTODOC recommends:**

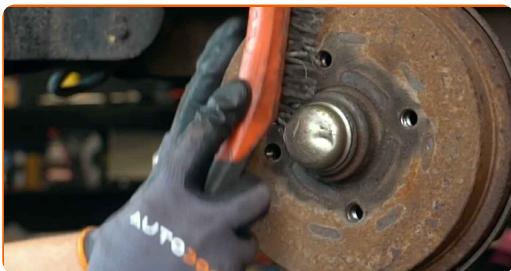
- Warning! To avoid injury, hold the wheel while unscrewing the fastening bolts. VW Passat B1 Estate (33)

7

Remove the wheel.



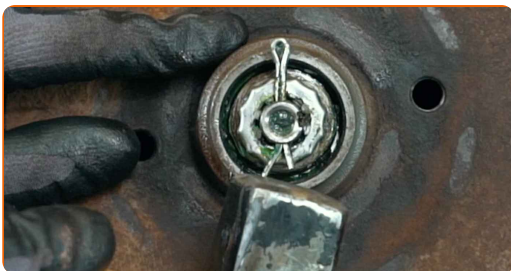
**8** Clean the brake drum. Use a wire brush. Use all-purpose cleaning spray.



**9** Remove the wheel hub nut cap. Use a crowbar. Use a hammer.



**10** Remove the cotter pin securing the hub nut. Use a crowbar. Use a hammer.



**11** Unscrew the hub nut. Use a drive socket #24. Use a ratchet wrench.



**12** Remove the brake drum assembled with the wheel hub bearing.



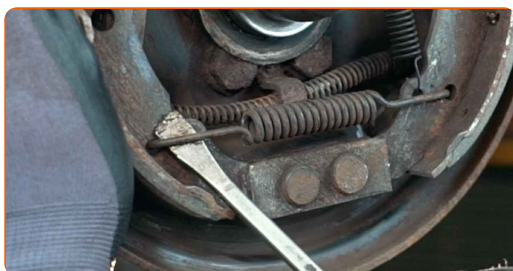
Replacement: brake shoes – VW Passat B1 Estate (33). Professionals recommend:

- Examine the brake drum. Replace it if necessary.

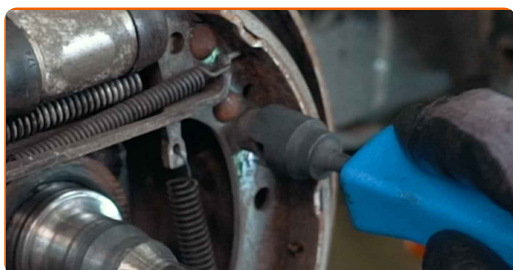
**13** Clean the fasteners of the brake shoes. Use all-purpose cleaning spray.



**14** Remove the lower return spring of brake shoes. Use a crowbar.



**15** Remove the retainers of the drum brake shoes. Use a brake shoe retaining spring compressor.





**16** Remove the hold-down spring. Use a crowbar.



**17** Disconnect the parking brake cable. Use a crowbar.



**18** Remove both shoes from the mounting bracket.



**Replacement: brake shoes – VW Passat B1 Estate (33). Tip from AUTODOC experts:**

- Don't press the brake pedal after removing the rear brake drum shoes. This will cause the piston to fall out of the brake cylinder, leakage of brake fluid and depressurization of the system.



**19** Remove the upper spring and the adjuster. Use a flat screwdriver.



**20** Remove the brake shoe adjuster lever.



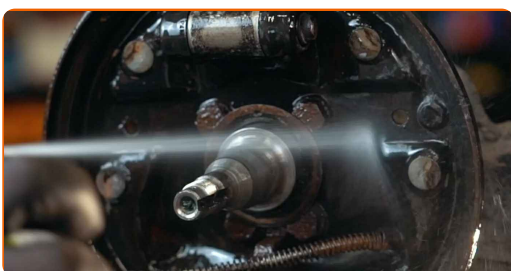
**21** Install the brake shoe adjuster lever.



**22** Install the upper retaining springs and adjustment mechanism on new brake shoes. Use a flat screwdriver.



**23** Clean the mounting seats of the brake shoes. Use all-purpose cleaning spray.



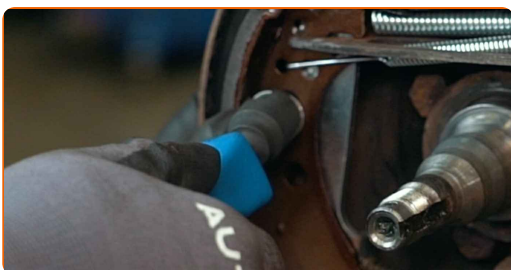
**24** Connect the parking brake cable to the parking brake lever.



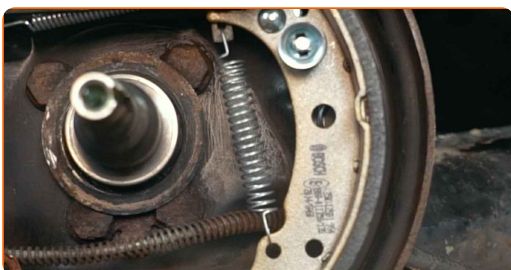
**25** Install the brake shoes on the working brake cylinder on the bracket and on the brake-support plate bracket.



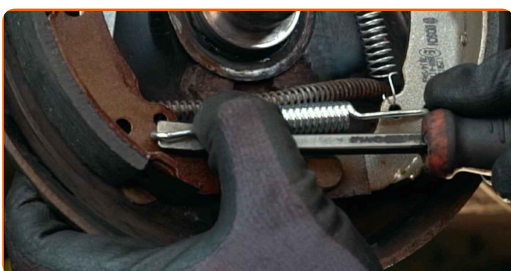
**26** Install the retainers of the drum brake shoes. Use a brake shoe retaining spring compressor.



**27** Install the hold-down spring.



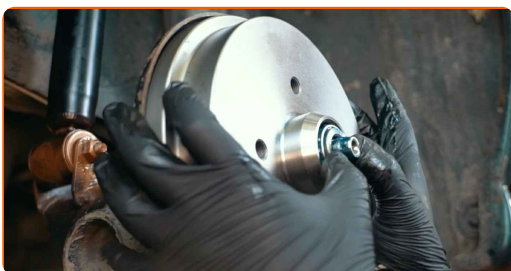
**28** Install the lower return spring. Use a crowbar.



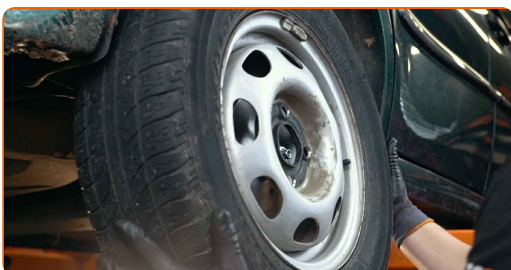
**29** Treat the wheel hub in the area where it contacts the brake drum. Use a multipurpose grease.



**30** Install the brake drum assembled with the wheel hub bearing.



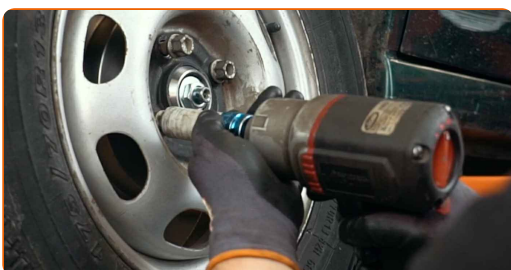
**31** Install the wheel.



**AUTODOC recommends:**

- Warning! To avoid injury, hold the wheel while screwing in the fastening bolts on the car. VW Passat B1 Estate (33)

**32** Screw in the wheel bolts. Use wheel impact socket #17.



33

Screw on the hub nut. Use a drive socket #24. Use a ratchet wrench.



Replacement: brake shoes – VW Passat B1 Estate (33). Tip:

- Align the brake drum.

34

Unscrew the wheel bolts. Use wheel impact socket #17.

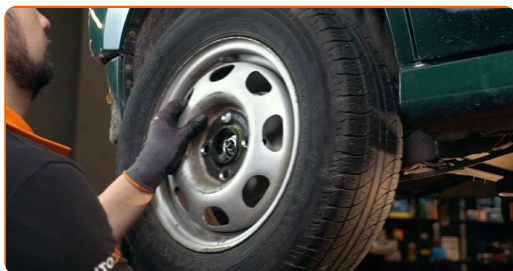


AUTODOC recommends:

- Important! Hold the wheel while unscrewing the fastening bolts. VW Passat B1 Estate (33)

35

Remove the wheel.





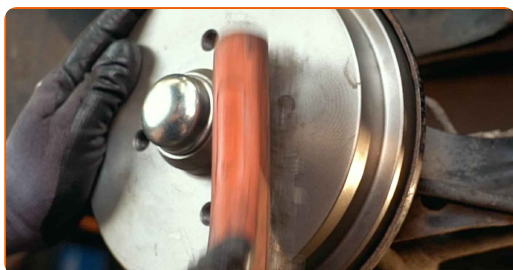
**36** Install a new hub nut cotter pin. Use a crowbar. Use a hammer.



**37** Install the cap of the hub nut. Use a hammer.



**38** Clean the wheel rim mounting seat. Use a wire brush.



**39** Treat the surface where the wheel rim contacts the brake drum. Use copper grease.



**40** Install the wheel.



**AUTODOC recommends:**

- Warning! To avoid injury, hold the wheel while screwing in the fastening bolts on the car. VW Passat B1 Estate (33)

**41**

Screw in the wheel bolts. Use wheel impact socket #17.



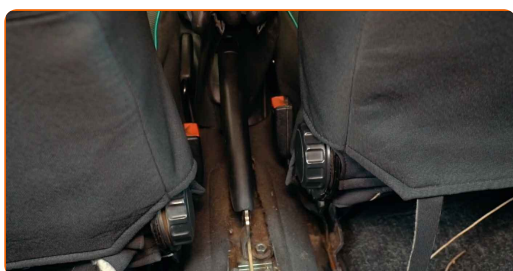
**42**

Adjust the parking brake cable tension. Use a combination spanner #10.



**43**

Release the parking brake lever.



**44**

Lower the car and working in a cross order, tighten the wheel bolts. Use wheel impact socket #17. Use a torque wrench. Tighten it to 110 Nm torque.



**45**

Remove the jacks and chocks.



**WELL DONE!** 

**VIEW MORE TUTORIALS**



# AUTODOC – TOP QUALITY AND AFFORDABLE CAR PARTS ONLINE

**AUTODOC MOBILE APP: GREAT DEALS AND CONVENIENT SHOPPING**



**+ AUTODOC**

GET IT ON  
**Google Play**

 Download on the  
**App Store**

**Download**

**A GREAT SELECTION OF SPARE PARTS FOR YOUR CAR**

**BRAKE SHOES: A WIDE SELECTION**

## **DISCLAIMER:**

The document contains only general recommendations that may be useful for you when you perform repair or replacement work. AUTODOC shall not be liable for any loss, injury, damage of property occurring in the repair or replacement process due to incorrect use or misinterpretation of the provided information.

AUTODOC shall not be liable for any possible mistakes and uncertainties in this guide. The information provided is for information purposes only and cannot replace advice from specialists.

AUTODOC shall not be liable for incorrect or hazardous usage of equipment, tools and car parts. AUTODOC strongly recommends to be careful and observe the safety rules when performing repair or replacement works. Remember: usage of low quality auto parts does not guarantee you the appropriate level of road safety.

© Copyright 2022 – All the contents of this website, in particular texts, photographs and graphics, are protected by copyright. All rights, including reproduction, publication, editing and translation rights, are reserved by AUTODOC GmbH.