



How to change fuel filter
on **VW New Beetle**
Hatchback (9C1, 1C1) –
replacement guide

SIMILAR VIDEO TUTORIAL



This video shows the replacement procedure of a similar car part on another vehicle

Important!

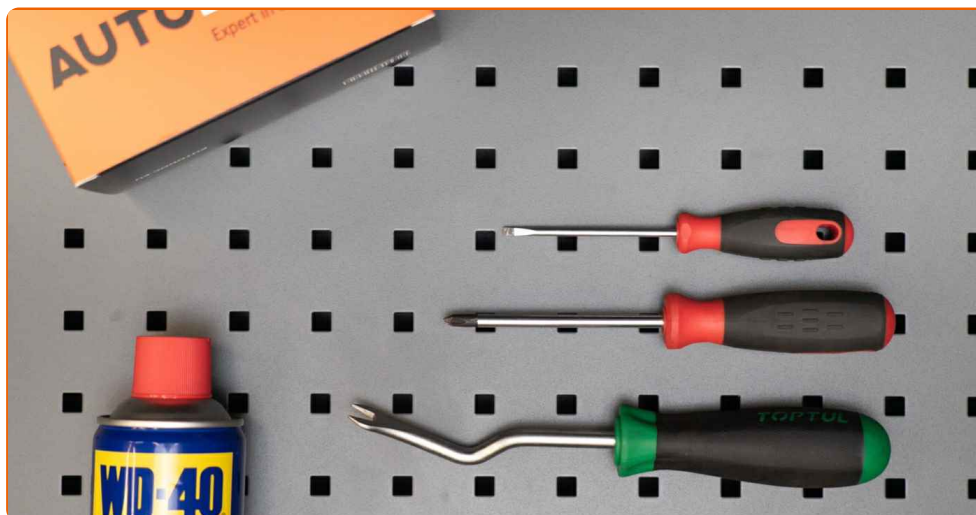
This replacement procedure can be used for:

VW New Beetle Hatchback (9C1, 1C1) 2.5

The steps may slightly vary depending on the car design.

This tutorial was created based on the replacement procedure for a similar car part on: VW Caddy III Estate (2KB, 2KJ, 2CB, 2CJ) 1.4

REPLACEMENT: FUEL FILTER – VW NEW BEETLE HATCHBACK (9C1, 1C1). TOOLS YOU MIGHT NEED:



- WD-40 spray
- Phillips screwdriver
- Flat screwdriver
- Fluid container
- Crow bar

Buy tools

Replacement: fuel filter – VW New Beetle Hatchback (9C1, 1C1). AUTODOC experts recommend:

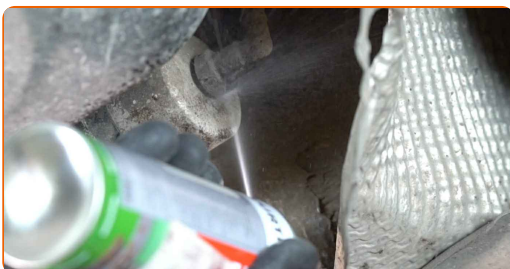
- Ensure adequate ventilation of the workplace. Fuel vapors are poisonous.
- All work should be done with the engine stopped.

REPLACEMENT: FUEL FILTER – VW NEW BEETLE HATCHBACK (9C1, 1C1). RECOMMENDED SEQUENCE OF STEPS:

1 Open the fuel door. Unscrew the fuel filler cap.

2 Lift the car using a jack or place it over an inspection pit.

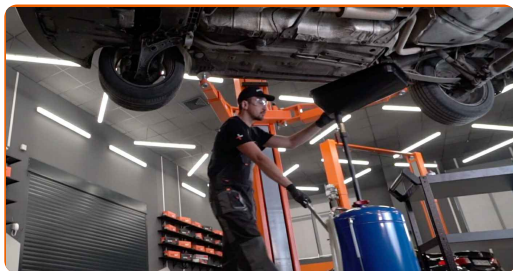
3 Treat the fasteners attaching the tubes to the fuel filter. Use WD-40 spray.



4 Loosen the fuel filter mounting. Use a Phillips screwdriver.



5 Prepare a container for fluids.



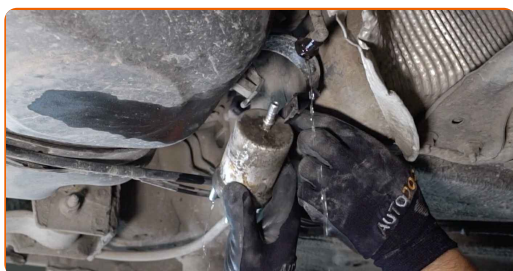
6 Remove the retainers of the fasteners of the fuel filter tubes. Use a flat screwdriver. Detach the tubes from the fuel filter.



Replacement: fuel filter – VW New Beetle Hatchback (9C1, 1C1). Tip:

- Be careful! Fuel may leak from the filter housing and hoses.

7 Remove the fuel filter. Put the old filter cartridge in the container.



8 Install a new fuel filter.

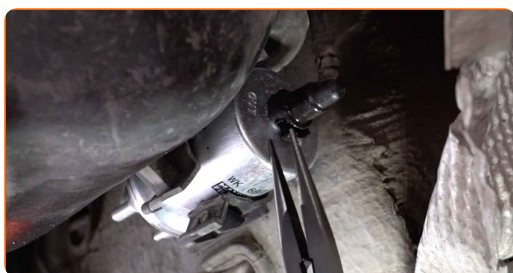


Replacement: fuel filter – VW New Beetle Hatchback (9C1, 1C1). Professionals recommend:

- Remember, it is important not to mix up the input and output of the filter. Arrows on the filter indicate the direction of fuel flow.
- During installation, take care to prevent dust and dirt from getting into the fuel filter housing.
- Take care to only use quality filters.

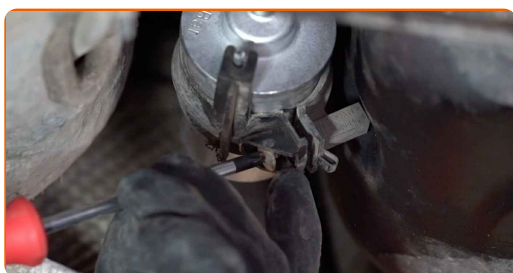
9

Attach the tubes to the fuel filter. Install the retainers of the fasteners of the fuel filter tubes.



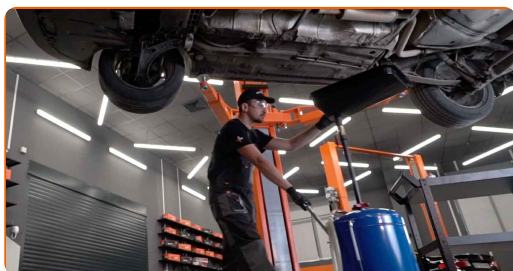
10

Tighten the fuel filter fasteners. Use a Phillips screwdriver.

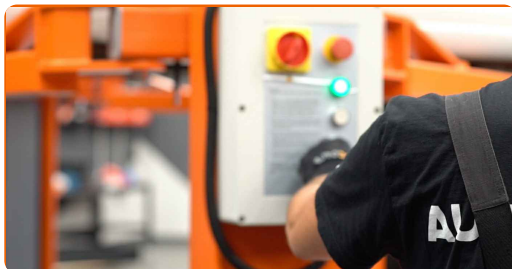


11

Take the fluid container away from under the fuel filter.



12 Lower the car.



13 Tighten the fuel filler cap. Close the fuel door.

Replacement: fuel filter – VW New Beetle Hatchback (9C1, 1C1). Tip from AUTODOC experts:

- Before starting off, switch the ignition on and off several times. This should be done to activate the fuel pump to make it pump fuel through the fuel system.

14 Run the engine for a few minutes.

Replacement: fuel filter – VW New Beetle Hatchback (9C1, 1C1). AUTODOC recommends:

- To protect the environment from pollution, be sure to dispose of the used filters at special collection points.

WELL DONE! 

VIEW MORE TUTORIALS

AUTODOC – TOP QUALITY AND AFFORDABLE CAR PARTS ONLINE

AUTODOC MOBILE APP: GREAT DEALS AND CONVENIENT SHOPPING

A GREAT SELECTION OF SPARE PARTS FOR YOUR CAR

FUEL FILTER: A WIDE SELECTION

DISCLAIMER:

The document contains only general recommendations that may be useful for you when you perform repair or replacement work. AUTODOC shall not be liable for any loss, injury, damage of property occurring in the repair or replacement process due to incorrect use or misinterpretation of the provided information.

AUTODOC shall not be liable for any possible mistakes and uncertainties in this guide. The information provided is for information purposes only and cannot replace advice from specialists.

AUTODOC shall not be liable for incorrect or hazardous usage of equipment, tools and car parts. AUTODOC strongly recommends to be careful and observe the safety rules when performing repair or replacement works. Remember: usage of low quality auto parts does not guarantee you the appropriate level of road safety.

© Copyright 2021 – All the contents of this website, in particular texts, photographs and graphics, are protected by copyright. All rights, including reproduction, publication, editing and translation rights, are reserved by AUTODOC GmbH.