



How to change front  
brake pads on **VW New  
Beetle Hatchback (9C1,  
1C1)** – replacement guide

## SIMILAR VIDEO TUTORIAL



This video shows the replacement procedure of a similar car part on another vehicle

### **Important!**

This replacement procedure can be used for:

VW New Beetle Hatchback (9C1, 1C1) 2.0, VW New Beetle Hatchback (9C1, 1C1) 1.9 TDI, VW New Beetle Hatchback (9C1, 1C1) 1.6, VW New Beetle Hatchback (9C1, 1C1) 1.4, VW New Beetle Hatchback (9C1, 1C1) 2.5

The steps may slightly vary depending on the car design.

This tutorial was created based on the replacement procedure for a similar car part on: VW Golf V Hatchback (1K1) 1.6

REPLACEMENT: BRAKE PADS – VW NEW BEETLE  
HATCHBACK (9C1, 1C1). TOOLS YOU MIGHT NEED:



- Wire brush
- Brake cleaner
- Anti-squeal paste
- Copper grease
- HEX bit No.H7
- Wheel impact socket #17
- Brake caliper wind back tool
- Ratchet wrench
- Torque wrench
- Crow bar
- Wheel chock

[Buy tools](#)

Replacement: brake pads – VW New Beetle Hatchback (9C1, 1C1). AUTODOC experts recommend:

- Perform the replacement of brake pads in complete set for each axis. This provides effective braking.
- The replacement procedure is identical for all brake pads on the same axle.
- Please note: all work on the car – VW New Beetle Hatchback (9C1, 1C1) – should be done with the engine switched off.

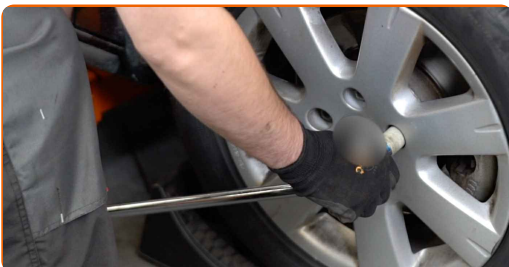
## CARRY OUT REPLACEMENT IN THE FOLLOWING ORDER:

**1** Open the bonnet. Unscrew the brake fluid reservoir cap.

**2** Secure the wheels with chocks.



**3** Loosen the wheel mounting bolts. Use wheel impact socket #17.



4

Raise the front of the car and secure on supports.

5

Unscrew the wheel bolts.



**AUTODOC recommends:**

- Important! Hold the wheel while unscrewing the fastening bolts. VW New Beetle Hatchback (9C1, 1C1)

6

Remove the wheel.



7

Remove the dust boot caps of the brake caliper guide pins. Use a crowbar.



8

Unscrew the brake caliper fastening. Use HEX No.H7. Use a ratchet wrench.



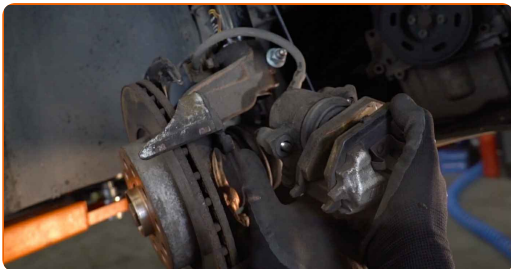
9

Spread the brake pads. Use a crowbar.



10

Remove the brake pads. Use a crowbar.

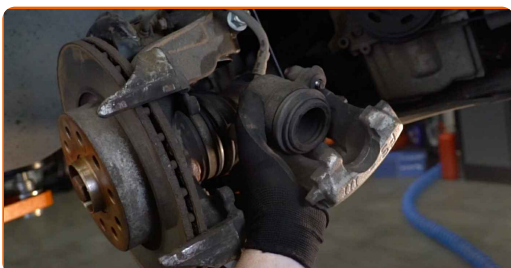


Replacement: brake pads – VW New Beetle Hatchback (9C1, 1C1).  
Professionals recommend:

- Measure the brake disc thickness. Upon reaching the wear limit the part must be replaced.

11

Remove the brake caliper.

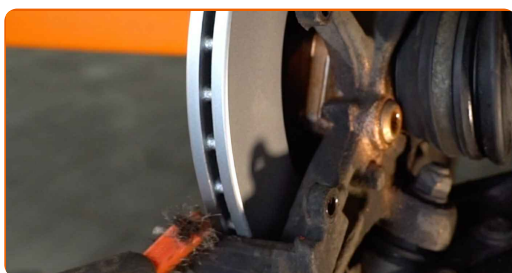


Replacement: brake pads – VW New Beetle Hatchback (9C1, 1C1). AUTODOC experts recommend:

- Tie the caliper to the suspension or to the body with a wire without disconnecting from the brake hose to prevent depressurization of the brake system.
- Make sure that the brake caliper is not hanging on the brake hose.
- Don't press the brake pedal after the brake caliper has been removed. As a result, the piston can fall out from the brake cylinder, and brake fluid leakage and depressurization of the system may occur.
- Check the brake caliper bracket, brake caliper guide pins and boots. Clean them. Replace, if necessary.

12

Clean the brake caliper bracket from dirt and dust. Use a wire brush. Use a brake cleaner.



AUTODOC recommends:

- After applying the spray, wait a few minutes.

13

Treat the brake caliper piston. Use a brake cleaner.

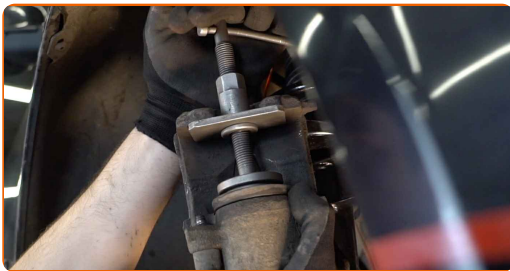


**AUTODOC recommends:**

- Replacement: brake pads – VW New Beetle Hatchback (9C1, 1C1). After applying the spray, wait a few minutes.

14

Press in the brake caliper piston. Use brake caliper wind back tool.



15

Treat the brake pads in the area where their surface comes into contact with the brake caliper bracket. Use anti-squeal paste.





Replacement: brake pads – VW New Beetle Hatchback (9C1, 1C1). Tip from AUTODOC:

- Make sure the disc surface is clean before installing the pads.

16

Install new brake pads.



Replacement: brake pads – VW New Beetle Hatchback (9C1, 1C1). Professionals recommend:

- Make sure the pads are installed with linings facing the disc.

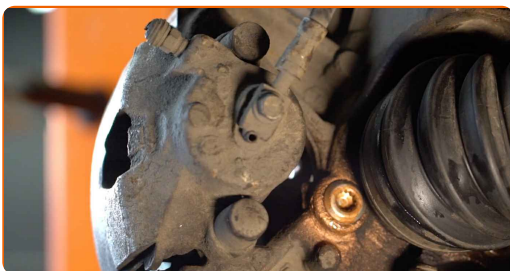
17

Install the brake caliper and fix it. Use HEX No.H7. Use a torque wrench. Tighten it to 30 Nm torque.



18

Install the dust boot caps of the brake caliper guide pins.



19

Treat the surface where the brake disc contacts the wheel rim. Use copper grease.



20

Clean the brake disk surface. Use a brake cleaner.



### AUTODOC recommends:

- Replacement: brake pads – VW New Beetle Hatchback (9C1, 1C1). After applying the spray, wait a few minutes.

21

Install the wheel.



### AUTODOC recommends:

- Important! Hold the wheel while screwing in the fastening bolts. VW New Beetle Hatchback (9C1, 1C1)

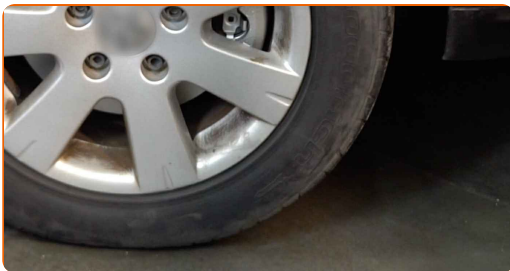
22 Screw in the wheel bolts. Use wheel impact socket #17.



23 Lower the car and working in a cross order, tighten the wheel bolts. Use a torque wrench. Tighten it to 120 Nm torque.



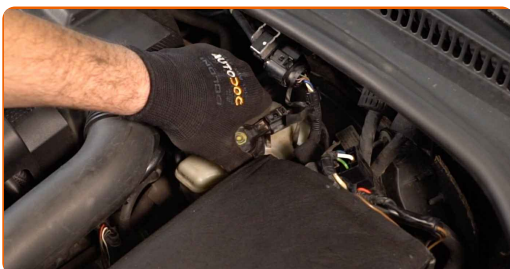
24 Remove the jacks and chocks.



Replacement: brake pads – VW New Beetle Hatchback (9C1, 1C1). Tip from AUTODOC experts:

- Check the brake fluid level in the expansion tank and refill if necessary.

25 Tighten the brake fluid reservoir cap.



Replacement: brake pads – VW New Beetle Hatchback (9C1, 1C1). AUTODOC recommends:

- Without starting the engine, press the brake pedal several times until you feel significant resistance.

26

Close the hood.

Replacement: brake pads – VW New Beetle Hatchback (9C1, 1C1). Tip from AUTODOC:

- Slow down smoothly for first 150-200 km after the brake pads replacement. Avoid unnecessary and sharp braking to a stop.

**WELL DONE!** 

[VIEW MORE TUTORIALS](#)

# AUTODOC – TOP QUALITY AND AFFORDABLE CAR PARTS ONLINE

**AUTODOC MOBILE APP: GREAT DEALS AND CONVENIENT SHOPPING**



**AUTODOC**

GET IT ON  
 **Google Play**

Download on the  
 **App Store**

**Download**

**A GREAT SELECTION OF SPARE PARTS FOR YOUR CAR**

**BRAKE PADS: A WIDE SELECTION**

## **DISCLAIMER:**

The document contains only general recommendations that may be useful for you when you perform repair or replacement work. AUTODOC shall not be liable for any loss, injury, damage of property occurring in the repair or replacement process due to incorrect use or misinterpretation of the provided information.

AUTODOC shall not be liable for any possible mistakes and uncertainties in this guide. The information provided is for information purposes only and cannot replace advice from specialists.

AUTODOC shall not be liable for incorrect or hazardous usage of equipment, tools and car parts. AUTODOC strongly recommends to be careful and observe the safety rules when performing repair or replacement works. Remember: usage of low quality auto parts does not guarantee you the appropriate level of road safety.

© Copyright 2022 – All the contents of this website, in particular texts, photographs and graphics, are protected by copyright. All rights, including reproduction, publication, editing and translation rights, are reserved by AUTODOC GmbH.