



How to change
serpentine belt on **VW**
New Beetle Convertible
(1Y7) – replacement
guide

SIMILAR VIDEO TUTORIAL



This video shows the replacement procedure of a similar car part on another vehicle

Important!

This replacement procedure can be used for:

VW New Beetle Convertible (1Y7) 1.6, VW New Beetle Convertible (1Y7) 2.0, VW New Beetle Convertible (1Y7) 1.9 TDI, VW New Beetle Convertible (1Y7) 1.8 T

The steps may slightly vary depending on the car design.

This tutorial was created based on the replacement procedure for a similar car part on: VW Golf IV Hatchback (1J1) 1.6

REPLACEMENT: SERPENTINE BELT – VW NEW BEETLE CONVERTIBLE (1Y7). TOOLS YOU MIGHT NEED:



- Brake cleaner
- Copper grease
- Drive socket # 16
- Torx bit T20
- Combination spanner #16
- Wheel impact socket #17
- Ratchet wrench
- Torque wrench
- Tap wrench
- Flat Screwdriver
- Fender cover
- Wheel chock

Buy tools

Replacement: serpentine belt – VW New Beetle Convertible (1Y7). AUTODOC experts recommend:

- All work should be done with the engine stopped.

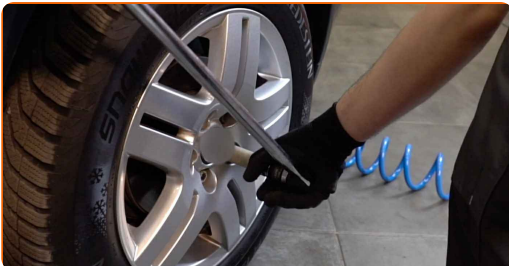
REPLACEMENT: SERPENTINE BELT – VW NEW BEETLE CONVERTIBLE (1Y7). TAKE THE FOLLOWING STEPS:

1 Open the hood.

2 Use a fender protection cover to prevent damaging paintwork and plastic parts of the car.

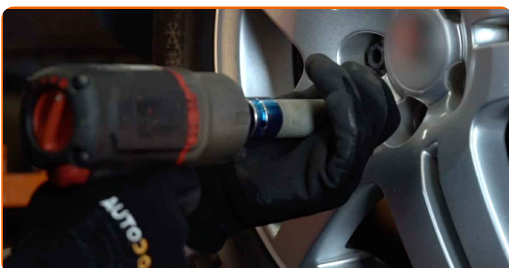
3 Secure the wheels with chocks.

4 Loosen the wheel mounting bolts. Use wheel impact socket #17.



5 Lift the car using a jack or place it over an inspection pit.

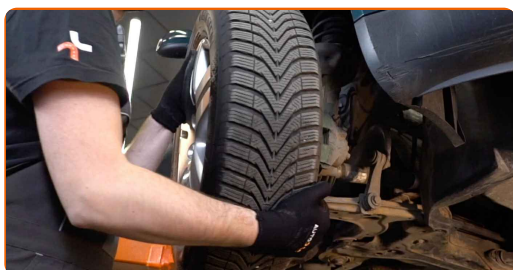
6 Unscrew the wheel bolts.



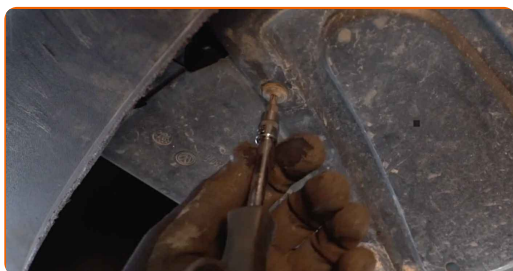
AUTODOC recommends:

- Warning! To avoid injury, hold the wheel while unscrewing the fastening bolts. VW New Beetle Convertible (1Y7)

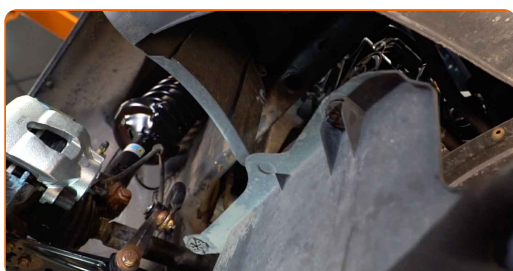
7 Remove the wheel.



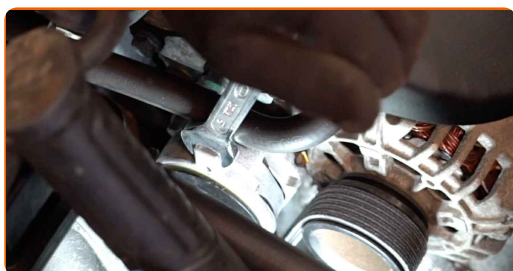
8 Undo the fasteners of the oil pan lower cover. Unscrew the fastener of the side plastic cover of the engine. Use Torx T20. Use a ratchet wrench. Use a flat screwdriver.



9 Remove the oil pan cover. Remove the side plastic cover.

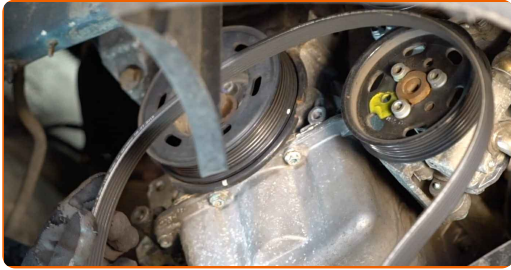


10 Pull aside the V-ribbed belt tensioner pulley. Use a combination spanner #16.



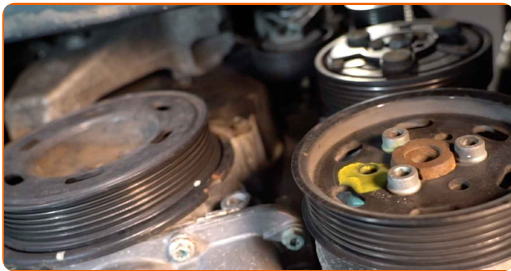
11

Remove the V-ribbed belt.



12

Return the tensioner pulley to its initial position.



Replacement: serpentine belt – VW New Beetle Convertible (1Y7). Tip from AUTODOC:

- Check the condition of the tensioner pulley and idler pulley. Replace them if necessary.

13

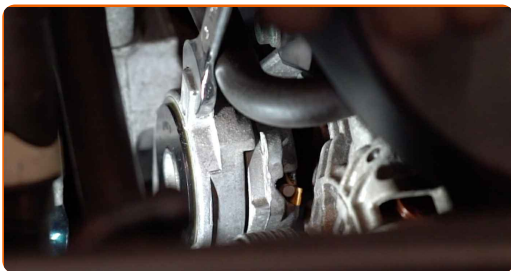
Install the V-ribbed belt.



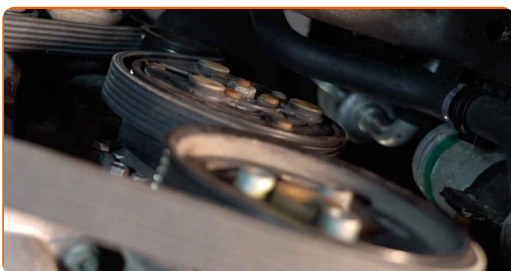
Replacement: serpentine belt – VW New Beetle Convertible (1Y7). Tip:

- Make sure that the V-ribbed belt fits all pulleys snugly.

14 Pull aside the V-ribbed belt tensioner pulley. Use a drive socket #16. Use a tap wrench.



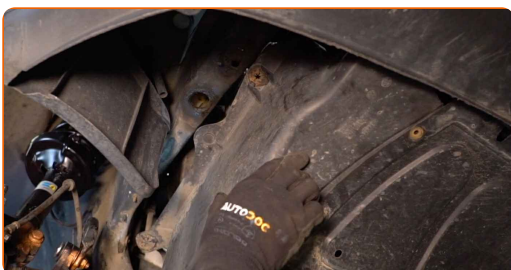
15 Place the V-ribbed belt on the tensioner pulley.



16 Return the tensioner pulley to its initial position.



17 Install the side plastic panel. Reinstall the oil pan lower cover.



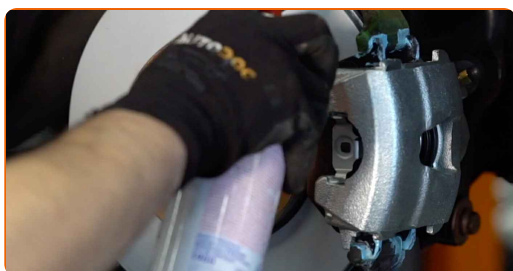
- 18** Screw in the fasteners of the side plastic cover of the engine. Tighten the fasteners of the oil pan lower cover. Use Torx T20. Use a ratchet wrench. Use a flat screwdriver.



- 19** Treat the surface where the brake disc contacts the wheel rim. Use copper grease.



- 20** Clean the brake disk surface. Use a brake cleaner.



AUTODOC recommends:

- Replacement: serpentine belt – VW New Beetle Convertible (1Y7). After applying the spray, wait a few minutes.

21 Install the wheel.



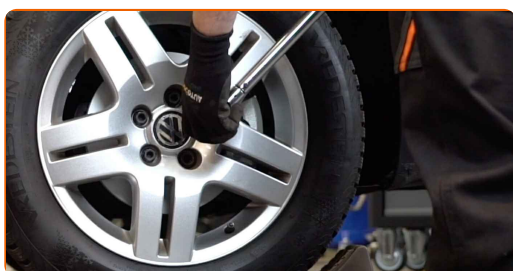
AUTODOC recommends:

- Important! Hold the wheel while screwing in the fastening bolts. VW New Beetle Convertible (1Y7)

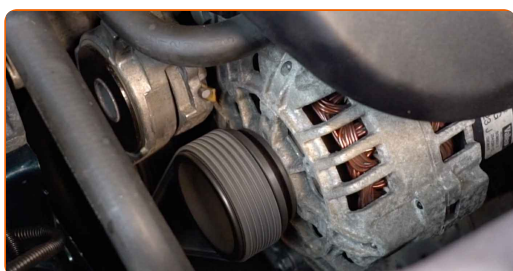
22 Screw in the wheel bolts. Use wheel impact socket #17.



23 Lower the car and working in a cross order, tighten the wheel bolts. Use a torque wrench. Tighten it to 120 nm torque.



24 Switch on the ignition. This is necessary in order to make sure that the component operates properly.



25 Remove the fender protection cover.

26 Close the hood.

27 Remove the jacks and chocks.

WELL DONE! 

VIEW MORE TUTORIALS

AUTODOC – TOP QUALITY AND AFFORDABLE CAR PARTS ONLINE

AUTODOC MOBILE APP: GREAT DEALS AND CONVENIENT SHOPPING



+ AUTODOC

GET IT ON
Google Play

 Download on the
App Store

Download

A GREAT SELECTION OF SPARE PARTS FOR YOUR CAR

SERPENTINE BELT: A WIDE SELECTION

DISCLAIMER:

The document contains only general recommendations that may be useful for you when you perform repair or replacement work. AUTODOC shall not be liable for any loss, injury, damage of property occurring in the repair or replacement process due to incorrect use or misinterpretation of the provided information.

AUTODOC shall not be liable for any possible mistakes and uncertainties in this guide. The information provided is for information purposes only and cannot replace advice from specialists.

AUTODOC shall not be liable for incorrect or hazardous usage of equipment, tools and car parts. AUTODOC strongly recommends to be careful and observe the safety rules when performing repair or replacement works. Remember: usage of low quality auto parts does not guarantee you the appropriate level of road safety.

© Copyright 2022 – All the contents of this website, in particular texts, photographs and graphics, are protected by copyright. All rights, including reproduction, publication, editing and translation rights, are reserved by AUTODOC GmbH.