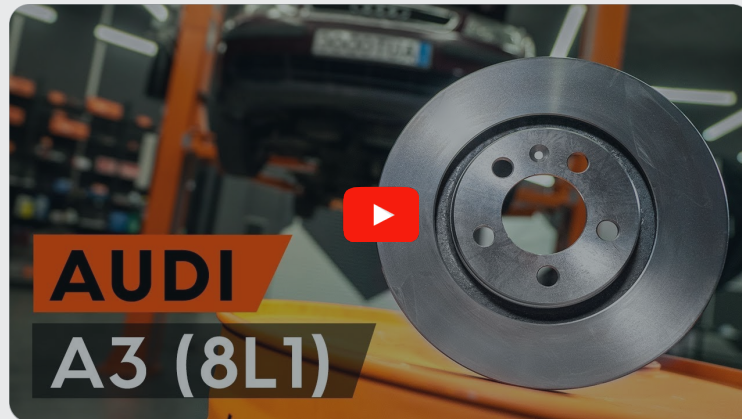




How to change front
brake discs on **VW New
Beetle Convertible (1Y7)**
– replacement guide

SIMILAR VIDEO TUTORIAL



This video shows the replacement procedure of a similar car part on another vehicle

Important!

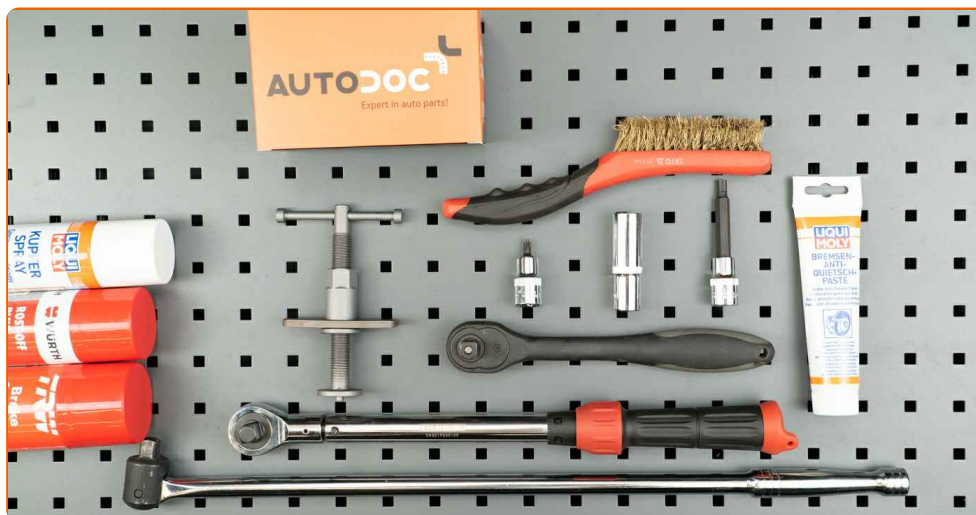
This replacement procedure can be used for:

VW New Beetle Convertible (1Y7) 1.6, VW New Beetle Convertible (1Y7) 2.0, VW New Beetle Convertible (1Y7) 1.9 TDI, VW New Beetle Convertible (1Y7) 1.4, VW New Beetle Convertible (1Y7) 1.8 T, VW New Beetle Convertible (1Y7) 2.5

The steps may slightly vary depending on the car design.

This tutorial was created based on the replacement procedure for a similar car part on: AUDI A3 Hatchback (8L1) 1.8

REPLACEMENT: BRAKE DISCS – VW NEW BEETLE CONVERTIBLE (1Y7). LIST OF THE TOOLS YOU'LL NEED:



- Wire brush
- WD-40 spray
- Brake cleaner
- Copper grease
- Torque wrench
- HEX bit No.H7.
- Torx bit T30
- Wheel impact socket #17
- Crow bar
- Rubber mallet
- Wheel chock

Buy tools

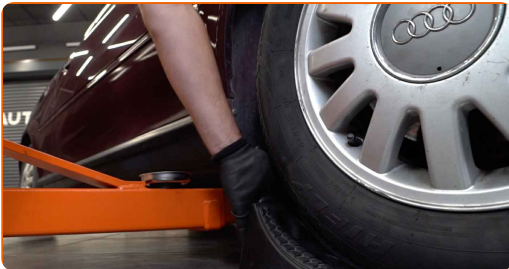
Replacement: brake discs – VW New Beetle Convertible (1Y7). AUTODOC experts recommend:

- Replace the brake disks on the car VW New Beetle Convertible (1Y7) in complete set for each axis. Regardless of the state of components. This will ensure even braking.
- The replacement procedure is identical for both brake disks on the same axle.
- When changing the brake discs, always replace the brake pads.
- All work should be done with the engine stopped.

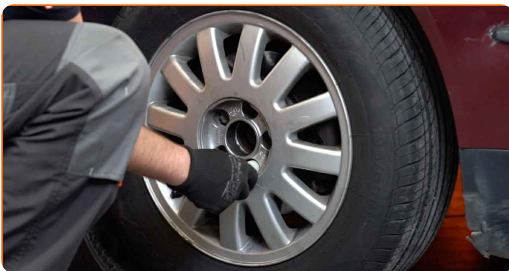
REPLACEMENT: BRAKE DISCS – VW NEW BEETLE CONVERTIBLE (1Y7). USE THE FOLLOWING PROCEDURE:

1 Open the bonnet. Unscrew the brake fluid reservoir cap.

2 Secure the wheels with chocks.

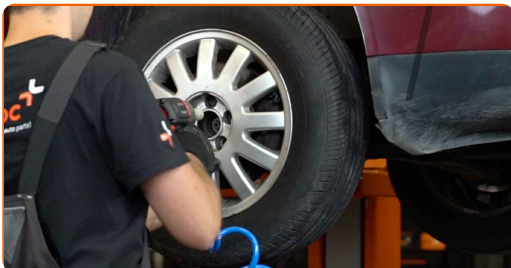


3 Loosen the wheel mounting bolts. Use wheel impact socket #17.



4 Raise the front of the car and secure on supports.

5 Unscrew the wheel bolts.



Replacement: brake discs – VW New Beetle Convertible (1Y7). Tip:

- To avoid injury, hold up the wheel when unscrewing the bolts.

6 Remove the wheel.

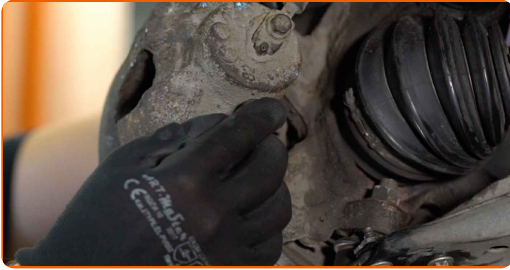


7 Disconnect the ABS sensor electric socket. Disconnect the brake pad wear sensor plug. Remove the ABS sensor connector. Remove the connector of the brake pad wear sensor.

Please note!

- Some cars are not equipped with the brake pad wear sensor.

8 Remove the dust boot caps of the brake caliper guide pins.



9 Spread the brake pads. Use a crowbar.

10 Unscrew the brake caliper fastening. Use HEX No.H7.



11 Remove the brake caliper.

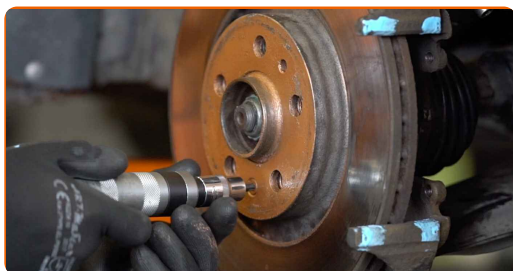


AUTODOC recommends:

- Tie the caliper to the suspension or to the body with a wire without disconnecting from the brake hose to prevent depressurization of the brake system.
- Make sure that the brake caliper is not hanging on the brake hose.
- Don't press the brake pedal after the brake caliper has been removed. As a result, the piston can fall out from the brake cylinder, and brake fluid leakage and depressurization of the system may occur.

12

Unscrew the brake disc mounting bolts and remove it. Use Torx T30.

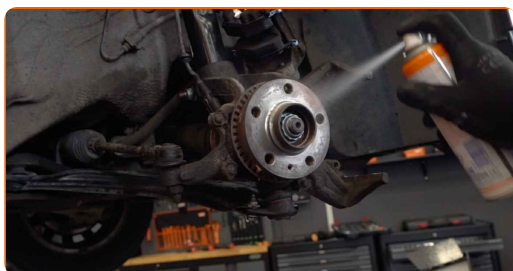


Replacement: brake discs – VW New Beetle Convertible (1Y7). AUTODOC experts recommend:

- If necessary, use a rubber mallet.

13

Clean the hub. Use a wire brush. Use a brake cleaner.



AUTODOC recommends:

- Replacement: brake discs – VW New Beetle Convertible (1Y7). After applying the spray, wait a few minutes.

14

Treat the contacting surface. Use copper grease.

15 Install the new brake disc on the hub and tighten the screws.



16 Tighten the brake disc fastening. Use Torx T30. Use a torque wrench. Tighten it to 4 Nm torque.



17 Remove anti-corrosion grease from the new brake disc. Use a brake cleaner.



Replacement: brake discs – VW New Beetle Convertible (1Y7). Tip from AUTODOC experts:

- After applying the spray, wait a few minutes.
- If necessary, clean the brake caliper mounting seat.

18

Install the brake caliper and fix it. Use HEX No.H7. Use a torque wrench. Tighten it to 28 Nm torque.

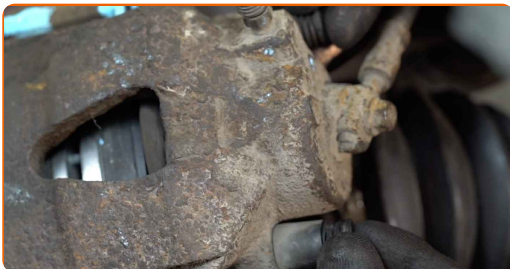


AUTODOC recommends:

- Without starting the engine, press the brake pedal several times until you feel significant resistance.

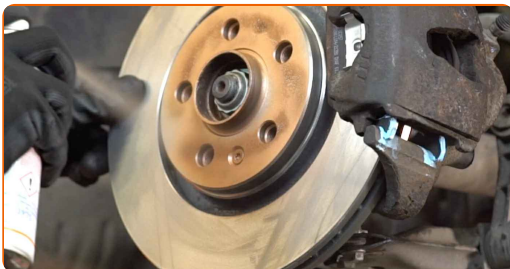
19

Install the dust boot caps of the brake caliper guide pins.



20

Treat the surface where the brake disc contacts the wheel rim. Use copper grease.



21

Install the wheel.



Replacement: brake discs – VW New Beetle Convertible (1Y7). Tip from AUTODOC:

- To avoid injury, hold up the wheel when screwing in the fastening bolts.

22

Screw in the wheel bolts. Use wheel impact socket #17.



23

Lower the car and working in a cross order, tighten the wheel bolts. Use a torque wrench. Tighten it to 120 nm torque.

24

Remove the jacks and chocks.



25

Tighten the brake fluid reservoir cap. Close the hood.



WELL DONE! 

VIEW MORE TUTORIALS

AUTODOC – TOP QUALITY AND AFFORDABLE CAR PARTS ONLINE

AUTODOC MOBILE APP: GREAT DEALS AND CONVENIENT SHOPPING



+ AUTODOC

GET IT ON
Google Play

 Download on the
App Store

Download

A GREAT SELECTION OF SPARE PARTS FOR YOUR CAR

BRAKE DISCS: A WIDE SELECTION

DISCLAIMER:

The document contains only general recommendations that may be useful for you when you perform repair or replacement work. AUTODOC shall not be liable for any loss, injury, damage of property occurring in the repair or replacement process due to incorrect use or misinterpretation of the provided information.

AUTODOC shall not be liable for any possible mistakes and uncertainties in this guide. The information provided is for information purposes only and cannot replace advice from specialists.

AUTODOC shall not be liable for incorrect or hazardous usage of equipment, tools and car parts. AUTODOC strongly recommends to be careful and observe the safety rules when performing repair or replacement works. Remember: usage of low quality auto parts does not guarantee you the appropriate level of road safety.

© Copyright 2023 – All the contents of this website, in particular texts, photographs and graphics, are protected by copyright. All rights, including reproduction, publication, editing and translation rights, are reserved by AUTODOC SE.