



How to change clutch kit
on **VW Lupo / Lupo 3L**
(6X1, 6E1) – replacement
guide

SIMILAR VIDEO TUTORIAL



This video shows the replacement procedure of a similar car part on another vehicle

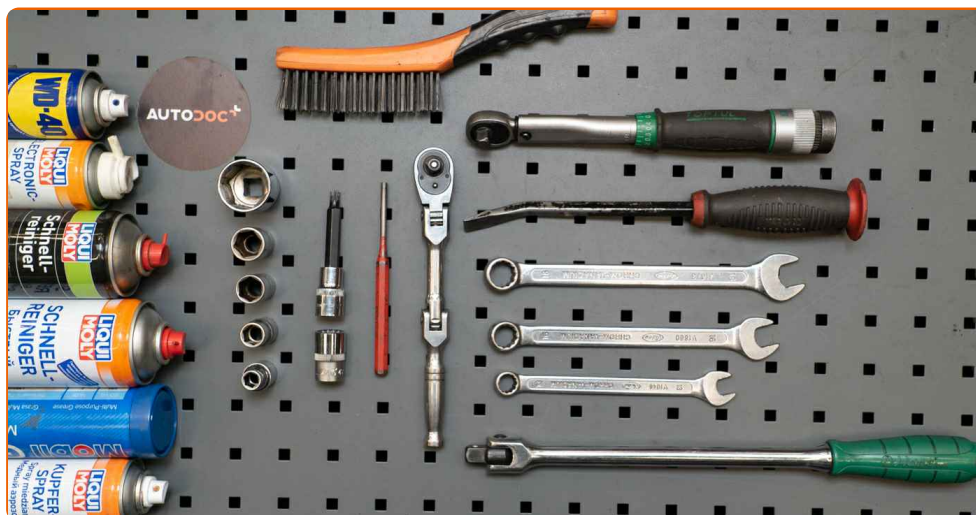
Important!

This replacement procedure can be used for:
VW Lupo / Lupo 3L (6X1, 6E1) 1.0

The steps may slightly vary depending on the car design.

This tutorial was created based on the replacement procedure for a similar car part on: VW Polo III Hatchback (6N1) 1.0

REPLACEMENT: CLUTCH KIT – VW LUPO / LUPO 3L
(6X1, 6E1). TOOLS YOU MIGHT NEED:



- Wire brush
- WD-40 spray
- Electronic spray
- All-purpose cleaning spray
- Brake cleaner
- Multipurpose grease
- Copper grease
- Torque wrench
- Combination spanner #13
- Combination spanner #16
- Drive socket # 10
- Drive socket # 13
- Drive socket # 16
- Drive socket # 18
- Drive socket # 30
- 12-point socket # 9
- XZN socket bit # 8
- Wheel impact socket #17
- Ratchet wrench
- Flat screwdriver
- Pin punch
- Tap wrench
- Crow bar
- Clutch tool kit
- Engine support beam
- Hydraulic transmission jack
- Fender cover
- Wheel chock

Buy tools

Replacement: clutch kit – VW Lupo / Lupo 3L (6X1, 6E1). Tip from AUTODOC:

- Replace the entire clutch kit assembly: the pressure plate, clutch disc, and release bearing.
- Please note: all work on the car – VW Lupo / Lupo 3L (6X1, 6E1) – should be done with the engine switched off.

CARRY OUT REPLACEMENT IN THE FOLLOWING ORDER:

1 Open the bonnet.

2 Use a fender protection cover to prevent damaging paintwork and plastic parts of the car.



3 Unscrew the fasteners of the car battery terminals. Use a drive socket #10. Use a ratchet wrench.



4 Remove the battery terminals.



5 Unscrew the battery fastener. Use a drive socket #13. Use a ratchet wrench.



6 Remove the battery.



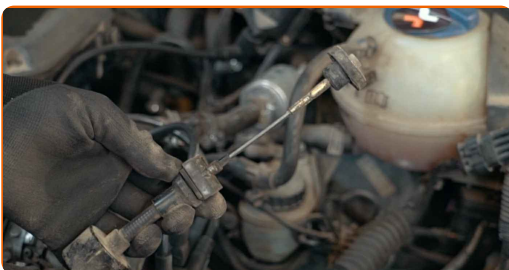
7 Unscrew the fasteners of the battery tray. Use a drive socket #10. Use a ratchet wrench.



8 Remove the battery tray.



9 Disconnect the clutch cable.



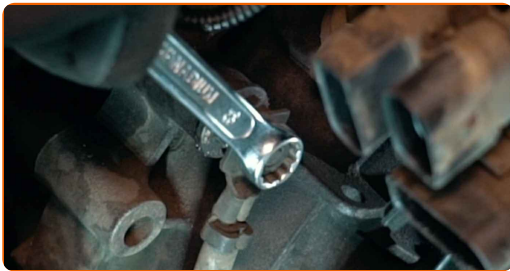
10

Disconnect the engine wiring harness connector.



11

Detach the engine wiring harness.



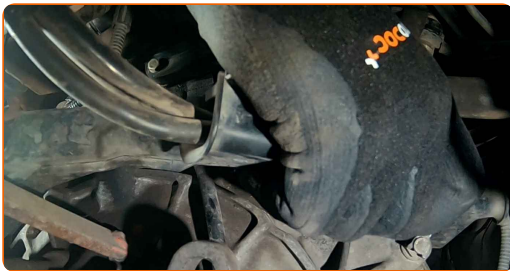
12

Unscrew the ground wire fastener. Use a combination spanner #13.



13

Disconnect the ground wire.



14

Unscrew the engine starter fasteners. Use a drive socket #13. Use a ratchet wrench.



15

Unscrew the fasteners that connect the gearbox to the engine block. Use a drive socket #18. Use a ratchet wrench.



16

Secure the wheels with chocks.

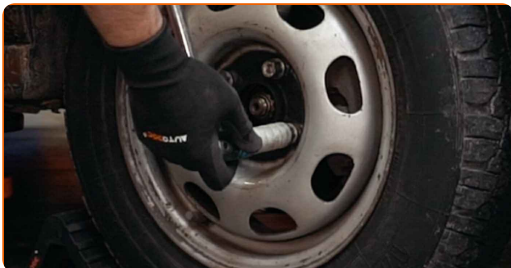
17

Loosen the fastener of the driveshaft. Use a drive socket #30. Use a tap wrench.



18

Loosen the wheel mounting bolts. Use wheel impact socket #17.



19

Raise the front of the car and secure on supports.

20

Unscrew the wheel bolts.



AUTODOC recommends:

- Warning! To avoid injury, hold the wheel while unscrewing the fastening bolts. VW Lupo / Lupo 3L (6X1, 6E1)

21

Remove the wheel.



22

Unscrew the fastener connecting the drive shaft to the wheel hub. Use a drive socket #30. Use a ratchet wrench.



23

Remove the fastening nut.

24

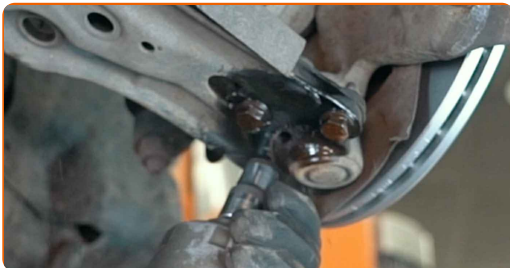
Disconnect the transmission sensor connector.



25 Clean the fasteners connecting the ball joint to the suspension control arm. Use a wire brush. Use WD-40 spray.



26 Unscrew the fastener connecting the ball joint to the suspension control arm. Use a drive socket #13. Use a ratchet wrench.



27 Disconnect the ball joint from the control arm.



28 Detach the driveshaft from the steering knuckle.

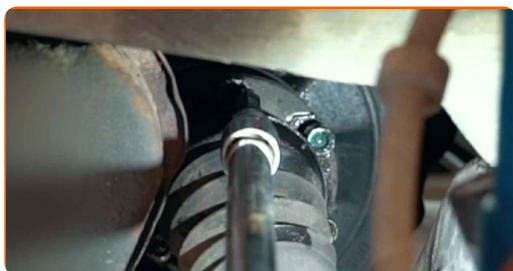


Replacement: clutch kit – VW Lupo / Lupo 3L (6X1, 6E1). Tip:

- Make sure that the drive shaft is not unloaded (when the car is jacked).

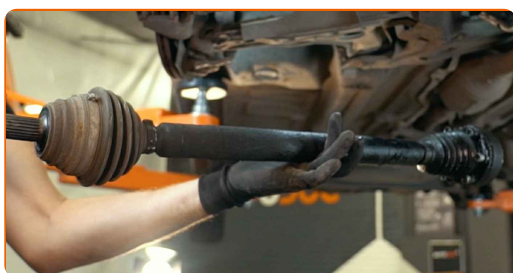
29

Unscrew the fasteners of the CV axle inner joint. Use XZN #8. Use a ratchet wrench.



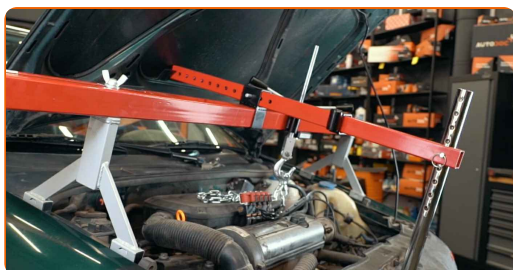
30

Remove the drive shaft.



31

Secure the engine. Use an engine support beam.



32

Unscrew the fastener of the cable bracket. Use a combination spanner #16.



33

Unscrew the gear shift cable fastener. Use a drive socket #13. Use a ratchet wrench.



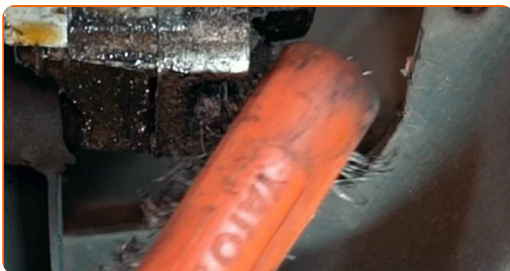
34

Remove the gear shift cable retaining clip. Use a flat screwdriver.



35

Clean the gearbox mount fasteners. Use a wire brush. Use WD-40 spray.



36

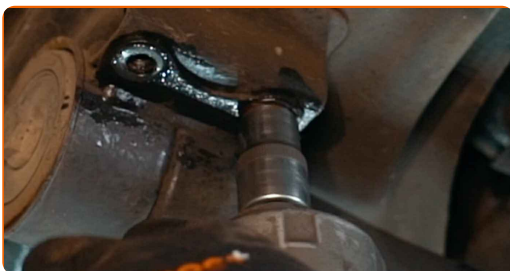
Unscrew the fasteners that connect the bottom gearbox mount to the gearbox. Use a combination spanner #16.



37 Clean the gearbox mount fasteners. Use a wire brush. Use WD-40 spray.



38 Unscrew the fasteners that connect the gearbox mount to the subframe. Use a drive socket #13. Use a ratchet wrench.



39 Remove the gearbox mount.



40 Support the gearbox. Use a hydraulic transmission jack.



Replacement: clutch kit – VW Lupo / Lupo 3L (6X1, 6E1). AUTODOC experts recommend:

- Take care to prevent the gearbox from being unsupported (hanging).

41

Clean the gearbox mount fasteners. Use a wire brush. Use WD-40 spray.



42

Unscrew the gearbox mount fasteners. Use a drive socket #18. Use a ratchet wrench.



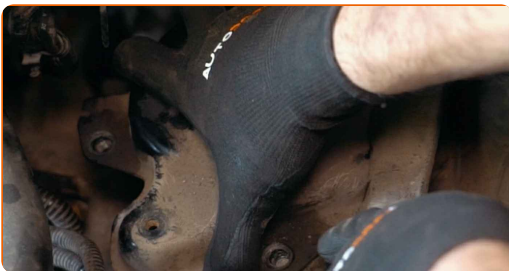
43

Unscrew the fastener that connects the gearbox mount to the car body. Use a drive socket #13. Use a ratchet wrench.

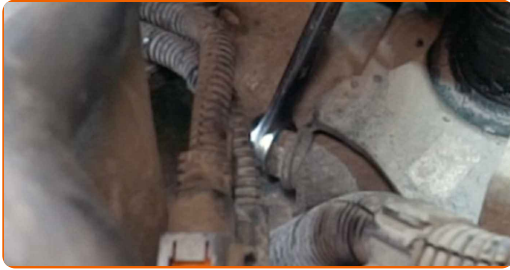


44

Remove the gearbox mount.



45 Unscrew the fasteners that connect the bottom gearbox mount to the gearbox. Use a combination spanner #16.



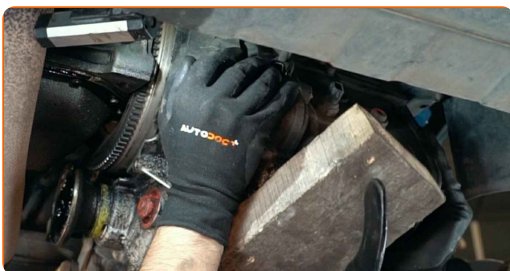
46 Remove the bottom gearbox mount.



47 Unscrew the fasteners that connect the gearbox to the engine block. Use a drive socket #18. Use a ratchet wrench.



48 Move the gearbox aside.



Replacement: clutch kit – VW Lupo / Lupo 3L (6X1, 6E1). Tip from AUTODOC:

- Make sure the gearbox is reliably secured.

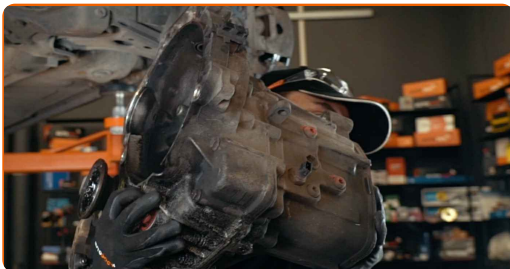
49 Remove the support from under the gearbox.



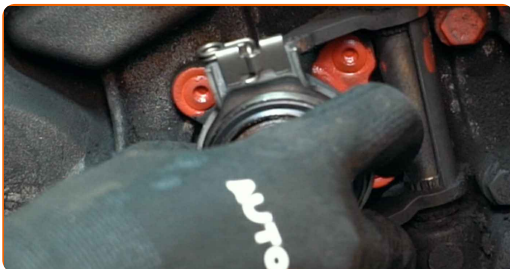
AUTODOC recommends:

- Replacement: clutch kit – VW Lupo / Lupo 3L (6X1, 6E1). Lower the transmission jack smoothly, without jerks, to avoid damaging components and mechanisms.

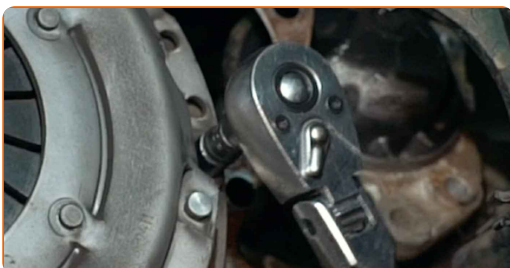
50 Remove the gearbox.



51 Remove the release bearing. Use a crowbar.



52 Unscrew the pressure plate fasteners. Use 12-point socket No.9. Use a ratchet wrench.



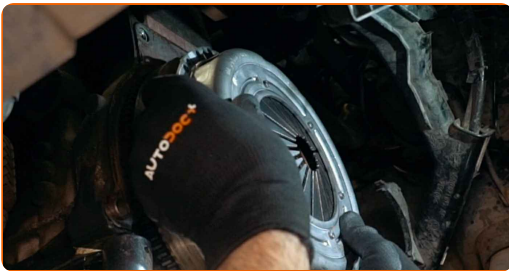
53 Remove the pressure plate together with the clutch disc. Use a crowbar.



54 Clean the clutch kit mounting seats. Use all-purpose cleaning spray.



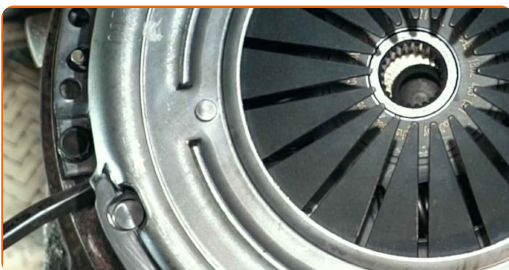
55 Install the new pressure plate together with the clutch disc.



56 Screw in the pressure plate fasteners. Use 12-point socket No.9. Use a ratchet wrench.



57 Align the clutch disc. Use a crowbar.



58 Screw in the pressure plate fasteners. Use 12-point socket No.9. Use a ratchet wrench.



59 Install the engine flywheel locking tool. Use a clutch tool kit.



60 Tighten the pressure plate fasteners. Use 12-point socket No.9. Use a torque wrench. Tighten it to 27 Nm torque.



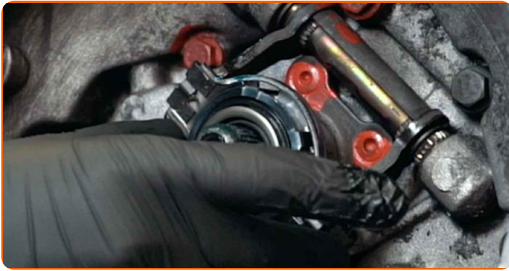
61 Remove the flywheel locking tool.



62 Treat the release bearing mounting seat. Use a multipurpose grease.



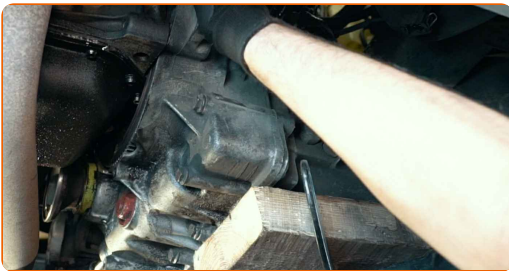
63 Install the new release bearing.



64 Support the gearbox. Use a hydraulic transmission jack.



65 Install the gearbox.



Replacement: clutch kit – VW Lupo / Lupo 3L (6X1, 6E1). Tip from AUTODOC:

- Take care to prevent the gearbox from being unsupported (hanging).

66 Refit the gearbox to its mounting seat.

67 Screw in the fasteners that connect the gearbox to the engine block. Use a drive socket #18. Use a ratchet wrench.



68 Tighten the fasteners that connect the gearbox to the engine block. Use a drive socket #18. Use a torque wrench. Tighten it to 64 Nm torque.



69 Install the lower gearbox mount.



70 Screw in the fasteners that connect the gearbox mount to the gearbox. Use a combination spanner #16.

71 Tighten the fasteners that connect the gearbox mount to the gearbox. Use a combination spanner #16. Use a torque wrench. Tighten it to 64 Nm torque.

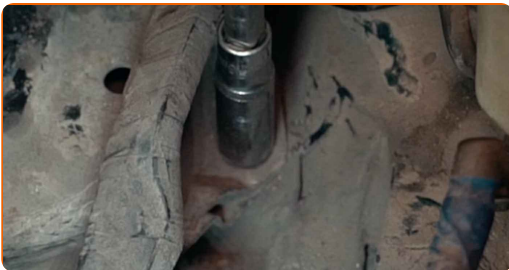
72 Install the gearbox mount.



73 Screw in the fasteners that connect the gearbox mount to the car body. Use a drive socket #18. Use a ratchet wrench.



74 Tighten the fasteners that connect the gearbox mount to the car body. Use a drive socket #13. Use a torque wrench. Tighten it to 38 Nm torque.



75 Tighten the fasteners that connect the gearbox mount to the gearbox. Use a drive socket #18. Use a torque wrench. Tighten it to 69 Nm torque.



76

Remove the support from under the gearbox.



AUTODOC recommends:

- Replacement: clutch kit – VW Lupo / Lupo 3L (6X1, 6E1). Lower the transmission jack smoothly, without jerks, to avoid damaging components and mechanisms.

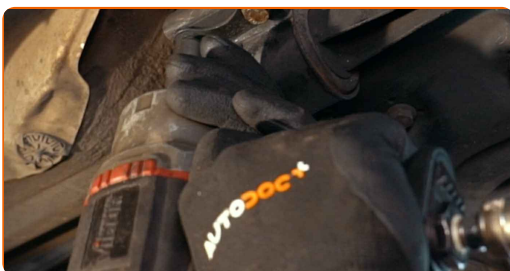
77

Install the gearbox mount.



78

Screw in the fasteners that connect the gearbox mount to the subframe. Use a drive socket #13. Use a ratchet wrench.



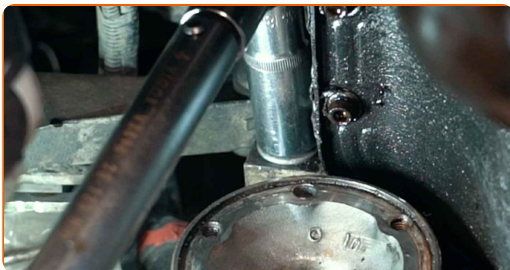
- 79** Tighten the fasteners that connect the gearbox mount to the subframe. Use a drive socket #13. Use a torque wrench. Tighten it to 49 Nm torque.



- 80** Tighten the fasteners that connect the gearbox mount to the gearbox. Use a combination spanner #16. Use a drive socket #16. Use a torque wrench. Tighten it to 75 Nm torque.



- 81** Tighten the fasteners that connect the gearbox to the engine block. Use a drive socket #18. Use a torque wrench. Tighten it to 64 Nm torque.



- 82** Attach the gear shift cable retaining clip.



- 83** Screw in the gear shift cable fastener. Use a drive socket #13. Use a ratchet wrench.

84

Screw in the fastener of the cable bracket. Use a drive socket #16. Use a ratchet wrench.



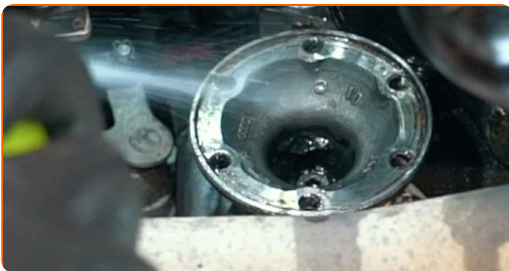
85

Tighten the fastener of the cable bracket. Use a drive socket #16. Use a torque wrench. Tighten it to 22 Nm torque.



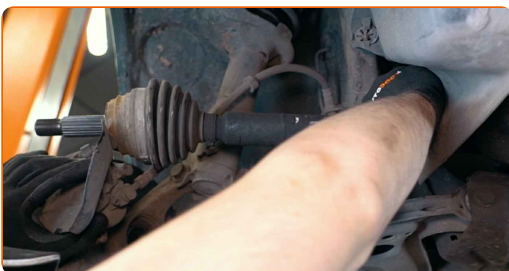
86

Clean the CV joint mounting seat. Use all-purpose cleaning spray.



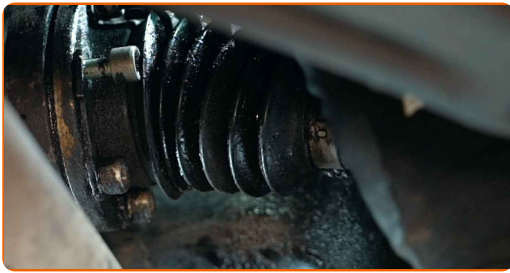
87

Install the drive shaft.



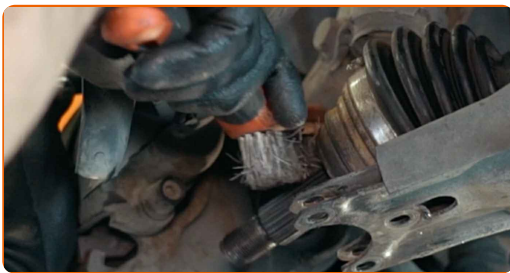
88

Screw in the fasteners of the CV axle inner joint. Use XZN #8. Use a ratchet wrench.



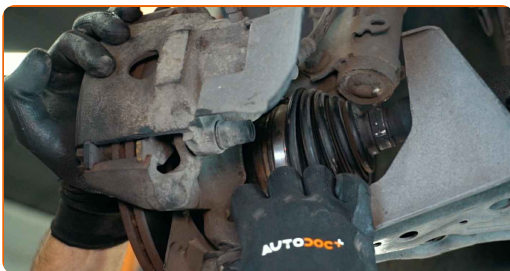
89

Clean the splines of the drive shaft CV joint. Use a wire brush. Use WD-40 spray.



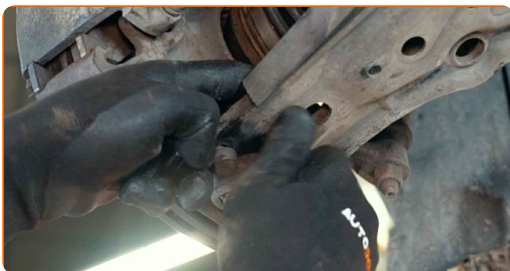
90

Install the steering knuckle on the CV axle.

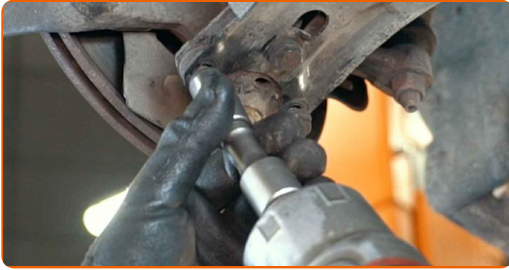


91

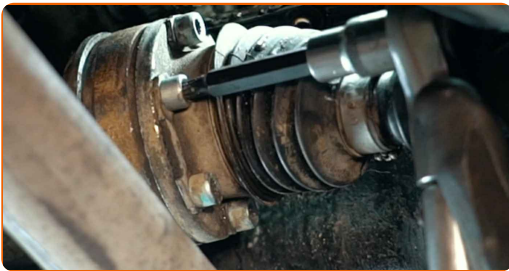
Attach the ball joint to the control arm. Use a pin punch.



92 Screw in the fastener connecting the ball joint to the control arm. Use a drive socket #13. Use a ratchet wrench.



93 Tighten the fasteners of the CV axle inner joint. Use XZN #8. Use a torque wrench. Tighten it to 42 Nm torque.



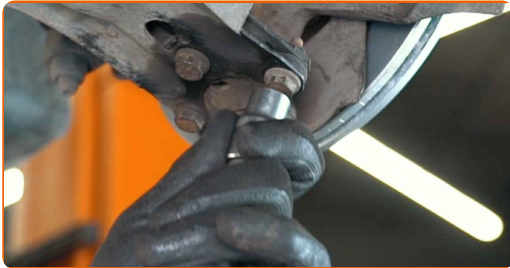
94 Install the fastening nut.



95 Screw in the nut of the CV axle. Use a drive socket #30. Use a ratchet wrench.



- 96 Tighten the fasteners connecting the ball joint to the control arm. Use a drive socket #13. Use a torque wrench. Tighten it to 55 Nm torque.



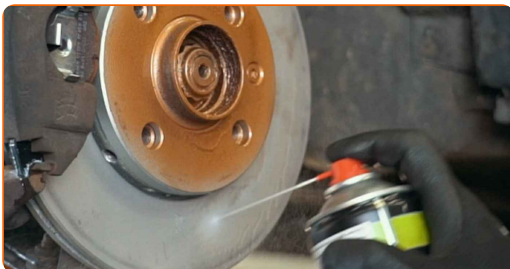
- 97 Attach the transmission sensor connector.



- 98 Treat the surface where the brake disc contacts the wheel rim. Use copper grease.



- 99 Clean the brake disc surface. Use a brake cleaner.



AUTODOC recommends:

- Replacement: clutch kit – VW Lupo / Lupo 3L (6X1, 6E1). After applying the spray, wait a few minutes.

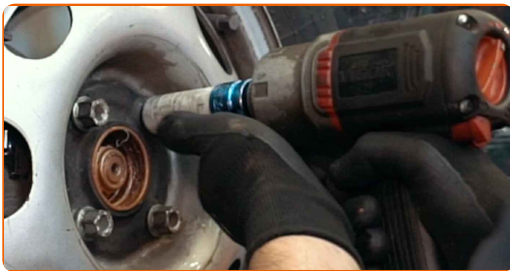
100 Install the wheel.



AUTODOC recommends:

- Important! Hold the wheel while screwing in the fastening bolts. VW Lupo / Lupo 3L (6X1, 6E1)

101 Screw in the wheel bolts. Use wheel impact socket #17.



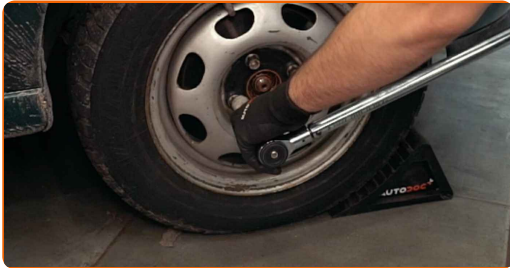
102 Lower the car.

103 Tighten the drive shaft nut. Use a drive socket #30. Use a torque wrench. Tighten it to 175 Nm torque.



104

Tighten the wheel bolts using a criss-cross pattern. Use wheel impact socket #17. Use a torque wrench. Tighten it to 120 Nm torque.



105

Remove the jacks and chocks.

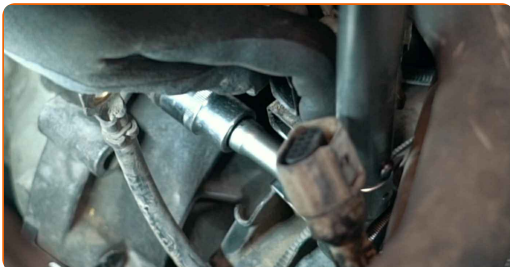
106

Remove the engine support beam.



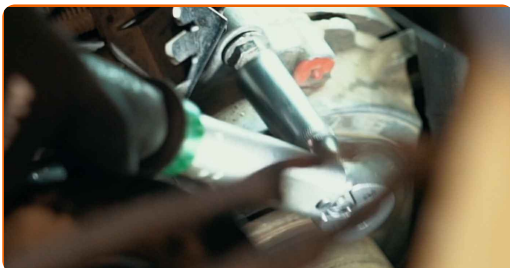
107

Tighten the fasteners that connect the gearbox to the engine block. Use a drive socket #18. Use a torque wrench. Tighten it to 64 Nm torque.



108

Tighten the engine starter fasteners. Use a drive socket #13. Use a torque wrench. Tighten it to 29 Nm torque.



109

Attach the engine wiring harness.

110 Connect the ground wire.



111 Screw on the ground wire fastener. Use a combination spanner #13.



112 Treat the engine wiring harness connectors. Use dielectric grease.



113 Connect the engine wiring harness connector.



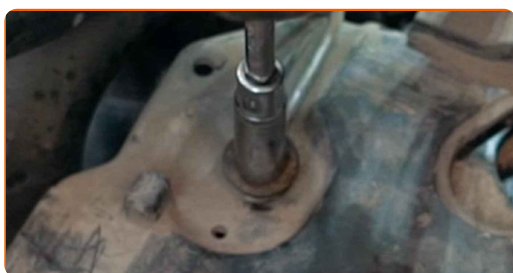
114 Attach the clutch cable.



115 Install the battery tray.



116 Screw in the battery tray fasteners. Use a drive socket #10. Use a ratchet wrench.



117 Install the battery.



118 Screw in the battery fastener. Use a drive socket #13. Use a ratchet wrench.



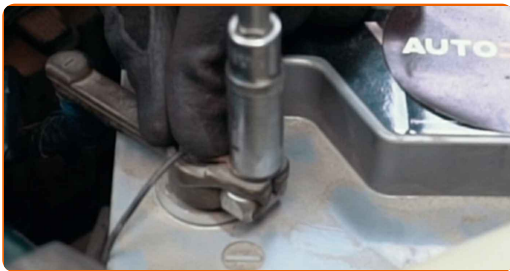
119 Attach the terminals to the battery.



Replacement: clutch kit – VW Lupo / Lupo 3L (6X1, 6E1). Tip from AUTODOC:

- Be careful! Do not mix up the positive and the negative terminals of the car battery.

120 Screw in the fasteners of the battery terminals. Use a drive socket #10. Use a ratchet wrench.



121 Treat the battery terminals. Use dielectric grease.

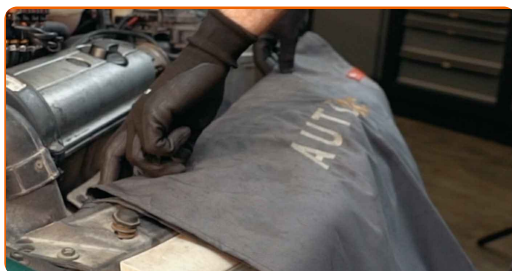


122 Run the engine for a few minutes. This is necessary in order to make sure that the component operates properly.

123 Shut off the engine.

124

Remove the fender protection cover.



125

Close the hood.

WELL DONE! [VIEW MORE TUTORIALS](#)

AUTODOC – TOP QUALITY AND AFFORDABLE CAR PARTS ONLINE

AUTODOC MOBILE APP: GREAT DEALS AND CONVENIENT SHOPPING



AUTODOC

GET IT ON
 **Google Play**

Download on the
 **App Store**

Download

A GREAT SELECTION OF SPARE PARTS FOR YOUR CAR

CLUTCH KIT: A WIDE SELECTION

DISCLAIMER:

The document contains only general recommendations that may be useful for you when you perform repair or replacement work. AUTODOC shall not be liable for any loss, injury, damage of property occurring in the repair or replacement process due to incorrect use or misinterpretation of the provided information.

AUTODOC shall not be liable for any possible mistakes and uncertainties in this guide. The information provided is for information purposes only and cannot replace advice from specialists.

AUTODOC shall not be liable for incorrect or hazardous usage of equipment, tools and car parts. AUTODOC strongly recommends to be careful and observe the safety rules when performing repair or replacement works. Remember: usage of low quality auto parts does not guarantee you the appropriate level of road safety.

© Copyright 2021 – All the contents of this website, in particular texts, photographs and graphics, are protected by copyright. All rights, including reproduction, publication, editing and translation rights, are reserved by AUTODOC GmbH.