



How to change manual  
gearbox oil on **VW LT 40-  
55 I Platform / Chassis  
(293-909)** – replacement  
guide

## SIMILAR VIDEO TUTORIAL



This video shows the replacement procedure of a similar car part on another vehicle

### Important!

This replacement procedure can be used for:

VW LT 40-55 I Platform / Chassis (293-909) 2.4 D, VW LT 40-55 I Platform / Chassis (293-909) 2.4 TD, VW LT 40-55 I Platform / Chassis (293-909) 2.4 i

The steps may slightly vary depending on the car design.

This tutorial was created based on the replacement procedure for a similar car part on: SKODA Fabia I Combi (6Y5) 1.2

REPLACEMENT: MANUAL GEARBOX OIL – VW LT 40-55  
I PLATFORM / CHASSIS (293-909). LIST OF THE TOOLS  
YOU'LL NEED:



- Wire brush
- All-purpose cleaning spray
- HEX bit No.H17.
- Drive socket # 12
- Phillips screwdriver
- Torque wrench
- Funnel
- Oil drain pan
- Fender cover

**Buy tools**

Replacement: manual gearbox oil – VW LT 40-55 I Platform / Chassis (293-909). AUTODOC recommends:

- All work should be done with the engine stopped.

## REPLACEMENT: MANUAL GEARBOX OIL – VW LT 40-55 I PLATFORM / CHASSIS (293-909). RECOMMENDED SEQUENCE OF STEPS:

**1** Open the hood.

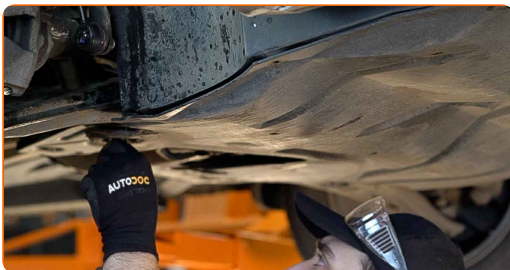
**2** Use a fender protection cover to prevent damaging paintwork and plastic parts of the car.

**3** Lift the car using a jack or place it over an inspection pit.

Replacement: manual gearbox oil – VW LT 40-55 I Platform / Chassis (293-909). Tip:

- The vehicle must be on even keel, and if it is at an angle, the drain plug must be at the lowest point.

**4** Unscrew the fasteners of the lower sound insulation. Use a drive socket #12. Use a Phillips screwdriver.



**5** Remove the lower sound insulation.



**6** Clean the area of the oil pan drainage hole. Use a wire brush. Use all-purpose cleaning spray.



**AUTODOC recommends:**

- Replacement: manual gearbox oil – VW LT 40-55 I Platform / Chassis (293-909).  
After applying the spray, wait a few minutes.

**7** Put a waste oil container with at least 2 l capacity under the drainage hole.



**8** Unscrew the drain plug. Use HEX No.H17.



9

Drain the used oil.



Replacement: manual gearbox oil – VW LT 40-55 I Platform / Chassis (293-909). AUTODOC experts recommend:

- Caution! The oil may be hot.

10

Clean the area around the gearbox housing filler hole. Use a wire brush. Use all-purpose cleaning spray.

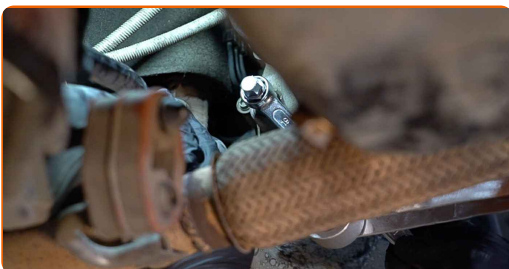


Replacement: manual gearbox oil – VW LT 40-55 I Platform / Chassis (293-909). Tip from AUTODOC:

- After applying the spray, wait a few minutes.

11

Unscrew the filler plug of the gearbox housing. Use HEX No.H17.



**12** Screw in the new drainage plug and tighten it. Use HEX No.H17. Use a torque wrench. Tighten it to 32 Nm torque.



**13** Insert the funnel. Pour the oil into the gearbox through the filler hole. Required amount of oil: 1.5 L.



Replacement: manual gearbox oil – VW LT 40-55 I Platform / Chassis (293-909). Tip from AUTODOC experts:

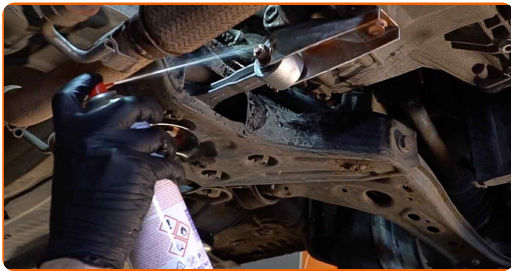
- Use the oil recommended by the manufacturer.

**14** Screw in the filler plug of the gearbox housing. Use HEX No.H17. Use a torque wrench. Tighten it to 32 Nm torque.



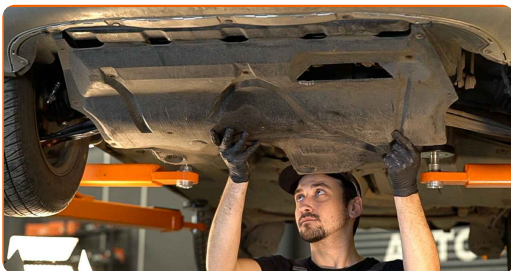
**15**

Clean the area around the gearbox housing filler hole. Use all-purpose cleaning spray.



**16**

Install the lower sound insulation.



**17**

Screw in the fasteners of the lower sound insulation. Use a drive socket #12. Use a Phillips screwdriver.



**18**

Lower the car.

**19**

Remove the fender protection cover.

**20**

Close the hood.

**WELL DONE!** 

**VIEW MORE TUTORIALS**



# AUTODOC – TOP QUALITY AND AFFORDABLE CAR PARTS ONLINE

**AUTODOC MOBILE APP: GREAT DEALS AND CONVENIENT SHOPPING**



**+ AUTODOC**

GET IT ON  
**Google Play**

 Download on the  
**App Store**

**Download**

**A GREAT SELECTION OF SPARE PARTS FOR YOUR CAR**

**MANUAL GEARBOX OIL: A WIDE SELECTION**

## **DISCLAIMER:**

The document contains only general recommendations that may be useful for you when you perform repair or replacement work. AUTODOC shall not be liable for any loss, injury, damage of property occurring in the repair or replacement process due to incorrect use or misinterpretation of the provided information.

AUTODOC shall not be liable for any possible mistakes and uncertainties in this guide. The information provided is for information purposes only and cannot replace advice from specialists.

AUTODOC shall not be liable for incorrect or hazardous usage of equipment, tools and car parts. AUTODOC strongly recommends to be careful and observe the safety rules when performing repair or replacement works. Remember: usage of low quality auto parts does not guarantee you the appropriate level of road safety.

© Copyright 2022 – All the contents of this website, in particular texts, photographs and graphics, are protected by copyright. All rights, including reproduction, publication, editing and translation rights, are reserved by AUTODOC GmbH.