



How to change rear
suspension lower trailing
arm on **VW Jetta Mk6**
(162, 163, AV3, AV2) –
replacement guide

SIMILAR VIDEO TUTORIAL



This video shows the replacement procedure of a similar car part on another vehicle

Important!

This replacement procedure can be used for:

VW Jetta Mk6 (162, 163, AV3, AV2) 1.2 TSI, VW Jetta Mk6 (162, 163, AV3, AV2) 1.6 TDI, VW Jetta Mk6 (162, 163, AV3, AV2) 2.0 TDI, VW Jetta Mk6 (162, 163, AV3, AV2) 1.4 TSI, VW Jetta Mk6 (162, 163, AV3, AV2) 2.0 TSI, VW Jetta Mk6 (162, 163, AV3, AV2) 1.4 TSI Hybrid, VW Jetta Mk6 (162, 163, AV3, AV2) 1.6

The steps may slightly vary depending on the car design.

This tutorial was created based on the replacement procedure for a similar car part on: VW Golf VI Hatchback (5K1) 2.0 GTi

REPLACEMENT: REAR SUSPENSION LOWER TRAILING ARM – VW JETTA MK6 (162, 163, AV3, AV2). LIST OF THE TOOLS YOU'LL NEED:



- Wire brush
- WD-40 spray
- Copper grease
- Drive socket # 15
- Drive socket # 16
- Drive socket # 18
- Combination spanner #16
- XZN socket bit # 6
- Wheel impact socket #17
- Ratchet wrench
- Torque wrench
- Pin punch
- Hammer
- Tap wrench
- Hydraulic transmission jack
- Wheel chock

[Buy tools](#)

Replacement: rear suspension lower trailing arm – VW Jetta Mk6 (162, 163, AV3, AV2). Tip from AUTODOC experts:

- The replacement procedure is identical for the left and right lower control arms.
- All work should be done with the engine stopped.

REPLACEMENT: REAR SUSPENSION LOWER TRAILING ARM – VW JETTA MK6 (162, 163, AV3, AV2). RECOMMENDED SEQUENCE OF STEPS:

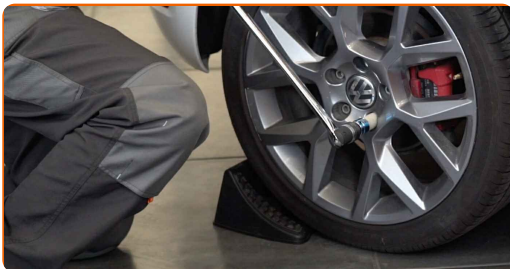
1

Secure the wheels with chocks.



2

Loosen the wheel mounting bolts. Use wheel impact socket #17.



3

Raise the rear of the car and secure on supports.

4

Unscrew the wheel bolts.

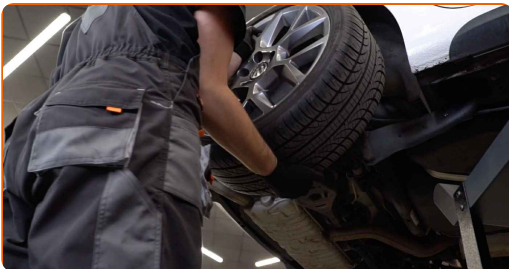


Replacement: rear suspension lower trailing arm – VW Jetta Mk6 (162, 163, AV3, AV2). AUTODOC recommends:

- To avoid injury, hold up the wheel when unscrewing the bolts.

5

Remove the wheel.



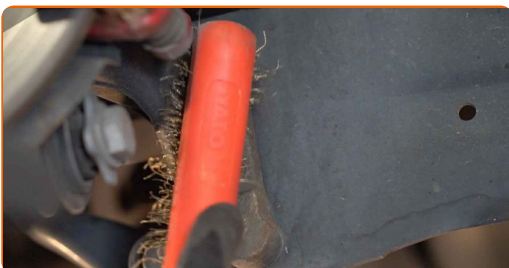
6

Support the arm. Use a hydraulic transmission jack.



7

Clean the control arm fasteners. Use a wire brush. Use WD-40 spray.



- 8 Disconnect the transverse stabilizer fastener from the link. Use a combination spanner #16. Use XZN #6. Use a ratchet wrench.



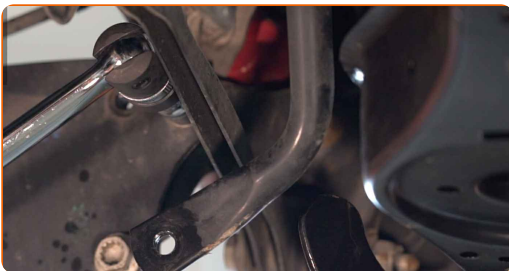
- 9 Remove the retaining clip of the parking brake cable. Use a pin punch. Use a hammer.



- 10 Undo the bracket attaching the parking brake cable to the trailing arm.



- 11 Unscrew the fastener connecting the control arm to the rear knuckle. Use a drive socket #18. Use a tap wrench.



12 Unscrew the fastener connecting the trailing arm to the car body. Use a drive socket #15. Use a ratchet wrench.



13 Remove the arm.



14 Unscrew the bracket fastening to the arm. Use a drive socket #18. Use a ratchet wrench.



15 Remove the bracket from the arm.



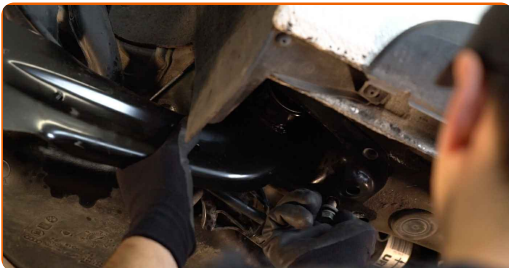
- 16** Fit the new suspension trailing arm into the bracket. Use a drive socket #18. Use a torque wrench. Tighten it to 90 Nm torque.+90°



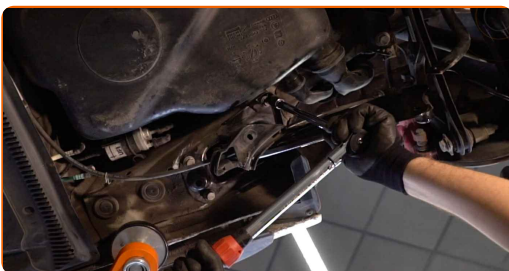
AUTODOC recommends:

- Important! Be sure to use new fasteners.

- 17** Install a new arm.



- 18** Tighten the fastener connecting the trailing arm to the car body. Use a drive socket #15. Use a torque wrench. Tighten it to 50 Nm torque.+45°



AUTODOC recommends:

- Important! Be sure to use new fasteners.

19 Install the control arm fasteners.



20 Tighten the fasteners connecting the control arm to the rear knuckle. Use a drive socket #18. Use a torque wrench. Tighten it to 90 Nm torque. +90°



AUTODOC recommends:

- Important! Be sure to use new fasteners.

21 Install the bracket attaching the parking brake cable to the trailing arm.



22

Secure the parking brake cable with the retaining clip. Use a pin punch. Use a hammer.



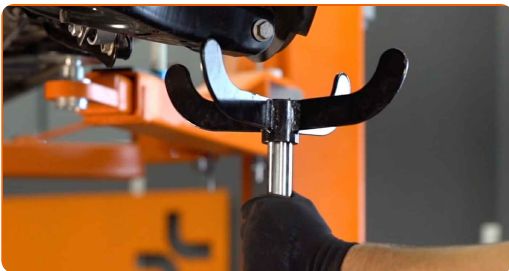
23

Install the rod fastening to the stabilizer and tighten it. Use a combination spanner #16. Use a drive socket #16. Use XZN #6. Use a torque wrench. Tighten it to 45 Nm torque.



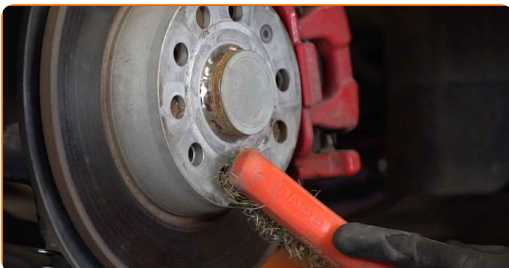
24

Remove the support from under the rear arm.



25

Clean the brake disk surface. Use a wire brush. Treat the surface where the brake disc contacts the wheel rim. Use copper grease.



26

Install the wheel.

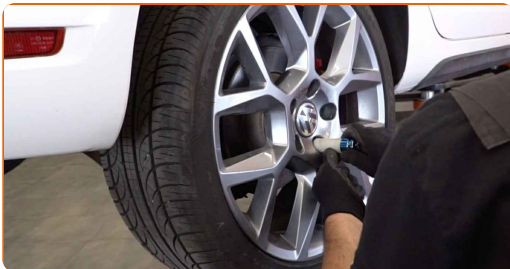


Replacement: rear suspension lower trailing arm – VW Jetta Mk6 (162, 163, AV3, AV2). AUTODOC experts recommend:

- To avoid injury, hold up the wheel when screwing in the fastening bolts.

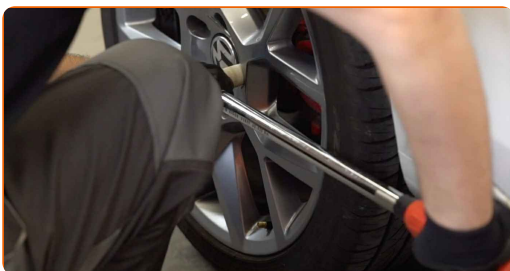
27

Screw in the wheel bolts. Use wheel impact socket #17.



28

Lower the car and working in a cross order, tighten the wheel bolts. Use a torque wrench. Tighten it to 120 Nm torque.



29

Remove the jacks and chocks.



WELL DONE! 

[VIEW MORE TUTORIALS](#)

AUTODOC – TOP QUALITY AND AFFORDABLE CAR PARTS ONLINE

AUTODOC MOBILE APP: GREAT DEALS AND CONVENIENT SHOPPING



AUTODOC

GET IT ON
 **Google Play**

Download on the
 **App Store**

Download

A GREAT SELECTION OF SPARE PARTS FOR YOUR CAR

CONTROL ARM: A WIDE SELECTION

DISCLAIMER:

The document contains only general recommendations that may be useful for you when you perform repair or replacement work. AUTODOC shall not be liable for any loss, injury, damage of property occurring in the repair or replacement process due to incorrect use or misinterpretation of the provided information.

AUTODOC shall not be liable for any possible mistakes and uncertainties in this guide. The information provided is for information purposes only and cannot replace advice from specialists.

AUTODOC shall not be liable for incorrect or hazardous usage of equipment, tools and car parts. AUTODOC strongly recommends to be careful and observe the safety rules when performing repair or replacement works. Remember: usage of low quality auto parts does not guarantee you the appropriate level of road safety.

© Copyright 2021 – All the contents of this website, in particular texts, photographs and graphics, are protected by copyright. All rights, including reproduction, publication, editing and translation rights, are reserved by AUTODOC GmbH.