



How to change water
pump on **VW Jetta Mk1**
(16) – replacement guide

SIMILAR VIDEO TUTORIAL



This video shows the replacement procedure of a similar car part on another vehicle

Important!

This replacement procedure can be used for:

VW Jetta Mk1 (16) 1.6, VW Jetta Mk1 (16) 1.6 GLI, VW Jetta Mk1 (16) 1.8

The steps may slightly vary depending on the car design.

This tutorial was created based on the replacement procedure for a similar car part on: VW GOLF II (19E, 1G1) 1.6

**REPLACEMENT: WATER PUMP – VW JETTA MK1 (16).
TOOLS YOU NEED:**



- Wire brush
- WD-40 spray
- All-purpose cleaning spray
- Sealant
- Torque wrench
- Combination spanner #13
- Drive socket # 7
- Drive socket # 10
- Drive socket # 13
- HEX bit No.H6
- Ratchet wrench
- Seal scraper
- Funnel
- Fluid container
- Fender cover

Buy tools

Replacement: water pump – VW Jetta Mk1 (16). Tip from AUTODOC:

- Follow the terms, recommendations and requirements of the part operation provided by the manufacturer.
- Check the coolant condition and replace it if necessary.
- Inspect the thermostat and the thermostat housing. Replace if necessary.
- Please note: all work on the car – VW Jetta Mk1 (16) – should be done with the engine switched off.

CARRY OUT REPLACEMENT IN THE FOLLOWING ORDER:

1 Open the hood.

2 Use a fender protection cover to prevent damaging paintwork and plastic parts of the car.

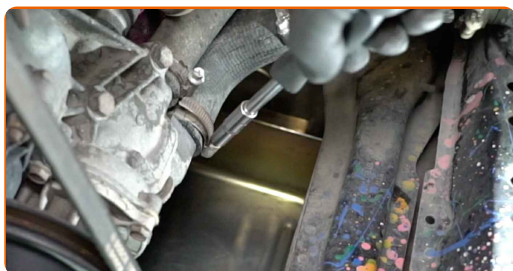
3 Unscrew the coolant reservoir cap.



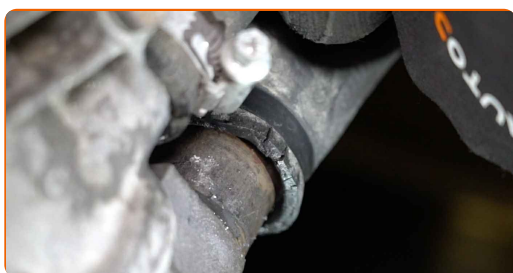
4 Prepare a container for fluids.



5 Loosen the coolant hose clamp. Use a drive socket #7. Use a ratchet wrench.



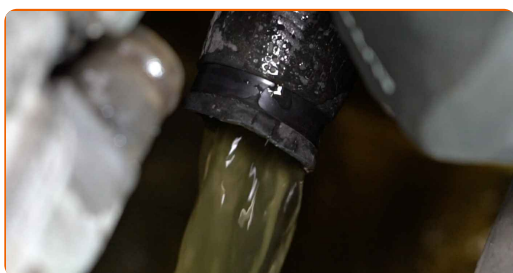
6 Detach the coolant hose.



Replacement: water pump – VW Jetta Mk1 (16). Tip:

- Caution! Coolant may come out from the water pump channels and body.

7 Drain the coolant from the engine.



Replacement: water pump – VW Jetta Mk1 (16). AUTODOC experts recommend:

- Caution! The coolant can be very hot.
- Wear gloves to prevent contact with hot liquid.
- All work should be done with the engine stopped.
- Wait until the coolant has completely flowed out of the drain hole.

8

Unscrew the thermostat housing fasteners. Use a drive socket #13. Use a ratchet wrench.



9

Remove the thermostat housing.



10

Remove the thermostat.



AUTODOC recommends:

- Replacement: water pump – VW Jetta Mk1 (16). Do not use excessive force when removing the part as this may damage it.
- Caution! Coolant may leak out of the coolant lines and thermostat housing.

11

Clean the water pump pulley fastener. Use a wire brush. Use WD-40 spray.



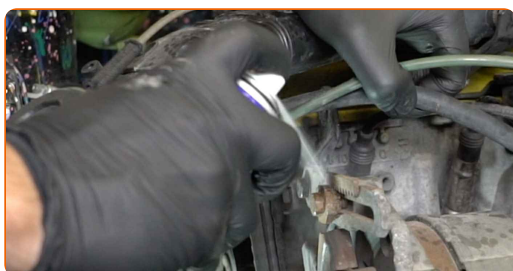
12

Unscrew the water pump pulley fastener. Use HEX No.H6. Use a ratchet wrench.



13

Clean the alternator fasteners. Use a wire brush. Use WD-40 spray.



14 Loosen the alternator fasteners. Use a combination spanner #13.



15 Move the alternator aside.



16 Remove the V belt.



17 Remove the water pump pulley.

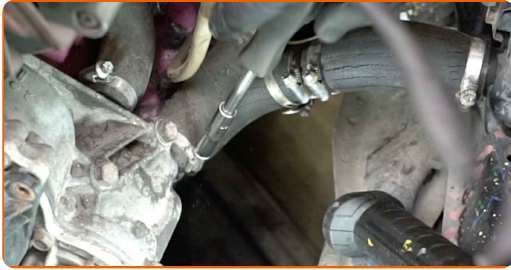


18 Unscrew the fasteners of the water pump housing. Use a drive socket #10. Use a ratchet wrench.



19

Loosen the coolant hose clamp. Use a drive socket #7. Use a ratchet wrench.



20

Detach the coolant hose.

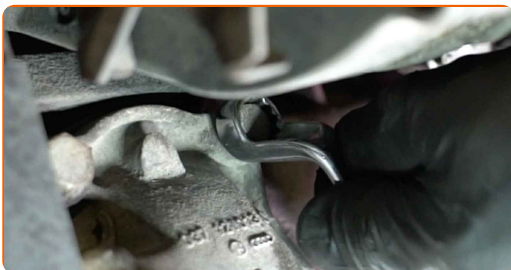


Replacement: water pump – VW Jetta Mk1 (16). Tip from AUTODOC:

- Caution! Coolant may come out from the water pump channels and body.

21

Unscrew the water pump fasteners. Use a combination spanner #13. Use a drive socket #13. Use a ratchet wrench.



22

Remove the water pump.



Replacement: water pump – VW Jetta Mk1 (16). AUTODOC recommends:

- Caution! Coolant may come out from the water pump channels and body.

23

Clean the water pump mounting seat. Use a seal scraper. Use all-purpose cleaning spray.



24

Treat the water pump mounting seat. Use a sealant.



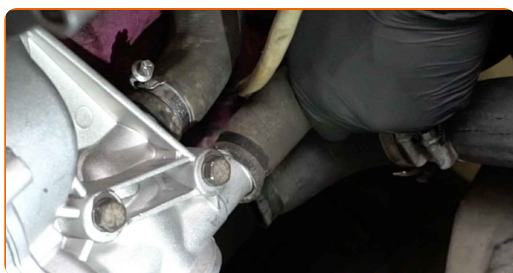
25 Install the new water pump.



26 Tighten the water pump fasteners. Use a combination spanner #13. Use a drive socket #13. Use a torque wrench. Tighten it to 14 nm torque.



27 Attach the coolant hose.



28 Secure the coolant hose clamp. Use a drive socket #7. Use a ratchet wrench.



29 Install the water pump pulley.



30 Install the V belt.



31 Put the alternator back in place.



32 Tighten the alternator fasteners. Use a drive socket #13. Use a torque wrench. Tighten it to 10 nm torque.

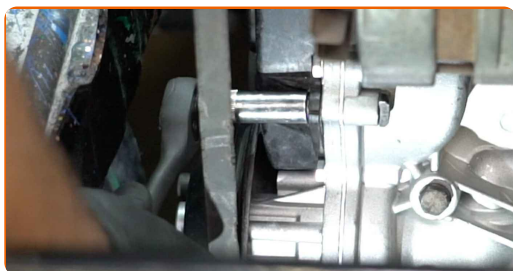


33 Tighten the water pump pulley fastener. Use HEX No.H6. Use a torque wrench. Tighten it to 9 nm torque.



34

Screw in the fasteners of the water pump housing. Use a drive socket #10. Use a ratchet wrench.



35

Install the thermostat.



AUTODOC recommends:

- Replacement: water pump – VW Jetta Mk1 (16). Do not use excessive force during installation. This may damage the part.

36

Install the thermostat housing.



- 37 Tighten the thermostat housing fasteners. Use a drive socket #10. Use a torque wrench. Tighten it to 13 nm torque.



- 38 Attach the coolant hose.



- 39 Secure the coolant hose clamp. Use a drive socket #7. Use a ratchet wrench.

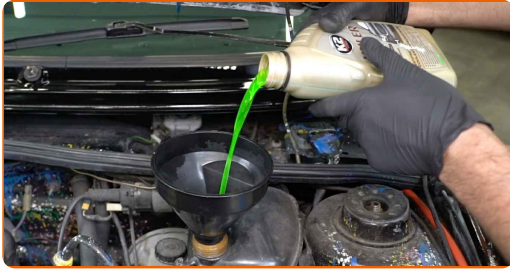


- 40 Remove the coolant reservoir cap.

- 41 Insert the funnel.



42 Pour coolant in the coolant reservoir.



Replacement: water pump – VW Jetta Mk1 (16). Professionals recommend:

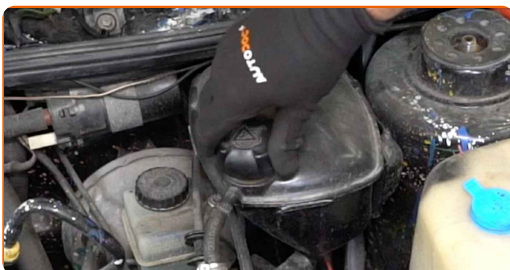
- Only use the coolant recommended by the manufacturer.
- The coolant level should be at the MAX mark.
- Wait until the air goes out of the system.

43 Run the engine for a few minutes. This should be done in order to remove residual air from the cooling system and to check if the components are operating correctly.

44 Shut off the engine.

45 Install the coolant reservoir cap.

46 Screw on the coolant reservoir cap.



47 Remove the fender protection cover.

48

Close the hood.

WELL DONE! 

VIEW MORE TUTORIALS

AUTODOC – TOP QUALITY AND AFFORDABLE CAR PARTS ONLINE

AUTODOC MOBILE APP: GREAT DEALS AND CONVENIENT SHOPPING



+ AUTODOC

GET IT ON
Google Play

Download on the
App Store

Download

A GREAT SELECTION OF SPARE PARTS FOR YOUR CAR

WATER PUMP: A WIDE SELECTION

DISCLAIMER:

The document contains only general recommendations that may be useful for you when you perform repair or replacement work. AUTODOC shall not be liable for any loss, injury, damage of property occurring in the repair or replacement process due to incorrect use or misinterpretation of the provided information.

AUTODOC shall not be liable for any possible mistakes and uncertainties in this guide. The information provided is for information purposes only and cannot replace advice from specialists.

AUTODOC shall not be liable for incorrect or hazardous usage of equipment, tools and car parts. AUTODOC strongly recommends to be careful and observe the safety rules when performing repair or replacement works. Remember: usage of low quality auto parts does not guarantee you the appropriate level of road safety.

© Copyright 2022 – All the contents of this website, in particular texts, photographs and graphics, are protected by copyright. All rights, including reproduction, publication, editing and translation rights, are reserved by AUTODOC GmbH.