



How to change front
window regulator on **VW**
Golf III Estate (1H5) –
replacement guide

SIMILAR VIDEO TUTORIAL



This video shows the replacement procedure of a similar car part on another vehicle

Important!

This replacement procedure can be used for:

VW Golf III Estate (1H5) 1.9 D, VW Golf III Estate (1H5) 1.9 TD, VW Golf III Estate (1H5) 1.4, VW Golf III Estate (1H5) 1.8, VW Golf III Estate (1H5) 2.0, VW Golf III Estate (1H5) 1.9 TDI, VW Golf III Estate (1H5) 1.6, VW Golf III Estate (1H5) 1.9 SDI

The steps may slightly vary depending on the car design.

This tutorial was created based on the replacement procedure for a similar car part on: VW Golf III Hatchback (1H1) 1.9 D

REPLACEMENT: WINDOW REGULATOR – VW GOLF III
ESTATE (1H5). TOOLS YOU'LL NEED:



- Torque wrench
- Drive socket # 10
- Ratchet wrench
- Phillips screwdriver
- Plastic trim tool

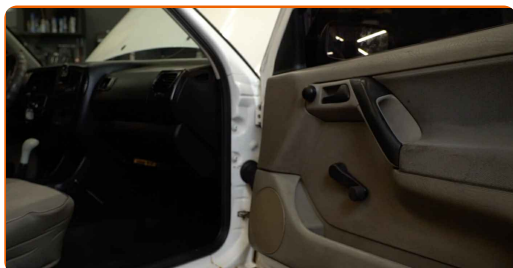
Buy tools

Replacement: window regulator – VW Golf III Estate (1H5). AUTODOC recommends:

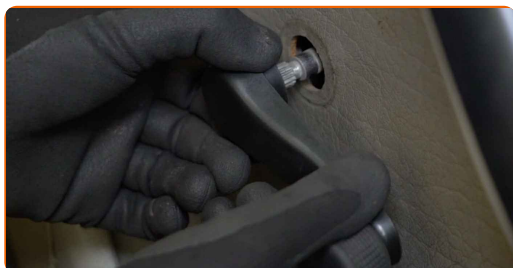
- All work should be done with the engine stopped.

REPLACEMENT: WINDOW REGULATOR – VW GOLF III ESTATE (1H5). RECOMMENDED SEQUENCE OF STEPS:

- 1 Open the car door.



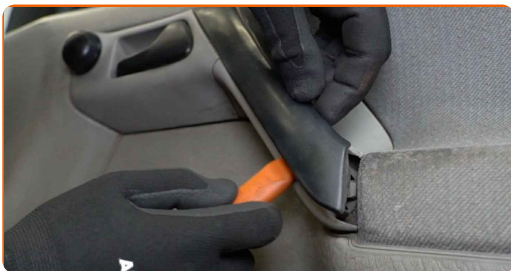
- 2 Detach the window regulator handle.



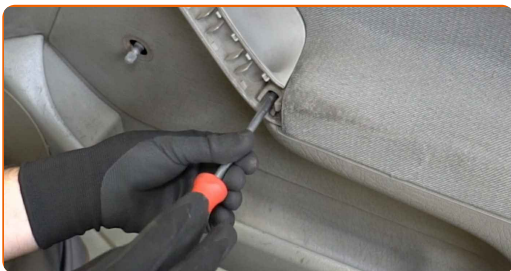
AUTODOC recommends:

- Replacement: window regulator – VW Golf III Estate (1H5). Do not use excessive force when removing the part as this may damage it.

3 Detach the door handle trim panel. Use a plastic trim tool.



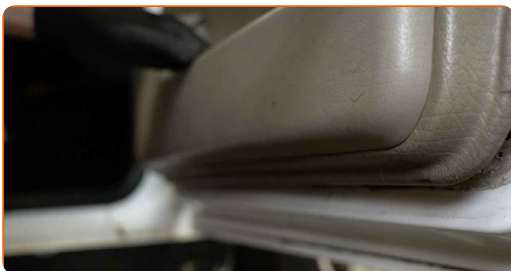
4 Unscrew the door handle fastener. Use a Phillips screwdriver.



5 Detach the wing mirror adjustment handle.



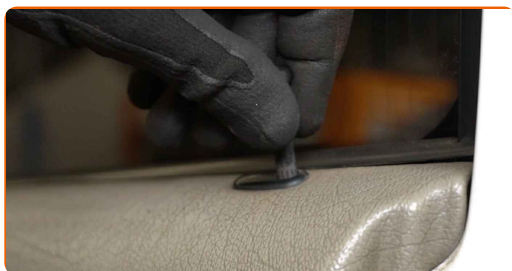
6 Detach the door card. Use a plastic trim tool.



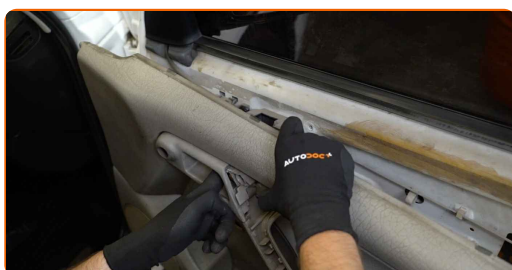
Replacement: window regulator – VW Golf III Estate (1H5). Tip:

- Do not apply excessive force when removing the part. Otherwise you may damage it.

7 Detach the central lock button.



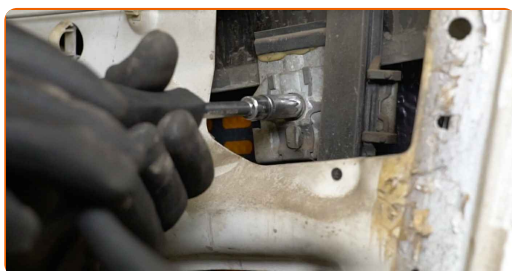
8 Remove the door card.



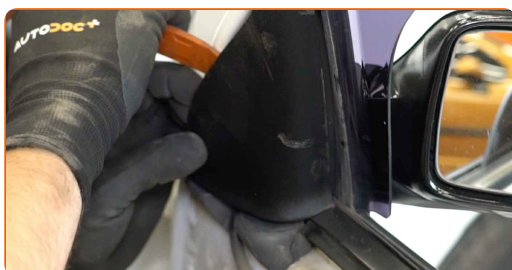
AUTODOC recommends:

- Replacement: window regulator – VW Golf III Estate (1H5). To avoid damaging the part during installation, do not use excessive force.

9 Unscrew the window glass fasteners. Use a drive socket #10. Use a ratchet wrench.



10 Detach the side mirror trim panel.



11

Raise the glass a little and remove it.

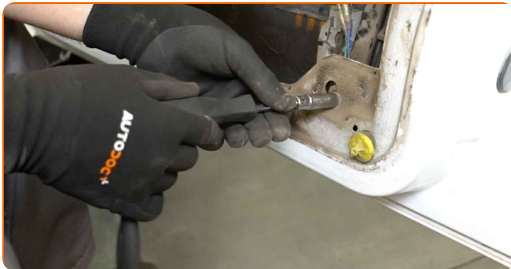


Replacement: window regulator – VW Golf III Estate (1H5). Professionals recommend:

- To avoid injury, hold the glass when raising it.
- Do not apply excessive force when removing the part. Otherwise you may damage it.

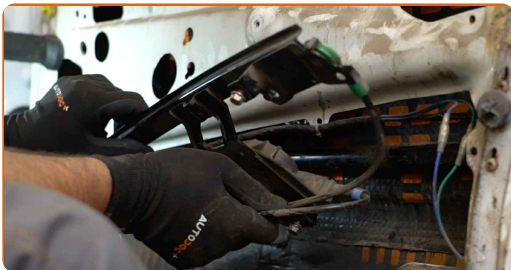
12

Unscrew the fasteners of the window regulator assembly. Use a drive socket #10. Use a ratchet wrench.

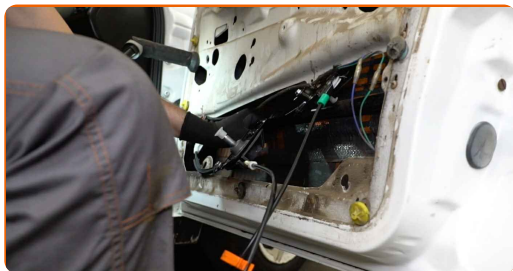


13

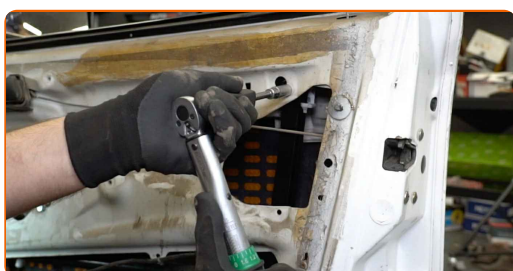
Remove the window regulator mechanism.



14 Install the new window regulator mechanism.



15 Tighten the fasteners of the window regulator assembly. Use a drive socket #10. Use a torque wrench. Tighten it to 10 Nm torque.



16 Attach the window regulator handle.



17 Set the window regulator assembly into the fully lowered position.



18 Lower the window glass and install it to its mounting seat in the window raiser mechanism.



Replacement: window regulator – VW Golf III Estate (1H5). AUTODOC experts recommend:

- To avoid injury, hold the glass when lowering it.
- When installing, do not use excessive force to avoid damage to the part.

19 Tighten the window glass fasteners. Use a drive socket #10. Use a torque wrench. Tighten it to 10 Nm torque.

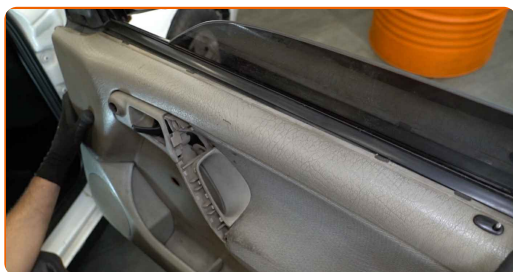


20 Check if the window regulator assembly works correctly.



21 Detach the window regulator handle.

22 Reinstall the door card. Make sure you hear a click indicating that it is locked in place.

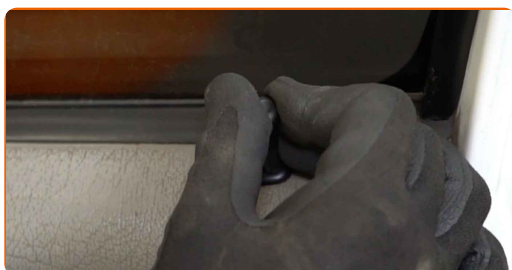


AUTODOC recommends:

- Replacement: window regulator – VW Golf III Estate (1H5). Do not use excessive force during installation. This may damage the part.

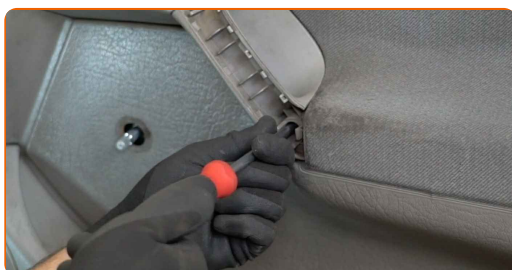
23

Attach the central lock button.



24

Screw in the door handle fastener. Use a Phillips screwdriver.



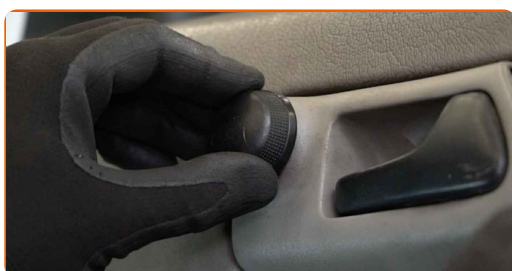
25

Attach the side mirror trim panel.



26

Attach the wing mirror adjustment handle.



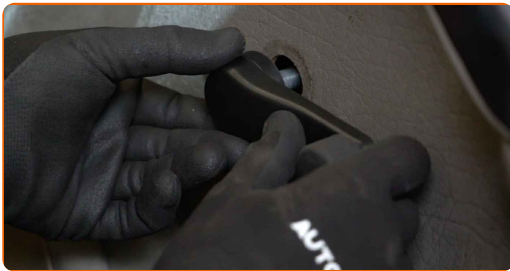
27

Attach the door handle trim panel.



28

Attach the window regulator handle.



29

Close the car door.

WELL DONE! 

VIEW MORE TUTORIALS

AUTODOC – TOP QUALITY AND AFFORDABLE CAR PARTS ONLINE

AUTODOC MOBILE APP: GREAT DEALS AND CONVENIENT SHOPPING



+ AUTODOC

GET IT ON
Google Play

 Download on the
App Store

Download

A GREAT SELECTION OF SPARE PARTS FOR YOUR CAR

WINDOW REGULATOR: A WIDE SELECTION

DISCLAIMER:

The document contains only general recommendations that may be useful for you when you perform repair or replacement work. AUTODOC shall not be liable for any loss, injury, damage of property occurring in the repair or replacement process due to incorrect use or misinterpretation of the provided information.

AUTODOC shall not be liable for any possible mistakes and uncertainties in this guide. The information provided is for information purposes only and cannot replace advice from specialists.

AUTODOC shall not be liable for incorrect or hazardous usage of equipment, tools and car parts. AUTODOC strongly recommends to be careful and observe the safety rules when performing repair or replacement works. Remember: usage of low quality auto parts does not guarantee you the appropriate level of road safety.

© Copyright 2022 – All the contents of this website, in particular texts, photographs and graphics, are protected by copyright. All rights, including reproduction, publication, editing and translation rights, are reserved by AUTODOC GmbH.