



How to change front
brake hose on **VW Bora**
Variant (1J6) –
replacement guide

SIMILAR VIDEO TUTORIAL



This video shows the replacement procedure of a similar car part on another vehicle

Important!

This replacement procedure can be used for:

VW Bora Variant (1J6) 2.0, VW Bora Variant (1J6) 2.3 V5, VW Bora Variant (1J6) 1.9 TDI, VW Bora Variant (1J6) 1.6, VW Bora Variant (1J6) 1.6 16V, VW Bora Variant (1J6) 1.8 T, VW Bora Variant (1J6) 1.6 FSI, VW Bora Variant (1J6) 1.4 16V

The steps may slightly vary depending on the car design.

This tutorial was created based on the replacement procedure for a similar car part on: VW Golf IV Hatchback (1J1) 1.6

REPLACEMENT: BRAKE HOSE – VW BORA VARIANT (1J6). TOOLS YOU MIGHT NEED:



- Wire brush
- Brake cleaner
- Copper grease
- Torque wrench
- Combination spanner #10
- Combination spanner #11
- Drive socket # 10
- Drive socket # 11
- Wheel impact socket #17
- Brake hose clip
- Brake bleeder kit
- Fluid container
- Hammer
- Crow bar
- Fender cover
- Wheel chock

Buy tools

Replacement: brake hose – VW Bora Variant (1J6). AUTODOC experts recommend:

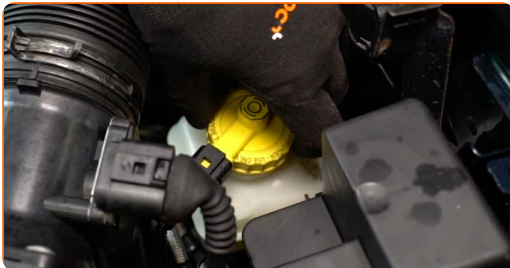
- Follow the terms, recommendations and requirements of the part operation provided by the manufacturer.
- The replacement procedure is identical for the right and left brake hoses on the same axle.
- All work should be done with the engine stopped.

**REPLACEMENT: BRAKE HOSE – VW BORA VARIANT (1J6).
RECOMMENDED SEQUENCE OF STEPS:**

1 Open the bonnet.

2 Use a fender protection cover to prevent damaging paintwork and plastic parts of the car.

3 Unscrew the brake fluid reservoir cap.



4 Secure the wheels with chocks.

5 Loosen the wheel mounting bolts. Use wheel impact socket #17.



6 Raise the front of the car and secure on supports.

7 Unscrew the wheel bolts.



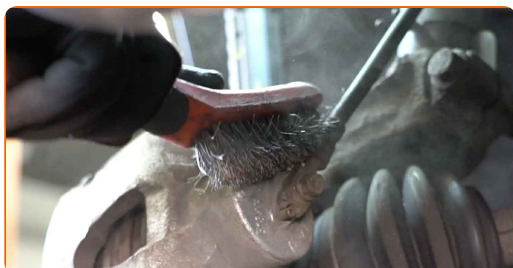
AUTODOC recommends:

- Warning! To avoid injury, hold the wheel while unscrewing the fastening bolts. VW Bora Variant (1J6)

8 Remove the wheel.



9 Clean the area where the brake hose is connected to the brake caliper and to the brake circuit pipe. Use a wire brush. Use a brake cleaner.

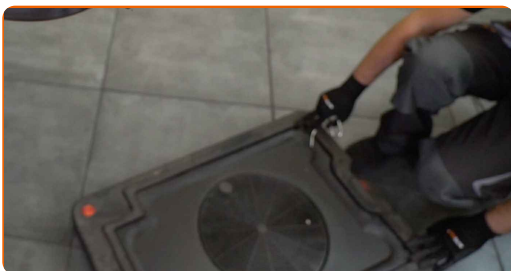


AUTODOC recommends:

- Replacement: brake hose – VW Bora Variant (1J6). After applying the spray, wait a few minutes.

10

Put a container for gathering brake fluid beneath.



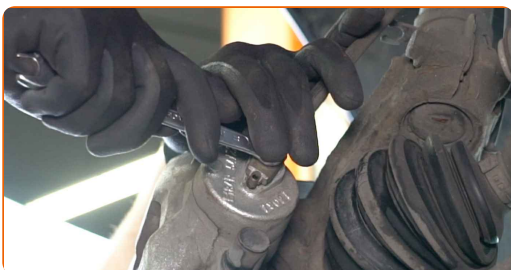
11

Clamp the brake hose off using a brake hose clamp.



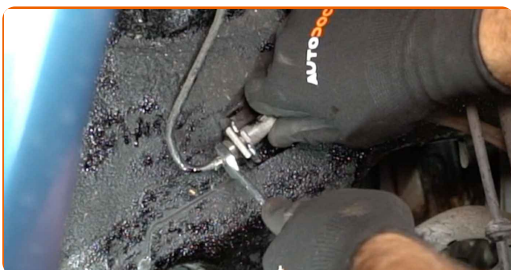
12

Loosen the brake hose fastening. Use a combination spanner #11.

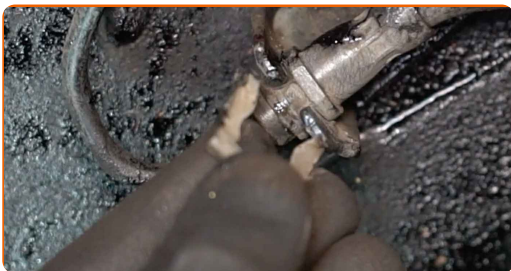


13

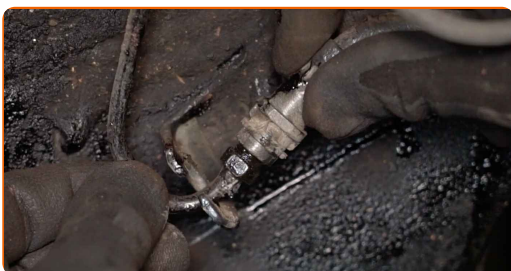
Loosen the fastener connecting the brake pipe to the brake hose. Use a combination spanner #11.



14 Remove the brake hose retaining clip. Use a crowbar.

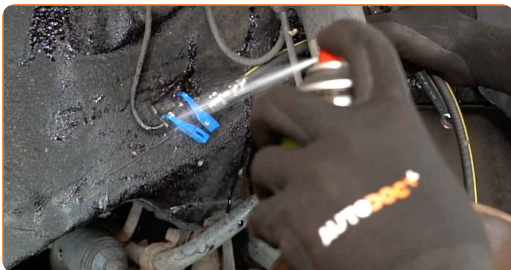


15 Disconnect the brake hose.



16 Remove the brake hose clamp.

17 Clean the brake hose mounting seat. Use a brake cleaner.



Replacement: brake hose – VW Bora Variant (1J6). Tip from AUTODOC:

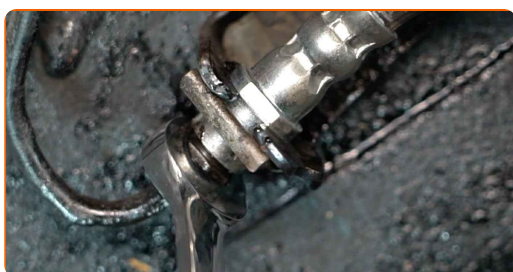
- After applying the spray, wait a few minutes.

18 Clamp the brake hose off using a brake hose clamp.



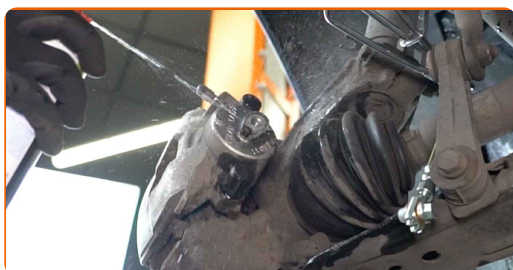
19 Attach the new brake hose.

20 Screw the brake hose onto the brake circuit pipe. Use a combination spanner #11.



21 Install the brake hose retaining clip. Use a hammer.

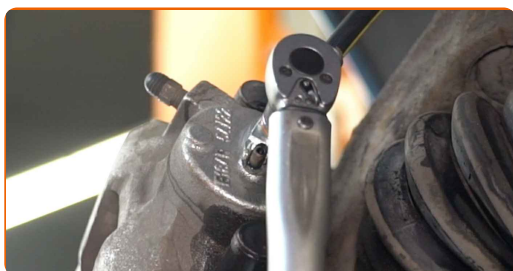
22 Clean the brake hose mounting seat. Use a brake cleaner.



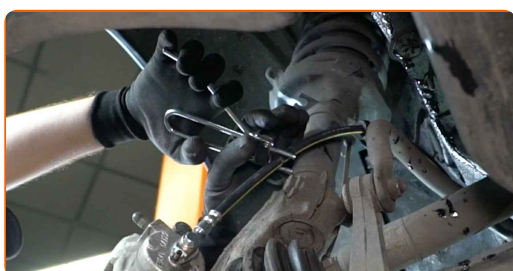
AUTODOC recommends:

- Replacement: brake hose – VW Bora Variant (1J6). After applying the spray, wait a few minutes.

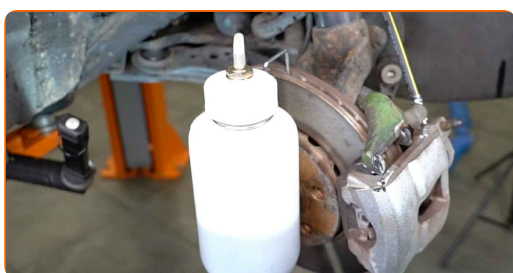
- 23** Tighten the fastener connecting the brake pipe to the brake caliper. Use a drive socket #11. Use a torque wrench. Tighten it to 30 Nm torque.



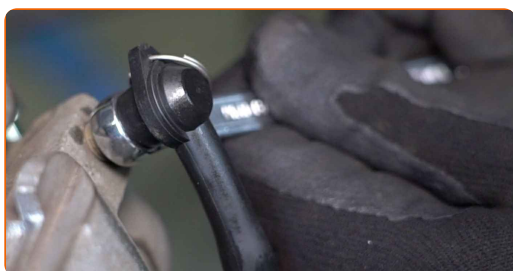
- 24** Remove the brake hose clamp.



- 25** Connect the brake bleeder kit to the brake bleeder screw.



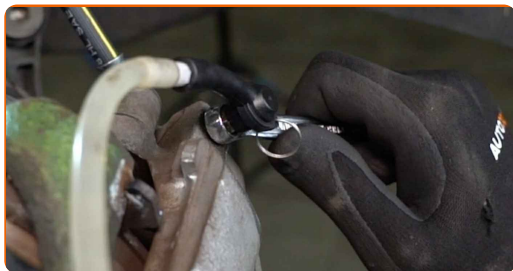
- 26** Undo the brake bleeder screw. Use a combination spanner #10.



- 27** Press the brake pedal several times to remove any air from the system.



28 Tighten the brake bleeder screw. Use a combination spanner #10.



29 Disconnect the brake bleeder kit.



30 Clean dirt from the brake hose bolt. Use a brake cleaner.



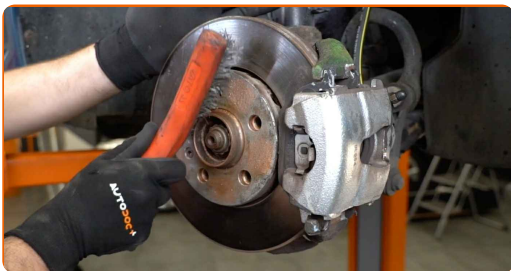
AUTODOC recommends:

- Replacement: brake hose – VW Bora Variant (1J6). After applying the spray, wait a few minutes.

31 Tighten the brake caliper bleed screw. Use a drive socket #10. Use a torque wrench. Tighten it to 8 Nm torque.



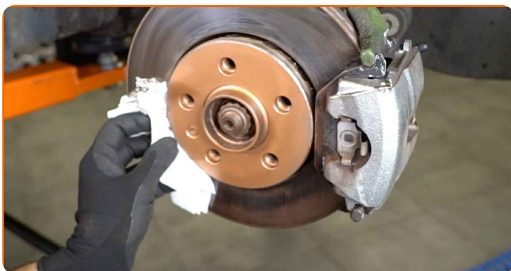
32 Clean the wheel rim mounting seat. Use a wire brush.



33 Treat the surface where the brake disc contacts the wheel rim. Use copper grease.



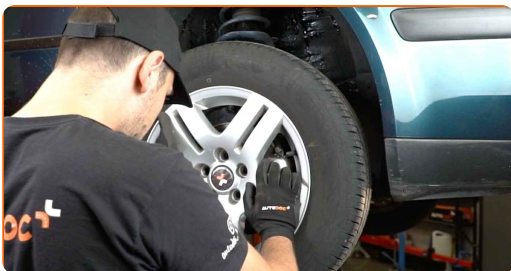
34 Clean the brake disk surface. Use a brake cleaner.



Replacement: brake hose – VW Bora Variant (1J6). Professionals recommend:

- After applying the spray, wait a few minutes.

35 Install the wheel.



AUTODOC recommends:

- Warning! To avoid injury, hold the wheel while screwing in the fastening bolts on the car. VW Bora Variant (1J6)

36

Screw in the wheel bolts. Use wheel impact socket #17.



37

Lower the car and working in a cross order, tighten the wheel bolts. Use wheel impact socket #17. Use a torque wrench. Tighten it to 120 nm torque.



38

Remove the jacks and chocks.



AUTODOC recommends:

- Check the brake fluid level in the expansion tank and refill if necessary.

39 Tighten the brake fluid reservoir cap.



40 Remove the fender protection cover.

41 Close the hood.

WELL DONE! 

VIEW MORE TUTORIALS

AUTODOC – TOP QUALITY AND AFFORDABLE CAR PARTS ONLINE

AUTODOC MOBILE APP: GREAT DEALS AND CONVENIENT SHOPPING



A GREAT SELECTION OF SPARE PARTS FOR YOUR CAR

BRAKE HOSE: A WIDE SELECTION

DISCLAIMER:

The document contains only general recommendations that may be useful for you when you perform repair or replacement work. AUTODOC shall not be liable for any loss, injury, damage of property occurring in the repair or replacement process due to incorrect use or misinterpretation of the provided information.

AUTODOC shall not be liable for any possible mistakes and uncertainties in this guide. The information provided is for information purposes only and cannot replace advice from specialists.

AUTODOC shall not be liable for incorrect or hazardous usage of equipment, tools and car parts. AUTODOC strongly recommends to be careful and observe the safety rules when performing repair or replacement works. Remember: usage of low quality auto parts does not guarantee you the appropriate level of road safety.

© Copyright 2023 – All the contents of this website, in particular texts, photographs and graphics, are protected by copyright. All rights, including reproduction, publication, editing and translation rights, are reserved by AUTODOC SE.