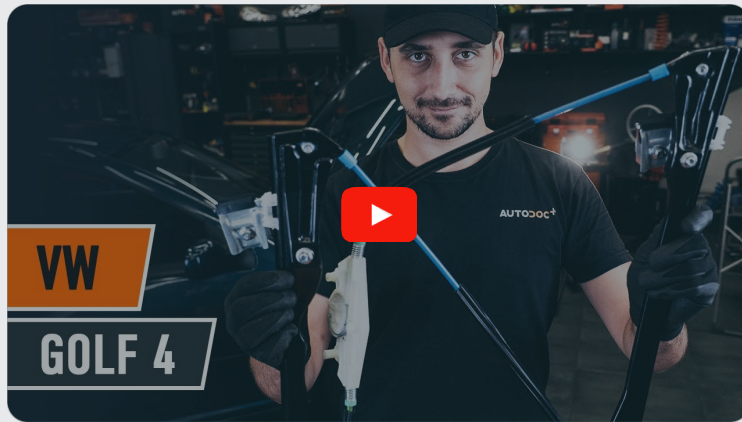




How to change front  
window regulator on **VW**  
**Bora Saloon (1J2)** –  
replacement guide

### SIMILAR VIDEO TUTORIAL



This video shows the replacement procedure of a similar car part on another vehicle

#### **Important!**

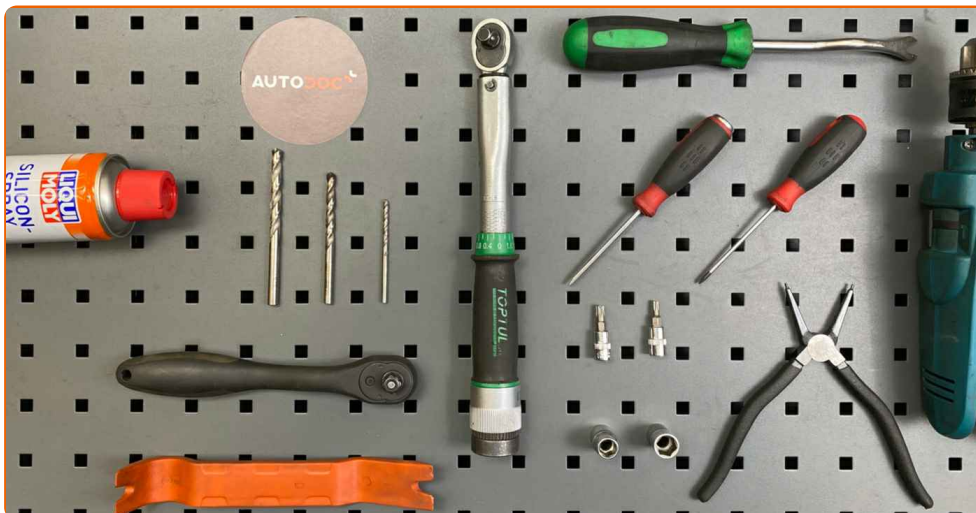
This replacement procedure can be used for:

VW Bora Saloon (1J2) 1.6, VW Bora Saloon (1J2) 2.0, VW Bora Saloon (1J2) 2.3 V5, VW Bora Saloon (1J2) 1.9 TDI, VW Bora Saloon (1J2) 1.8, VW Bora Saloon (1J2) 1.4 16V, VW Bora Saloon (1J2) 1.9 SDI, VW Bora Saloon (1J2) 2.8 V6 4motion, VW Bora Saloon (1J2) 1.8 4motion, VW Bora Saloon (1J2) 2.3 V5 4motion, VW Bora Saloon (1J2) 1.9 TDI 4motion, VW Bora Saloon (1J2) 1.6 16V, VW Bora Saloon (1J2) 1.8 T, VW Bora Saloon (1J2) 2.0 4motion, VW Bora Saloon (1J2) 1.6 FSI

The steps may slightly vary depending on the car design.

This tutorial was created based on the replacement procedure for a similar car part on: VW Golf IV Hatchback (1J1) 1.6

**REPLACEMENT: WINDOW REGULATOR – VW BORA SALOON (1J2). LIST OF THE TOOLS YOU'LL NEED:**



- Silicone lubricant
- Torque wrench
- Drive socket # 10
- Drive socket # 13
- Torx bit T20
- Torx bit T30
- Ratchet wrench
- Flat screwdriver
- Phillips screwdriver
- Round-nose pliers
- Drill bit set
- Drill
- Plastic trim tool
- Clip removal tool

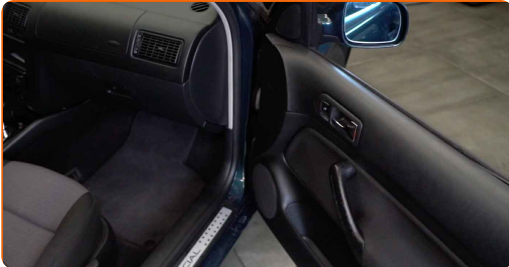
**Buy tools**

Replacement: window regulator – VW Bora Saloon (1J2). Tip from AUTODOC:

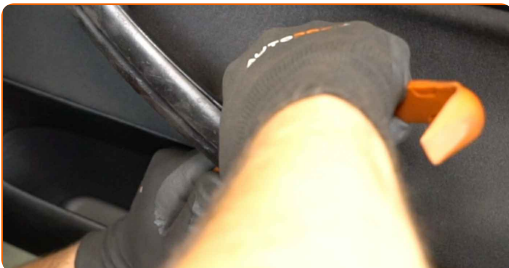
- All work should be done with the engine stopped.

**REPLACEMENT: WINDOW REGULATOR – VW BORA SALOON (1J2).  
USE THE FOLLOWING PROCEDURE:**

**1** Open the car door.



**2** Detach the door handle trim panel. Use a plastic trim tool.



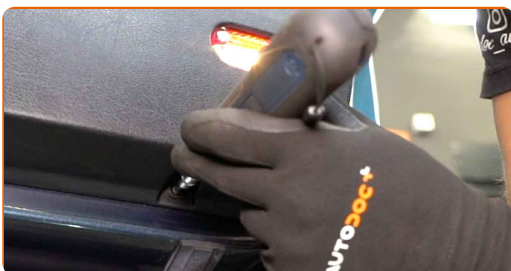
**AUTODOC recommends:**

- Replacement: window regulator – VW Bora Saloon (1J2). To avoid damaging the part when removing it, do not use excessive force.

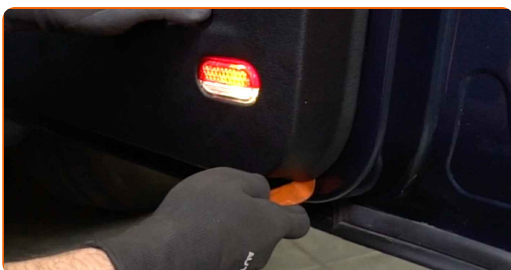
**3** Unscrew the door card fasteners. Use a Phillips screwdriver.



**4** Unscrew the lower fasteners of the door card. Use Torx T20. Use a ratchet wrench.



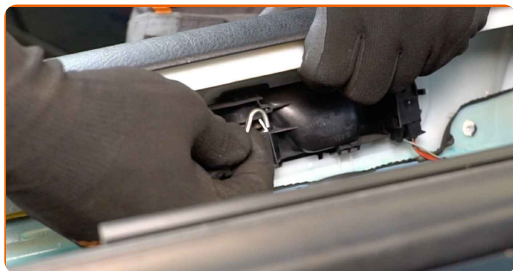
**5** Detach the door card. Use a plastic trim tool.



**AUTODOC recommends:**

- Replacement: window regulator – VW Bora Saloon (1J2). Do not use excessive force when removing the part as this may damage it.

**6** Detach the door lock actuator cable.



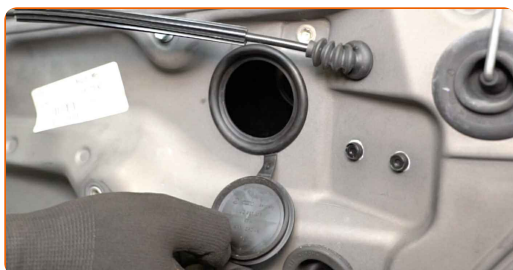
**7** Detach the door lock connector.



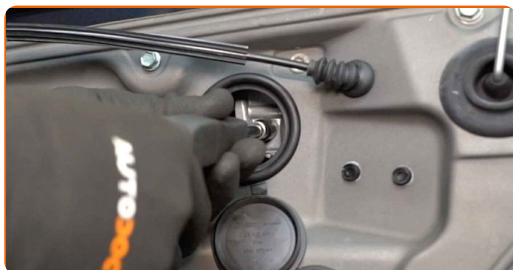
**8** Detach the bulb connector.



**9** Remove the covers from the window raiser fasteners.



**10** Unscrew the window glass fasteners. Use a drive socket #10. Use a ratchet wrench.



11

Detach the door card supporting bracket. Use a flat screwdriver.



12

Raise the glass a little and remove it.

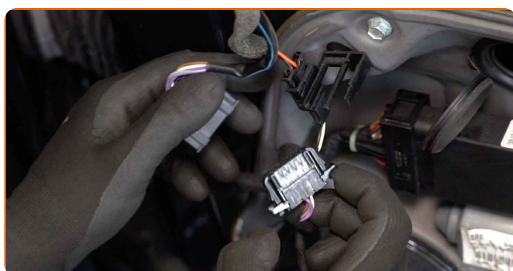


**AUTODOC recommends:**

- To avoid injury, hold the glass when raising it.
- Replacement: window regulator – VW Bora Saloon (1J2). To avoid damaging the part when removing it, do not use excessive force.

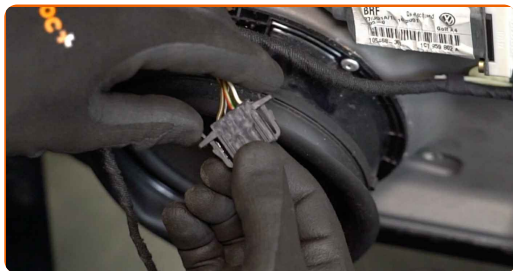
13

Detach the window switch module connectors.

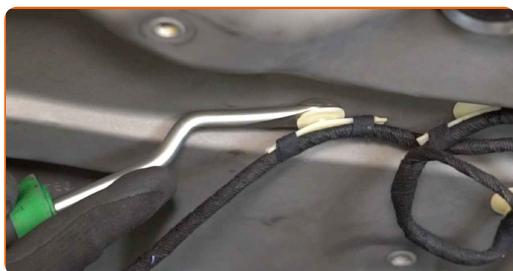




**14** Detach the speaker connector.



**15** Detach the power window wiring harness. Use a clip removal tool.



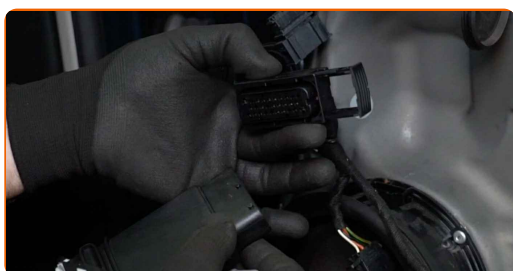
**16** Unscrew the fasteners of the power window motor. Use Torx T30. Use a ratchet wrench.



**17** Remove the power window motor.

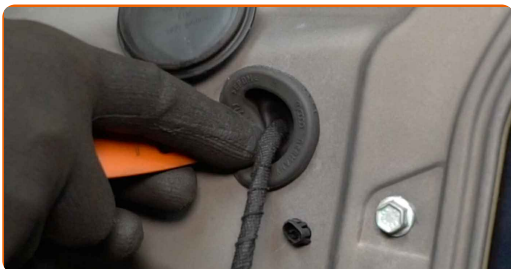


**18** Detach the power window connector.

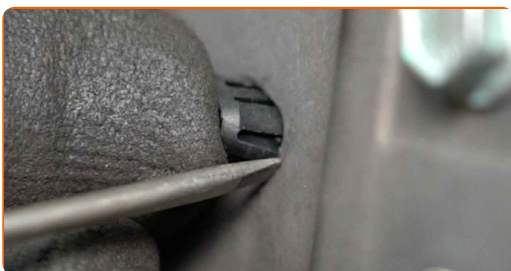




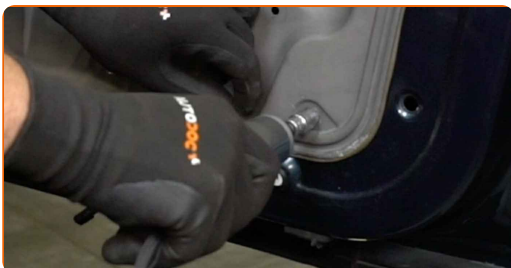
**19** Remove the door panel covers. Use a plastic trim tool.



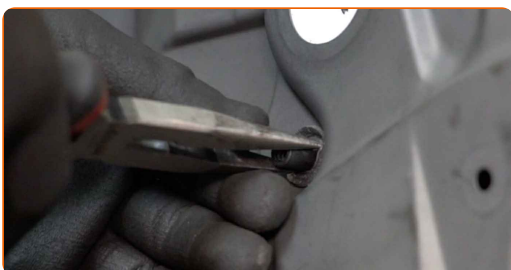
**20** Remove the door panel clips. Use a flat screwdriver.



**21** Unscrew the door panel fasteners. Use a drive socket #10. Use a ratchet wrench.



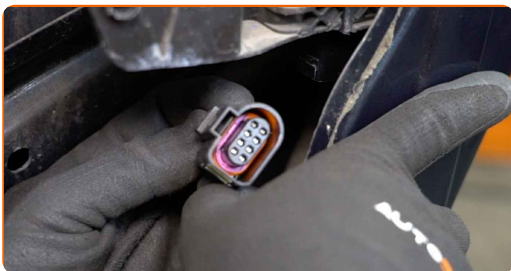
**22** Squeeze the clips and detach the window regulator drive gear. Use round-nose pliers.



**23** Remove the door panel together with the window regulator linkage. Use a plastic trim tool.



**24** Detach the connector of the central door locking module.



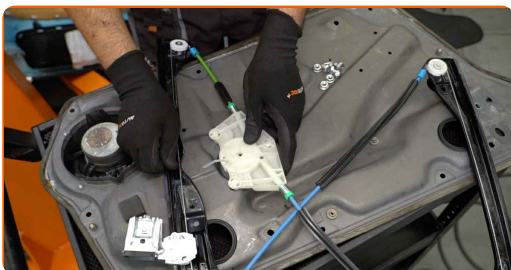
**25** Drill out the rivets of the window regulator linkage. Use a drill bit set. Use a drill.



**26** Remove the window regulator mechanism.



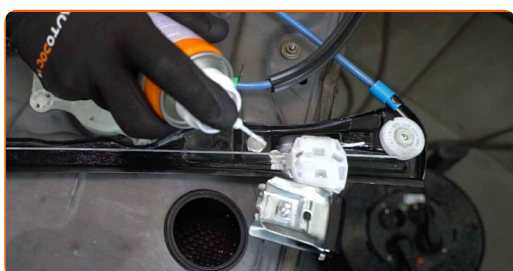
**27** Install the new window regulator mechanism.



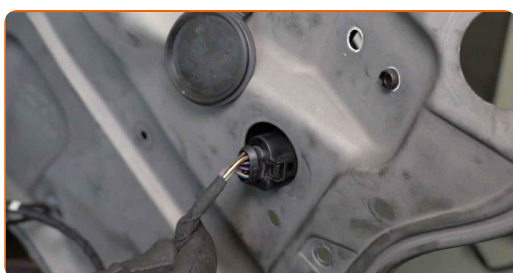
- 28** Tighten the fasteners of the window regulator assembly. Use a drive socket #13. Use a torque wrench. Tighten it to 11 Nm torque.



- 29** Treat the window regulator drive gear. Use a silicone lubricant.



- 30** Attach the connector of the central door locking module.

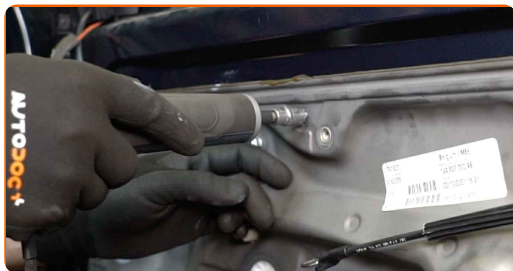


- 31** Install the door panel together with the window regulator linkage.



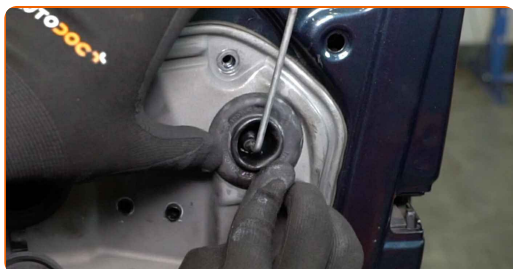
- 32** Attach the window regulator drive gear.

**33** Screw in the door panel fasteners. Use a drive socket #10. Use a ratchet wrench.



**34** Install the door panel clips.

**35** Install the door panel covers.



**36** Attach the power window wiring harness.



**37** Tighten the door panel fasteners. Use a drive socket #10. Use a torque wrench. Tighten it to 8 Nm torque.



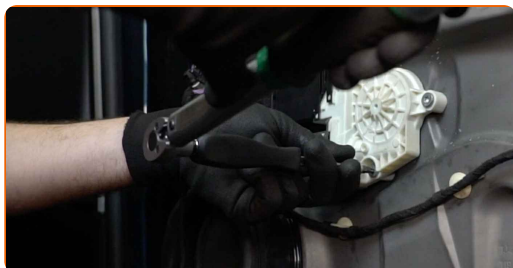
**38** Attach the power window connector.



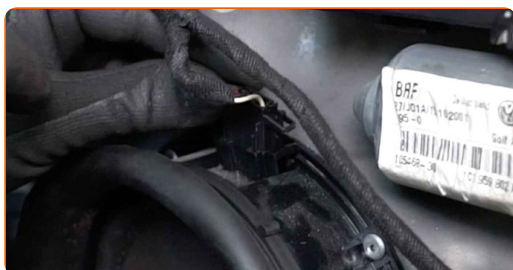
**39** Install the power window motor.



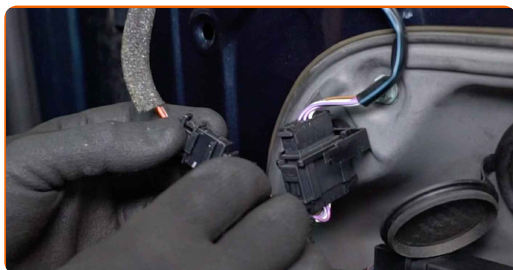
**40** Tighten the fasteners of the power window motor. Use Torx T30. Use a torque wrench. Tighten it to 4 Nm torque.



**41** Attach the speaker connector.



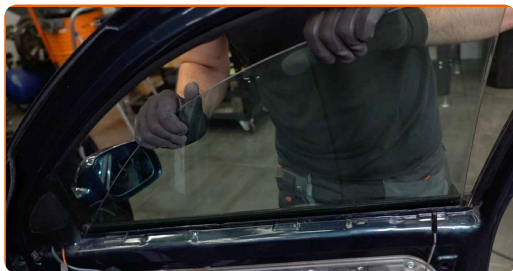
**42** Attach the window switch module connectors.





43

Lower the window glass and install it to its mounting seat in the window raiser mechanism.



**AUTODOC recommends:**

- To avoid injury, hold the glass when lowering it.
- Replacement: window regulator – VW Bora Saloon (1J2). Do not use excessive force during installation. This may damage the part.

44

Tighten the window glass fasteners. Use a drive socket #10. Use a torque wrench. Tighten it to 5 Nm torque.



45

Attach the door card supporting bracket.



**46** Install the covers on the window raiser fasteners.



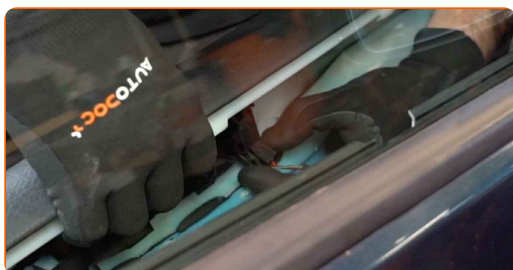
**47** Attach the bulb connector.



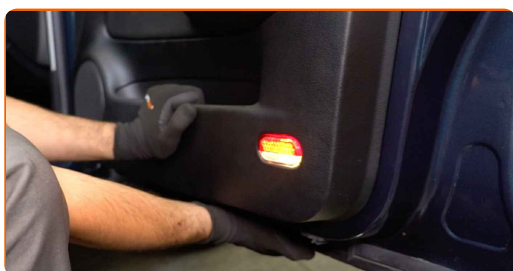
**48** Attach the door lock actuator cable.



**49** Attach the door lock connector.



**50** Reinstall the door card.

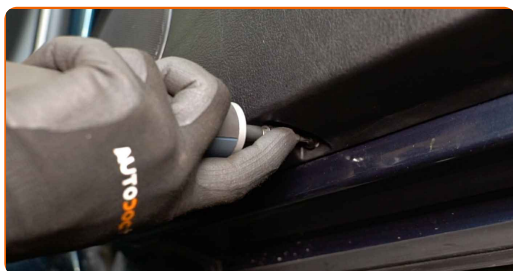




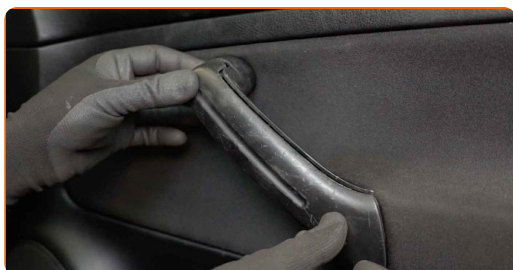
**51** Tighten the door card fasteners. Use a Phillips screwdriver. Use a torque wrench. Tighten it to 4 Nm torque.



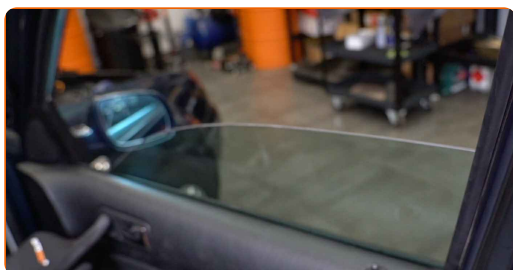
**52** Screw in the lower fasteners of the door card. Use Torx T20. Use a ratchet wrench.



**53** Attach the door handle trim panel.



**54** Switch on the ignition. This is necessary in order to make sure that the component operates properly.



**55** Switch off the ignition.

56

Close the car door.

**WELL DONE!** 

**VIEW MORE TUTORIALS**

# AUTODOC – TOP QUALITY AND AFFORDABLE CAR PARTS ONLINE

**AUTODOC MOBILE APP: GREAT DEALS AND CONVENIENT SHOPPING**



**+ AUTODOC**

GET IT ON  
 **Google Play**

Download on the  
 **App Store**

**Download**

**A GREAT SELECTION OF SPARE PARTS FOR YOUR CAR**

**WINDOW REGULATOR: A WIDE SELECTION**

## **DISCLAIMER:**

The document contains only general recommendations that may be useful for you when you perform repair or replacement work. AUTODOC shall not be liable for any loss, injury, damage of property occurring in the repair or replacement process due to incorrect use or misinterpretation of the provided information.

AUTODOC shall not be liable for any possible mistakes and uncertainties in this guide. The information provided is for information purposes only and cannot replace advice from specialists.

AUTODOC shall not be liable for incorrect or hazardous usage of equipment, tools and car parts. AUTODOC strongly recommends to be careful and observe the safety rules when performing repair or replacement works. Remember: usage of low quality auto parts does not guarantee you the appropriate level of road safety.

© Copyright 2023 – All the contents of this website, in particular texts, photographs and graphics, are protected by copyright. All rights, including reproduction, publication, editing and translation rights, are reserved by AUTODOC SE.