



How to change front ABS
sensor on **VW Beetle**
Hatchback (5C1, 5C2) –
replacement guide

SIMILAR VIDEO TUTORIAL



This video shows the replacement procedure of a similar car part on another vehicle

Important!

This replacement procedure can be used for:

VW Beetle Hatchback (5C1, 5C2) 1.2 TSI, VW Beetle Hatchback (5C1, 5C2) 2.0 TSI, VW Beetle Hatchback (5C1, 5C2) 1.4 TSI, VW Beetle Hatchback (5C1, 5C2) 1.6 TDI, VW Beetle Hatchback (5C1, 5C2) 2.0 TDI, VW Beetle Hatchback (5C1, 5C2) 1.2 TSI 16V

The steps may slightly vary depending on the car design.

This tutorial was created based on the replacement procedure for a similar car part on: VW Passat Saloon (362) 2.0 TDI

**REPLACEMENT: ABS SENSOR – VW BEETLE
HATCHBACK (5C1, 5C2). LIST OF THE TOOLS YOU'LL
NEED:**



- Wire brush
- Nylon cleaning brush
- WD-40 spray
- Brake cleaner
- Electronic spray
- Multipurpose grease
- Copper grease
- Torque wrench
- HEX bit No.H5
- Wheel impact socket #17
- Ratchet wrench
- Flat screwdriver
- Wheel chock

Buy tools

Replacement: ABS sensor – VW Beetle Hatchback (5C1, 5C2). AUTODOC experts recommend:

- All work should be done with the engine stopped.

REPLACEMENT: ABS SENSOR – VW BEETLE HATCHBACK (5C1, 5C2). USE THE FOLLOWING PROCEDURE:

1 Secure the wheels with chocks.

2 Loosen the wheel mounting bolts. Use wheel impact socket #17.



3 Raise the front of the car and secure on supports.

4 Unscrew the wheel bolts.



AUTODOC recommends:

- Warning! To avoid injury, hold the wheel while unscrewing the fastening bolts. VW Beetle Hatchback (5C1, 5C2)

5 Remove the wheel.



6 Detach the ABS sensor connector.



7 Clean the ABS sensor fastener. Use a wire brush. Use WD-40 spray.



8 Unscrew the ABS sensor fastener. Use HEX No.H5. Use a ratchet wrench.



9 Disconnect the ABS sensor.



10 Clean the ABS sensor mounting seat. Use a wire brush. Use WD-40 spray.



11 Treat the ABS sensor fastener. Use a multipurpose grease. Use a flat screwdriver.



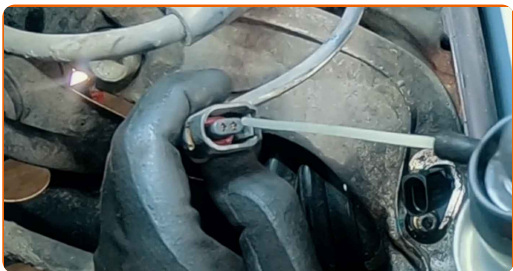
12 Connect the ABS sensor.



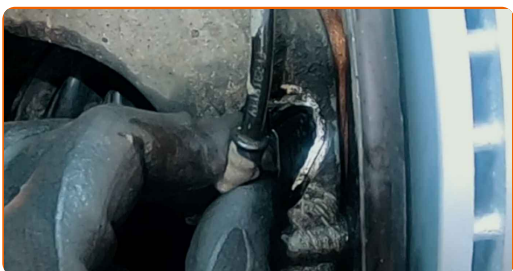
13 Tighten the fastener that connects the ABS sensor to the steering knuckle. Use HEX No.H5. Use a torque wrench. Tighten it to 7 Nm torque.



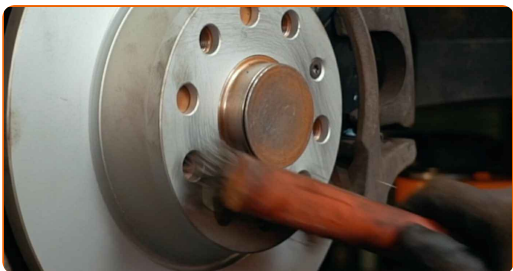
14 Treat the ABS sensor connector. Use a nylon cleaning brush. Use dielectric grease.



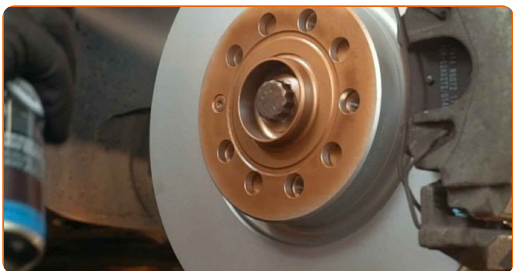
15 Attach the ABS sensor connector.



16 Clean the wheel rim mounting seat. Use a wire brush.



17 Treat the surface where the brake disc contacts the wheel rim. Use copper grease.



18

Clean the brake disk surface. Use a brake cleaner.



AUTODOC recommends:

- Replacement: ABS sensor – VW Beetle Hatchback (5C1, 5C2). After applying the spray, wait a few minutes.

19

Install the wheel.



AUTODOC recommends:

- Warning! To avoid injury, hold the wheel while screwing in the fastening bolts on the car. VW Beetle Hatchback (5C1, 5C2)

20

Screw in the wheel bolts. Use wheel impact socket #17.



21 Lower the car and working in a cross order, tighten the wheel bolts. Use wheel impact socket #17. Use a torque wrench. Tighten it to 120 Nm torque.

22 Remove the jacks and chocks.



WELL DONE! 

[VIEW MORE TUTORIALS](#)

AUTODOC – TOP QUALITY AND AFFORDABLE CAR PARTS ONLINE

AUTODOC MOBILE APP: GREAT DEALS AND CONVENIENT SHOPPING



+ AUTODOC

GET IT ON
Google Play

 Download on the
App Store

Download

A GREAT SELECTION OF SPARE PARTS FOR YOUR CAR

ABS SENSOR: A WIDE SELECTION

DISCLAIMER:

The document contains only general recommendations that may be useful for you when you perform repair or replacement work. AUTODOC shall not be liable for any loss, injury, damage of property occurring in the repair or replacement process due to incorrect use or misinterpretation of the provided information.

AUTODOC shall not be liable for any possible mistakes and uncertainties in this guide. The information provided is for information purposes only and cannot replace advice from specialists.

AUTODOC shall not be liable for incorrect or hazardous usage of equipment, tools and car parts. AUTODOC strongly recommends to be careful and observe the safety rules when performing repair or replacement works. Remember: usage of low quality auto parts does not guarantee you the appropriate level of road safety.

© Copyright 2022 – All the contents of this website, in particular texts, photographs and graphics, are protected by copyright. All rights, including reproduction, publication, editing and translation rights, are reserved by AUTODOC GmbH.