



How to change rear coil
springs on **VW Beetle
Convertible (5C7, 5C8)** –
replacement guide

SIMILAR VIDEO TUTORIAL



This video shows the replacement procedure of a similar car part on another vehicle

Important!

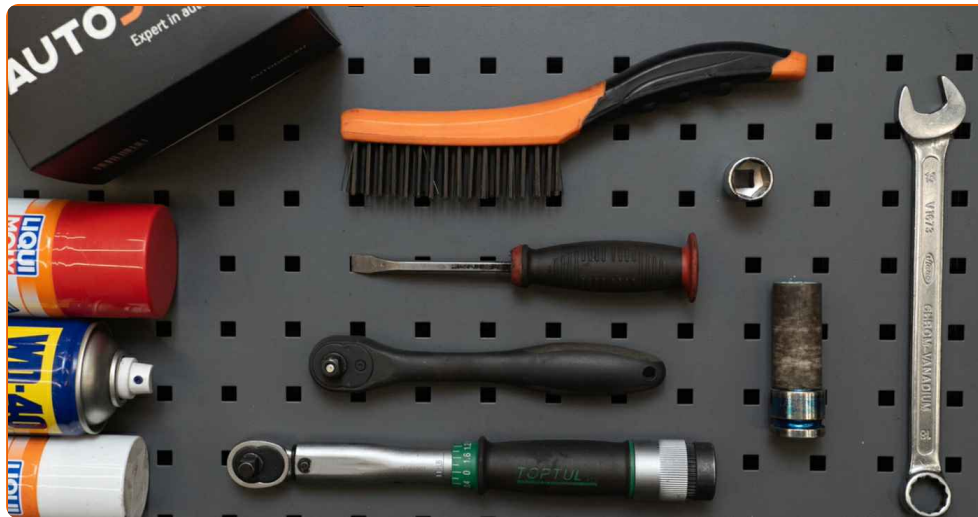
This replacement procedure can be used for:

VW Beetle Convertible (5C7, 5C8) 1.2 TSI, VW Beetle Convertible (5C7, 5C8) 1.4 TSI, VW Beetle Convertible (5C7, 5C8) 1.6 TDI, VW Beetle Convertible (5C7, 5C8) 2.0 TDI, VW Beetle Convertible (5C7, 5C8) 2.0 TSI, VW Beetle Convertible (5C7, 5C8) 2.5, VW Beetle Convertible (5C7, 5C8) 1.2 TSI 16V

The steps may slightly vary depending on the car design.

This tutorial was created based on the replacement procedure for a similar car part on: SKODA Octavia II Combi (1Z5) 1.8 TSI

REPLACEMENT: COIL SPRINGS – VW BEETLE CONVERTIBLE (5C7, 5C8). LIST OF THE TOOLS YOU'LL NEED:



- Wire brush
- WD-40 spray
- Brake cleaner
- Copper grease
- Combination spanner #18
- Drive socket # 18
- Wheel impact socket #17
- Ratchet wrench
- Torque wrench
- Crow bar
- Hydraulic transmission jack
- Wheel chock

Buy tools

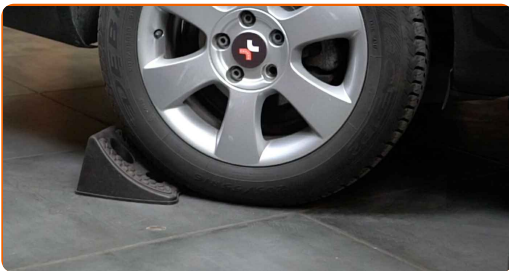
Replacement: coil springs – VW Beetle Convertible (5C7, 5C8). AUTODOC recommends:

- Both coil springs of the rear suspension should be replaced simultaneously.
- The replacement procedure is identical for the left and right coil springs of the rear suspension.
- All work should be done with the engine stopped.

REPLACEMENT: COIL SPRINGS – VW BEETLE CONVERTIBLE (5C7, 5C8). RECOMMENDED SEQUENCE OF STEPS:

1

Secure the wheels with chocks.



2

Loosen the wheel mounting bolts. Use wheel impact socket #17.



3

Raise the rear of the car and secure on supports.

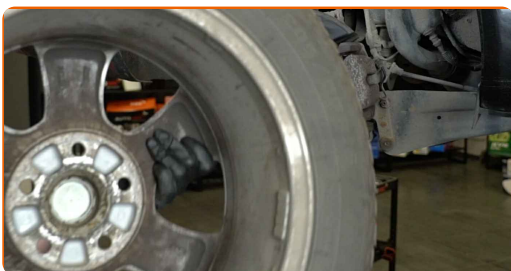
4 Unscrew the wheel bolts.



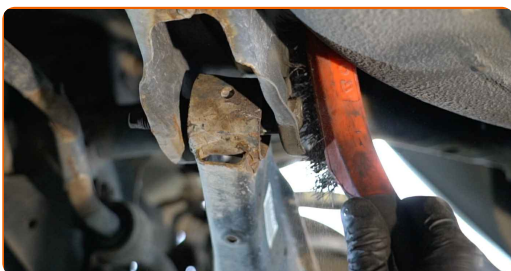
Replacement: coil springs – VW Beetle Convertible (5C7, 5C8). Tip:

- To avoid injury, hold up the wheel when unscrewing the bolts.

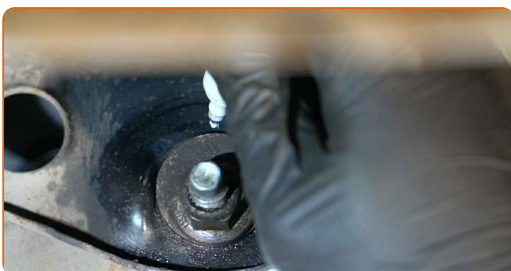
5 Remove the wheel.



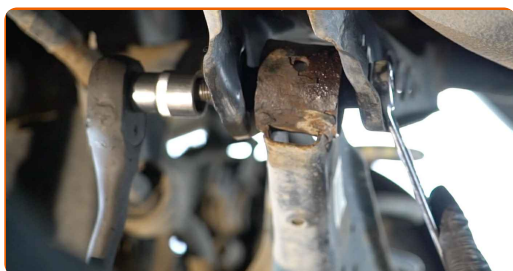
6 Clean all joints of the arm. Use a wire brush. Use WD-40 spray.



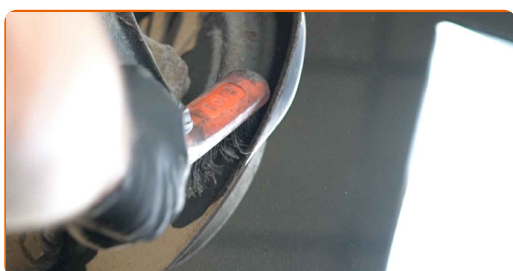
7 Make a mark on the camber adjustment bolt.



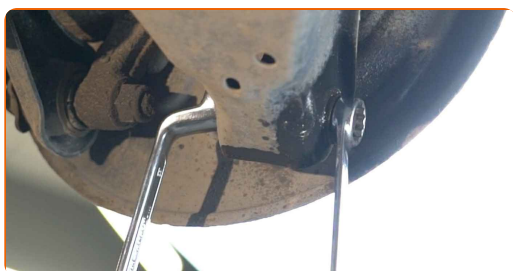
- 8 Unscrew the arm fastening to the beam. Use a combination spanner #18. Use a drive socket #18. Use a ratchet wrench.



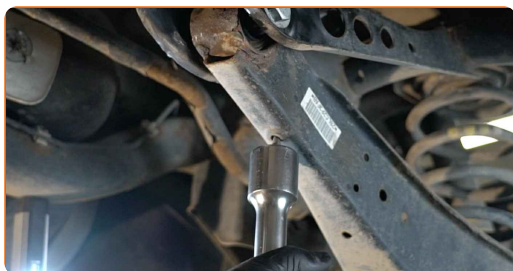
- 9 Clean all joints of the arm. Use a wire brush. Use WD-40 spray.



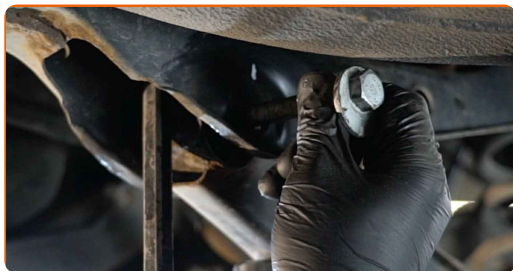
- 10 Unscrew the fastener connecting the control arm to the rear knuckle. Use a combination spanner #18 (2 pieces).



- 11 Support the arm. Use a hydraulic transmission jack.



12 Remove the fastening bolt. Use a combination spanner #18. Use a crowbar.



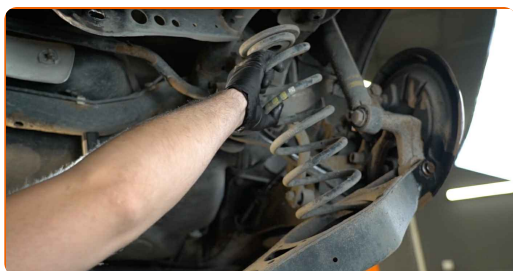
13 Remove the support from under the arm. Use a crowbar.



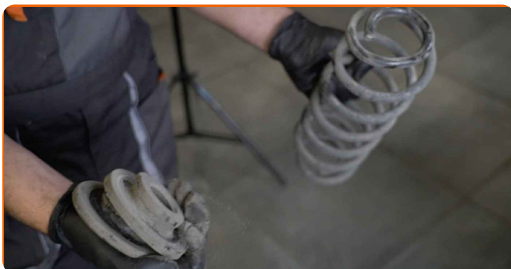
AUTODOC recommends:

- Replacement: coil springs – VW Beetle Convertible (5C7, 5C8). Lower the transmission jack smoothly, without jerks, to avoid damaging components and mechanisms.

14 Pull down the suspension control arm. Take out the spring.



15 Remove the rubber spring spacer.



16 Clean the coil spring mounting seats. Use a wire brush. Use WD-40 spray.



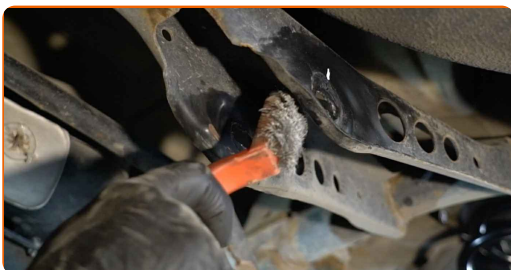
17 Install the rubber spacer on the new coil spring.



18 Install the coil spring together with the rubber mounts into the mounting seats.



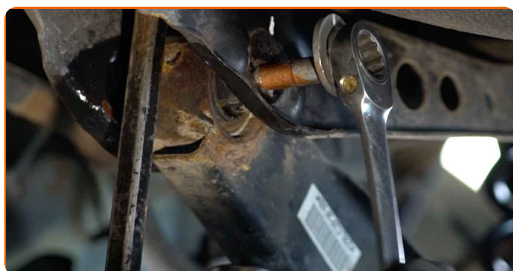
19 Clean the mounting seats and the thread of the suspension arm. Use a wire brush. Use WD-40 spray.



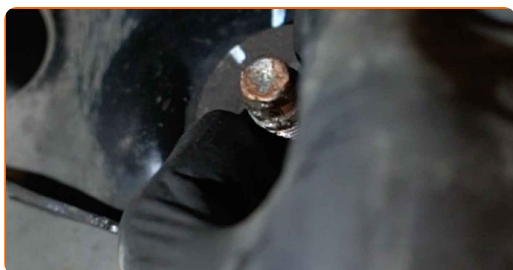
20 Support the arm. Use a hydraulic transmission jack. Use a crowbar.



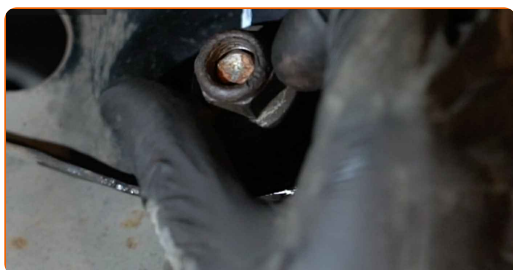
21 Install the fastening bolt.



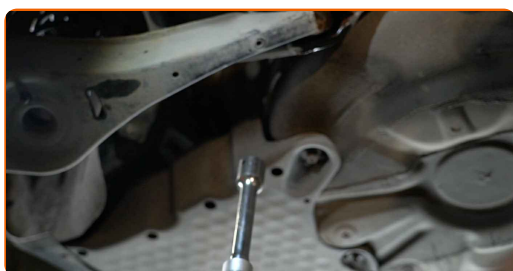
22 Adjust the position of the alignment bolt according to the mark.



23 Screw in the fastener connecting the control arm to the subframe. Use a drive socket #18. Use a ratchet wrench.



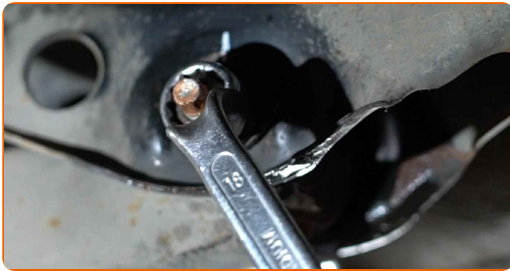
24 Remove the support from under the arm.



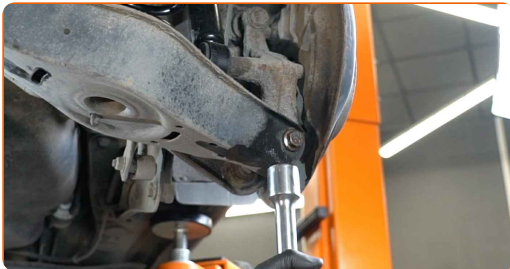
Replacement: coil springs – VW Beetle Convertible (5C7, 5C8). AUTODOC experts recommend:

- Lower the hydraulic transmission jack smoothly, without jerks, to avoid damaging assemblies and mechanisms.

25 Screw in the fastener connecting the control arm to the subframe. Use a combination spanner #18 (2 pieces).



26 Support the arm. Use a hydraulic transmission jack.



27 Screw in the fastener that connects the control arm to the rear knuckle. Use a combination spanner #18 (2 pieces).

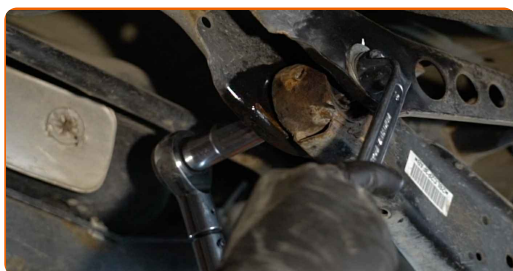
28 Tighten the fastener connecting the suspension arm to the rear knuckle. Use a combination spanner #18. Use a drive socket #18. Use a torque wrench. Tighten it to 90 Nm torque.+90°



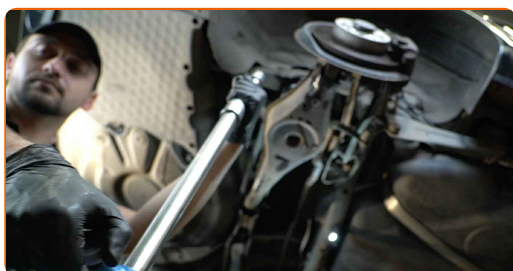
AUTODOC recommends:

- Important! Be sure to use new fasteners.

29 Tighten the arm fastening to the beam. Use a combination spanner #18. Use a drive socket #18. Use a torque wrench. Tighten it to 95 nm torque.



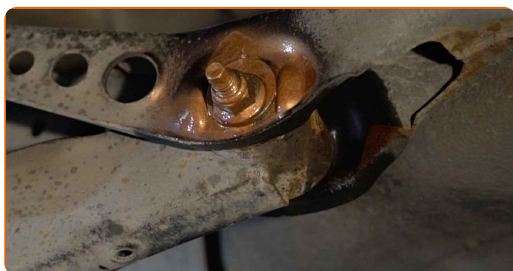
30 Remove the support from under the arm.



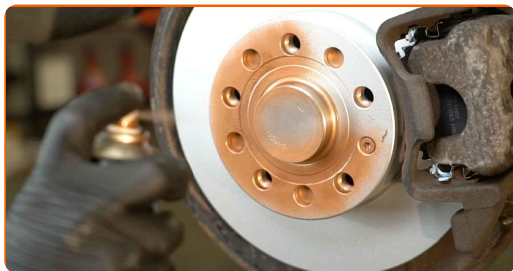
AUTODOC recommends:

- VW Beetle Convertible (5C7, 5C8) – Do not lower the transmission jack sharply to avoid damaging components and mechanisms of the car.

31 Treat the shock absorber fasteners. Treat all joints of the arm. Use copper grease.



32 Treat the surface where the brake disc contacts the wheel rim. Use copper grease.



33 Clean the brake disk surface. Use a brake cleaner.



Replacement: coil springs – VW Beetle Convertible (5C7, 5C8). Professionals recommend:

- After applying the spray, wait a few minutes.

34 Install the wheel.



AUTODOC recommends:

- Warning! To avoid injury, hold the wheel while screwing in the fastening bolts on the car. VW Beetle Convertible (5C7, 5C8)

35

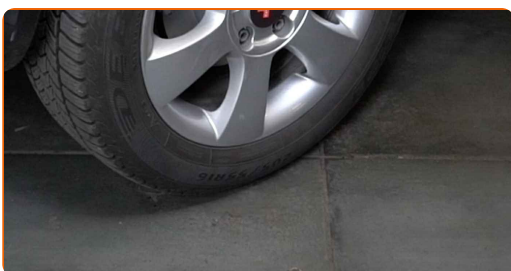
Screw in the wheel bolts. Use wheel impact socket #17.

**36**

Lower the car and working in a cross order, tighten the wheel bolts. Use wheel impact socket #17. Use a torque wrench. Tighten it to 120 Nm torque.

**37**

Remove the jacks and chocks.



WELL DONE! 

VIEW MORE TUTORIALS

AUTODOC – TOP QUALITY AND AFFORDABLE CAR PARTS ONLINE

AUTODOC MOBILE APP: GREAT DEALS AND CONVENIENT SHOPPING



+ AUTODOC

GET IT ON
Google Play

 Download on the
App Store

Download

A GREAT SELECTION OF SPARE PARTS FOR YOUR CAR

COIL SPRINGS: A WIDE SELECTION

DISCLAIMER:

The document contains only general recommendations that may be useful for you when you perform repair or replacement work. AUTODOC shall not be liable for any loss, injury, damage of property occurring in the repair or replacement process due to incorrect use or misinterpretation of the provided information.

AUTODOC shall not be liable for any possible mistakes and uncertainties in this guide. The information provided is for information purposes only and cannot replace advice from specialists.

AUTODOC shall not be liable for incorrect or hazardous usage of equipment, tools and car parts. AUTODOC strongly recommends to be careful and observe the safety rules when performing repair or replacement works. Remember: usage of low quality auto parts does not guarantee you the appropriate level of road safety.

© Copyright 2023 – All the contents of this website, in particular texts, photographs and graphics, are protected by copyright. All rights, including reproduction, publication, editing and translation rights, are reserved by AUTODOC SE.