



How to change rear  
shock absorbers on **VW  
Beetle Convertible (5C7,  
5C8)** – replacement  
guide

## SIMILAR VIDEO TUTORIAL



This video shows the replacement procedure of a similar car part on another vehicle

### Important!

This replacement procedure can be used for:

VW Beetle Convertible (5C7, 5C8) 1.2 TSI, VW Beetle Convertible (5C7, 5C8) 1.4 TSI,  
VW Beetle Convertible (5C7, 5C8) 1.6 TDI, VW Beetle Convertible (5C7, 5C8) 2.0 TDI,  
VW Beetle Convertible (5C7, 5C8) 2.0 TSI, VW Beetle Convertible (5C7, 5C8) 2.5

The steps may slightly vary depending on the car design.

This tutorial was created based on the replacement procedure for a similar car part on: VW Passat Variant (3C5) 2.0 TDI

REPLACEMENT: SHOCK ABSORBERS – VW BEETLE CONVERTIBLE (5C7, 5C8). TOOLS YOU MIGHT NEED:



- Wire brush
- WD-40 spray
- Brake cleaner
- Copper grease
- Combination spanner #14
- Combination spanner #18
- Drive socket # 16
- Drive socket # 18
- Drive socket # 21
- Torx bit T25
- Wheel impact socket #17
- Ratchet wrench
- Torque wrench
- Shock absorber socket DDN#5
- Crow bar
- Vice
- Hydraulic transmission jack
- Wheel chock

**Buy tools**

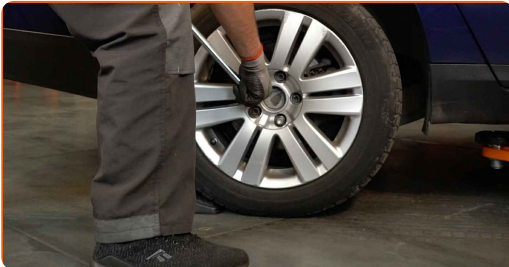
Replacement: shock absorbers – VW Beetle Convertible (5C7, 5C8). AUTODOC recommends:

- Both shock absorbers of the rear suspension should be replaced simultaneously.
- The replacement procedure is identical for the left and right shock absorbers of the rear suspension.
- All work should be done with the engine stopped.

**REPLACEMENT: SHOCK ABSORBERS – VW BEETLE CONVERTIBLE (5C7, 5C8). RECOMMENDED SEQUENCE OF STEPS:**

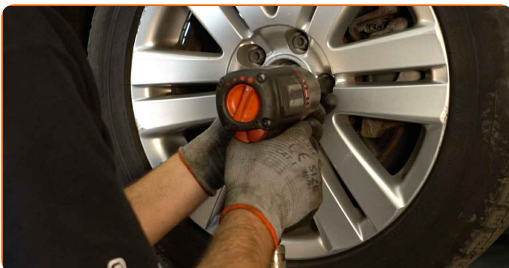
**1** Secure the wheels with chocks.

**2** Loosen the wheel mounting bolts. Use wheel impact socket #17.



**3** Raise the rear of the car and secure on supports.

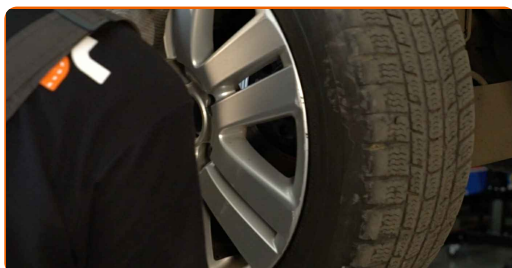
**4** Unscrew the wheel bolts.



Replacement: shock absorbers – VW Beetle Convertible (5C7, 5C8). Tip:

- To avoid injury, hold up the wheel when unscrewing the bolts.

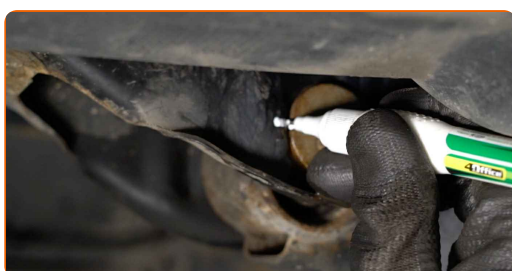
**5** Remove the wheel.



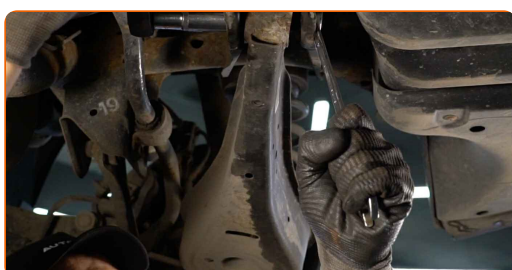
**6** Clean all joints of the arm. Use a wire brush. Use WD-40 spray.



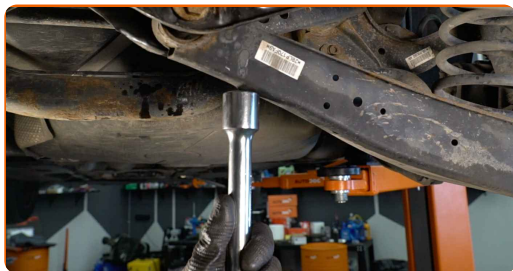
**7** Make a mark on the camber adjustment bolt.



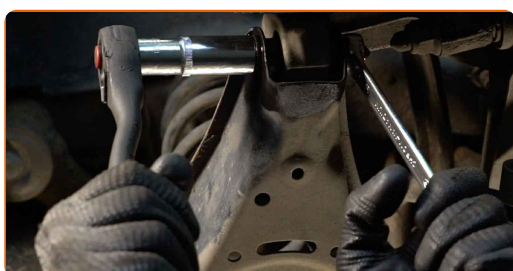
**8** Unscrew the arm fastening to the beam. Use a combination spanner #18. Use a drive socket #18. Use a ratchet wrench.



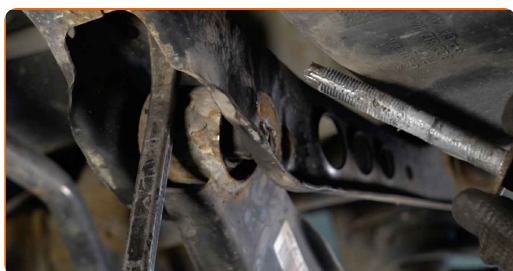
**9** Support the arm. Use a hydraulic transmission jack.



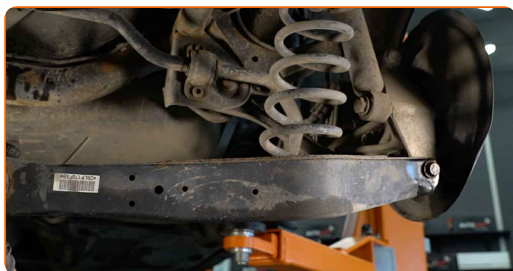
**10** Unscrew the fastener connecting the control arm to the rear knuckle. Use a combination spanner #18. Use a drive socket #18. Use a ratchet wrench.



**11** Remove the fastening bolt. Use a crowbar.



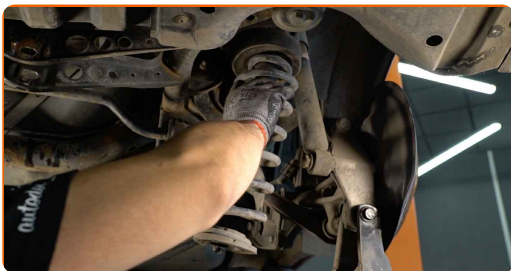
**12** Remove the support from under the arm.



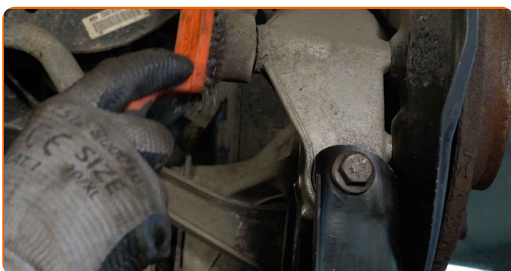
**AUTODOC recommends:**

- Replacement: shock absorbers – VW Beetle Convertible (5C7, 5C8). Lower the transmission jack smoothly, without jerks, to avoid damaging components and mechanisms.

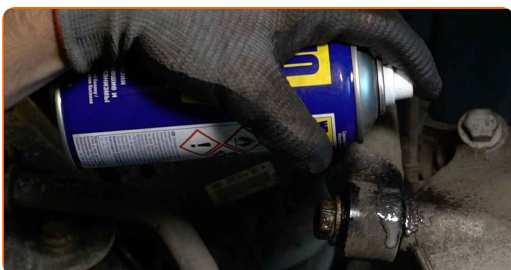
**13** Remove the spring.



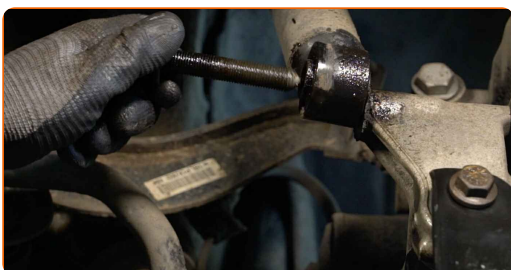
**14** Clean the mounting seats and the thread of the suspension arm. Use a wire brush. Use WD-40 spray.



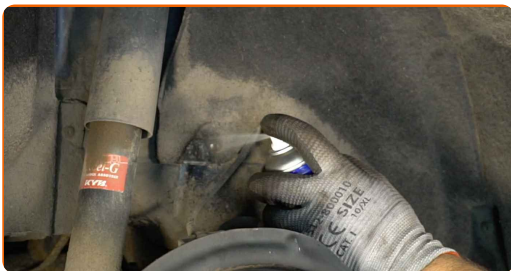
**15** Clean the shock absorber fasteners. Use a wire brush. Use WD-40 spray.



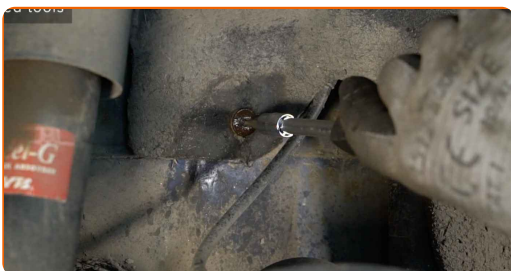
**16** Unscrew the lower fasteners of the shock absorber. Use a drive socket #21. Use a ratchet wrench.



**17** Clean the fasteners of the locker. Use a wire brush. Use WD-40 spray.



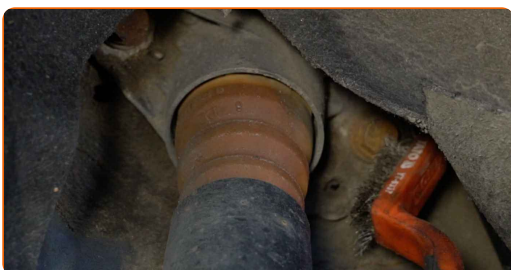
**18** Unscrew the wheel arch cover fasteners. Use Torx T25. Use a ratchet wrench.



**19** Remove the wheel arch cover.



**20** Clean the shock absorber fasteners. Use a wire brush. Use WD-40 spray.



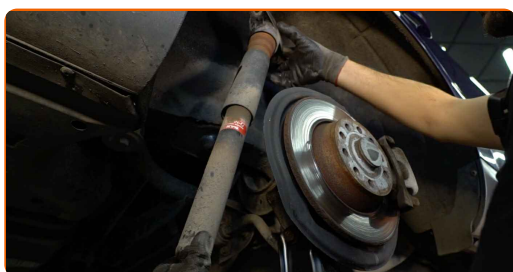


**21** Unscrew the upper fastener of the shock absorber. Use a drive socket #16. Use a ratchet wrench.

**AUTODOC recommends:**

- Important! Hold the shock absorber while unscrewing the fastening bolts. VW Beetle Convertible (5C7, 5C8)

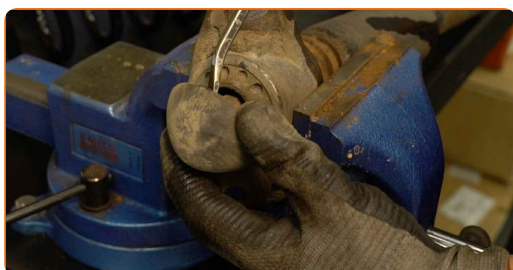
**22** Remove the shock absorber.



**23** Grip the shock absorber in a vice.



**24** Remove the protective cap of the shock absorber mount. Use a crowbar.



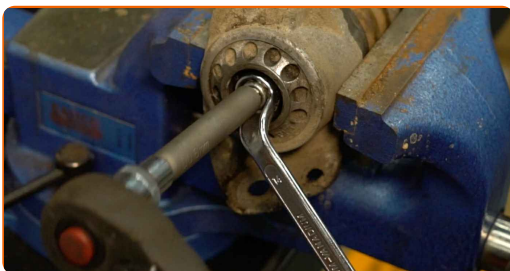
**25**

Clean the shock absorber rod fastener. Use a wire brush. Use WD-40 spray.



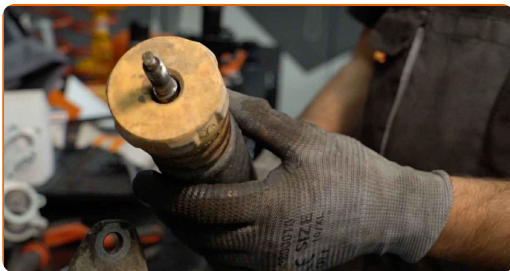
**26**

Remove the shock absorber piston rod fastening. Use a shock absorber socket DD#5. Use a drive socket #17. Use a ratchet wrench.



**27**

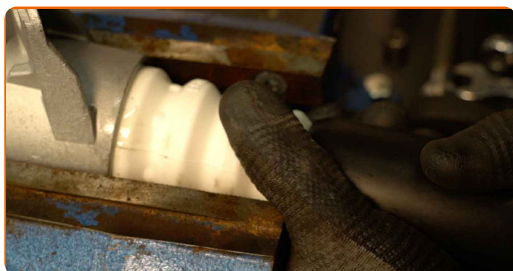
Remove the shock absorber mount, boot and bump stop.



**AUTODOC recommends:**

- Replacement: shock absorbers – VW Beetle Convertible (5C7, 5C8). Carefully inspect the mount, the boot, and the bump stop of the shock absorber. Replace if necessary.
- Before installing a new shock absorber you should pump it manually 3-5 times.

**28** Install the mount, boot and bump stop onto a new shock absorber.



**29** Screw the shock strut piston rod upper fastening. Use a combination spanner #14. Use a shock absorber socket DD#5. Use a torque wrench. Tighten it to 25 Nm torque.



**30** Release the vice and take out the shock absorber.



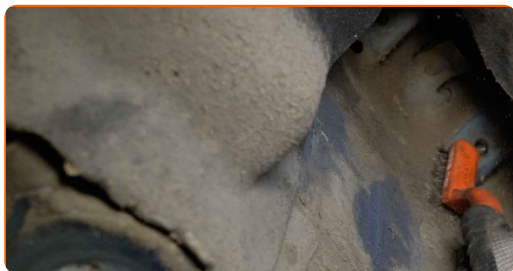
**31** Treat the shock absorber rod fastener. Use copper grease.



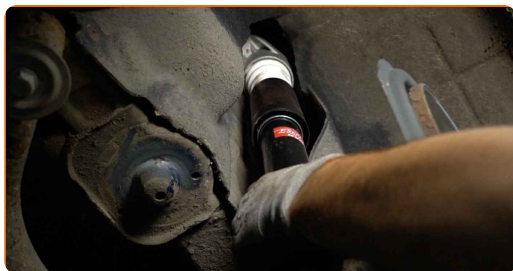
**32** Install the protective shock absorber mounting cap.



**33** Clean the shock absorber mounting seats. Use a wire brush. Use WD-40 spray.



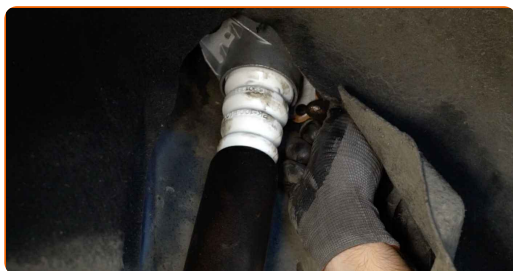
**34** Place the shock absorber in the wheel arch and secure it.



**Replacement: shock absorbers – VW Beetle Convertible (5C7, 5C8). Tip:**

- To avoid injury, hold the shock absorber cautiously tight when screwing in the fastening bolts.

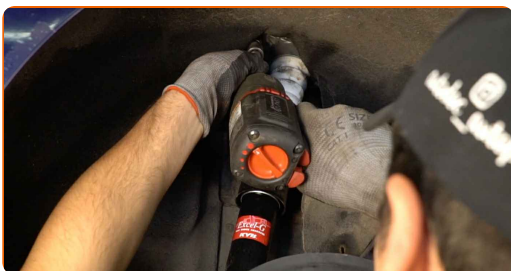
**35** Screw the upper fastener of the shock absorber. Use a drive socket #16.



Replacement: shock absorbers – VW Beetle Convertible (5C7, 5C8). Tip from AUTODOC:

- Install the shock absorber mount using the center hole as a guide.

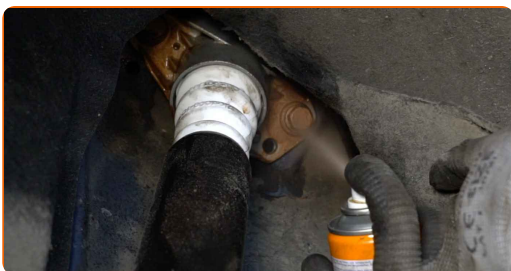
**36** Tighten the top shock absorber fastening. Use a drive socket #16. Use a torque wrench. Tighten it to 50 Nm torque.+45°



AUTODOC recommends:

- Important! Be sure to use new fasteners.

**37** Treat the shock absorber fasteners. Use copper grease.



**38** Install the wheel arch cover to its mounting seat.



39

Install and tighten the wheel arch cover fasteners. Use Torx T25. Use a ratchet wrench.



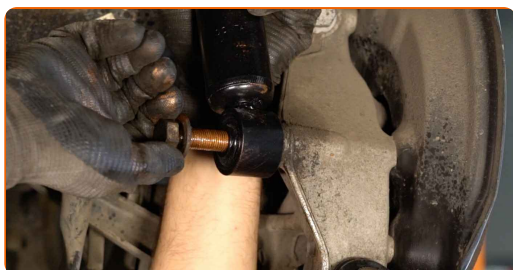
40

Clean the shock absorber mounting seats. Use a wire brush. Use WD-40 spray.



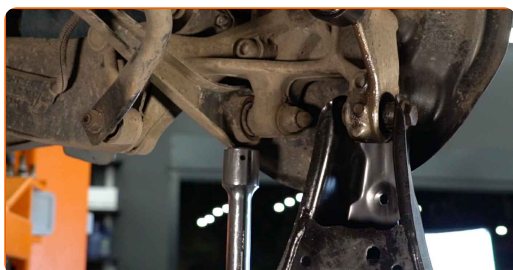
41

Screw in the lower fastener of the shock absorber. Use a drive socket #21. Use a ratchet wrench.

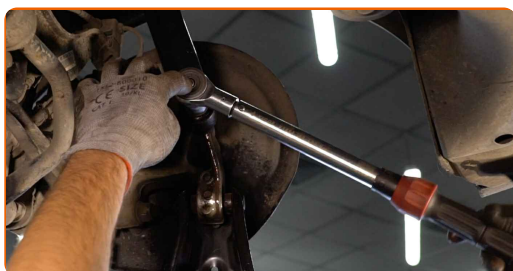


42

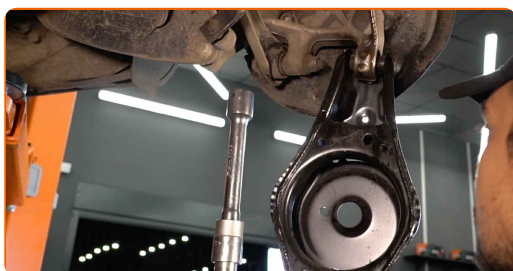
Support the stub axle. Use a hydraulic transmission jack.



- 43** Tighten the lower fastener of the shock absorber. Use a drive socket #21. Use a torque wrench. Tighten it to 180 Nm torque.



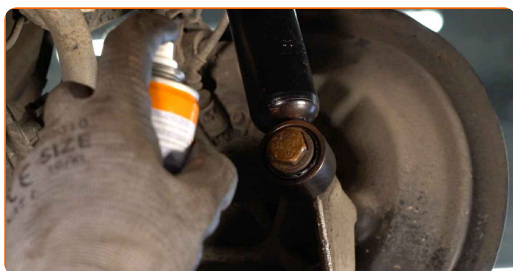
- 44** Remove the support from under the stub axle.



Replacement: shock absorbers – VW Beetle Convertible (5C7, 5C8). AUTODOC experts recommend:

- Lower the hydraulic transmission jack smoothly, without jerks, to avoid damaging assemblies and mechanisms.

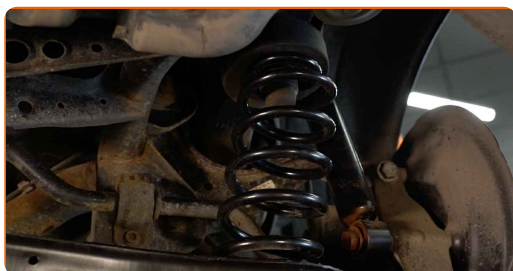
- 45** Treat the shock absorber fasteners. Use copper grease.



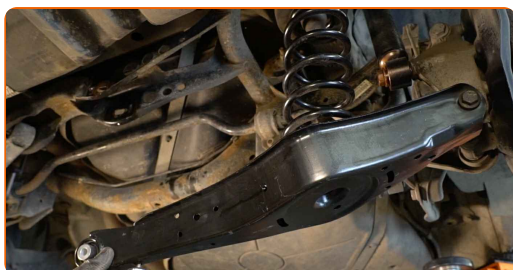
**46** Clean the coil spring mounting seats. Use a wire brush. Use WD-40 spray.



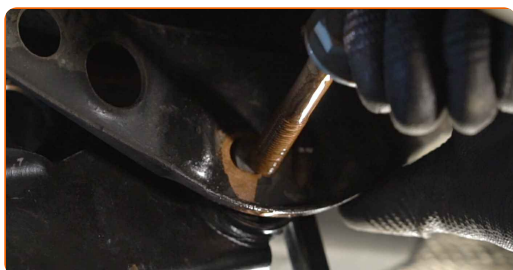
**47** Install the coil spring together with the rubber mounts into the mounting seats.



**48** Support the arm. Use a hydraulic transmission jack. Use a crowbar.



**49** Install the fastening bolt. Use a crowbar.

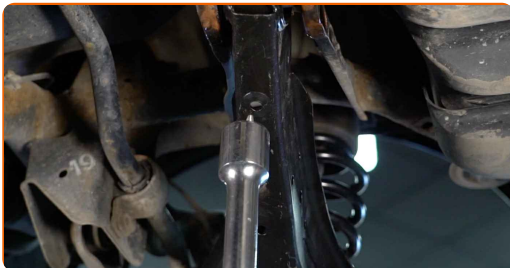




- 50** Screw in the fastener connecting the control arm to the rear subframe. Use a combination spanner #18. Use a drive socket #18. Use a ratchet wrench.



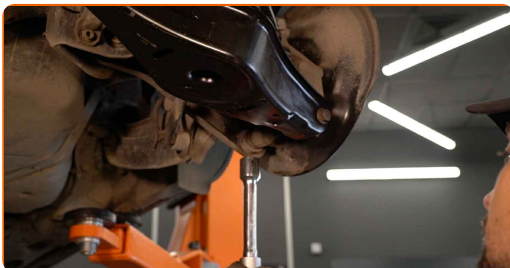
- 51** Remove the support from under the arm.



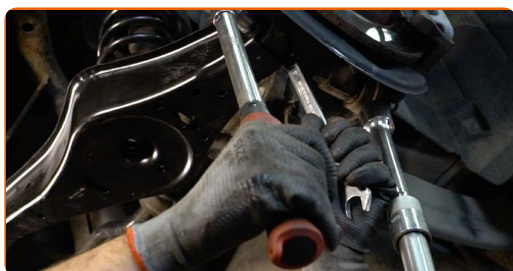
**AUTODOC recommends:**

- VW Beetle Convertible (5C7, 5C8) – Do not lower the transmission jack sharply to avoid damaging components and mechanisms of the car.

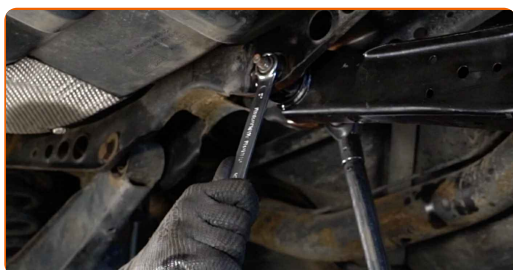
- 52** Support the stub axle. Use a hydraulic transmission jack.



- 53** Tighten the arm fastening to the beam. Use a combination spanner #18. Use a drive socket #18. Use a torque wrench. Tighten it to 95 Nm torque.



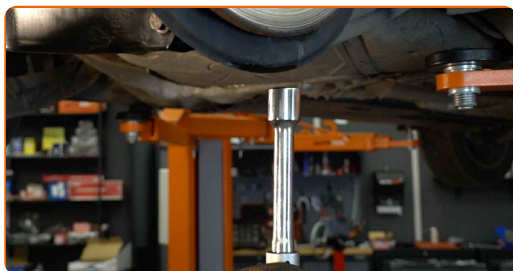
- 54** Tighten the fasteners connecting the control arm to the rear knuckle. Use a combination spanner #18. Use a drive socket #18. Use a torque wrench. Tighten it to 90 Nm torque.+90°



**AUTODOC recommends:**

- Important! Be sure to use new fasteners.

- 55** Remove the support from under the stub axle.

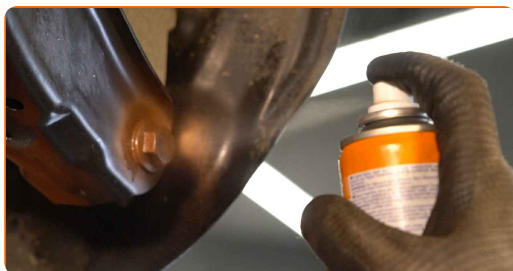


Replacement: shock absorbers – VW Beetle Convertible (5C7, 5C8). AUTODOC experts recommend:

- Lower the hydraulic transmission jack smoothly, without jerks, to avoid damaging assemblies and mechanisms.

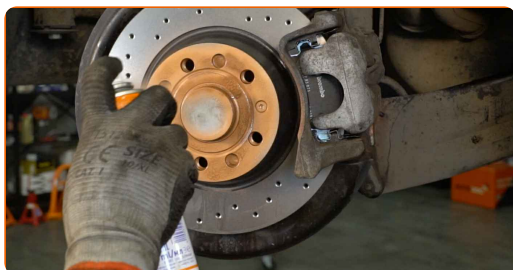
56

Treat all joints of the arm. Use copper grease.



57

Treat the surface where the brake disc contacts the wheel rim. Use copper grease.



58

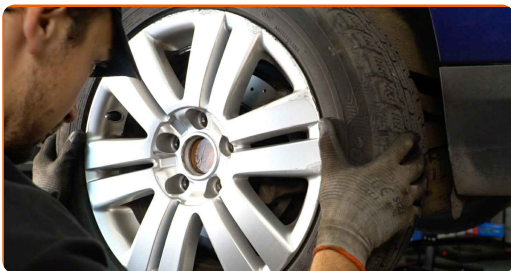
Clean the brake disk surface. Use a brake cleaner.



**AUTODOC recommends:**

- Replacement: shock absorbers – VW Beetle Convertible (5C7, 5C8). After applying the spray, wait a few minutes.

**59** Install the wheel.



**AUTODOC recommends:**

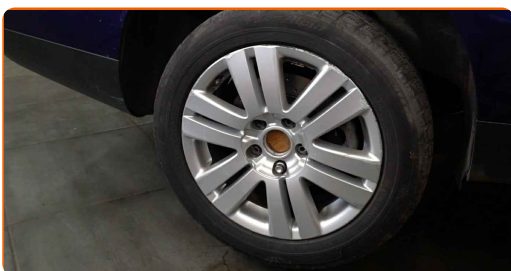
- To avoid injury, hold up the wheel when screwing in the fastening bolts.

**60** Screw in the wheel bolts. Use wheel impact socket #17.



**61** Lower the car and working in a cross order, tighten the wheel bolts. Use wheel impact socket #17. Use a torque wrench. Tighten it to 120 nm torque.

**62** Remove the jacks and chocks.



**WELL DONE!** 

**VIEW MORE TUTORIALS**

# AUTODOC – TOP QUALITY AND AFFORDABLE CAR PARTS ONLINE

**AUTODOC MOBILE APP: GREAT DEALS AND CONVENIENT SHOPPING**



**+ AUTODOC**

GET IT ON  
**Google Play**

 Download on the  
**App Store**

**Download**

**A GREAT SELECTION OF SPARE PARTS FOR YOUR CAR**

**SHOCK ABSORBERS: A WIDE SELECTION**

## **DISCLAIMER:**

The document contains only general recommendations that may be useful for you when you perform repair or replacement work. AUTODOC shall not be liable for any loss, injury, damage of property occurring in the repair or replacement process due to incorrect use or misinterpretation of the provided information.

AUTODOC shall not be liable for any possible mistakes and uncertainties in this guide. The information provided is for information purposes only and cannot replace advice from specialists.

AUTODOC shall not be liable for incorrect or hazardous usage of equipment, tools and car parts. AUTODOC strongly recommends to be careful and observe the safety rules when performing repair or replacement works. Remember: usage of low quality auto parts does not guarantee you the appropriate level of road safety.

© Copyright 2023 – All the contents of this website, in particular texts, photographs and graphics, are protected by copyright. All rights, including reproduction, publication, editing and translation rights, are reserved by AUTODOC SE.