



How to change rear
wheel bearing on **VW 412**
Variant – replacement
guide

SIMILAR VIDEO TUTORIAL



This video shows the replacement procedure of a similar car part on another vehicle

Important!

This replacement procedure can be used for:
VW 412 Variant 1.7, VW 412 Variant 1.8 E,LE

The steps may slightly vary depending on the car design.

This tutorial was created based on the replacement procedure for a similar car part on: VW GOLF III (1H1) 1.9 D

REPLACEMENT: WHEEL BEARING – VW 412 VARIANT.
TOOLS YOU'LL NEED:



- Wire brush
- All-purpose cleaning spray
- Multipurpose grease
- Copper grease
- Torque wrench
- Drive socket # 24
- Wheel impact socket #17
- Bush and bearing driver set
- Pin punch
- Tap wrench
- Hammer
- Rubber mallet
- Flat Screwdriver
- Crow bar
- Wheel chock

Buy tools

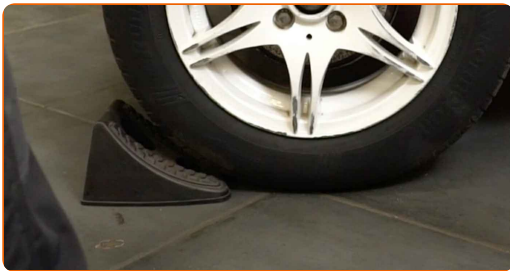
Replacement: wheel bearing – VW 412 Variant. AUTODOC recommends:

- Do not re-use the bearing assembly of your VW 412 Variant car.
- The wheel hub bearing replacement procedure is identical for both wheels on the same axle.
- All work should be done with the engine stopped.

**REPLACEMENT: WHEEL BEARING – VW 412 VARIANT.
RECOMMENDED SEQUENCE OF STEPS:**

1

Secure the wheels with chocks.



2

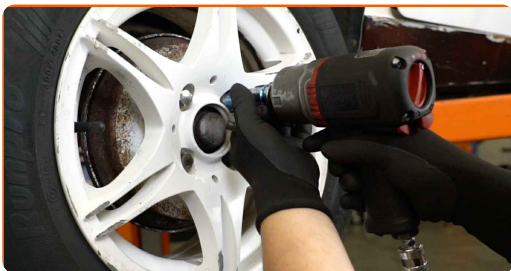
Loosen the wheel mounting bolts. Use wheel impact socket #17.



3

Raise the rear of the car and secure on supports.

4 Unscrew the wheel bolts.



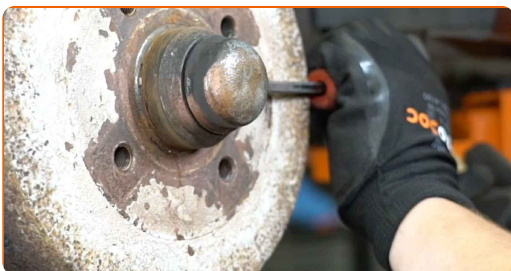
AUTODOC recommends:

- Warning! To avoid injury, hold the wheel while unscrewing the fastening bolts. VW 412 Variant

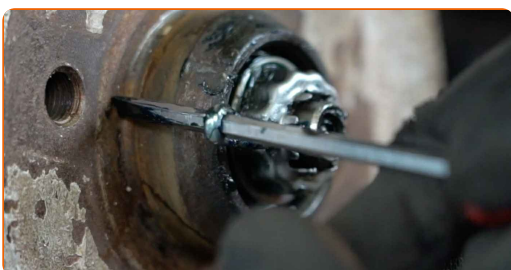
5 Remove the wheel.



6 Remove the wheel hub nut cap. Use a crowbar. Use a hammer.

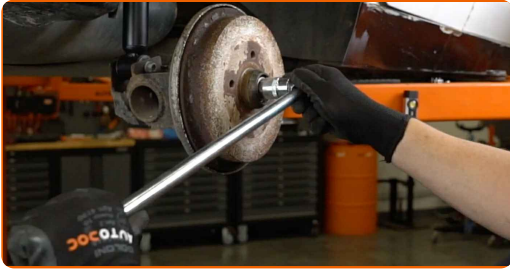


7 Remove the cotter pin securing the hub nut. Use a crowbar.



8

Unscrew the hub nut. Use a drive socket #24. Use a tap wrench.



9

Remove the brake drum assembled with the wheel hub bearing. Use a flat screwdriver.

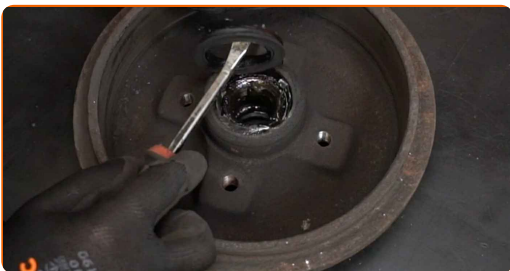


Replacement: wheel bearing – VW 412 Variant. Tip:

- Examine the brake drum. Replace it if necessary.

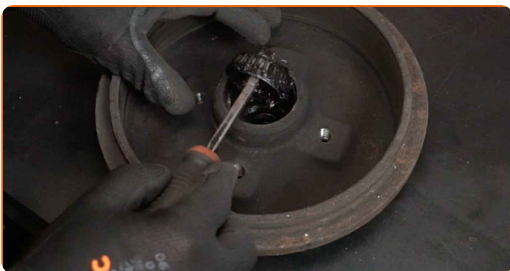
10

Remove the wheel hub bearing retaining ring. Use a crowbar.



11

Remove the hub bearing mounting. Use a crowbar.



12 Remove the inner race of the wheel bearing from the brake drum. Use a pin punch. Use a hammer.



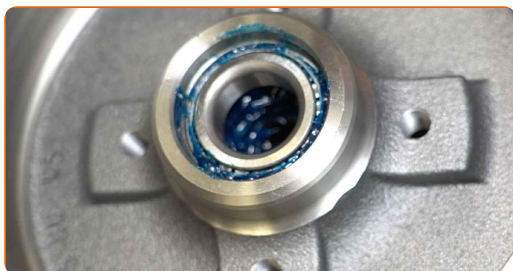
13 Install the new inner race of the wheel bearing into the brake drum. Use a bush and bearing driver set. Use a hammer.



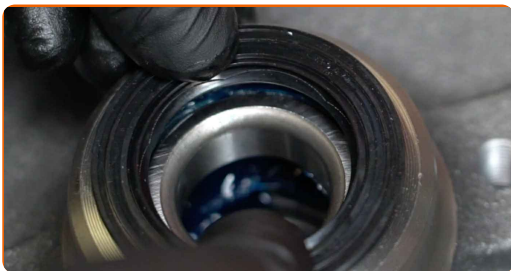
14 Treat the inner race and the wheel bearing. Use a multipurpose grease.



15 Install a new hub bearing and secure it.



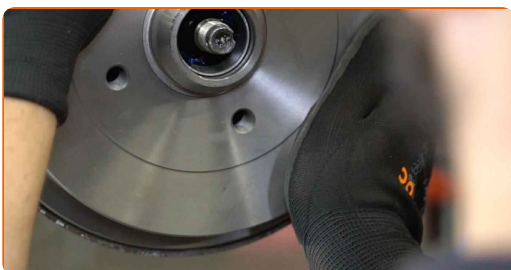
16 Install the wheel hub bearing retaining ring. Use a bush and bearing driver set. Use a hammer.



17 Clean the stub axle. Use all-purpose cleaning spray. Use WD-40 spray.



18 Install the brake drum assembled with the wheel hub bearing.

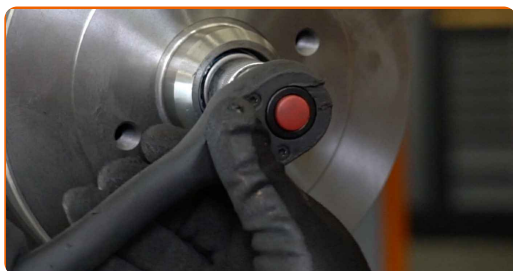


19 Apply special grease to the bearing assembly mounting seat. Use a multipurpose grease.



20

Tighten the wheel hub nut. Use a drive socket #24. Use a ratchet wrench.



21

Install the wheel.

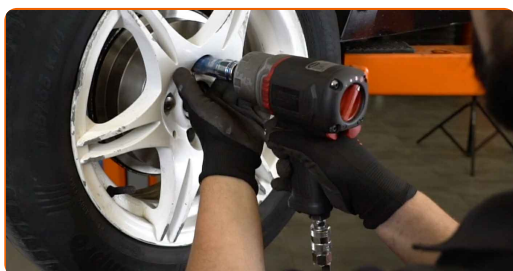


AUTODOC recommends:

- Warning! To avoid injury, hold the wheel while screwing in the fastening bolts on the car. VW 412 Variant

22

Screw in the wheel bolts. Use wheel impact socket #17.



Replacement: wheel bearing – VW 412 Variant. Professionals recommend:

- Align the brake drum.

23 Loosen the wheel mounting bolts. Use wheel impact socket #17.



24 Raise the rear of the car and secure on supports.

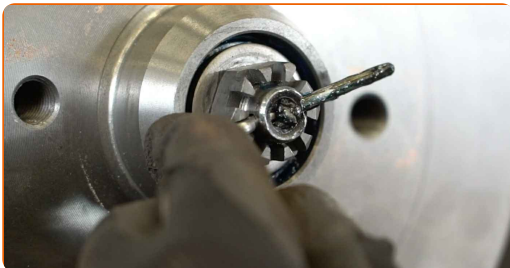
25 Unscrew the wheel bolts.

AUTODOC recommends:

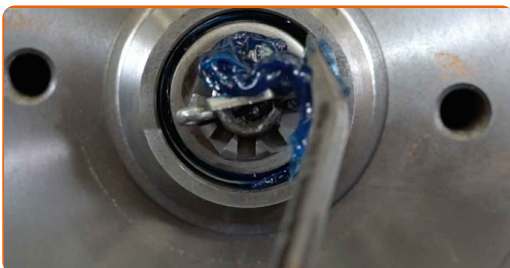
- Warning! To avoid injury, hold the wheel while unscrewing the fastening bolts. VW 412 Variant

26 Remove the wheel.

27 Install a new hub nut cotter pin.



28 Treat the wheel hub nut. Use a multipurpose grease.



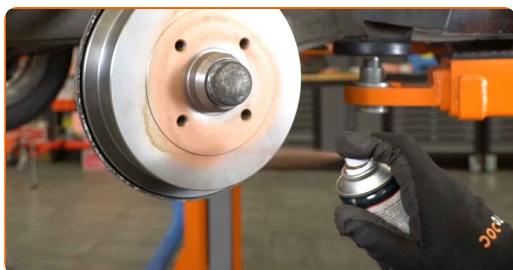
29 Install the cap of the hub nut. Use a rubber mallet.



30 Clean the wheel rim mounting seat. Use a wire brush.



31 Treat the surface where the wheel rim contacts the brake drum. Use copper grease.



32 Install the wheel.



33 Screw in the wheel bolts. Use wheel impact socket #17.



AUTODOC recommends:

- Warning! To avoid injury, hold the wheel while screwing in the fastening bolts on the car. VW 412 Variant

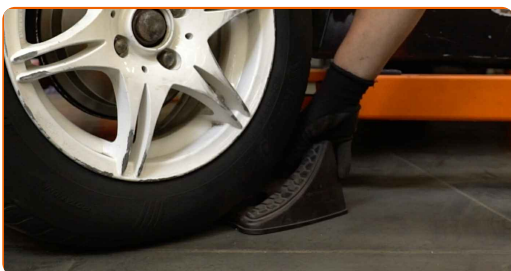
34

Lower the car and working in a cross order, tighten the wheel bolts. Use wheel impact socket #17. Use a torque wrench. Tighten it to 110 nm torque.



35

Remove the jacks and chocks.



WELL DONE! 

[VIEW MORE TUTORIALS](#)

AUTODOC – TOP QUALITY AND AFFORDABLE CAR PARTS ONLINE

AUTODOC MOBILE APP: GREAT DEALS AND CONVENIENT SHOPPING



+ AUTODOC

GET IT ON
Google Play

 Download on the
App Store

Download

A GREAT SELECTION OF SPARE PARTS FOR YOUR CAR

WHEEL BEARING: A WIDE SELECTION

DISCLAIMER:

The document contains only general recommendations that may be useful for you when you perform repair or replacement work. AUTODOC shall not be liable for any loss, injury, damage of property occurring in the repair or replacement process due to incorrect use or misinterpretation of the provided information.

AUTODOC shall not be liable for any possible mistakes and uncertainties in this guide. The information provided is for information purposes only and cannot replace advice from specialists.

AUTODOC shall not be liable for incorrect or hazardous usage of equipment, tools and car parts. AUTODOC strongly recommends to be careful and observe the safety rules when performing repair or replacement works. Remember: usage of low quality auto parts does not guarantee you the appropriate level of road safety.

© Copyright 2022 – All the contents of this website, in particular texts, photographs and graphics, are protected by copyright. All rights, including reproduction, publication, editing and translation rights, are reserved by AUTODOC GmbH.