



How to change pollen
filter on **VOLVO XC90 I**
(275) – replacement
guide

SIMILAR VIDEO TUTORIAL



This video shows the replacement procedure of a similar car part on another vehicle

i Important!

This replacement procedure can be used for:

VOLVO XC90 I (275) 2.4 D5, VOLVO XC90 I (275) 3.2 AWD, VOLVO XC90 I (275) 2.5 T AWD, VOLVO XC90 I (275) 2.9 T6, VOLVO XC90 I (275) 4.4 V8, VOLVO XC90 I (275) 2.4 D3 / D5, VOLVO XC90 I (275) 3.2, VOLVO XC90 I (275) 2.4 D5 AWD, VOLVO XC90 I (275) 2.5, VOLVO XC90 I (275) 2.5 AWD, VOLVO XC90 I (275) D5 AWD

The steps may slightly vary depending on the car design.

This tutorial was created based on the replacement procedure for a similar car part on: VOLVO V70 II (285) 2.0 T

REPLACEMENT: POLLEN FILTER – VOLVO XC90 I (275).
TOOLS YOU NEED:



- Torx bit T20
- Ratchet wrench
- Phillips screwdriver
- Plastic trim tool

Buy tools

Replacement: pollen filter – VOLVO XC90 I (275). AUTODOC experts recommend:

- Replace the cabin filter at least once every six months, in early spring and autumn seasons.
- Follow the terms, recommendations and requirements of the part operation provided by the manufacturer.
- If the air flow into the cabin has sharply reduced, replace the filter before a scheduled maintenance.
- Please note: all work on the car – VOLVO XC90 I (275) – should be done with the engine switched off.

CARRY OUT REPLACEMENT IN THE FOLLOWING ORDER:

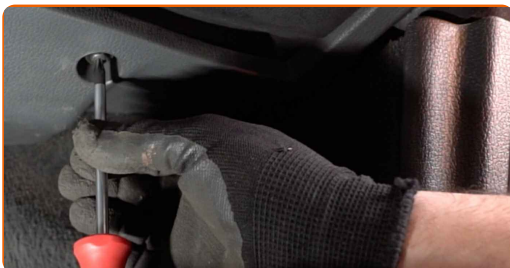
1

Move the passenger seat fully backwards.



2

Unscrew the fasteners of the passenger side kick panel. Use a Phillips screwdriver.



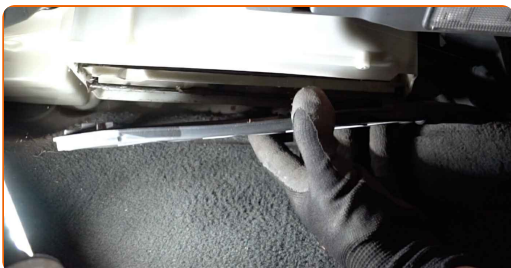
3 Remove the protective cover under the glove box. Use a plastic trim tool.



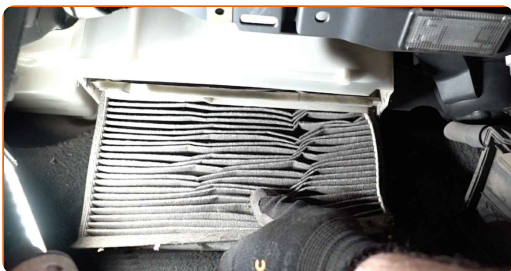
4 Unscrew the fasteners of the cabin filter housing cover. Use Torx T20. Use a ratchet wrench.



5 Remove the cabin filter housing cover.



6 Remove the cabin filter.

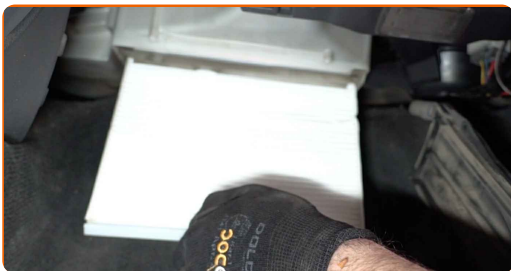


Replacement: pollen filter – VOLVO XC90 I (275). Tip:

- Do not attempt to clean and reuse the filter - it will affect the quality of air cleaning inside the car.

7

Install the cabin filter to its mounting seat.



Replacement: pollen filter – VOLVO XC90 I (275). Tip from AUTODOC experts:

- Check out the correct location of the filter element. Do not skew.
- Follow the air flow direction arrow on the filter.
- VOLVO XC90 I (275) – It's important to only use high-quality filters.

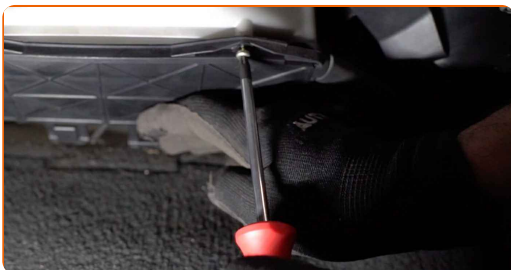
8

Reinstall the cabin filter housing cover.

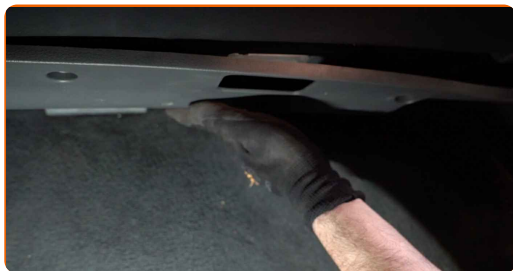


9

Screw in the fasteners of the cabin filter housing cover. Use Torx T20. Use a ratchet wrench.



- 10** Install and secure the protective cover under the glove box.



AUTODOC recommends:

- Replacement: pollen filter – VOLVO XC90 I (275). Do not use excessive force during installation. This may damage the fasteners.

- 11** Screw in the fasteners of the passenger side kick panel. Use a Phillips screwdriver.



- 12** Return the passenger seat to its initial position.



- 13** Switch on the ignition.

- 14** Switch on the air conditioning system. This is necessary in order to make sure that the component operates properly.

15

Switch off the ignition.

WELL DONE! 

VIEW MORE TUTORIALS

AUTODOC – TOP QUALITY AND AFFORDABLE CAR PARTS ONLINE

AUTODOC MOBILE APP: GREAT DEALS AND CONVENIENT SHOPPING



+ AUTODOC

GET IT ON
Google Play

Download on the
App Store

Download

A GREAT SELECTION OF SPARE PARTS FOR YOUR CAR

POLLEN FILTER: A WIDE SELECTION

DISCLAIMER:

The document contains only general recommendations that may be useful for you when you perform repair or replacement work. AUTODOC shall not be liable for any loss, injury, damage of property occurring in the repair or replacement process due to incorrect use or misinterpretation of the provided information.

AUTODOC shall not be liable for any possible mistakes and uncertainties in this guide. The information provided is for information purposes only and cannot replace advice from specialists.

AUTODOC shall not be liable for incorrect or hazardous usage of equipment, tools and car parts. AUTODOC strongly recommends to be careful and observe the safety rules when performing repair or replacement works. Remember: usage of low quality auto parts does not guarantee you the appropriate level of road safety.

© Copyright 2023 – All the contents of this website, in particular texts, photographs and graphics, are protected by copyright. All rights, including reproduction, publication, editing and translation rights, are reserved by AUTODOC SE.