



How to change pollen
filter on **VOLVO XC70 II**
Estate (136) –
replacement guide

SIMILAR VIDEO TUTORIAL



This video shows the replacement procedure of a similar car part on another vehicle

Important!

This replacement procedure can be used for:

VOLVO XC70 II Estate (136) 3.2 AWD, VOLVO XC70 II Estate (136) 3.0 T6 AWD, VOLVO XC70 II Estate (136) 2.4 D5 AWD, VOLVO XC70 II Estate (136) 2.0 D3, VOLVO XC70 II Estate (136) 2.4 D / D4 AWD, VOLVO XC70 II Estate (136) 2.4 D, VOLVO XC70 II Estate (136) 2.4 D4 AWD, VOLVO XC70 II Estate (136) 2.0 D4, VOLVO XC70 II Estate (136) 2.0 T5, VOLVO XC70 II Estate (136) 2.5 T5, VOLVO XC70 II Estate (136) T6 AWD, VOLVO XC70 II Estate (136) D5 AWD, VOLVO XC70 II Estate (136) T6 Polestar AWD

The steps may slightly vary depending on the car design.

This tutorial was created based on the replacement procedure for a similar car part on: VOLVO V70 III (135) 2.0 FlexiFuel

REPLACEMENT: POLLEN FILTER – VOLVO XC70 II
ESTATE (136). TOOLS YOU MIGHT NEED:



- Torx bit T25
- Drive socket # 8
- Ratchet wrench

Buy tools

Replacement: pollen filter – VOLVO XC70 II Estate (136). AUTODOC recommends:

- Replace the cabin filter at least once every six months, in early spring and autumn seasons.
- Follow the terms, recommendations and requirements of the part operation provided by the manufacturer.
- If the air flow into the cabin has sharply reduced, replace the filter before a scheduled maintenance.
- All work should be done with the engine stopped.

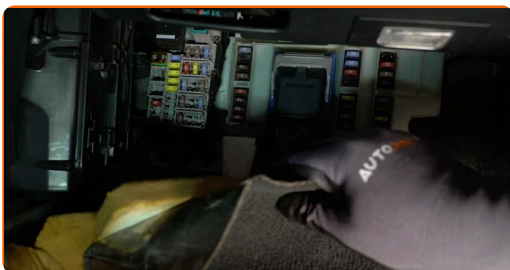
REPLACEMENT: POLLEN FILTER – VOLVO XC70 II ESTATE (136). USE THE FOLLOWING PROCEDURE:

1 Open the car door.

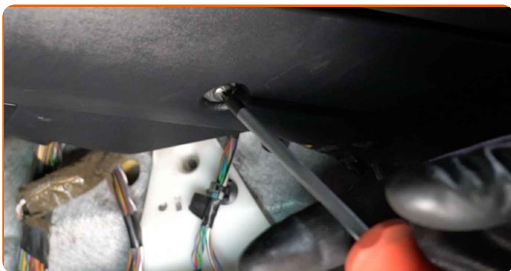
2 Remove the floor mat from the passenger side.



3 Bend back the floor liner on the passenger's side.



4 Unscrew the fasteners of the passenger side kick panel. Use Torx T25.



5 Move the lower glove box cover aside.



6 Detach the fuse box and move it aside.



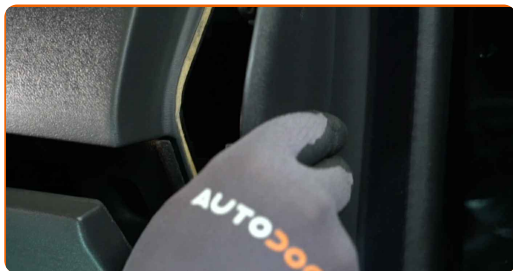
7 Open the glove box.



8 Unscrew the glove box mounting screws. Use Torx T25. Use a drive socket #8. Use a ratchet wrench.



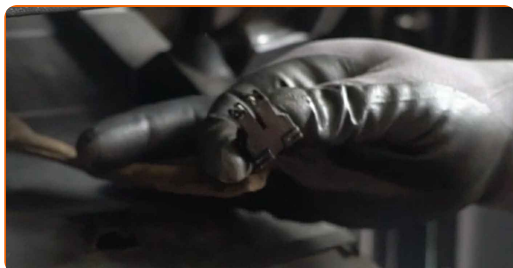
9 Remove the side panel on the passenger side.



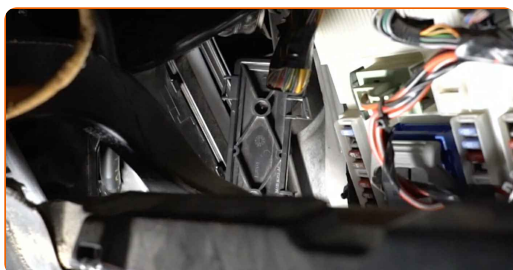
10 Remove the glove box.



11 Detach the glove box connectors.



12 Remove the cabin filter housing cover.



13 Remove the cabin filter.

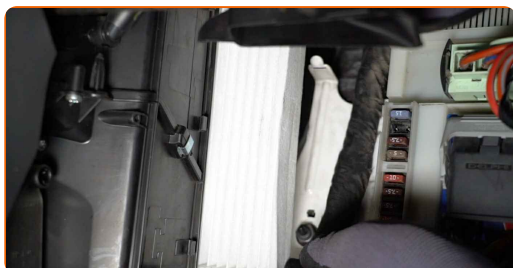


Replacement: pollen filter – VOLVO XC70 II Estate (136). Tip from AUTODOC experts:

- Do not attempt to clean and reuse the filter – this will reduce the quality of cabin air filtration.

14

Install a new cabin filter according to the air flow direction mark.



AUTODOC recommends:

- Look at the marks on the new filter. They may indicate the air flow direction, which should be considered when installing the part.

15

Install the cabin filter housing cover.



16 Reattach the glove box connectors.



17 Install the glove box.



18 Screw in the glove box mounting screws. Use Torx T25. Use a drive socket #8. Use a ratchet wrench.



19 Install the side panel on the passenger side.



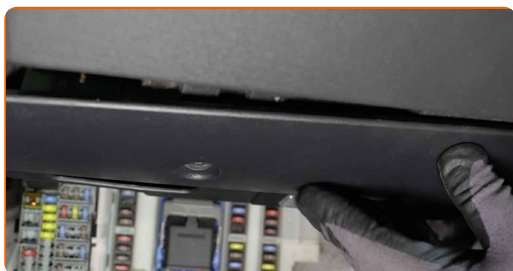
20 Close the glove box.



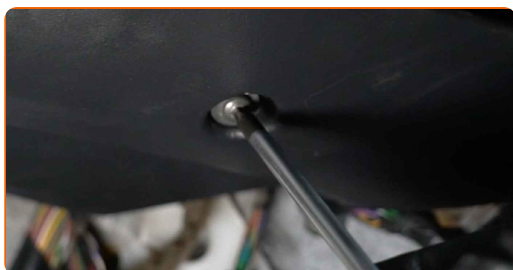
21 Reinstall the fuse box.



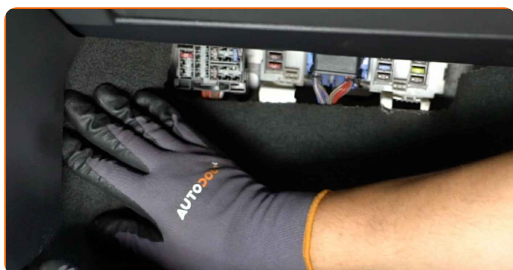
22 Install and secure the cover under the glove box.



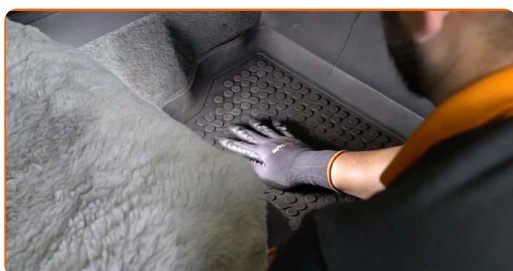
23 Screw in the fasteners of the passenger side kick panel. Use Torx T25.



24 Put the passenger's side floor liner back.



25 Return the floor mat to the original position.



- 26** Close the car door.
- 27** Switch on the ignition.
- 28** Switch on the air conditioning system. This is necessary in order to make sure that the component operates properly.
- 29** Switch off the ignition.

WELL DONE! 

[VIEW MORE TUTORIALS](#)

AUTODOC – TOP QUALITY AND AFFORDABLE CAR PARTS ONLINE

AUTODOC MOBILE APP: GREAT DEALS AND CONVENIENT SHOPPING



+ AUTODOC

GET IT ON
Google Play

 Download on the
App Store

Download

A GREAT SELECTION OF SPARE PARTS FOR YOUR CAR

POLLEN FILTER: A WIDE SELECTION

DISCLAIMER:

The document contains only general recommendations that may be useful for you when you perform repair or replacement work. AUTODOC shall not be liable for any loss, injury, damage of property occurring in the repair or replacement process due to incorrect use or misinterpretation of the provided information.

AUTODOC shall not be liable for any possible mistakes and uncertainties in this guide. The information provided is for information purposes only and cannot replace advice from specialists.

AUTODOC shall not be liable for incorrect or hazardous usage of equipment, tools and car parts. AUTODOC strongly recommends to be careful and observe the safety rules when performing repair or replacement works. Remember: usage of low quality auto parts does not guarantee you the appropriate level of road safety.

© Copyright 2022 – All the contents of this website, in particular texts, photographs and graphics, are protected by copyright. All rights, including reproduction, publication, editing and translation rights, are reserved by AUTODOC GmbH.