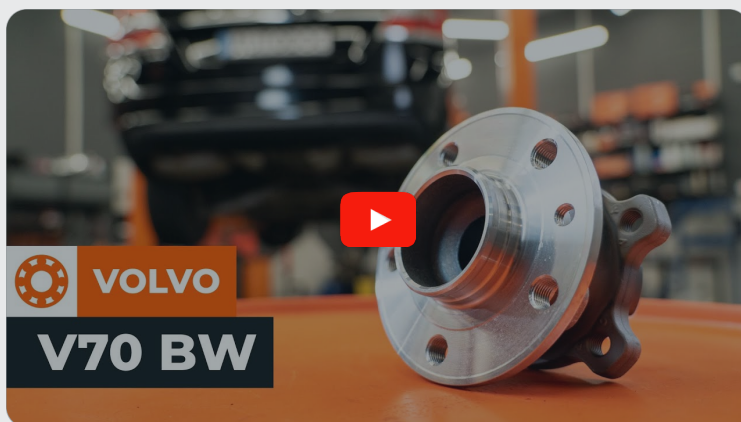




How to change rear
wheel bearing on **VOLVO**
S60 II (134) –
replacement guide

SIMILAR VIDEO TUTORIAL



This video shows the replacement procedure of a similar car part on another vehicle

Important!

This replacement procedure can be used for:

VOLVO S60 II (134) 1.6 T3, VOLVO S60 II (134) 1.6 T4, VOLVO S60 II (134) 2.0 T,
VOLVO S60 II (134) 2.0 T5, VOLVO S60 II (134) 2.0 D3, VOLVO S60 II (134) 2.4 D5,
VOLVO S60 II (134) 2.0 D4

The steps may slightly vary depending on the car design.

This tutorial was created based on the replacement procedure for a similar car part on: VOLVO V70 III (135) 2.0 FlexiFuel

**REPLACEMENT: WHEEL BEARING – VOLVO S60 II (134).
LIST OF THE TOOLS YOU'LL NEED:**



- Wire brush
- WD-40 spray
- All-purpose cleaning spray
- Brake cleaner
- Ceramic grease
- Torque wrench
- Combination spanner #15
- Drive socket # 13
- Drive socket # 15
- Torx bit T25
- Torx bit T50
- Torx bit T55
- Wheel impact socket #19
- Ratchet wrench
- Tap wrench
- Hammer
- Impact screwdriver
- Wheel chock

Buy tools

Replacement: wheel bearing – VOLVO S60 II (134). AUTODOC recommends:

- Do not re-use the bearing assembly of your VOLVO S60 II (134) car.
- The wheel hub bearing replacement procedure is identical for both wheels on the same axle.
- All work should be done with the engine stopped.

REPLACEMENT: WHEEL BEARING – VOLVO S60 II (134). USE THE FOLLOWING PROCEDURE:

1 Secure the wheels with chocks.

2 Loosen the wheel bolts. Use wheel impact socket #19. Use a tap wrench.

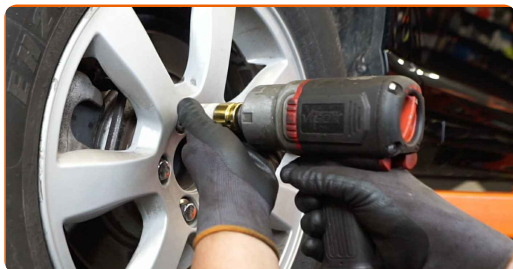


3 Raise the car.

AUTODOC recommends:

- If you are using a jack, make sure it rests on a flat surface without any unevenness.
- Be sure to additionally secure the car with jack stands.

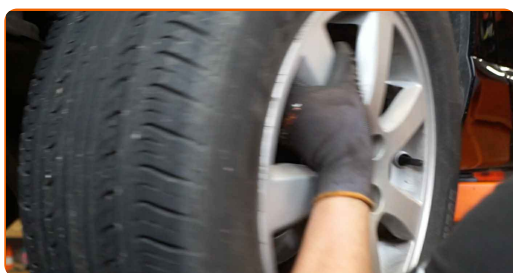
4 Unscrew the wheel bolts.



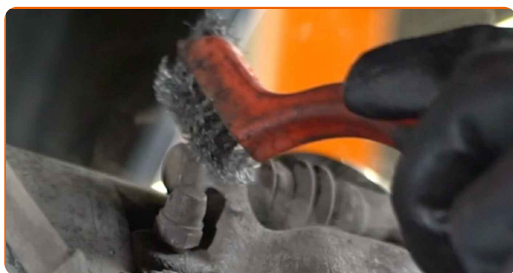
Replacement: wheel bearing – VOLVO S60 II (134). Tip:

- To avoid injury, hold up the wheel when unscrewing the bolts.

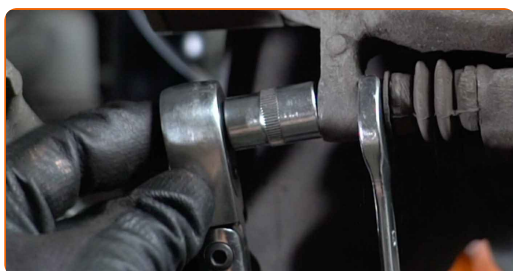
5 Remove the wheel.



6 Clean the brake caliper fasteners. Use a wire brush. Use WD-40 spray.



7 Unscrew the brake caliper fasteners. Use a combination spanner #15. Use a drive socket #13. Use a ratchet wrench.



8 Remove the fastening bolts.



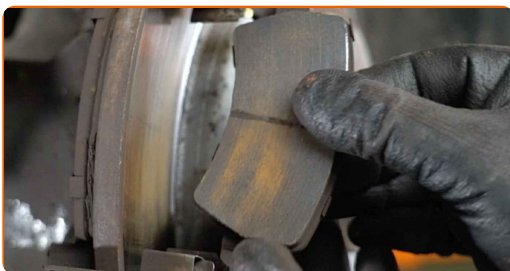
9 Remove the brake caliper.



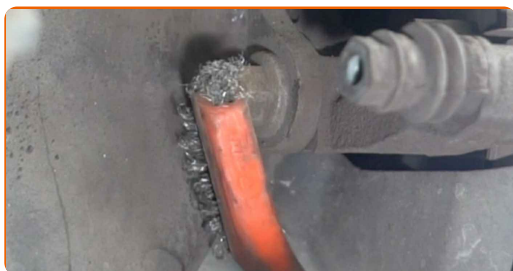
Replacement: wheel bearing – VOLVO S60 II (134). AUTODOC experts recommend:

- Tie the caliper to the suspension or to the body with a wire without disconnecting from the brake hose to prevent depressurization of the brake system.
- Make sure that the brake caliper is not hanging on the brake hose.
- Don't press the brake pedal after the brake caliper has been removed. As a result, the piston can fall out from the brake cylinder, and brake fluid leakage and depressurization of the system may occur.

10 Remove the brake pads.



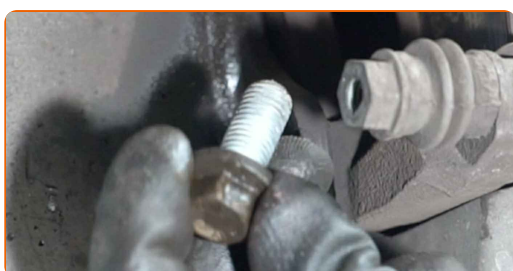
11 Clean the brake caliper bracket fasteners. Use a wire brush. Use WD-40 spray.



12 Unscrew the brake caliper bracket fasteners. Use a drive socket #15. Use a ratchet wrench.



13 Remove the fastening bolts.



14 Remove the brake caliper bracket.



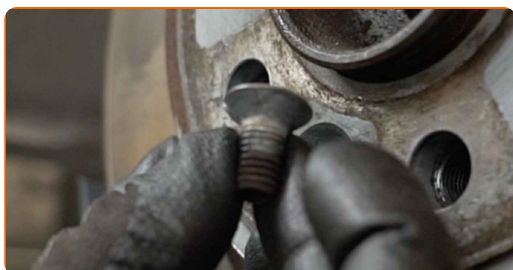
15 Clean the brake disc fastener. Use a wire brush. Use WD-40 spray.



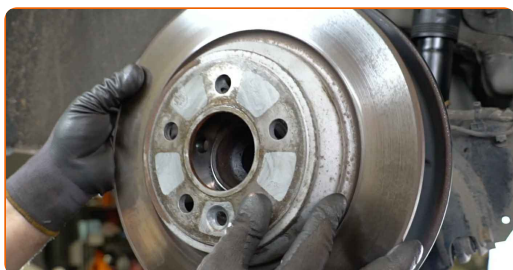
16 Unscrew the brake disc fasteners. Use Torx T50. Use an impact screwdriver. Use a hammer.



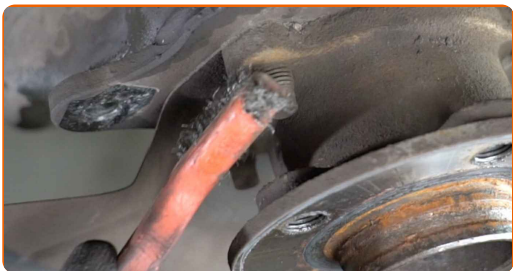
17 Remove the fastening bolt.



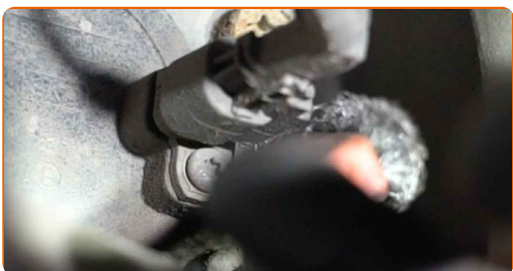
18 Remove the brake disc.



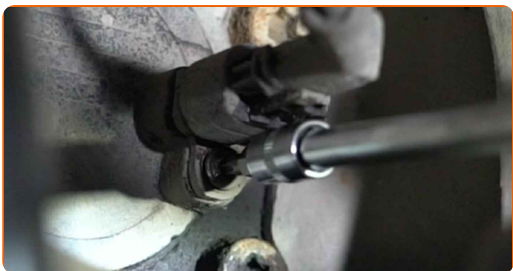
19 Clean the wheel hub fasteners. Use a wire brush. Use WD-40 spray.



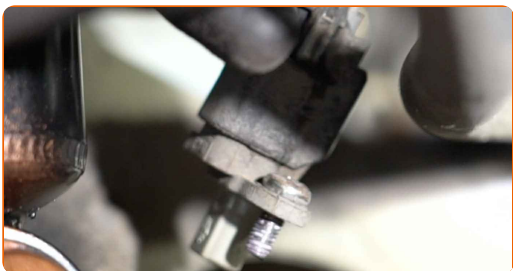
20 Clean the ABS sensor fastener. Use a wire brush. Use WD-40 spray.



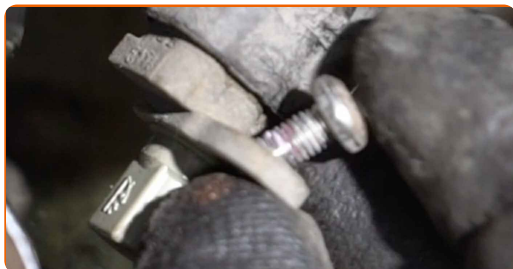
21 Unscrew the ABS sensor fastener. Use Torx T25. Use a ratchet wrench.



22 Disconnect the ABS sensor.



23 Remove the fastening bolt.



24 Clean the wheel hub fasteners. Use a wire brush. Use WD-40 spray.



25 Unscrew the wheel hub fasteners. Use Torx T55. Use a ratchet wrench.



26 Remove the fastening bolts.



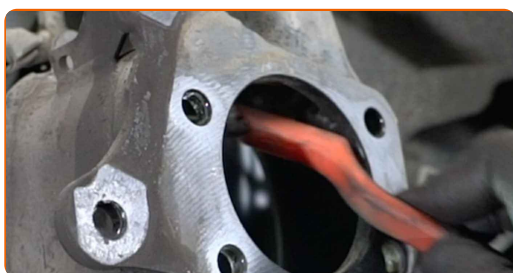
27 Remove the hub and the bearing together, since they are made as an assembly.



28 Remove the brake disc cover.



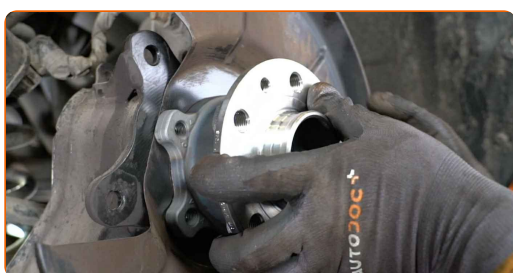
29 Clean the wheel hub mounting seat. Use a wire brush.



30 Install the brake disc cover.



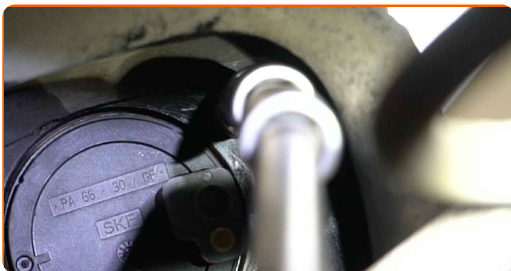
31 Install the new wheel hub together with the bearing.



32 Install the fastening bolts.



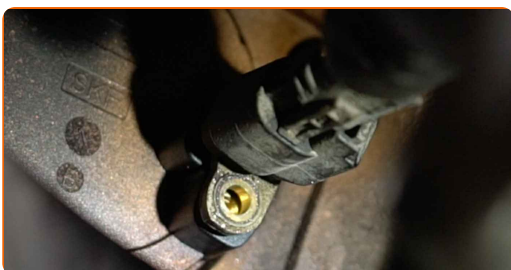
33 Tighten the wheel hub fasteners. Use Torx T55. Use a torque wrench. Tighten it to 110 Nm torque.



34 Clean the ABS sensor. Use all-purpose cleaning spray.

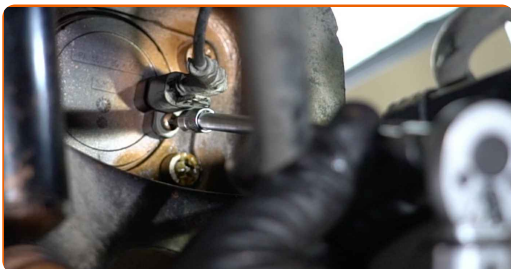


35 Connect the ABS sensor.



36 Install the fastening bolt.

37 Tighten the ABS sensor fastener. Use Torx T25. Use a torque wrench. Tighten it to 5 Nm torque.



38 Treat the hub where it contacts the brake disk. Use ceramic grease.

39 Install the brake disc.



40 Install the fastening bolt.

41 Tighten the brake disc fasteners. Use Torx T50. Use a torque wrench. Tighten it to 15 Nm torque.



42 Clean the brake caliper bracket of dirt and dust. Use a wire brush. Use a brake cleaner.

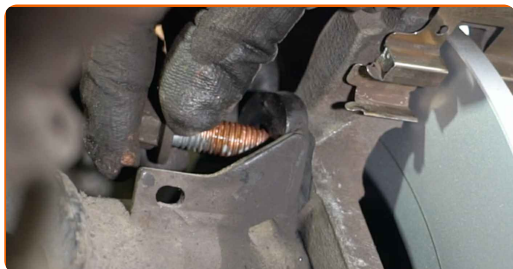
Replacement: wheel bearing – VOLVO S60 II (134). Tip from AUTODOC:

- Check the brake caliper bracket, brake caliper guide pins and boots. Clean them. Replace, if necessary.

43 Install the brake caliper bracket.



44 Install the fastening bolts.



45 Tighten the brake caliper bracket fasteners. Use a drive socket #15. Use a torque wrench. Tighten it to 110 Nm torque.



46 Install the brake pads.



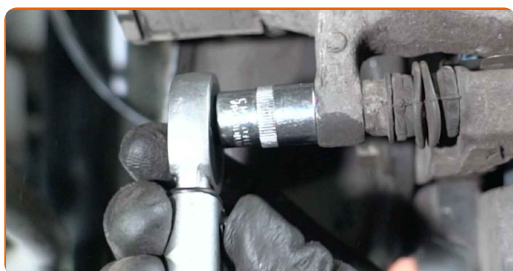
47 Install the brake caliper and fasten it.



48 Install the fastening bolts.



- 49 Tighten the brake caliper fasteners. Use a combination spanner #15. Use a drive socket #13. Use a torque wrench. Tighten it to 35 Nm torque.



- 50 Clean the wheel rim mounting seat. Use a wire brush.

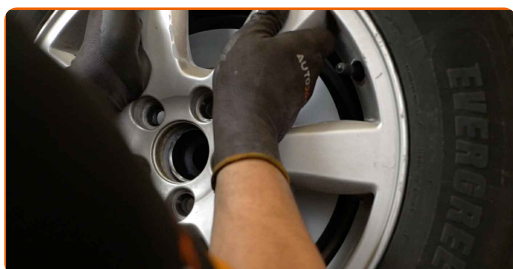


- 51 Treat the surface where the brake disc contacts the wheel rim. Use ceramic grease.

- 52 Clean the brake disk surface. Use a brake cleaner.



- 53 Install the wheel.

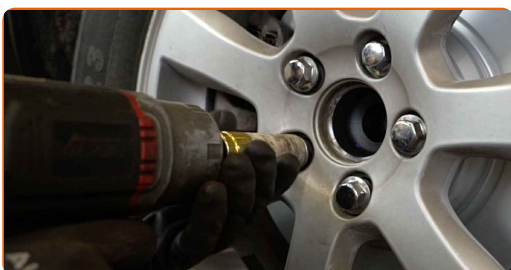


AUTODOC recommends:

- Important! Hold the wheel while screwing in the fastening bolts. VOLVO S60 II (134)

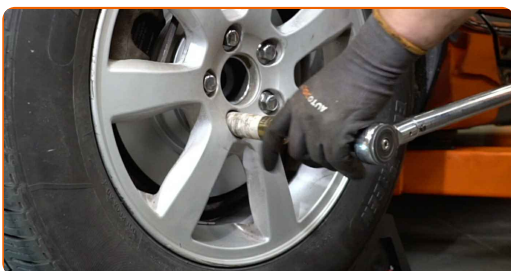
54

Screw in the wheel bolts. Use wheel impact socket #19. Use a ratchet wrench.



55

Lower the car and working in a cross order, tighten the wheel bolts. Use wheel impact socket #19. Use a torque wrench. Tighten it to 140 Nm torque.



56

Remove the jacks and chocks.



WELL DONE! 

VIEW MORE TUTORIALS

AUTODOC – TOP QUALITY AND AFFORDABLE CAR PARTS ONLINE

AUTODOC MOBILE APP: GREAT DEALS AND CONVENIENT SHOPPING



+ AUTODOC

GET IT ON
Google Play

Download on the
App Store

Download

A GREAT SELECTION OF SPARE PARTS FOR YOUR CAR

WHEEL BEARING: A WIDE SELECTION

DISCLAIMER:

The document contains only general recommendations that may be useful for you when you perform repair or replacement work. AUTODOC shall not be liable for any loss, injury, damage of property occurring in the repair or replacement process due to incorrect use or misinterpretation of the provided information.

AUTODOC shall not be liable for any possible mistakes and uncertainties in this guide. The information provided is for information purposes only and cannot replace advice from specialists.

AUTODOC shall not be liable for incorrect or hazardous usage of equipment, tools and car parts. AUTODOC strongly recommends to be careful and observe the safety rules when performing repair or replacement works. Remember: usage of low quality auto parts does not guarantee you the appropriate level of road safety.

© Copyright 2022 – All the contents of this website, in particular texts, photographs and graphics, are protected by copyright. All rights, including reproduction, publication, editing and translation rights, are reserved by AUTODOC GmbH.