



How to change pollen
filter on **VOLVO S40 II**
(MS, 544) – replacement
guide

SIMILAR VIDEO TUTORIAL



This video shows the replacement procedure of a similar car part on another vehicle

Important!

This replacement procedure can be used for:

VOLVO S40 II (MS, 544) 2.0 D3, VOLVO S40 II (MS, 544) 2.0 D4, VOLVO S40 II (MS, 544) 1.6 D2, VOLVO S40 II (MS, 544) 2.0 F, VOLVO S40 II (MS, 544) 2.4, VOLVO S40 II (MS, 544) 2.5 T5, VOLVO S40 II (MS, 544) 2.0 D, VOLVO S40 II (MS, 544) 2.5 T5 AWD, VOLVO S40 II (MS, 544) 1.8, VOLVO S40 II (MS, 544) 1.6, VOLVO S40 II (MS, 544) 1.6 D, VOLVO S40 II (MS, 544) 2.0, VOLVO S40 II (MS, 544) 2.4 D5, VOLVO S40 II (MS, 544) 1.8 FlexFuel, VOLVO S40 II (MS, 544) 2.0 CDI, (+ 1)

The steps may slightly vary depending on the car design.

This tutorial was created based on the replacement procedure for a similar car part on: VOLVO V50 (MW, 545) 1.6 D

REPLACEMENT: POLLEN FILTER – VOLVO S40 II (MS,
544). TOOLS YOU NEED:



• Impact socket №10

• Ratchet wrench

[Buy tools](#)

Replacement: pollen filter – VOLVO S40 II (MS, 544). AUTODOC experts recommend:

- Replace the cabin filter at least once every six months, in early spring and autumn seasons.
- Follow the terms, recommendations and requirements of the part operation provided by the manufacturer.
- If the air flow into the cabin has sharply reduced, replace the filter before a scheduled maintenance.
- All work should be done with the engine stopped.

REPLACEMENT: POLLEN FILTER – VOLVO S40 II (MS, 544). USE THE FOLLOWING PROCEDURE:

1 Unscrew the fastener of the accelerator pedal and move it aside. Use a drive socket #10. Use a ratchet wrench.



2 Move the car interior lining aside.



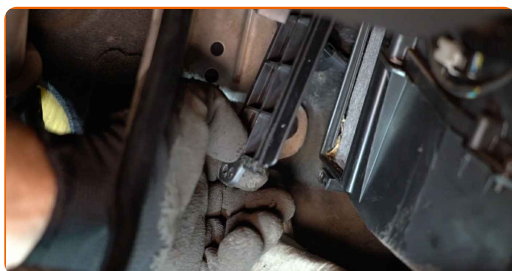
3

Return the car interior lining to its initial position.



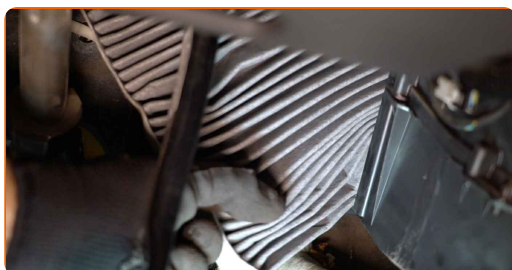
4

Remove the cabin filter housing cover.



5

Remove the cabin filter.

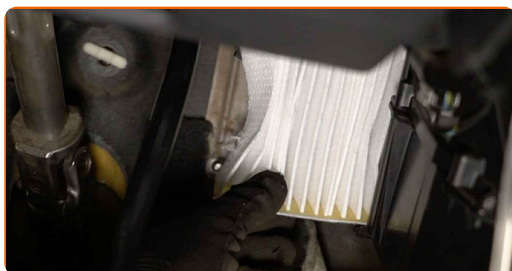


Replacement: pollen filter – VOLVO S40 II (MS, 544). Tip from AUTODOC experts:

- Do not attempt to clean and reuse the filter - it will affect the quality of air cleaning inside the car.

6

Install the cabin filter to its mounting seat.



AUTODOC recommends:

- Replacement: pollen filter – VOLVO S40 II (MS, 544). Be sure to position the filtering element correctly. Avoid misalignment.
- Follow the air flow direction arrow on the filter.
- Attention! Use quality filters – VOLVO S40 II (MS, 544).

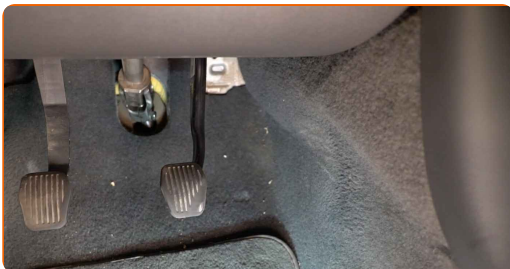
7

Reinstall the cabin filter housing cover.



8

Return the car interior lining to its initial position.



9

Attach the accelerator pedal connector.



10

Return the accelerator pedal to its initial position and screw in its fastener. Use a drive socket #10.



11

Switch on the ignition.

12

Switch on the air conditioning system. This is necessary in order to make sure that the component operates properly.

13

Switch off the ignition.

WELL DONE! 👍

[VIEW MORE TUTORIALS](#)

AUTODOC – TOP QUALITY AND AFFORDABLE CAR PARTS ONLINE

AUTODOC MOBILE APP: GREAT DEALS AND CONVENIENT SHOPPING

AUTODOC

GET IT ON
Google Play

Download on the
App Store

Download

A GREAT SELECTION OF SPARE PARTS FOR YOUR CAR

POLLEN FILTER: A WIDE SELECTION

(i) DISCLAIMER:

The document contains only general recommendations that may be useful for you when you perform repair or replacement work. AUTODOC shall not be liable for any loss, injury, damage of property occurring in the repair or replacement process due to incorrect use or misinterpretation of the provided information.

AUTODOC shall not be liable for any possible mistakes and uncertainties in this guide. The information provided is for information purposes only and cannot replace advice from specialists.

AUTODOC shall not be liable for incorrect or hazardous usage of equipment, tools and car parts. AUTODOC strongly recommends to be careful and observe the safety rules when performing repair or replacement works. Remember: usage of low quality auto parts does not guarantee you the appropriate level of road safety.

© Copyright 2022 – All the contents of this website, in particular texts, photographs and graphics, are protected by copyright. All rights, including reproduction, publication, editing and translation rights, are reserved by AUTODOC GmbH.