



How to change right
engine mounts on
VAUXHALL Vivaro
Platform / Chassis (X83)
– replacement guide

SIMILAR VIDEO TUTORIAL



This video shows the replacement procedure of a similar car part on another vehicle

Important!

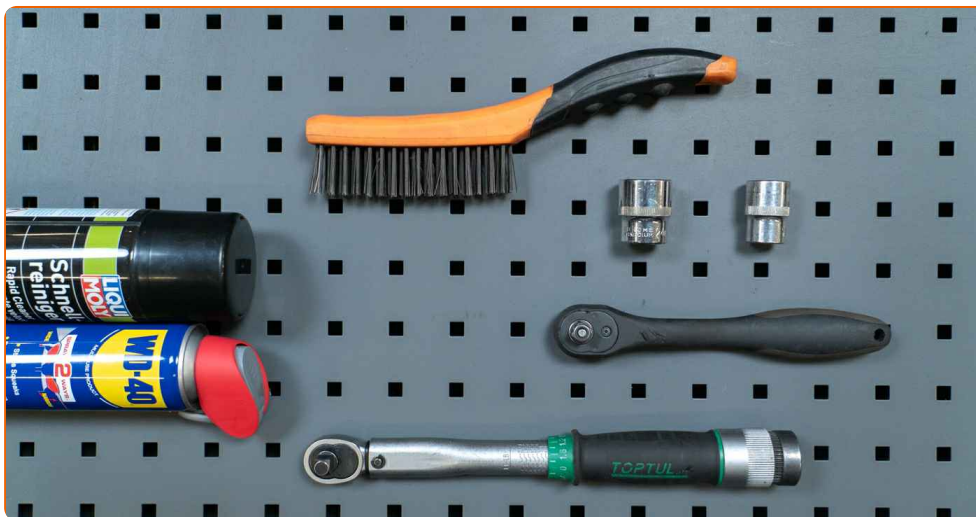
This replacement procedure can be used for:

VAUXHALL Vivaro Platform / Chassis (X83) 2.0 CDTI, VAUXHALL Vivaro Platform / Chassis (X83) 2.5 CDTI

The steps may slightly vary depending on the car design.

This tutorial was created based on the replacement procedure for a similar car part on: OPEL Vivaro A Combi (X83) 2.5 CDTI (F7, J7, A07)

REPLACEMENT: ENGINE MOUNTS – VAUXHALL VIVARO PLATFORM / CHASSIS (X83). LIST OF THE TOOLS YOU'LL NEED:



- Wire brush
- WD-40 spray
- All-purpose cleaning spray
- Torque wrench
- 18 mm socket
- 24 mm socket
- Ratchet wrench or power tool for removal/installation of threaded fasteners
- Car lift or jack with jack stands, and wheel chocks

[Buy tools](#)

Replacement: engine mounts – VAUXHALL Vivaro Platform / Chassis (X83).
AUTODOC recommends:

- All the work should be carried out with the ignition switched off.

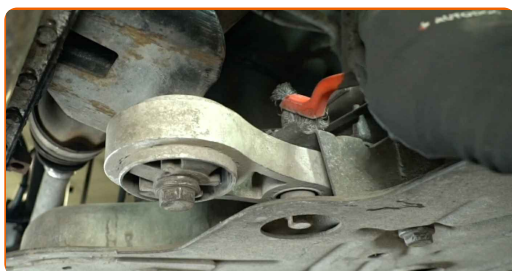
REPLACEMENT: ENGINE MOUNTS – VAUXHALL VIVARO PLATFORM / CHASSIS (X83). USE THE FOLLOWING PROCEDURE:

- 1 Raise the vehicle or place it over an inspection pit.

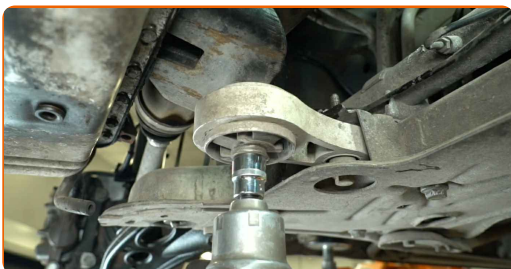
Warning!

- If you are using a jack, make sure the car is parked on a hard, flat surface.
- Make sure to additionally secure the car with jack stands.

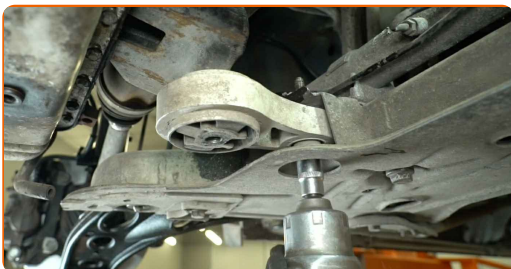
- 2 Clean the engine mount fasteners. Use a wire brush. Use WD-40 spray.



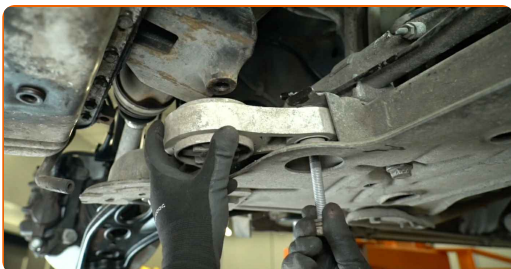
- 3 Unscrew the fastener that connects the engine mount to the engine mount bracket. Use a 24 mm socket. Use a ratchet wrench.



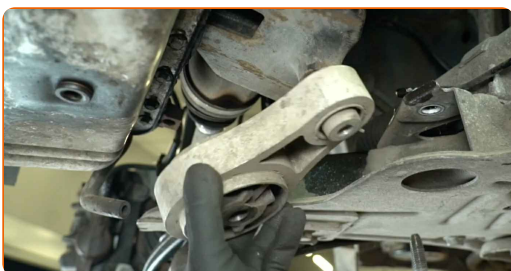
- 4 Unscrew the fastener that connects the engine mount to the subframe. Use an 18 mm socket. Use a ratchet wrench.



- 5 Remove the fastening bolts.



- 6 Remove the engine mount.

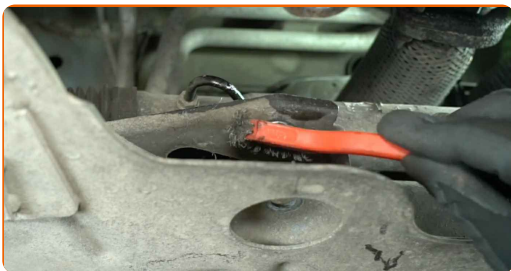


Replacement: engine mounts – VAUXHALL Vivaro Platform / Chassis (X83).
AUTODOC experts recommend:

- Carefully inspect the other engine mounts and replace them if necessary.

7

Clean the mounting seats of the engine mount. Use a wire brush. Use an all-purpose cleaning spray.



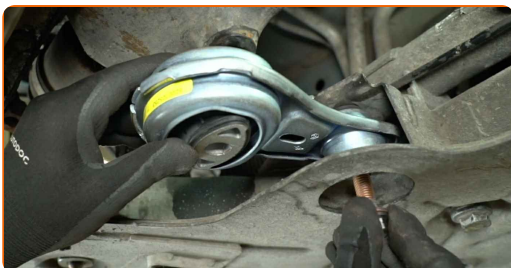
8

Install a new engine mount.



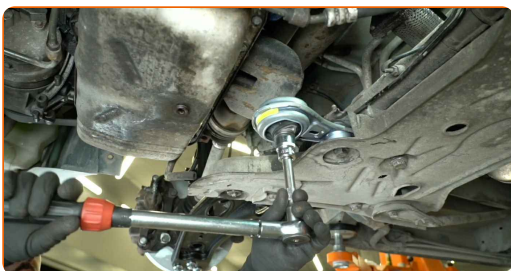
9

Install the fastening bolts.

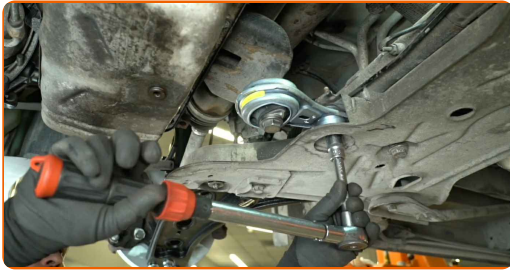


10

Tighten the fastener that connects the engine mount to the engine mount bracket. Use a 24 mm socket. Use a torque wrench. Tightening torque: 100 N·m.



- 11 Tighten the fastener that connects the engine mount to the subframe. Use an 18 mm socket. Use a torque wrench. Tightening torque: 60 N·m.



- 12 Lower the vehicle.

WELL DONE! 

VIEW MORE TUTORIALS

AUTODOC – TOP QUALITY AND AFFORDABLE CAR PARTS ONLINE

AUTODOC MOBILE APP: GREAT DEALS AND CONVENIENT SHOPPING



+ AUTODOC

GET IT ON
Google Play

Download on the
App Store

Download

A GREAT SELECTION OF SPARE PARTS FOR YOUR CAR

ENGINE MOUNTS: A WIDE SELECTION

DISCLAIMER:

The document contains only general recommendations that may be useful for you when you perform repair or replacement work. AUTODOC shall not be liable for any loss, injury, damage of property occurring in the repair or replacement process due to incorrect use or misinterpretation of the provided information.

AUTODOC shall not be liable for any possible mistakes and uncertainties in this guide. The information provided is for information purposes only and cannot replace advice from specialists.

AUTODOC shall not be liable for incorrect or hazardous usage of equipment, tools and car parts. AUTODOC strongly recommends to be careful and observe the safety rules when performing repair or replacement works. Remember: usage of low quality auto parts does not guarantee you the appropriate level of road safety.

© Copyright 2025 – All the contents of this website, in particular texts, photographs and graphics, are protected by copyright. All rights, including reproduction, publication, editing and translation rights, are reserved by AUTODOC SE.