



How to change front
lower arm on **VAUXHALL**
Corsa Mk II (C)
Hatchback (X01) –
replacement guide

SIMILAR VIDEO TUTORIAL



This video shows the replacement procedure of a similar car part on another vehicle

Important!

This replacement procedure can be used for:

VAUXHALL Corsa Mk II (C) Hatchback (X01) 1.4 Twinport, VAUXHALL Corsa Mk II (C) Hatchback (X01) 1.2 Twinport, VAUXHALL Corsa Mk II (C) Hatchback (X01) 1.0 12V, VAUXHALL Corsa Mk II (C) Hatchback (X01) 1.2 16V, VAUXHALL Corsa Mk II (C) Hatchback (X01) 1.8 16V, VAUXHALL Corsa Mk II (C) Hatchback (X01) 1.7 DI 16V, VAUXHALL Corsa Mk II (C) Hatchback (X01) 1.7 DTI 16V, VAUXHALL Corsa Mk II (C) Hatchback (X01) 1.4 16V, VAUXHALL Corsa Mk II (C) Hatchback (X01) 1.7 CDTI 16V, VAUXHALL Corsa Mk II (C) Hatchback (X01) 1.3 CDTI 16V

The steps may slightly vary depending on the car design.

This tutorial was created based on the replacement procedure for a similar car part on: OPEL Corsa C Hatchback (X01) 1.3 CDTI (F08, F68)

REPLACEMENT: FRONT LOWER ARM – VAUXHALL CORSA MK II (C) HATCHBACK (X01). LIST OF THE TOOLS YOU'LL NEED:



- Wire brush
- WD-40 spray
- Brake cleaner
- Copper grease
- Combination spanner #16
- Combination spanner #18
- Drive socket # 16
- Drive socket # 18
- Torx bit T20
- Wheel impact socket #17
- Ratchet wrench
- Torque wrench
- Crow bar
- Pin punch
- Flat chisel
- Hammer
- Rubber mallet
- Hydraulic transmission jack
- Wheel chock

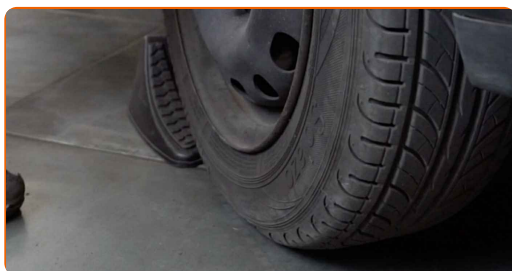
Buy tools

Replacement: front lower arm – VAUXHALL Corsa Mk II (C) Hatchback (X01).
AUTODOC recommends:

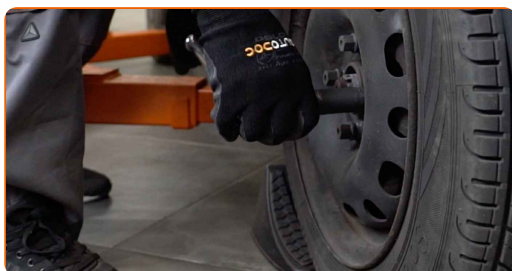
- The replacement procedure is identical for the left and right lower control arms.
- Please note: all work on the car – VAUXHALL Corsa Mk II (C) Hatchback (X01) – should be done with the engine switched off.

CARRY OUT REPLACEMENT IN THE FOLLOWING ORDER:

1 Secure the wheels with chocks.



2 Loosen the wheel mounting bolts. Use wheel impact socket #17.



3 Raise the front of the car and secure on supports.

4 Unscrew the wheel bolts.

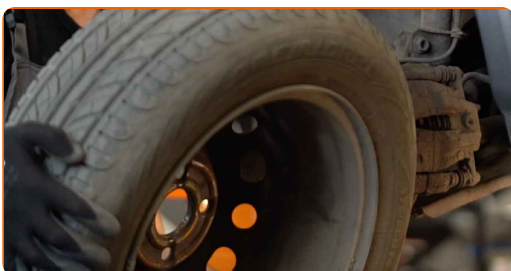


Replacement: front lower arm – VAUXHALL Corsa Mk II (C) Hatchback (X01).

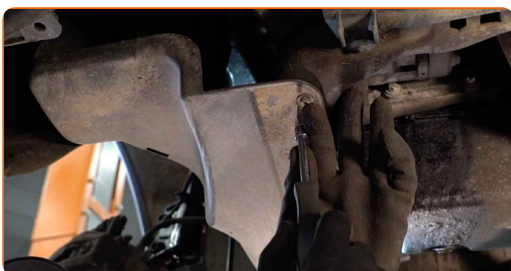
Tip:

- To avoid injury, hold up the wheel when unscrewing the bolts.

5 Remove the wheel.



6 Unscrew and remove the wheel arch cover fasteners. Use Torx T20.



7 Remove the wheel arch cover.



8

Clean all joints of the arm. Use a wire brush. Use WD-40 spray.

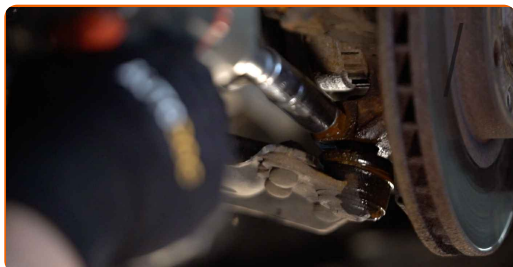


AUTODOC recommends:

- Replacement: front lower arm – VAUXHALL Corsa Mk II (C) Hatchback (X01).
After applying the spray, wait a few minutes.
- Wear protective goggles.

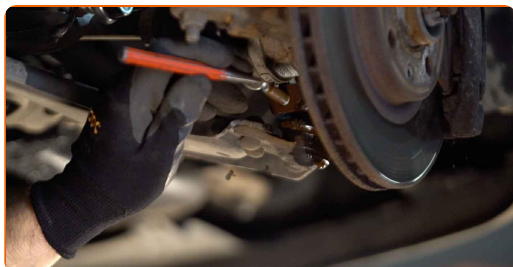
9

Unscrew the ball joint fastening to the steering knuckle. Use a combination spanner #16. Use a drive socket #16. Use a ratchet wrench.



10

Remove the fastening bolt. Use a rubber mallet. Use a pin punch.



11

Clean all joints of the arm. Use a wire brush. Use WD-40 spray.

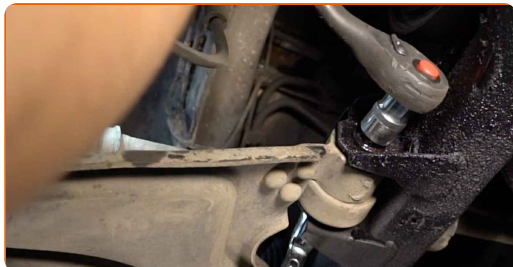


Replacement: front lower arm – VAUXHALL Corsa Mk II (C) Hatchback (X01).
AUTODOC experts recommend:

- After applying the spray, wait a few minutes.
- Wear protective goggles.

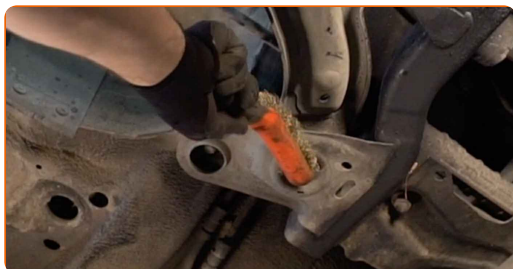
12

Unscrew the front arm fastener. Use a combination spanner #18. Use a drive socket #18. Use a ratchet wrench.

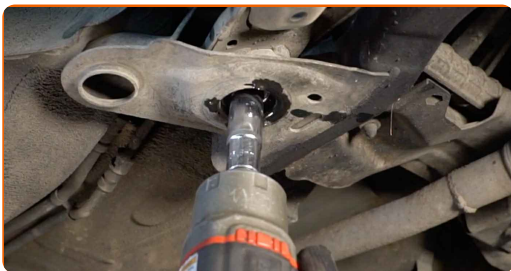


13

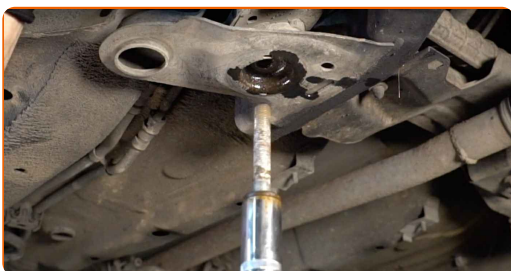
Clean all joints of the arm. Use a wire brush. Use WD-40 spray.



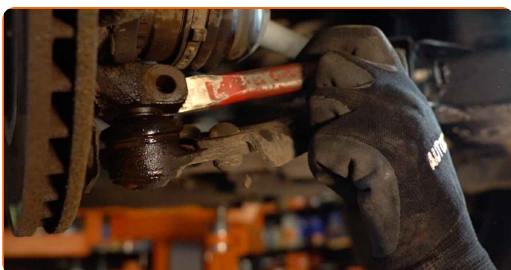
14 Unscrew the rear arm fastener. Use a combination spanner #18. Use a drive socket #18. Use a ratchet wrench.



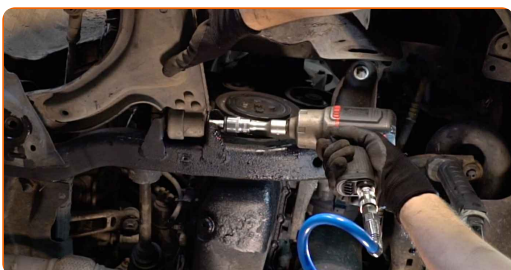
15 Remove the fastening bolt.



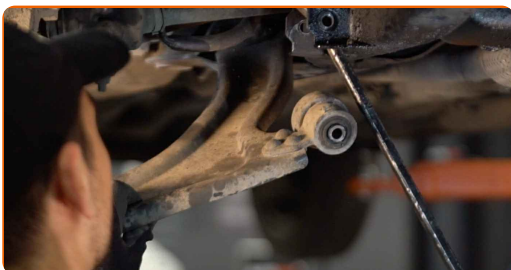
16 Disconnect the ball joint from the steering knuckle. Use a flat metal-working chisel. Use a hammer.



17 Remove the fastening bolt.



18 Remove the arm. Use a crowbar.



19

Clean the mounting seats and the thread of the suspension arm. Use a wire brush. Use WD-40 spray.



20

Install a new arm.



Replacement: front lower arm – VAUXHALL Corsa Mk II (C) Hatchback (X01).
Tip from AUTODOC:

- During the installation process, use only new bolts and nuts.

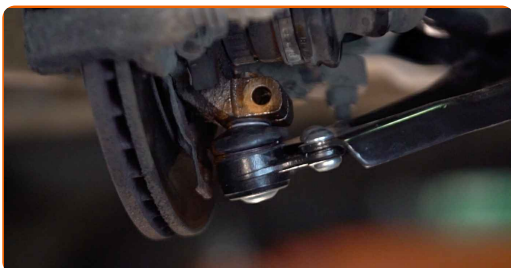
21

Install the fastening bolts.



22

Connect the ball joint to the steering knuckle.



Replacement: front lower arm – VAUXHALL Corsa Mk II (C) Hatchback (X01).
 Professionals recommend:

- Do not damage the ball joint cover.

23

Install the fastening bolt. Use a drive socket #18. Use a combination spanner #18. Do not tighten it.



24

Screw the fasteners of the ball joint. Use a drive socket #18. Use a combination spanner #18.



25

Support the arm. Use a hydraulic transmission jack.



- 26** Tighten the front fastener connecting the control arm to the subframe. Use a combination spanner #18. Use a drive socket #18. Use a torque wrench. Tighten it to 90 Nm torque.+90°



AUTODOC recommends:

- Important! Be sure to use new fasteners.

- 27** Tighten the rear fastener connecting the arm to the body subframe. Use a combination spanner #18. Use a drive socket #18. Use a torque wrench. Tighten it to 90 Nm torque.+90°



AUTODOC recommends:

- Important! Be sure to use new fasteners.

- 28** Tighten the ball joint fastener. Use a combination spanner #16. Use a drive socket #16. Use a torque wrench. Tighten it to 60 nm torque.



- 29** Remove the support from under the arm.



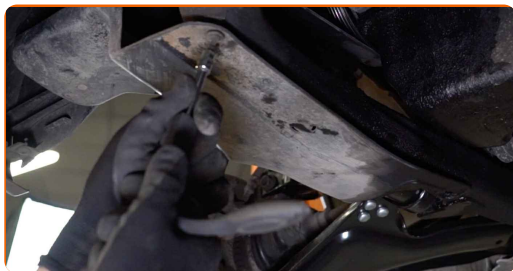
AUTODOC recommends:

- Replacement: front lower arm – VAUXHALL Corsa Mk II (C) Hatchback (X01). Lower the transmission jack smoothly, without jerks, to avoid damaging components and mechanisms.

- 30** Install the wheel arch cover to its mounting seat.

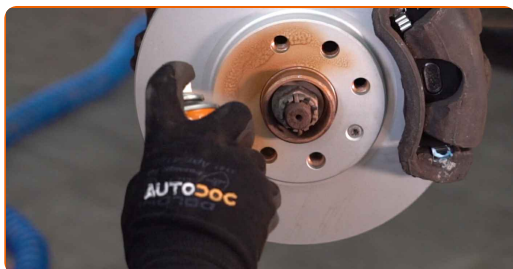


31 Install and tighten the wheel arch cover fasteners. Use Torx T20.



32 Treat all joints of the arm. Use copper grease.

33 Treat the surface where the brake disc contacts the wheel rim. Use copper grease.



34 Clean the brake disk surface. Use a brake cleaner.

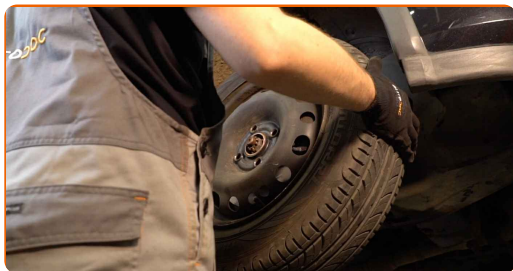


Replacement: front lower arm – VAUXHALL Corsa Mk II (C) Hatchback (X01).

Tip:

- After applying the spray, wait a few minutes.

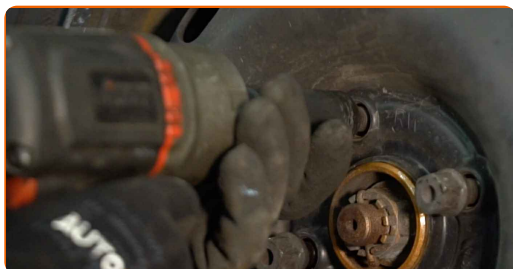
35 Install the wheel.



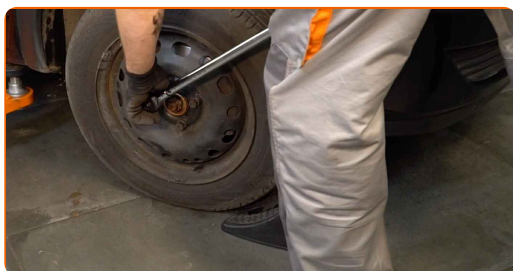
AUTODOC recommends:

- Important! Hold the wheel while screwing in the fastening bolts. VAUXHALL Corsa Mk II (C) Hatchback (X01)

36 Screw in the wheel bolts. Use wheel impact socket #17.

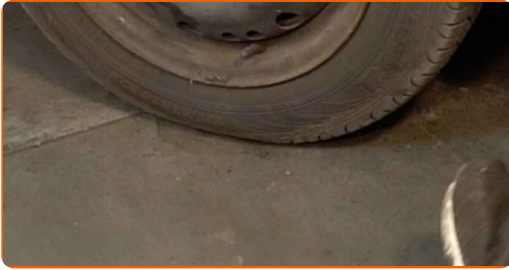


37 Lower the car and working in a cross order, tighten the wheel bolts. Use a torque wrench. Tighten it to 110 nm torque.



38

Remove the jacks and chocks.



WELL DONE! 

VIEW MORE TUTORIALS

AUTODOC – TOP QUALITY AND AFFORDABLE CAR PARTS ONLINE

AUTODOC MOBILE APP: GREAT DEALS AND CONVENIENT SHOPPING



+ AUTODOC

GET IT ON
Google Play

 Download on the
App Store

Download

A GREAT SELECTION OF SPARE PARTS FOR YOUR CAR

CONTROL ARM: A WIDE SELECTION

DISCLAIMER:

The document contains only general recommendations that may be useful for you when you perform repair or replacement work. AUTODOC shall not be liable for any loss, injury, damage of property occurring in the repair or replacement process due to incorrect use or misinterpretation of the provided information.

AUTODOC shall not be liable for any possible mistakes and uncertainties in this guide. The information provided is for information purposes only and cannot replace advice from specialists.

AUTODOC shall not be liable for incorrect or hazardous usage of equipment, tools and car parts. AUTODOC strongly recommends to be careful and observe the safety rules when performing repair or replacement works. Remember: usage of low quality auto parts does not guarantee you the appropriate level of road safety.

© Copyright 2023 – All the contents of this website, in particular texts, photographs and graphics, are protected by copyright. All rights, including reproduction, publication, editing and translation rights, are reserved by AUTODOC SE.