



How to change pollen  
filter on **VAUXHALL**  
**Combo Mk III (D) Box**  
**Body / Estate (X12)** –  
replacement guide

### SIMILAR VIDEO TUTORIAL



This video shows the replacement procedure of a similar car part on another vehicle

### **Important!**

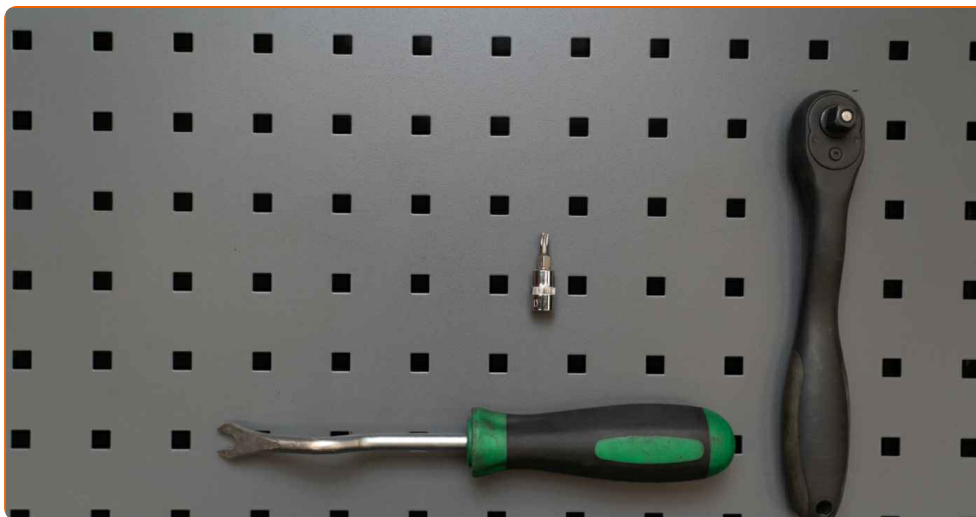
This replacement procedure can be used for:

VAUXHALL Combo Mk III (D) Box Body / Estate (X12) 1.4, VAUXHALL Combo Mk III (D) Box Body / Estate (X12) 1.3 CDTi, VAUXHALL Combo Mk III (D) Box Body / Estate (X12) 1.6 CDTi, VAUXHALL Combo Mk III (D) Box Body / Estate (X12) 2.0 CDTi

The steps may slightly vary depending on the car design.

This tutorial was created based on the replacement procedure for a similar car part on: OPEL Corsa D Hatchback (S07) 1.3 CDTI (L08, L68)

REPLACEMENT: POLLEN FILTER – VAUXHALL COMBO  
MK III (D) BOX BODY / ESTATE (X12). LIST OF THE  
TOOLS YOU'LL NEED:



- Torx screwdriver T20
- Clip removal tool
- Microfibre towel

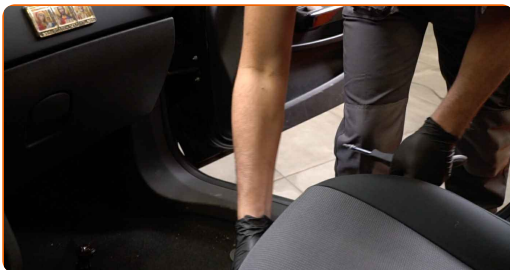
**Buy tools**

Replacement: pollen filter – VAUXHALL Combo Mk III (D) Box Body / Estate (X12). Professionals recommend:

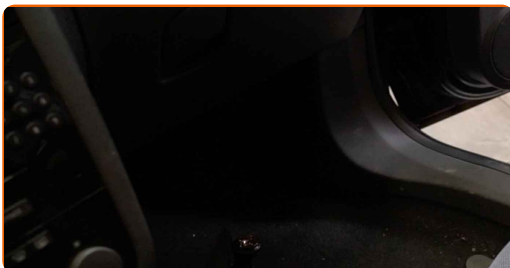
- Replace the cabin filter at least once every six months, in early spring and autumn seasons.
- Follow the terms, recommendations and requirements of the part operation provided by the manufacturer.
- If the air flow into the cabin has sharply reduced, replace the filter before a scheduled maintenance.
- Please note: all work on the car – VAUXHALL Combo Mk III (D) Box Body / Estate (X12) – should be done with the engine switched off.

**CARRY OUT REPLACEMENT IN THE FOLLOWING ORDER:**

**1** Move the passenger seat fully backwards.

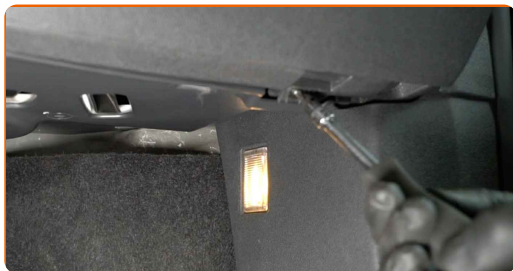


**2** Spread a cloth under the cabin filter cover to protect the interior upholstery from getting dirty.

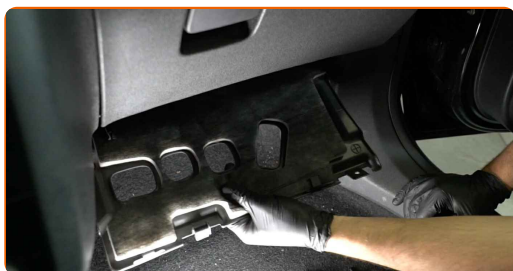


**3**

Unscrew the fasteners of the bottom trim panel. Use Torx T20.

**4**

Remove the bottom cover of the glove box.

**5**

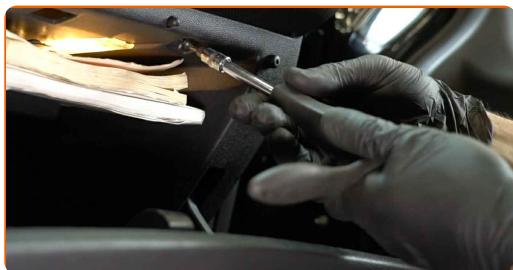
Unscrew the glove box fastening screws. Use Torx T20.

**6**

Open the glove box.

**7**

Unscrew the glove box fastening screws. Use Torx T20.



**8** Unplug the glove box light connector.



**9** Remove the glovebox.



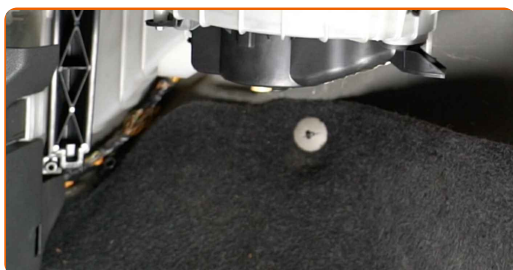
Replacement: pollen filter – VAUXHALL Combo Mk III (D) Box Body / Estate (X12). AUTODOC recommends:

- Be careful to avoid damaging the glove compartment fasteners.

**10** Remove the fasteners of the air duct housing. Use a clip removal tool.



**11** Remove the air distribution housing assembly.



**12** Remove the cabin filter housing cover



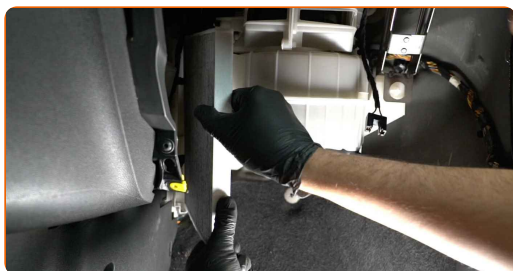
**13** Remove the filter element from the filter housing



Replacement: pollen filter – VAUXHALL Combo Mk III (D) Box Body / Estate (X12). Tip from AUTODOC:

- Do not attempt to clean and reuse the filter - it will affect the quality of air cleaning inside the car.

**14** Insert a new filter element into the filter housing. Make sure that the filter edge fits tight to the housing.



**AUTODOC recommends:**

- Check out the correct location of the filter element. Do not skew.
- Follow the air flow direction arrow on the filter.
- VAUXHALL Combo Mk III (D) Box Body / Estate (X12) – It's important to only use high-quality filters.

**15**

Reinstall the cabin filter housing cover Make sure you hear a click indicating that it is locked in place.

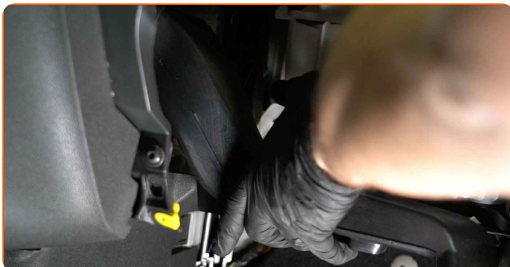


**Replacement: pollen filter – VAUXHALL Combo Mk III (D) Box Body / Estate (X12). Tip from AUTODOC experts:**

- Do not apply excessive force when installing the part. Otherwise you may damage the fasteners.

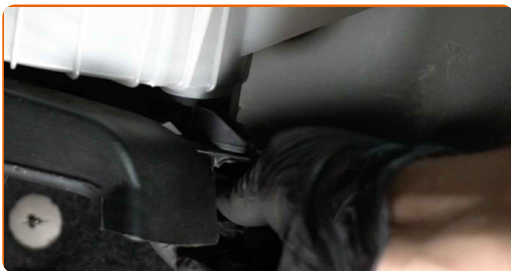
**16**

Reinstall the air distribution housing assembly.

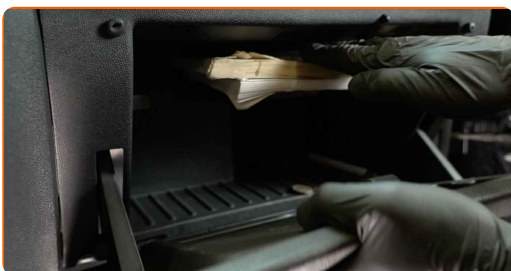




**17** Install the air duct housing fasteners.



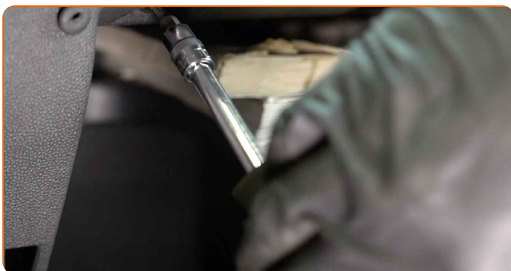
**18** Install the glove box.



**19** Plug in the glove box light connector.



**20** Screw the glove box fastening screws. Use Torx T20.



**21** Close the glove box.

**22** Screw the glove box fastening screws. Use Torx T20.

**23** Install the glove box bottom cover.



**24** Screw in the fasteners of the bottom trim panel. Use Torx T20.



**25** Remove the cloth.

**26** Return the passenger seat to its initial position.

**27** Switch on the ignition.

**28** Switch on the air conditioning system. This is necessary in order to make sure that the component operates properly.

**29** Switch off the ignition.

**WELL DONE!** 

**VIEW MORE TUTORIALS**

# AUTODOC – TOP QUALITY AND AFFORDABLE CAR PARTS ONLINE

**AUTODOC MOBILE APP: GREAT DEALS AND CONVENIENT SHOPPING**



**+ AUTODOC**

GET IT ON  
**Google Play**

 Download on the  
**App Store**

**Download**

**A GREAT SELECTION OF SPARE PARTS FOR YOUR CAR**

**INTERIOR AIR FILTERS: A WIDE SELECTION**

## **DISCLAIMER:**

The document contains only general recommendations that may be useful for you when you perform repair or replacement work. AUTODOC shall not be liable for any loss, injury, damage of property occurring in the repair or replacement process due to incorrect use or misinterpretation of the provided information.

AUTODOC shall not be liable for any possible mistakes and uncertainties in this guide. The information provided is for information purposes only and cannot replace advice from specialists.

AUTODOC shall not be liable for incorrect or hazardous usage of equipment, tools and car parts. AUTODOC strongly recommends to be careful and observe the safety rules when performing repair or replacement works. Remember: usage of low quality auto parts does not guarantee you the appropriate level of road safety.

© Copyright 2023 – All the contents of this website, in particular texts, photographs and graphics, are protected by copyright. All rights, including reproduction, publication, editing and translation rights, are reserved by AUTODOC SE.