



How to change pollen
filter on **VAUXHALL**
Astravan Mk V (H) (A04)
– replacement guide

SIMILAR VIDEO TUTORIAL



This video shows the replacement procedure of a similar car part on another vehicle

Important!

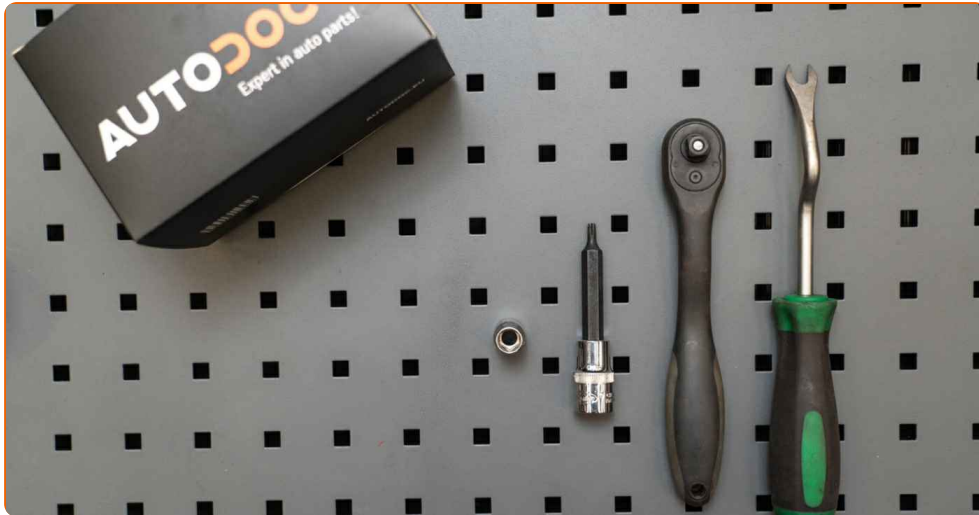
This replacement procedure can be used for:

VAUXHALL Astravan Mk V (H) (A04) 1.7 CDTi, VAUXHALL Astravan Mk V (H) (A04) 1.6, VAUXHALL Astravan Mk V (H) (A04) 1.3 CDTi, VAUXHALL Astravan Mk V (H) (A04) 1.4 i, VAUXHALL Astravan Mk V (H) (A04) 1.9 CDTi

The steps may slightly vary depending on the car design.

This tutorial was created based on the replacement procedure for a similar car part on: OPEL Zafira A (T98) 2.0 DI 16V (F75)

REQUIRED TOOLS:



- Drive socket # 10
- Torx bit T20
- Clip removal tool

[Buy tools](#)

Replacement: pollen filter – VAUXHALL Astravan Mk V (H) (A04). Tip from AUTODOC:

- Replace the cabin filter at least once every six months, in early spring and autumn seasons.
- Follow the terms, recommendations and requirements of the part operation provided by the manufacturer.
- If the air flow into the cabin has sharply reduced, replace the filter before a scheduled maintenance.
- All work should be done with the engine stopped.

REPLACEMENT: POLLEN FILTER – VAUXHALL ASTRAVAN MK V (H) (A04). TAKE THE FOLLOWING STEPS:

1

Unscrew the fasteners of the bottom trim panel. Use Torx T20.



2

Remove the clips of the bottom trim panel. Use a clip removal tool.



3

Remove the bottom cover of the glove box.

4 Unscrew the glove box fastening screws. Use Torx T20.



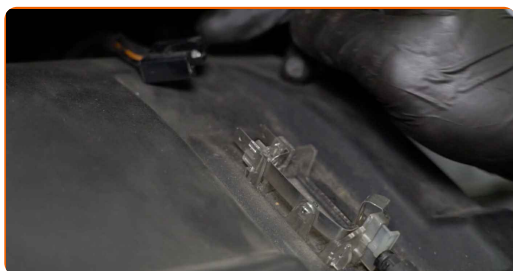
5 Remove the glovebox.



Replacement: pollen filter – VAUXHALL Astravan Mk V (H) (A04). Tip:

- Be careful to avoid damaging the glove compartment fasteners.

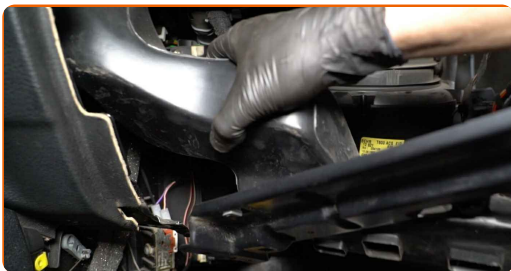
6 Unplug the glove box light connector.



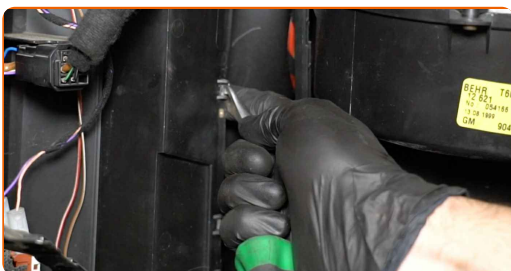
7 Unscrew the fasteners of the air distribution housing assembly. Use a drive socket #10.



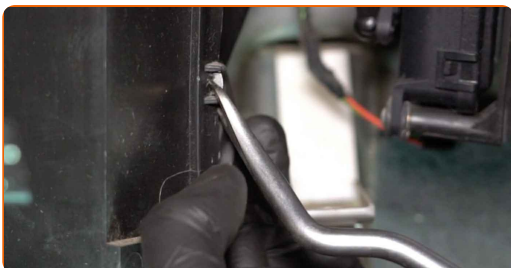
8 Remove the air distribution housing assembly.



9 Release the cabin filter cover clips. Use a clip removal tool.

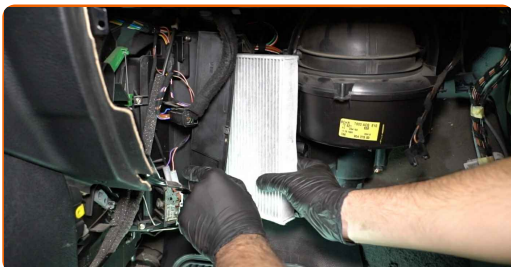


10 Release the cabin filter cover clips.



11 Remove the cabin filter housing cover.

12 Remove the filter element from the filter housing.



Replacement: pollen filter – VAUXHALL Astravan Mk V (H) (A04). AUTODOC experts recommend:

- Do not attempt to clean and reuse the filter - it will affect the quality of air cleaning inside the car.

13

Insert a new filter element into the filter housing. Make sure that the filter edge fits tight to the housing.

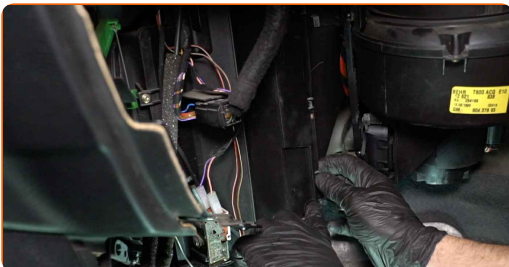


AUTODOC recommends:

- Replacement: pollen filter – VAUXHALL Astravan Mk V (H) (A04). Be sure to position the filtering element correctly. Avoid misalignment.
- Follow the air flow direction arrow on the filter.
- Take care to only use quality filters.

14

Reinstall the cabin filter housing cover. Make sure you hear a click indicating that it is locked in place.



AUTODOC recommends:

- Replacement: pollen filter – VAUXHALL Astravan Mk V (H) (A04). Do not use excessive force during installation. This may damage the fasteners.

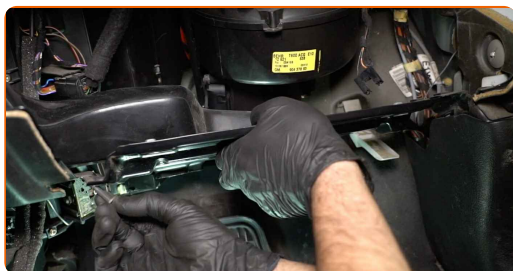
15

Attach the cabin filter cover clips.



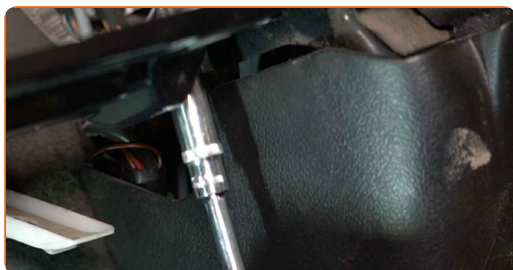
16

Reinstall the air distribution housing assembly.



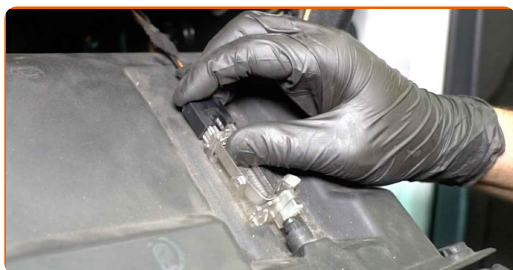
17

Screw in the fasteners of the air distribution housing assembly. Use a drive socket #10.



18

Plug in the glove box light connector.



19 Install the glove box.



20 Screw the glove box fastening screws. Use Torx T20.



21 Install the glove box bottom cover.



22 Screw in the fasteners of the bottom trim panel. Use Torx T20.



23 Install the clips of the bottom trim panel.



24 Switch on the ignition.

25 Switch on the air conditioning system. This is necessary in order to make sure that the component operates properly.

26 Switch off the ignition.

WELL DONE! 

[VIEW MORE TUTORIALS](#)

AUTODOC – TOP QUALITY AND AFFORDABLE CAR PARTS ONLINE

AUTODOC MOBILE APP: GREAT DEALS AND CONVENIENT SHOPPING



+ AUTODOC

GET IT ON
Google Play

 Download on the
App Store

Download

A GREAT SELECTION OF SPARE PARTS FOR YOUR CAR

POLLEN FILTER: A WIDE SELECTION

DISCLAIMER:

The document contains only general recommendations that may be useful for you when you perform repair or replacement work. AUTODOC shall not be liable for any loss, injury, damage of property occurring in the repair or replacement process due to incorrect use or misinterpretation of the provided information.

AUTODOC shall not be liable for any possible mistakes and uncertainties in this guide. The information provided is for information purposes only and cannot replace advice from specialists.

AUTODOC shall not be liable for incorrect or hazardous usage of equipment, tools and car parts. AUTODOC strongly recommends to be careful and observe the safety rules when performing repair or replacement works. Remember: usage of low quality auto parts does not guarantee you the appropriate level of road safety.

© Copyright 2023 – All the contents of this website, in particular texts, photographs and graphics, are protected by copyright. All rights, including reproduction, publication, editing and translation rights, are reserved by AUTODOC SE.