



How to change pollen  
filter on **VAUXHALL**  
**Astra Mk IV (G) CC (T98)**  
– replacement guide

### SIMILAR VIDEO TUTORIAL



This video shows the replacement procedure of a similar car part on another vehicle

#### **i Important!**

This replacement procedure can be used for:

VAUXHALL Astra Mk IV (G) CC (T98) 1.4 16V, VAUXHALL Astra Mk IV (G) CC (T98) 1.6, VAUXHALL Astra Mk IV (G) CC (T98) 1.6 16V, VAUXHALL Astra Mk IV (G) CC (T98) 1.8 16V, VAUXHALL Astra Mk IV (G) CC (T98) 2.0 16V, VAUXHALL Astra Mk IV (G) CC (T98) 1.7 TD, VAUXHALL Astra Mk IV (G) CC (T98) 2.0 DI, VAUXHALL Astra Mk IV (G) CC (T98) 2.0 DTI 16V, VAUXHALL Astra Mk IV (G) CC (T98) 1.7 DTI 16V, VAUXHALL Astra Mk IV (G) CC (T98) 2.2 16V, VAUXHALL Astra Mk IV (G) CC (T98) 2.0 SRI Turbo, VAUXHALL Astra Mk IV (G) CC (T98) 1.7 CDTI 16V, VAUXHALL Astra Mk IV (G) CC (T98) 1.6 Dualfuel

The steps may slightly vary depending on the car design.

This tutorial was created based on the replacement procedure for a similar car part on: OPEL Astra G CC (T98) 1.2 16V (F08, F48)

REPLACEMENT: POLLEN FILTER – VAUXHALL ASTRA  
MK IV (G) CC (T98). LIST OF THE TOOLS YOU'LL NEED:



- Drive socket # 7
- Torx screwdriver T20
- Fender cover

**Buy tools**

Replacement: pollen filter – VAUXHALL Astra Mk IV (G) CC (T98). AUTODOC experts recommend:

- Replace the cabin filter at least once every six months, in early spring and autumn seasons.
- Follow the terms, recommendations and requirements of the part operation provided by the manufacturer.
- If the air flow into the cabin has sharply reduced, replace the filter before a scheduled maintenance.
- Warning! Shut down the engine before starting any work – VAUXHALL Astra Mk IV (G) CC (T98).

## CARRY OUT REPLACEMENT IN THE FOLLOWING ORDER:

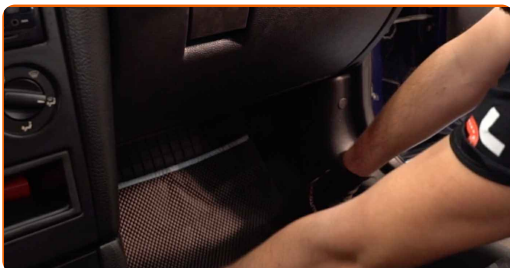
1

Move the passenger seat fully backwards.

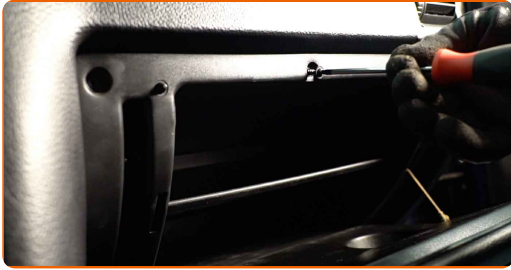


2

Spread a cloth under the cabin filter cover to protect the interior upholstery from getting dirty.



**3** Unscrew the glove box fastening screws. Use Torx T20.



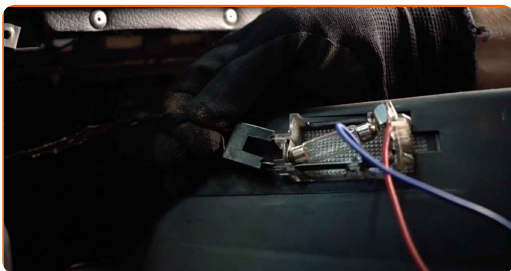
**4** Remove the glovebox.



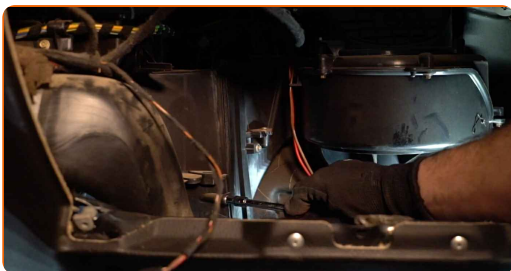
Replacement: pollen filter – VAUXHALL Astra Mk IV (G) CC (T98). Tip:

- Be careful to avoid damaging the glove compartment fasteners.

**5** Unplug the glove box light connector.



**6** Unscrew the fasteners of the cabin filter housing cover. Use a drive socket #7.



**7** Remove the cabin filter cover.



**8** Remove the cabin filter.



Replacement: pollen filter – VAUXHALL Astra Mk IV (G) CC (T98).  
Professionals recommend:

- Do not attempt to clean and reuse the filter - it will affect the quality of air cleaning inside the car.

**9** Clean the mounting seat of the cabin filter.



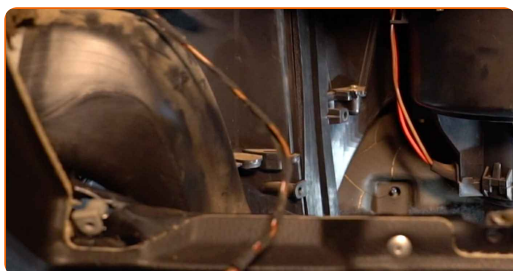
**10** Install the cabin filter to its mounting seat.



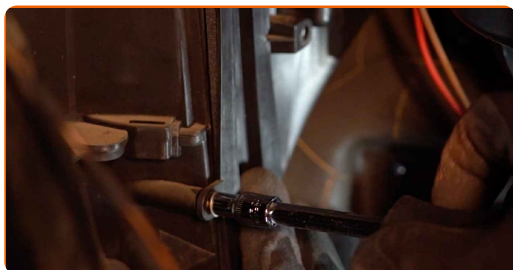
Replacement: pollen filter – VAUXHALL Astra Mk IV (G) CC (T98). AUTODOC experts recommend:

- Follow the air flow direction arrow on the filter.
- Replacement: pollen filter – VAUXHALL Astra Mk IV (G) CC (T98). Be sure to position the filtering element correctly. Avoid misalignment.
- Take care to only use quality filters.

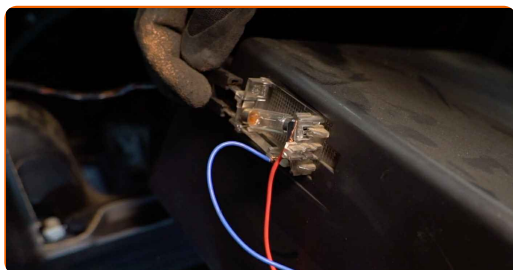
**11** Install the filter cover.



**12** Screw in the fasteners of the cabin filter housing cover. Use a drive socket #7.



**13** Plug in the glove box light connector.





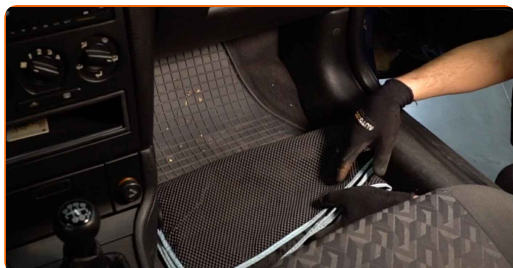
**14** Install the glove box.



**15** Screw the glove box fastening screws. Use Torx T20.



**16** Remove the cloth.



**17** Return the passenger seat to its initial position.



**18** Switch on the ignition.

**19** Switch on the air conditioning system. This is necessary in order to make sure that the component operates properly.



20

Switch off the ignition.

**WELL DONE!** 

**VIEW MORE TUTORIALS**

# AUTODOC – TOP QUALITY AND AFFORDABLE CAR PARTS ONLINE

**AUTODOC MOBILE APP: GREAT DEALS AND CONVENIENT SHOPPING**



**+ AUTODOC**

GET IT ON  
 **Google Play**

Download on the  
 **App Store**

**Download**

**A GREAT SELECTION OF SPARE PARTS FOR YOUR CAR**

**POLLEN FILTER: A WIDE SELECTION**

## **DISCLAIMER:**

The document contains only general recommendations that may be useful for you when you perform repair or replacement work. AUTODOC shall not be liable for any loss, injury, damage of property occurring in the repair or replacement process due to incorrect use or misinterpretation of the provided information.

AUTODOC shall not be liable for any possible mistakes and uncertainties in this guide. The information provided is for information purposes only and cannot replace advice from specialists.

AUTODOC shall not be liable for incorrect or hazardous usage of equipment, tools and car parts. AUTODOC strongly recommends to be careful and observe the safety rules when performing repair or replacement works. Remember: usage of low quality auto parts does not guarantee you the appropriate level of road safety.

© Copyright 2023 – All the contents of this website, in particular texts, photographs and graphics, are protected by copyright. All rights, including reproduction, publication, editing and translation rights, are reserved by AUTODOC SE.