



How to change rear
wheel bearing on
TOYOTA Yaris Verso
(_P2_) – replacement
guide

SIMILAR VIDEO TUTORIAL



This video shows the replacement procedure of a similar car part on another vehicle

Important!

This replacement procedure can be used for:

TOYOTA Yaris Verso (_P2_) 1.3 (NCP20_, NCP22_), TOYOTA Yaris Verso (_P2_) 1.5 (NCP21_), TOYOTA Yaris Verso (_P2_) 1.4 D-4D (NLP20_, NLP22_)

The steps may slightly vary depending on the car design.

This tutorial was created based on the replacement procedure for a similar car part on: TOYOTA Yaris Hatchback (_P1_) 1.3 (NCP10_, SCP12_)

REPLACEMENT: WHEEL BEARING – TOYOTA YARIS
VERSO (_P2_). TOOLS YOU MIGHT NEED:



- Wire brush
- WD-40 spray
- Copper grease
- Sealant
- Drive socket # 12
- Wheel impact socket #21
- Ratchet wrench
- Torque wrench
- Tap wrench
- Hammer
- Wheel chock

Buy tools

Replacement: wheel bearing – TOYOTA Yaris Verso (_P2_). Tip from AUTODOC experts:

- Do not re-use the bearing assembly of your TOYOTA Yaris Verso (_P2_) car.
- The wheel hub bearing replacement procedure is identical for both wheels on the same axle.
- All work should be done with the engine stopped.

REPLACEMENT: WHEEL BEARING – TOYOTA YARIS VERSO (_P2_). USE THE FOLLOWING PROCEDURE:

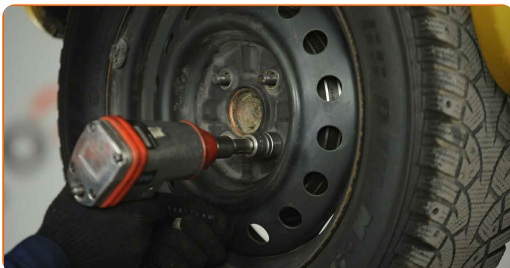
1 Secure the wheels with chocks.

2 Loosen the wheel mounting bolts. Use wheel impact socket #21.



3 Raise the rear of the car and secure on supports.

4 Unscrew the wheel bolts.

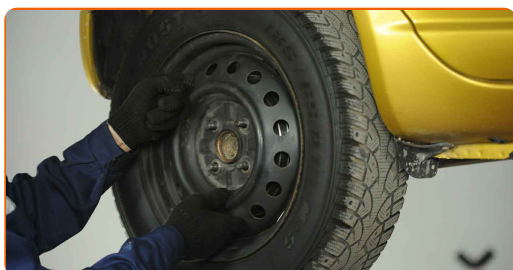


AUTODOC recommends:

- Important! Hold the wheel while unscrewing the fastening bolts. TOYOTA Yaris Verso (_P2_)

5

Remove the wheel.



6

Clean the brake drum. Use a wire brush. Use WD-40 spray.

7

Remove the brake drum.



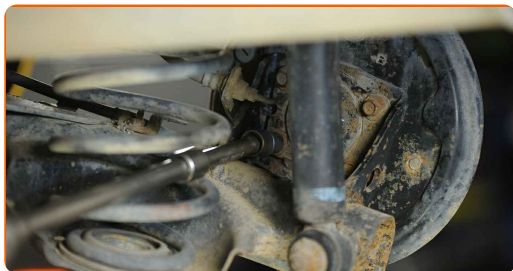
Replacement: wheel bearing – TOYOTA Yaris Verso (_P2_). Tip:

- Examine the brake drum. Replace it if necessary.

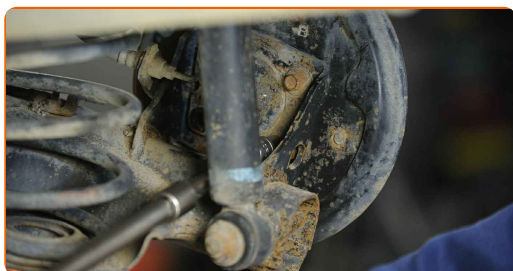
8

Clean the fasteners of the wheel hub bearing. Use WD-40 spray. Use a wire brush.

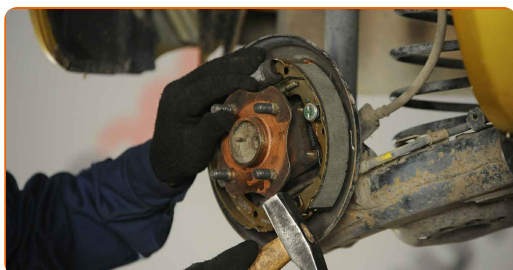
9 Unscrew the hub bearing mounting. Use a drive socket #12. Use a tap wrench. Use a ratchet wrench.



10 Remove the fastening bolts (4 pieces).



11 Remove the hub and the bearing together, since they are a sealed unit. Use a hammer.

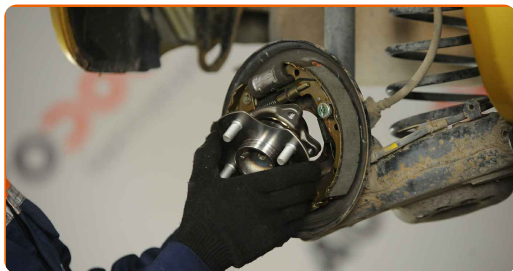


12 Treat the fastening bolts. Use a sealant.



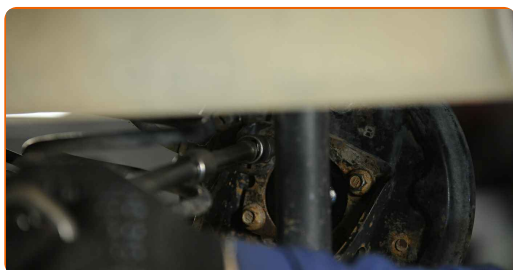
13 Clean the hub bearing mounting seat. Use a wire brush. Use WD-40 spray.

14 Install the new wheel hub with a bearing.



15 Install the fastening bolts (4 pieces).

16 Tighten the fastener of the wheel hub bearing. Use a drive socket #12. Use a tap wrench. Use a torque wrench. Tighten it to 52 nm torque.



17 Treat the wheel hub in the area where it contacts the brake drum. Use copper grease.

18 Install a brake drum.

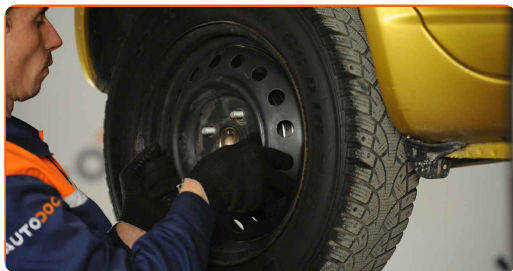


19 Clean the wheel rim mounting seat. Use a wire brush.

20 Treat the surface where the wheel rim contacts the brake drum. Use copper grease.



21 Install the wheel.



Replacement: wheel bearing – TOYOTA Yaris Verso (_P2_). AUTODOC recommends:

- To avoid injury, hold up the wheel when screwing in the fastening bolts.

22 Screw in the wheel bolts. Use wheel impact socket #21.

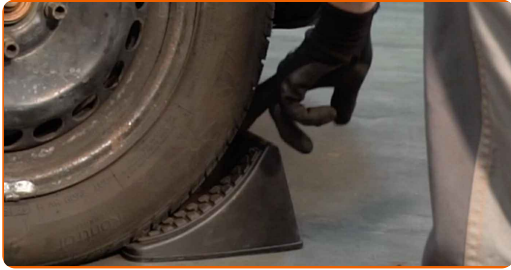


23 Lower the car and working in a cross order, tighten the wheel bolts. Use wheel impact socket #21. Use a torque wrench. Tighten it to 103 Nm torque.



24

Remove the jacks and chocks.



WELL DONE! 

VIEW MORE TUTORIALS

AUTODOC – TOP QUALITY AND AFFORDABLE CAR PARTS ONLINE

AUTODOC MOBILE APP: GREAT DEALS AND CONVENIENT SHOPPING



+ AUTODOC

GET IT ON
Google Play

 Download on the
App Store

Download

A GREAT SELECTION OF SPARE PARTS FOR YOUR CAR

WHEEL BEARING: A WIDE SELECTION

DISCLAIMER:

The document contains only general recommendations that may be useful for you when you perform repair or replacement work. AUTODOC shall not be liable for any loss, injury, damage of property occurring in the repair or replacement process due to incorrect use or misinterpretation of the provided information.

AUTODOC shall not be liable for any possible mistakes and uncertainties in this guide. The information provided is for information purposes only and cannot replace advice from specialists.

AUTODOC shall not be liable for incorrect or hazardous usage of equipment, tools and car parts. AUTODOC strongly recommends to be careful and observe the safety rules when performing repair or replacement works. Remember: usage of low quality auto parts does not guarantee you the appropriate level of road safety.

© Copyright 2023 – All the contents of this website, in particular texts, photographs and graphics, are protected by copyright. All rights, including reproduction, publication, editing and translation rights, are reserved by AUTODOC SE.