



How to change rear  
wheel bearing on  
**TOYOTA Yaris**  
**Hatchback (\_P13\_) –**  
replacement guide

### SIMILAR VIDEO TUTORIAL



This video shows the replacement procedure of a similar car part on another vehicle

#### **Important!**

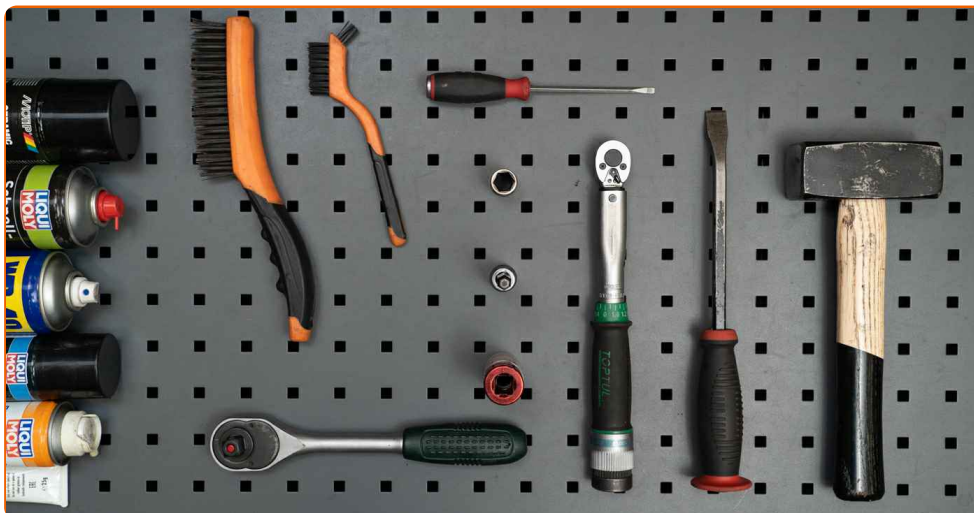
This replacement procedure can be used for:

TOYOTA Yaris Hatchback (\_P13\_) 1.3 (NSP130\_), TOYOTA Yaris Hatchback (\_P13\_) 1.0 (KSP130\_), TOYOTA Yaris Hatchback (\_P13\_) 1.4 D (NLP130\_), TOYOTA Yaris Hatchback (\_P13\_) 1.5 (NSP131\_), TOYOTA Yaris Hatchback (\_P13\_) 1.8 GRMN (NSP131\_), TOYOTA Yaris Hatchback (\_P13\_) 1.0 (KSP130)

The steps may slightly vary depending on the car design.

This tutorial was created based on the replacement procedure for a similar car part on: TOYOTA Yaris Hatchback (\_P9\_) 1.3 VVT-i (SCP90\_)

**REPLACEMENT: WHEEL BEARING – TOYOTA YARIS HATCHBACK (\_P13\_). TOOLS YOU'LL NEED:**



- Wire brush
- Nylon cleaning brush
- WD-40 spray
- All-purpose cleaning spray
- Brake cleaner
- Electronic spray
- Anti-squeal paste
- Ceramic grease
- Copper grease
- Torque wrench
- Drive socket # 14
- HEX bit No.H7
- Wheel impact socket #21
- Ratchet wrench
- Flat screwdriver
- Hammer
- Crow bar
- Hydraulic transmission jack
- Wheel chock

**Buy tools**

**AUTODOC recommends:**

- Do not re-use the bearing assembly of your TOYOTA Yaris Hatchback (\_P13\_) car.
- The wheel hub bearing replacement procedure is identical for both wheels on the same axle.
- Please note: all work on the car – TOYOTA Yaris Hatchback (\_P13\_) – should be done with the engine switched off.

**CARRY OUT REPLACEMENT IN THE FOLLOWING ORDER:**

- 1 Open the bonnet. Unscrew the brake fluid reservoir cap.
- 2 Secure the wheels with chocks.
- 3 Loosen the wheel mounting bolts. Use wheel impact socket #21.



- 4 Raise the car.

**Replacement: wheel bearing – TOYOTA Yaris Hatchback (\_P13\_). Tip from AUTODOC experts:**

- If you are using a jack, make sure it rests on a flat surface without any unevenness.
- Be sure to additionally secure the car with jack stands.

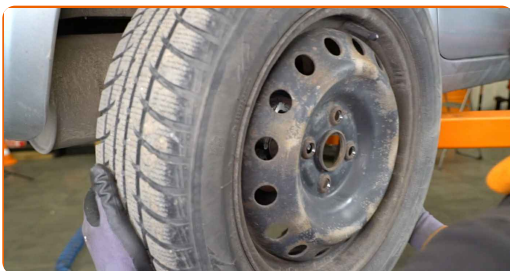
**5** Unscrew the wheel bolts.



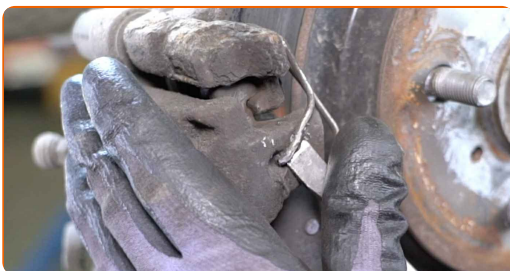
**AUTODOC recommends:**

- Warning! To avoid injury, hold the wheel while unscrewing the fastening bolts.  
TOYOTA Yaris Hatchback (\_P13\_)

**6** Remove the wheel.



**7** Detach the brake caliper retaining spring. Use a crowbar.

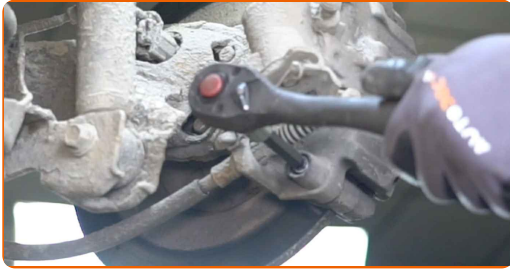


**8** Remove the dust boot caps of the brake caliper guide pins. Use a crowbar.



9

Unscrew the brake caliper fasteners. Use HEX No.H7. Use a ratchet wrench.



10

Remove the brake caliper. Use a crowbar.

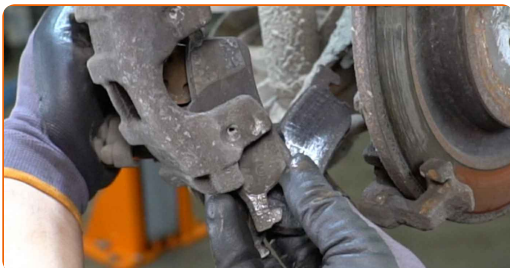


Replacement: wheel bearing – TOYOTA Yaris Hatchback (\_P13\_). Tip:

- Tie the caliper to the suspension or to the body with a wire without disconnecting from the brake hose to prevent depressurization of the brake system.
- Make sure that the brake caliper is not hanging on the brake hose.
- Don't press the brake pedal after the brake caliper has been removed. As a result, the piston can fall out from the brake cylinder, and brake fluid leakage and depressurization of the system may occur.

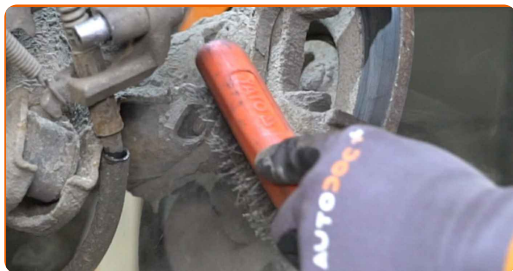
11

Remove the brake pads.

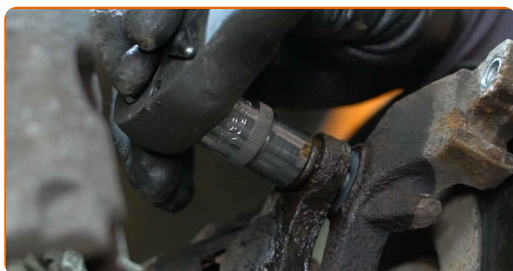




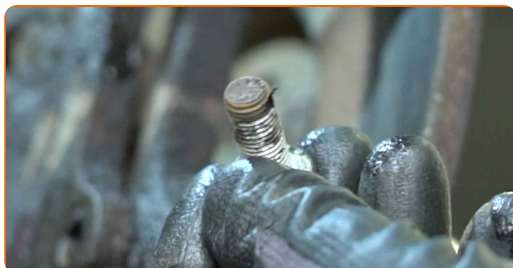
**12** Clean the brake caliper bracket fasteners. Use a wire brush. Use WD-40 spray.



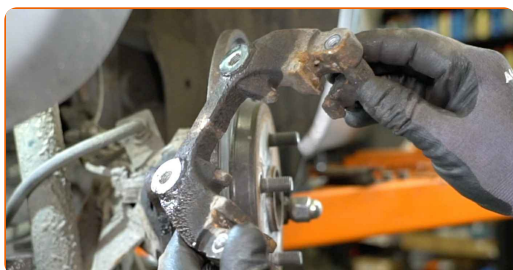
**13** Unscrew the brake caliper bracket fasteners. Use a drive socket #14. Use a ratchet wrench.



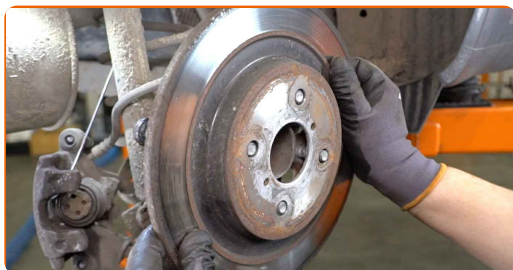
**14** Remove the fastening bolts.



**15** Remove the caliper bracket.



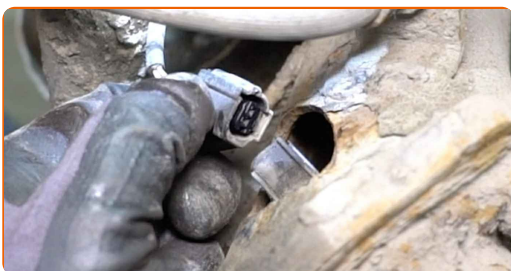
**16** Remove the brake disc.



**17** Clean the ABS sensor fastener. Use a nylon cleaning brush. Use all-purpose cleaning spray.



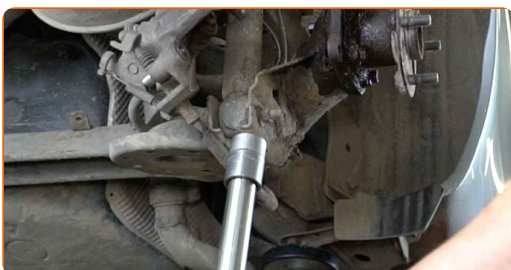
**18** Detach the ABS sensor connector. Use a flat screwdriver.



**19** Clean the wheel hub fastener. Use a wire brush. Use WD-40 spray.

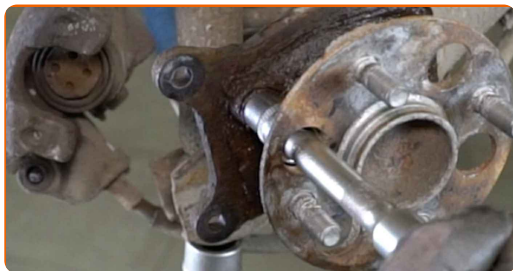


**20** Support the rear suspension beam. Use a hydraulic transmission jack.

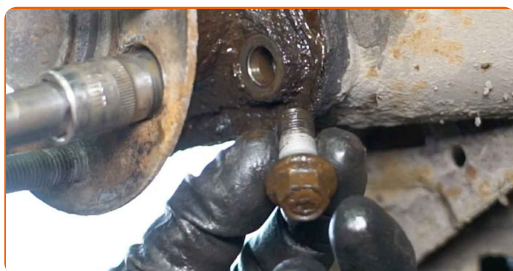




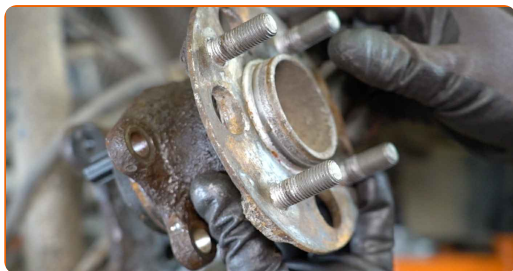
**21** Unscrew the wheel hub bearing fasteners. Use a drive socket #14. Use a ratchet wrench.



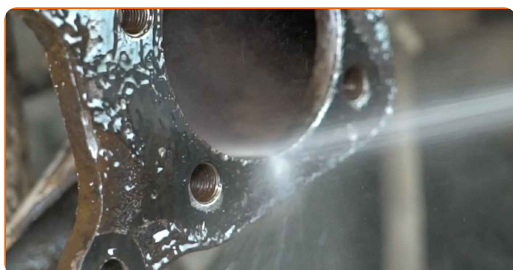
**22** Remove the fastening bolts.



**23** Remove the hub and the bearing together, since they are made as an assembly. Use a crowbar. Use a hammer.



**24** Clean the hub bearing mounting seat. Use a wire brush. Use all-purpose cleaning spray.



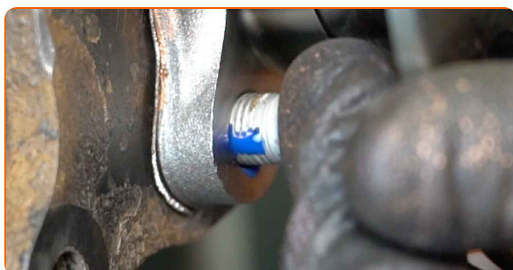
**25** Treat the wheel hub mounting seat. Use copper grease.



**26** Install the new wheel hub together with the bearing.



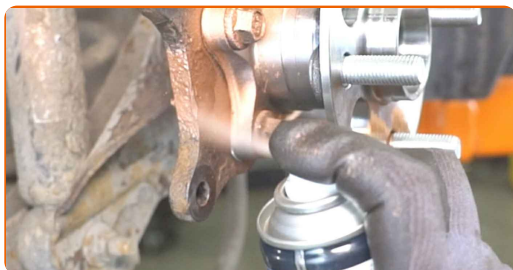
**27** Install the fastening bolts.



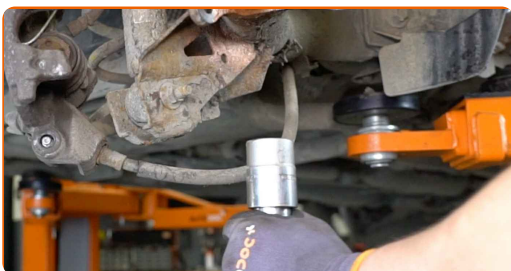
**28** Tighten the wheel hub bearing fasteners. Use a drive socket #14. Use a torque wrench. Tighten it to 90 nm torque.



**29** Treat the fasteners of the wheel hub bearing. Use copper grease.



**30** Remove the support from under the rear axle beam.



**AUTODOC recommends:**

- Replacement: wheel bearing – TOYOTA Yaris Hatchback (\_P13\_). Lower the transmission jack smoothly, without jerks, to avoid damaging components and mechanisms.

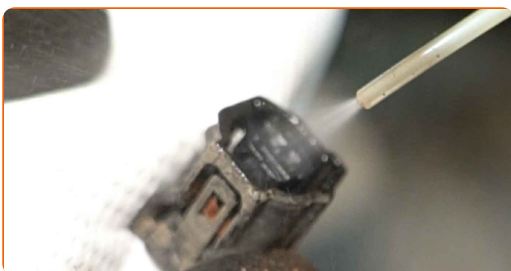
**31** Treat the hub where it contacts the brake disk. Use ceramic grease.



**32** Install the brake disc.

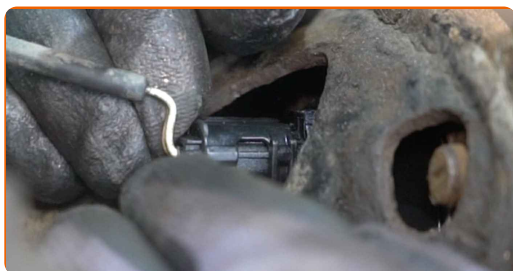


**33** Treat the ABS sensor connector. Use dielectric grease.



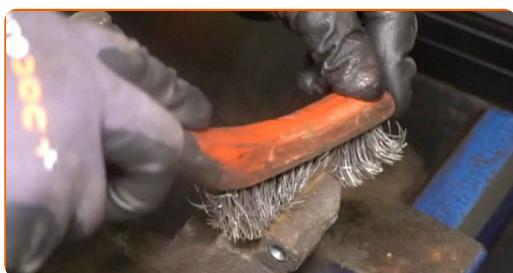
34

Attach the ABS sensor connector.



35

Clean the brake caliper bracket from dirt and dust. Use a wire brush. Use a brake cleaner.

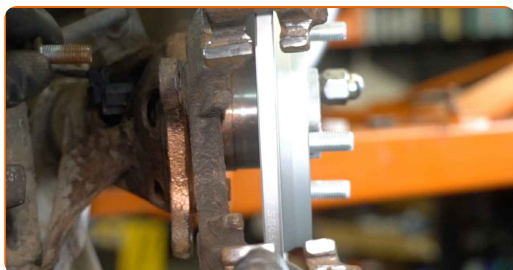


**AUTODOC recommends:**

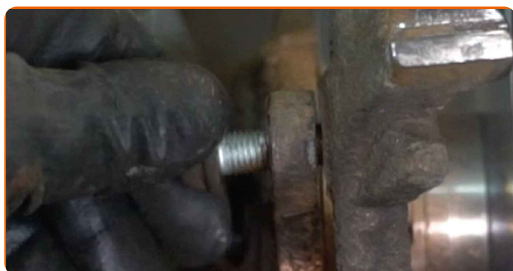
- Replacement: wheel bearing – TOYOTA Yaris Hatchback (\_P13\_). After applying the spray, wait a few minutes.
- Check the brake caliper bracket, brake caliper guide pins and boots. Clean them. Replace, if necessary.

36

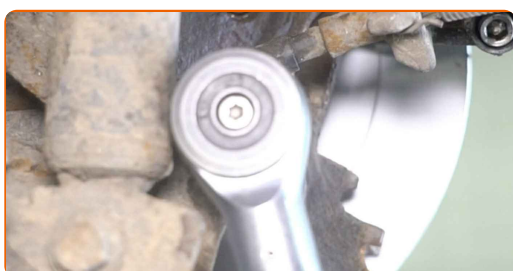
Install the brake caliper bracket.



**37** Install the fastening bolts.



**38** Tighten the brake caliper bracket fasteners. Use a drive socket #14. Use a torque wrench. Tighten it to 57 Nm torque.



**39** Treat the brake pads in the area where their surface comes into contact with the brake caliper bracket. Use anti-squeal paste.

Replacement: wheel bearing – TOYOTA Yaris Hatchback (\_P13\_). Tip from AUTODOC experts:

- Make sure the disc surface is clean before installing the pads.

**40** Install the brake pads.





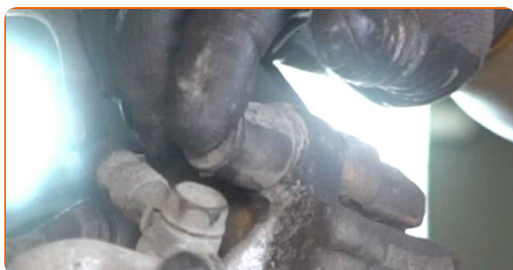
**41** Install the brake caliper and fix it.



**42** Tighten the brake caliper fasteners. Use HEX No.H7. Use a torque wrench. Tighten it to 34 nm torque.



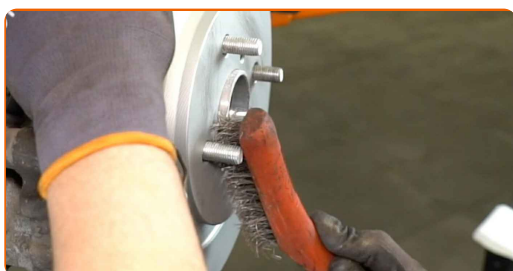
**43** Install the dust boot caps of the brake caliper guide pins.



**44** Install the brake caliper retaining spring.



**45** Clean the wheel rim mounting seat. Use a wire brush.





**46** Treat the surface where the brake disc contacts the wheel rim. Use ceramic grease.



**47** Clean the brake disk surface. Use a brake cleaner.



**AUTODOC recommends:**

- Replacement: wheel bearing – TOYOTA Yaris Hatchback (\_P13\_). After applying the spray, wait a few minutes.

**48** Install the wheel.



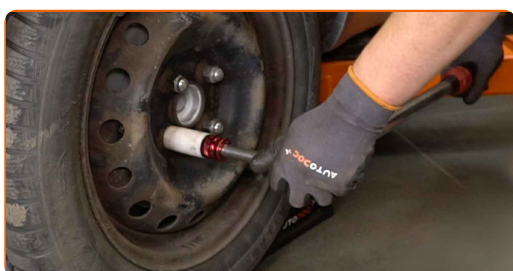
**AUTODOC recommends:**

- Important! Hold the wheel while screwing in the fastening bolts. TOYOTA Yaris Hatchback (\_P13\_)

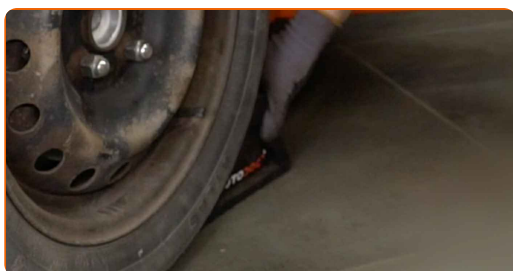
**49** Screw in the wheel bolts. Use wheel impact socket #21.



**50** Lower the car and working in a cross order, tighten the wheel bolts. Use wheel impact socket #21. Use a torque wrench. Tighten it to 103 Nm torque.



**51** Remove the jacks and chocks.



Replacement: wheel bearing – TOYOTA Yaris Hatchback (\_P13\_). Tip from AUTODOC experts:

- Without starting the engine, press the brake pedal several times until you feel significant resistance.
- Check the brake fluid level in the expansion tank and refill if necessary.

52

Tighten the brake fluid reservoir cap. Close the hood.

**WELL DONE!** 

**VIEW MORE TUTORIALS**

# AUTODOC – TOP QUALITY AND AFFORDABLE CAR PARTS ONLINE

**AUTODOC MOBILE APP: GREAT DEALS AND CONVENIENT SHOPPING**



**A GREAT SELECTION OF SPARE PARTS FOR YOUR CAR**

**WHEEL BEARING: A WIDE SELECTION**

## **(i) DISCLAIMER:**

The document contains only general recommendations that may be useful for you when you perform repair or replacement work. AUTODOC shall not be liable for any loss, injury, damage of property occurring in the repair or replacement process due to incorrect use or misinterpretation of the provided information.

AUTODOC shall not be liable for any possible mistakes and uncertainties in this guide. The information provided is for information purposes only and cannot replace advice from specialists.

AUTODOC shall not be liable for incorrect or hazardous usage of equipment, tools and car parts. AUTODOC strongly recommends to be careful and observe the safety rules when performing repair or replacement works. Remember: usage of low quality auto parts does not guarantee you the appropriate level of road safety.

© Copyright 2023 – All the contents of this website, in particular texts, photographs and graphics, are protected by copyright. All rights, including reproduction, publication, editing and translation rights, are reserved by AUTODOC SE.