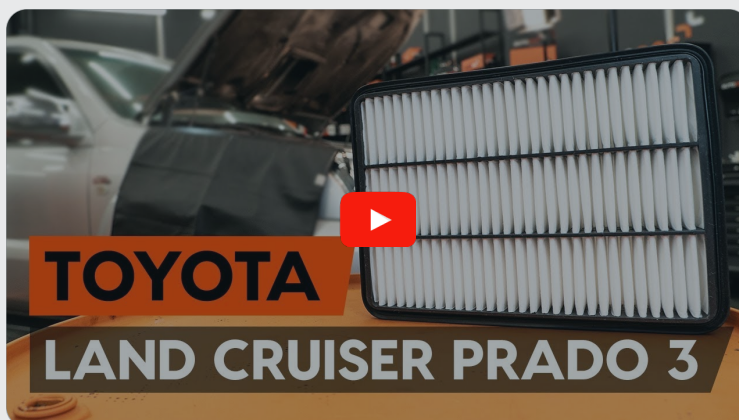




How to change air filter
on **TOYOTA LAND
CRUISER 100 (UZJ100)** –
replacement guide

SIMILAR VIDEO TUTORIAL



This video shows the replacement procedure of a similar car part on another vehicle

Important!

This replacement procedure can be used for:

TOYOTA LAND CRUISER 100 (UZJ100) 4.7, TOYOTA LAND CRUISER 100 (UZJ100) 4.7 4WD (UZJ100_)

The steps may slightly vary depending on the car design.

This tutorial was created based on the replacement procedure for a similar car part on: TOYOTA LAND CRUISER (KDJ12_, GRJ12_) 3.0 D-4D

REPLACEMENT: AIR FILTER – TOYOTA LAND CRUISER
100 (UZZJ100). TOOLS YOU MIGHT NEED:



• Microfibre towel

• Fender cover

Buy tools

AUTODOC recommends:

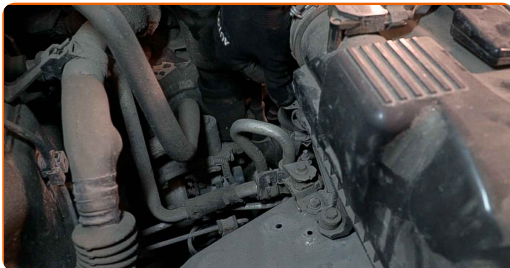
- Replacement: air filter – TOYOTA LAND CRUISER 100 (UZJ100). Do not ignore the maintenance schedule, recommendations, and requirements specified by the manufacturer on the use of the car part.
- All work should be done with the engine stopped.

REPLACEMENT: AIR FILTER – TOYOTA LAND CRUISER 100 (UZJ100). USE THE FOLLOWING PROCEDURE:

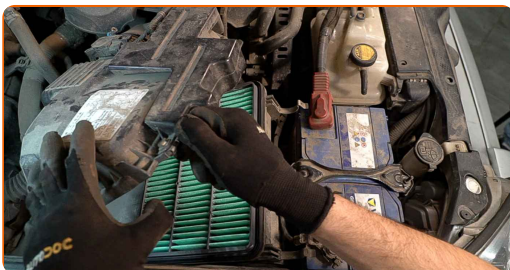
1 Open the bonnet.

2 Use a fender protection cover to prevent damaging paintwork and plastic parts of the car.

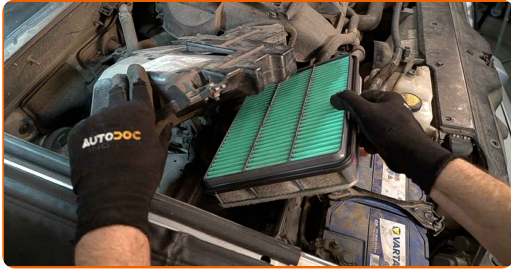
3 Release the air filter cover clips.



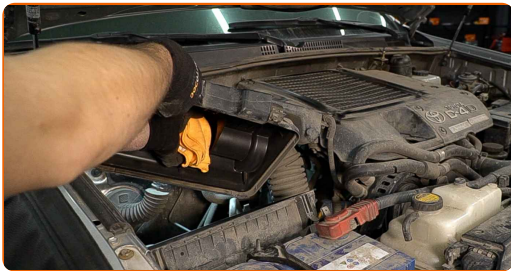
4 Slightly raise the cover of the air filter housing.



5 Remove the filter element from the filter housing.



6 Cover the air intake hose with a microfibre towel to prevent dust and dirt from getting into the system.



7 Clean the air filter cover and housing.



Replacement: air filter – TOYOTA LAND CRUISER 100 (UZJ100). AUTODOC experts recommend:

- Before cleaning the air filter cover and housing, cover the air duct parts, mass airflow sensor (if available), throttle valve with a clean cloth.

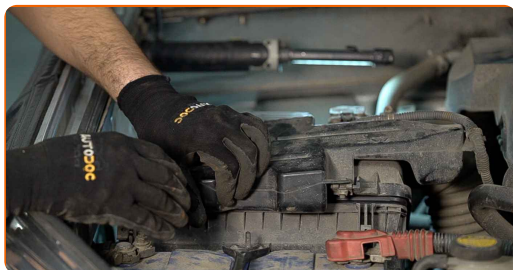
8 Insert a new filter element into the filter housing. Make sure that the filter edge fits tight to the housing.



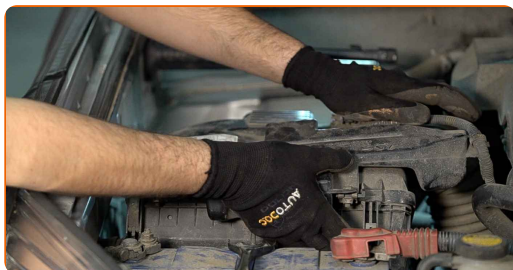
AUTODOC recommends:

- Replacement: air filter – TOYOTA LAND CRUISER 100 (UZJ100). Be sure to position the filtering element correctly. Avoid misalignment.
- Take care to only use quality filters.
- During installation, make sure to prevent dust and dirt from getting into the air filter housing.

9 Reinstall the air filter cover. Fasten it.



10 Press the air filter cover clips into place.



11 Remove the fender protection cover.

12 Close the hood.

WELL DONE! 

VIEW MORE TUTORIALS

AUTODOC – TOP QUALITY AND AFFORDABLE CAR PARTS ONLINE

AUTODOC MOBILE APP: GREAT DEALS AND CONVENIENT SHOPPING



A GREAT SELECTION OF SPARE PARTS FOR YOUR CAR

AIR FILTER: A WIDE SELECTION

(i) DISCLAIMER:

The document contains only general recommendations that may be useful for you when you perform repair or replacement work. AUTODOC shall not be liable for any loss, injury, damage of property occurring in the repair or replacement process due to incorrect use or misinterpretation of the provided information.

AUTODOC shall not be liable for any possible mistakes and uncertainties in this guide. The information provided is for information purposes only and cannot replace advice from specialists.

AUTODOC shall not be liable for incorrect or hazardous usage of equipment, tools and car parts. AUTODOC strongly recommends to be careful and observe the safety rules when performing repair or replacement works. Remember: usage of low quality auto parts does not guarantee you the appropriate level of road safety.

© Copyright 2023 – All the contents of this website, in particular texts, photographs and graphics, are protected by copyright. All rights, including reproduction, publication, editing and translation rights, are reserved by AUTODOC SE.