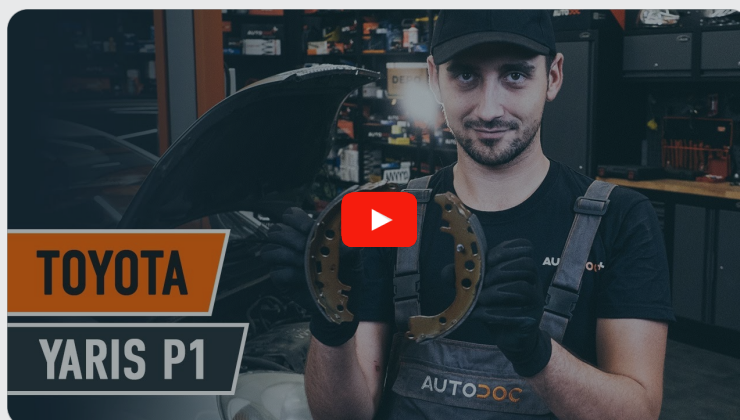




How to change rear
brake shoes on **TOYOTA**
Echo Saloon (_P1_) –
replacement guide

SIMILAR VIDEO TUTORIAL



This video shows the replacement procedure of a similar car part on another vehicle

Important!

This replacement procedure can be used for:
TOYOTA Echo Saloon (_P1_) 1.5 (NCP12_)

The steps may slightly vary depending on the car design.

This tutorial was created based on the replacement procedure for a similar car part on: TOYOTA Yaris Hatchback (_P1_) 1.3 (NCP10_, SCP12_)

REPLACEMENT: BRAKE SHOES – TOYOTA ECHO SALOON (_P1_). TOOLS YOU NEED:



- Wire brush
- WD-40 spray
- All-purpose cleaning spray
- Copper grease
- Torque wrench
- Drive socket # 10
- Wheel impact socket #21
- Ratchet wrench
- Flat Screwdriver
- Crow bar
- Round-nose pliers
- Water pump pliers
- Brake shoe retaining spring compressor
- Wheel chock

Buy tools

Replacement: brake shoes – TOYOTA Echo Saloon (_P1_). AUTODOC recommends:

- Replace brake shoes as a set on an axle. This will ensure efficient braking.
- The replacement procedure is identical for brake shoes on the same axle.
- Please note: all work on the car – TOYOTA Echo Saloon (_P1_) – should be done with the engine switched off.

CARRY OUT REPLACEMENT IN THE FOLLOWING ORDER:

1 Open the bonnet. Unscrew the brake fluid reservoir cap.

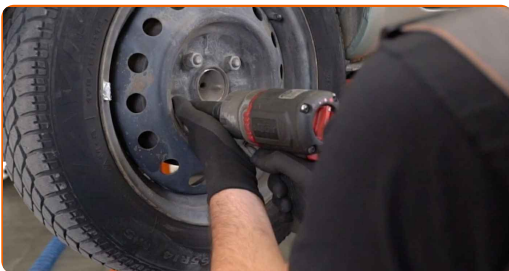
2 Secure the wheels with chocks.

3 Loosen the wheel mounting bolts. Use wheel impact socket #21.



4 Raise the rear of the car and secure on supports.

5 Unscrew the wheel bolts.



AUTODOC recommends:

- Warning! To avoid injury, hold the wheel while unscrewing the fastening bolts.
TOYOTA Echo Saloon (_P1_)

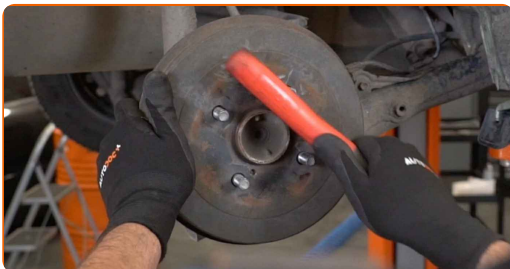
6

Remove the wheel.



7

Clean the brake drum fasteners. Use a wire brush. Use WD-40 spray.



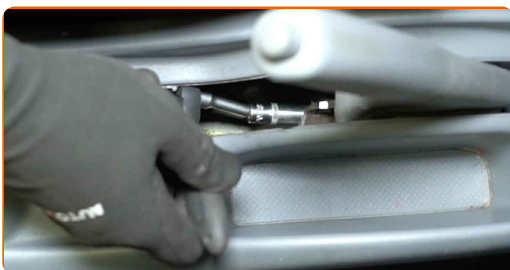
8

Remove the cap of the parking brake cable fastener.



9

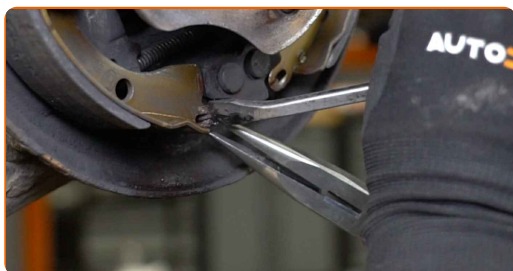
Loosen the parking brake cable. Use a drive socket #10. Use a ratchet wrench.



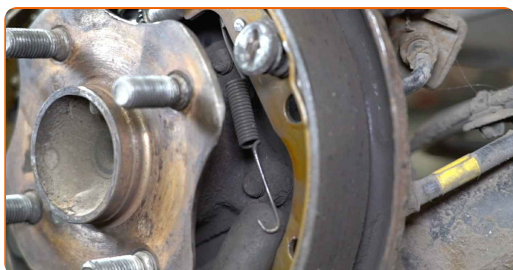
10 Remove the brake drum.



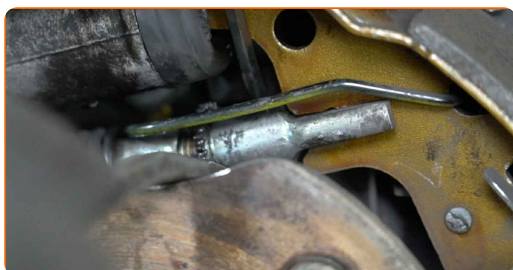
11 Remove the lower return spring of brake shoes. Use a crowbar. Use round-nose pliers.



12 Remove the hold-down spring. Use a flat screwdriver.



13 Move the parking brake shoes against the drum. Use a crowbar. Use a flat screwdriver.



14

Remove the hold-down pins of the brake shoes. Use a brake shoe retaining spring compressor.



15

Remove the upper return spring of the brake shoes. Use round-nose pliers.



16

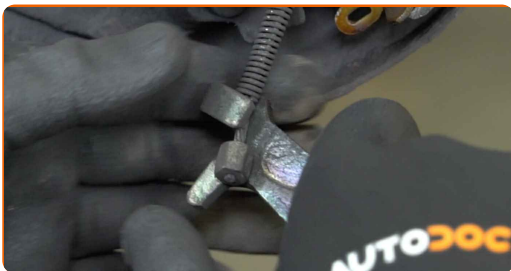
Pull both brake shoes with the adjuster from the working brake cylinder, avoiding damage to the boots.



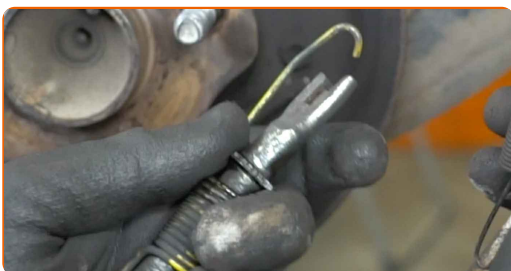
Replacement: brake shoes – TOYOTA Echo Saloon (_P1_). Tip from AUTODOC experts:

- Don't press the brake pedal after removing the rear brake drum shoes. This will cause the piston to fall out of the brake cylinder, leakage of brake fluid and depressurization of the system.

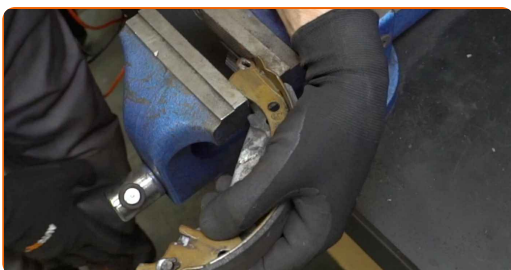
17 Disconnect the parking brake cable.



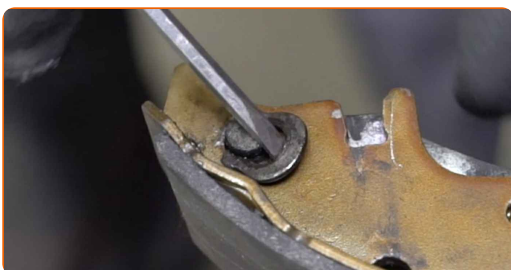
18 Perform further demounting of the upper retaining spring and the adjuster mechanism.



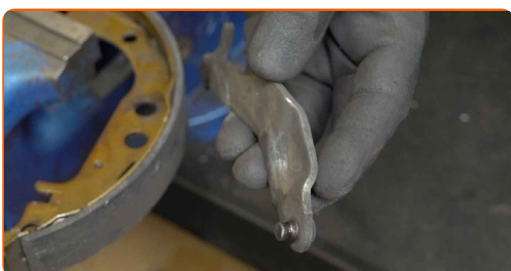
19 Place the brake shoes into the vice.



20 Remove the brake shoe hold-down cup.



21 Remove the brake shoe adjuster lever. Use a flat screwdriver.

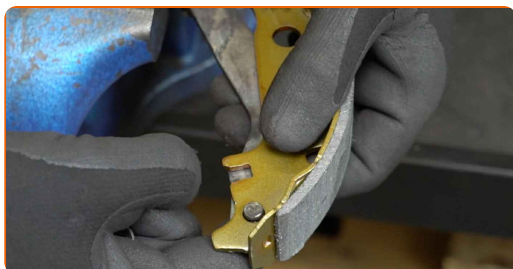


22 Loosen the vice and remove the brake shoes.

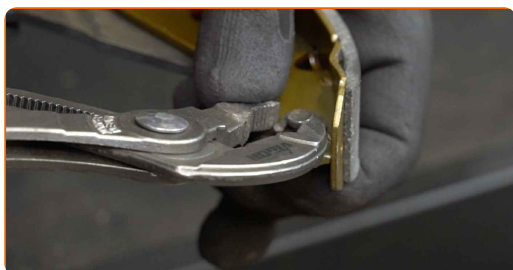
23 Place the new brake shoes into the vice.



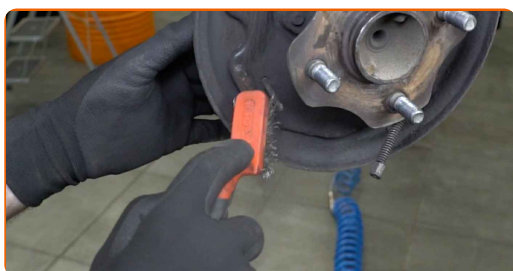
24 Install the brake shoe adjuster lever.



25 Reinstall the brake shoe hold-down cup. Use water pump pliers.

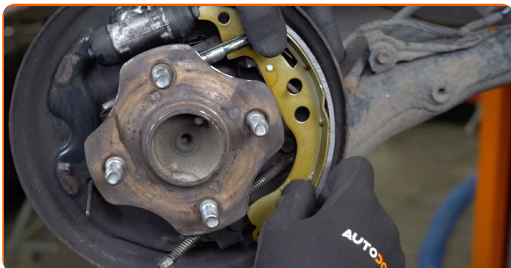


26 Clean the mounting seats of the brake shoes. Use a wire brush. Use all-purpose cleaning spray.



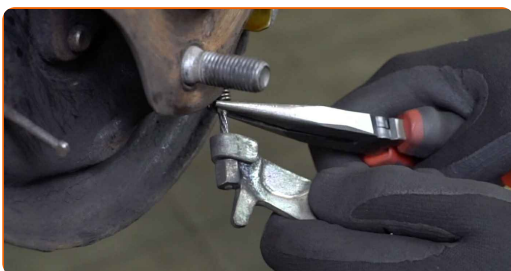
27 Loosen the vice and remove the brake shoes.

28 Install the brake shoe together with the upper return spring.



29 Reinstall the brake shoe hold-down pin. Use a brake shoe retaining spring compressor.

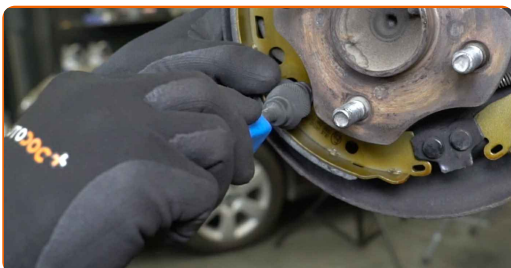
30 Connect the parking brake cable to the parking brake lever.



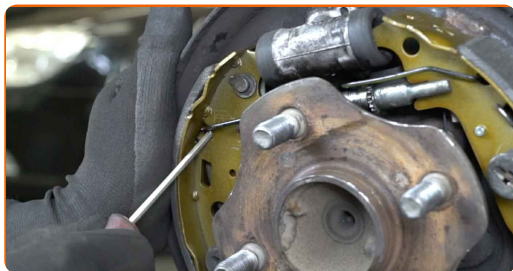
31 Install the brake shoe. Use a flat screwdriver.



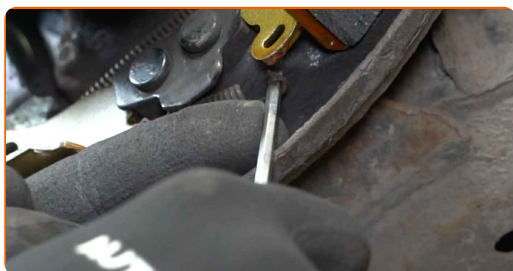
32 Reinstall the brake shoe hold-down pin. Use a brake shoe retaining spring compressor.



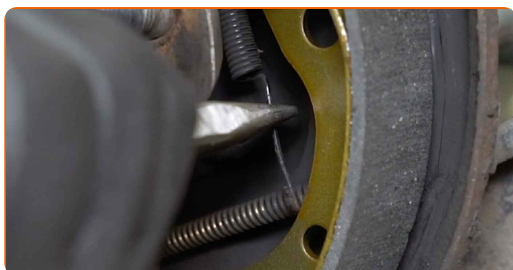
33 Install the upper return spring. Use a flat screwdriver.



34 Install the lower return spring. Use a flat screwdriver.



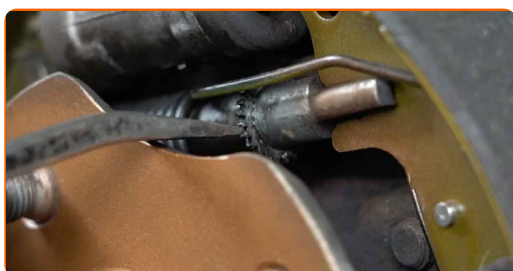
35 Install the hold-down spring. Use round-nose pliers.



36 Clean the hub. Use a wire brush. Treat the contacting surface. Use copper grease.



37 Move the parking brake shoes against the drum.



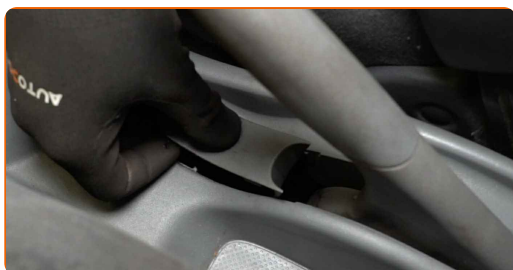
38 Install a brake drum.



39 Adjust the parking brake cable tension. Use a combination spanner #10. Use a ratchet wrench.



40 Reinstall the cap of the parking brake cable fastener.



41 Clean the wheel rim mounting seat. Use a wire brush.



42 Treat the surface where the wheel rim contacts the brake drum. Use copper grease.



43 Install the wheel.



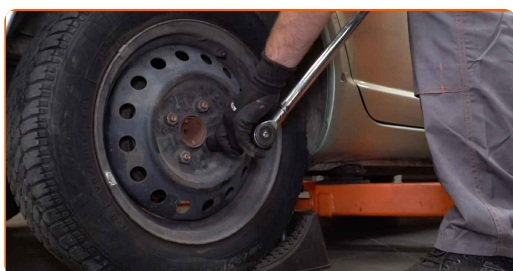
AUTODOC recommends:

- Warning! To avoid injury, hold the wheel while screwing in the fastening bolts on the car. TOYOTA Echo Saloon (_P1_)

44 Screw in the wheel bolts. Use wheel impact socket #21.

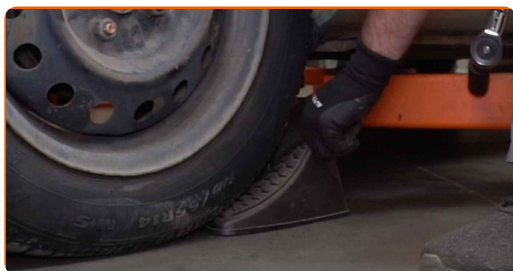


45 Lower the car and working in a cross order, tighten the wheel bolts. Use wheel impact socket #21. Use a torque wrench. Tighten it to 103 Nm torque.



46

Remove the jacks and chocks.



47

Tighten the brake fluid reservoir cap. Close the hood.



Replacement: brake shoes – TOYOTA Echo Saloon (_P1_). Professionals recommend:

- Slow down gently for the first 150–200 km after replacing the brake shoes. Avoid excessive and abrupt braking during that time.

WELL DONE! 

VIEW MORE TUTORIALS

AUTODOC – TOP QUALITY AND AFFORDABLE CAR PARTS ONLINE

AUTODOC MOBILE APP: GREAT DEALS AND CONVENIENT SHOPPING



+ AUTODOC

GET IT ON
Google Play

Download on the
App Store

Download

A GREAT SELECTION OF SPARE PARTS FOR YOUR CAR

BRAKE SHOES: A WIDE SELECTION

DISCLAIMER:

The document contains only general recommendations that may be useful for you when you perform repair or replacement work. AUTODOC shall not be liable for any loss, injury, damage of property occurring in the repair or replacement process due to incorrect use or misinterpretation of the provided information.

AUTODOC shall not be liable for any possible mistakes and uncertainties in this guide. The information provided is for information purposes only and cannot replace advice from specialists.

AUTODOC shall not be liable for incorrect or hazardous usage of equipment, tools and car parts. AUTODOC strongly recommends to be careful and observe the safety rules when performing repair or replacement works. Remember: usage of low quality auto parts does not guarantee you the appropriate level of road safety.

© Copyright 2023 – All the contents of this website, in particular texts, photographs and graphics, are protected by copyright. All rights, including reproduction, publication, editing and translation rights, are reserved by AUTODOC SE.