



How to change rear
wheel bearing on
TOYOTA COROLLA
(ZZE12_, NDE12_, ZDE12_)
– replacement guide

SIMILAR VIDEO TUTORIAL



This video shows the replacement procedure of a similar car part on another vehicle

Important!

This replacement procedure can be used for:

TOYOTA COROLLA (ZZE12_, NDE12_, ZDE12_) 1.4 VVT-i (ZZE120_), TOYOTA COROLLA (ZZE12_, NDE12_, ZDE12_) 1.4 D (NDE120_)

The steps may slightly vary depending on the car design.

This tutorial was created based on the replacement procedure for a similar car part on: TOYOTA RAV 4 II (CLA2_, XA2_, ZCA2_, ACA2_) 2.0 4WD (ACA21, ACA20)

REPLACEMENT: WHEEL BEARING – TOYOTA COROLLA (ZZE12_, NDE12_, ZDE12_). TOOLS YOU MIGHT NEED:



- Wire brush
- WD-40 spray
- All-purpose cleaning spray
- Brake cleaner
- Ceramic grease
- Copper grease
- Torque wrench
- Drive socket # 14
- Drive socket # 30
- Wheel impact socket #19
- Ratchet wrench
- Flat screwdriver
- Long nose pliers
- Crow bar
- Hydraulic transmission jack
- Wheel chock

Buy tools

AUTODOC recommends:

- Do not re-use the bearing assembly of your TOYOTA COROLLA (ZZE12_, NDE12_, ZDE12_) car.
- The wheel hub bearing replacement procedure is identical for both wheels on the same axle.
- Please note: all work on the car – TOYOTA COROLLA (ZZE12_, NDE12_, ZDE12_) – should be done with the engine switched off.

CARRY OUT REPLACEMENT IN THE FOLLOWING ORDER:

1 Secure the wheels with chocks.

2 Loosen the wheel mounting bolts. Use wheel impact socket #19.

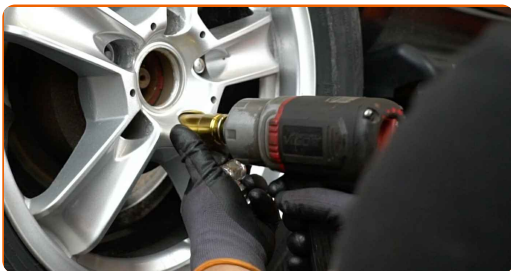


3 Raise the car.

**Replacement: wheel bearing – TOYOTA COROLLA (ZZE12_, NDE12_, ZDE12_).
AUTODOC experts recommend:**

- If you are using a jack, make sure it rests on a flat surface without any unevenness.
- Be sure to additionally secure the car with jack stands.

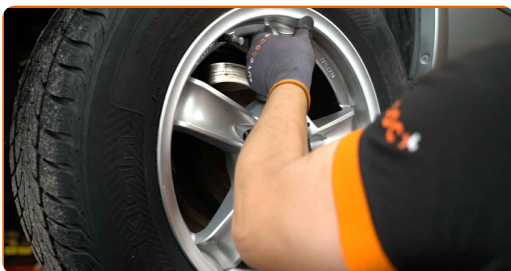
4 Unscrew the wheel bolts.



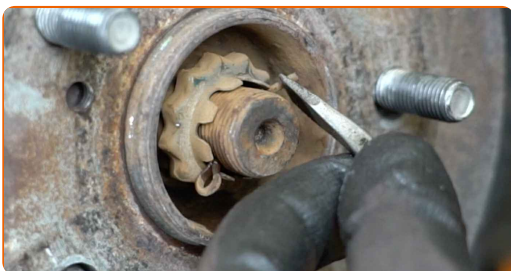
AUTODOC recommends:

- Warning! To avoid injury, hold the wheel while unscrewing the fastening bolts.
TOYOTA COROLLA (ZZE12_, NDE12_, ZDE12_)

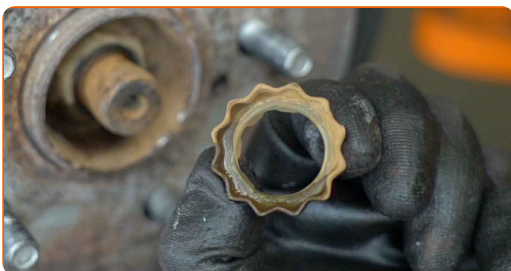
5 Remove the wheel.



6 Remove the cotter pin. Use a crowbar.



7 Remove the wheel hub bearing retaining ring. Use a crowbar.



8 Install the wheel.

AUTODOC recommends:

- Important! Hold the wheel while unscrewing the fastening bolts. TOYOTA COROLLA (ZZE12_, NDE12_, ZDE12_)

9 Screw in the wheel bolts. Use wheel impact socket #19.

10 Lower the car.

11 Loosen the fastener of the driveshaft. Use a drive socket #30.

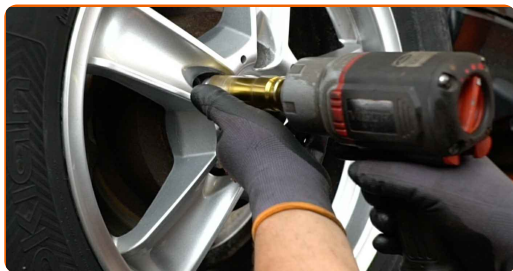


12 Raise the car.

Replacement: wheel bearing – TOYOTA COROLLA (ZZE12_, NDE12_, ZDE12_).
AUTODOC recommends:

- If you are using a jack, make sure it rests on a flat surface without any unevenness.
- Be sure to additionally secure the car with jack stands.

13 Unscrew the wheel bolts.



Replacement: wheel bearing – TOYOTA COROLLA (ZZE12_, NDE12_, ZDE12_).
AUTODOC experts recommend:

- To avoid injury, hold up the wheel when unscrewing the bolts.

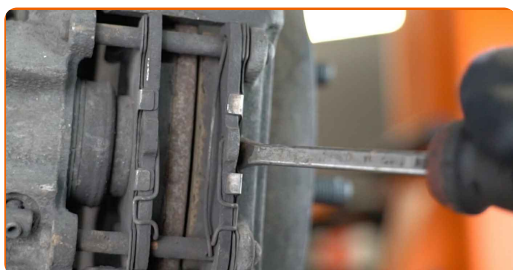
14 Remove the wheel.



15 Detach the brake caliper retaining spring. Use a crowbar.



16 Spread the brake pads. Use a crowbar.



17

Clean the brake caliper fasteners. Use a wire brush. Use WD-40 spray.



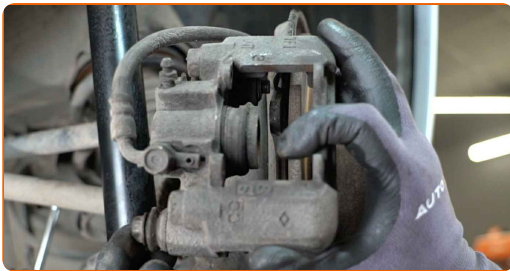
18

Unscrew the brake caliper fasteners. Use a drive socket #14. Use a ratchet wrench.



19

Remove the brake caliper.



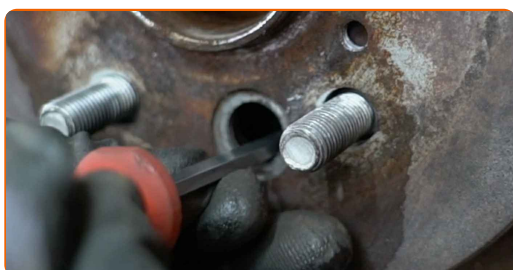
AUTODOC recommends:

- Tie the caliper to the suspension or to the body with a wire without disconnecting from the brake hose to prevent depressurization of the brake system.
- Make sure that the brake caliper is not hanging on the brake hose.
- Don't press the brake pedal after the brake caliper has been removed. As a result, the piston can fall out from the brake cylinder, and brake fluid leakage and depressurization of the system may occur.

20 Remove the rubber plug. Use a crowbar.



21 Release the parking brake adjuster. Use a flat screwdriver.



22 Remove the brake disc.



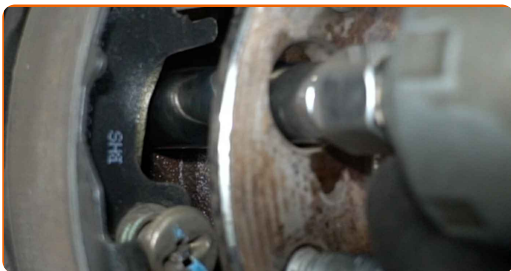
23 Remove the left brake shoe spring of the parking brake. Use long nose pliers. Use a crowbar.



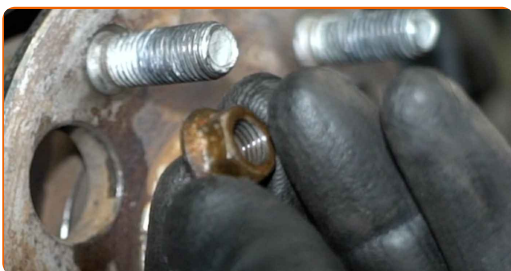
24 Treat the wheel hub bearing fasteners. Use WD-40 spray.



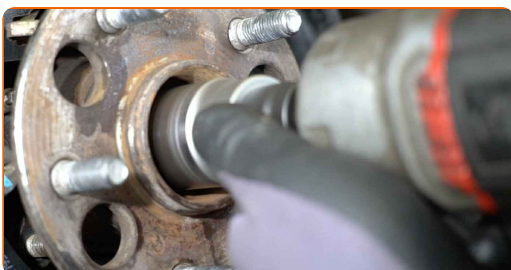
25 Unscrew the wheel hub bearing fasteners. Use a drive socket #14. Use a ratchet wrench.



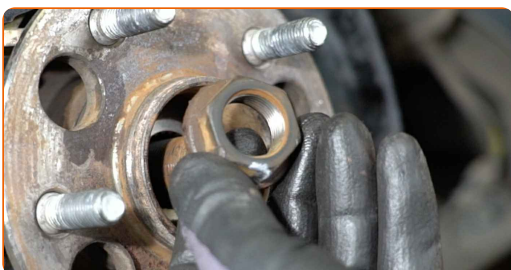
26 Remove the fastening nuts.



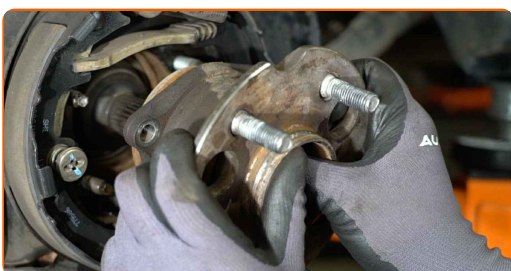
27 Unscrew the fastener connecting the drive shaft to the wheel hub. Use a drive socket #30. Use a ratchet wrench.



28 Remove the fastening nut.



29 Remove the wheel hub bearing.



30 Clean the hub bearing mounting seat. Use a wire brush. Use all-purpose cleaning spray.



31 Treat the splines of the driveshaft CV joint. Use copper grease.

32 Treat the wheel bearing mounting seat. Use copper grease.



33 Install a new wheel hub bearing.



34 Install the fastening nut.



35 Install the fastening nuts.

36 Support the rear knuckle. Use a hydraulic transmission jack.

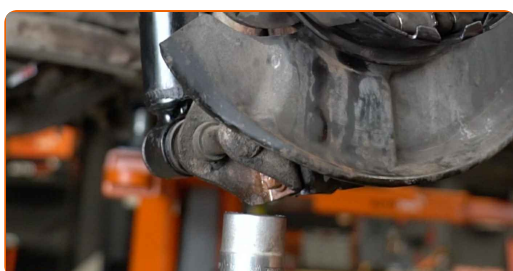
- 37** Tighten the wheel hub bearing fasteners. Use a drive socket #14. Use a torque wrench. Tighten it to 50 Nm torque.



- 38** Screw in the fastener of the CV axle. Use a drive socket #30. Use a ratchet wrench.



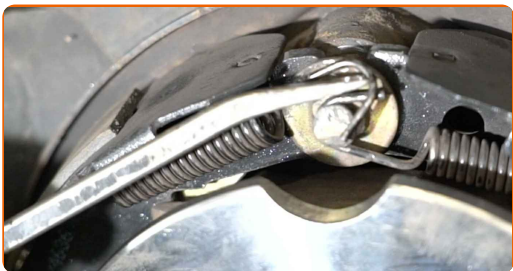
- 39** Remove the support from under the rear knuckle.



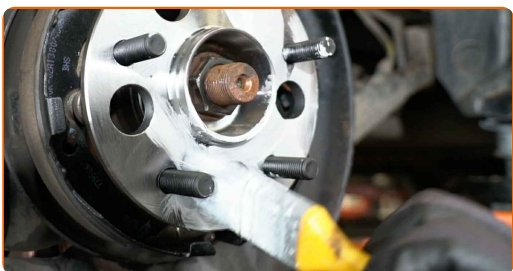
AUTODOC recommends:

- Replacement: wheel bearing – TOYOTA COROLLA (ZZE12_, NDE12_, ZDE12_). Lower the transmission jack smoothly, without jerks, to avoid damaging components and mechanisms.

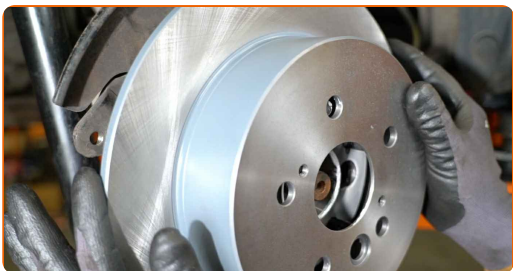
40 Install the left brake shoe spring of the parking brake. Use a crowbar.



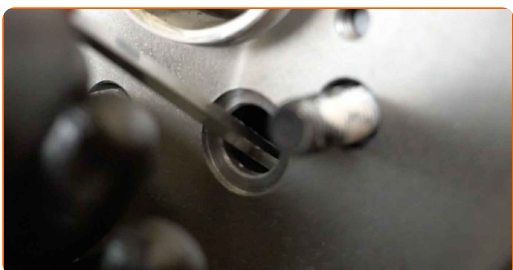
41 Treat the hub where it contacts the brake disk. Use ceramic grease.



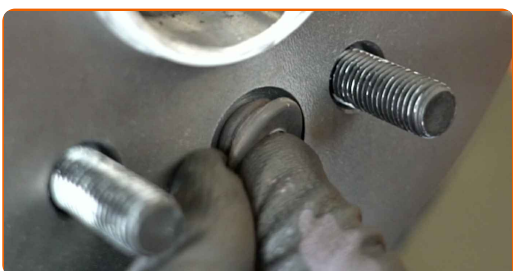
42 Install the brake disc.



43 Set the parking brake adjuster in the correct position. Use a flat screwdriver.



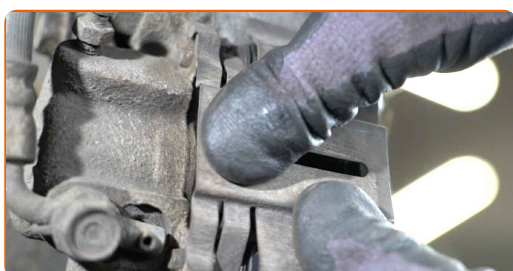
44 Install the rubber plug. Use a crowbar.



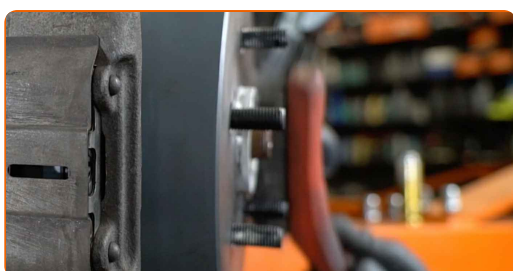
- 45** Install the brake caliper and fix it. Tighten the brake caliper fasteners. Use a drive socket #14. Use a torque wrench. Tighten it to 44 Nm torque.



- 46** Install the brake caliper retaining spring.



- 47** Clean the wheel rim mounting seat. Use a wire brush.



- 48** Treat the surface where the brake disc contacts the wheel rim. Use ceramic grease.



49

Clean the brake disk surface. Use a brake cleaner.



AUTODOC recommends:

- After applying the spray, wait a few minutes.

50

Install the wheel.

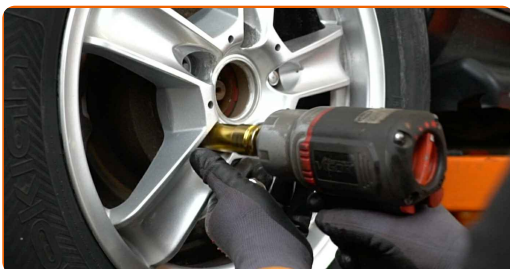


AUTODOC recommends:

- Warning! To avoid injury, hold the wheel while screwing in the fastening bolts on the car. TOYOTA COROLLA (ZZE12_, NDE12_, ZDE12_)

51

Screw in the wheel bolts. Use wheel impact socket #19.



52

Lower the car.

53

Tighten the drive shaft nut. Use a drive socket #30. Use a torque wrench. Tighten it to 216 Nm torque.



54

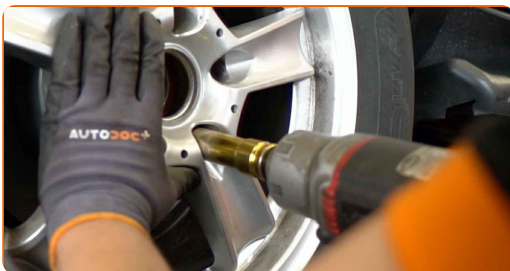
Raise the car.

AUTODOC recommends:

- If you are using a jack, make sure it rests on a flat surface without any unevenness.
- Be sure to additionally secure the car with jack stands.

55

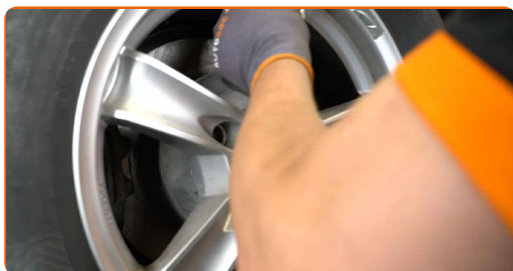
Unscrew the wheel bolts.



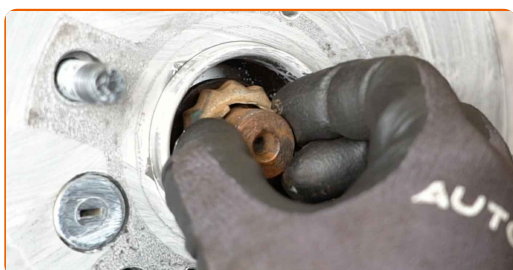
AUTODOC recommends:

- Important! Hold the wheel while screwing in the fastening bolts. TOYOTA COROLLA (ZZE12_, NDE12_, ZDE12_)

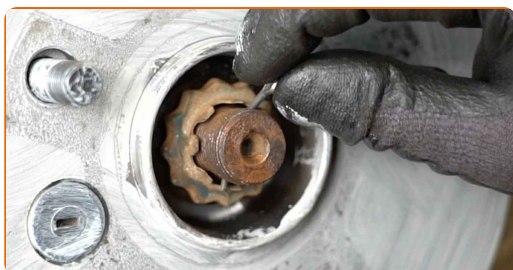
56 Remove the wheel.



57 Install the wheel hub bearing retaining ring.

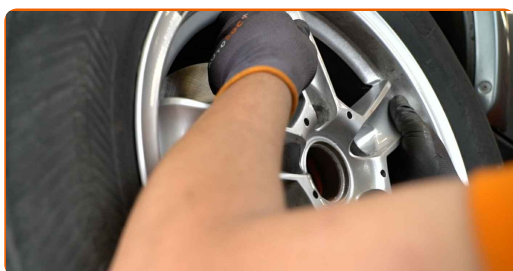


58 Install the cotter pin. Use a crowbar.



59 Treat the CV axle fastener. Use copper grease.

60 Install the wheel.

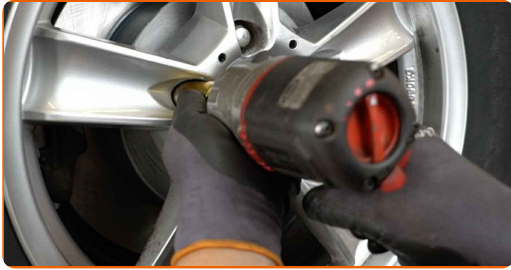


AUTODOC recommends:

- To avoid injury, hold up the wheel when screwing in the fastening bolts.

61

Screw in the wheel bolts. Use wheel impact socket #19.



62

Lower the car and working in a cross order, tighten the wheel bolts. Use wheel impact socket #19. Use a torque wrench. Tighten it to 103 Nm torque.



63

Remove the jacks and chocks.



Replacement: wheel bearing – TOYOTA COROLLA (ZZE12_, NDE12_, ZDE12_).
Professionals recommend:

- Without starting the engine, press the brake pedal several times until you feel significant resistance.
- Check the brake fluid level in the expansion tank and refill if necessary.

WELL DONE! 

[VIEW MORE TUTORIALS](#)

AUTODOC – TOP QUALITY AND AFFORDABLE CAR PARTS ONLINE

AUTODOC MOBILE APP: GREAT DEALS AND CONVENIENT SHOPPING



+ AUTODOC

GET IT ON
Google Play

 Download on the
App Store

Download

A GREAT SELECTION OF SPARE PARTS FOR YOUR CAR

WHEEL BEARING: A WIDE SELECTION

DISCLAIMER:

The document contains only general recommendations that may be useful for you when you perform repair or replacement work. AUTODOC shall not be liable for any loss, injury, damage of property occurring in the repair or replacement process due to incorrect use or misinterpretation of the provided information.

AUTODOC shall not be liable for any possible mistakes and uncertainties in this guide. The information provided is for information purposes only and cannot replace advice from specialists.

AUTODOC shall not be liable for incorrect or hazardous usage of equipment, tools and car parts. AUTODOC strongly recommends to be careful and observe the safety rules when performing repair or replacement works. Remember: usage of low quality auto parts does not guarantee you the appropriate level of road safety.

© Copyright 2022 – All the contents of this website, in particular texts, photographs and graphics, are protected by copyright. All rights, including reproduction, publication, editing and translation rights, are reserved by AUTODOC GmbH.