



How to change front anti
roll bar links on **Suzuki**
Swift MK3 – replacement
guide

VIDEO TUTORIAL



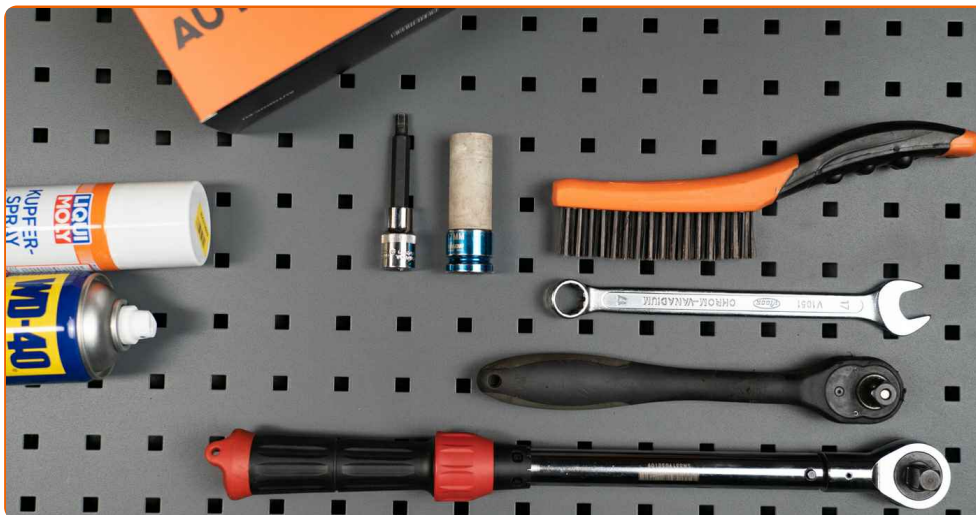
Important!

This replacement procedure can be used for:

SUZUKI SPLASH 1.2 VVT (A5B 412), SUZUKI SPLASH 1.0 (A5B 310), SUZUKI SWIFT III (MZ, EZ) 1.3 (RS 413), SUZUKI SWIFT III (MZ, EZ) 1.3 DDiS (RS 413D), SUZUKI SWIFT III (MZ, EZ) 1.3 4x4 (RS 413), SUZUKI SWIFT III (MZ, EZ) 1.6 (RS 416), SUZUKI SWIFT III (MZ, EZ) 1.5 4x4 (RS 415), SUZUKI SPLASH 1.2 (A5B 412), SUZUKI SPLASH 1.3 CDTI (A5B 413D), SUZUKI SPLASH 1.2, SUZUKI SWIFT III (MZ, EZ) 1.3 (RS413), SUZUKI SWIFT III (MZ, EZ) 1.2, SUZUKI SWIFT III (MZ, EZ) 1.3 4WD (RS 413), SUZUKI SPLASH 1.2 LPG, SUZUKI SWIFT III (MZ, EZ) 1.3 LPG (RS 413)

The steps may slightly vary depending on the car design.

REPLACEMENT: ANTI ROLL BAR LINKS – SUZUKI SWIFT MK3. TOOLS YOU MIGHT NEED:



- Wire brush
- WD-40 spray
- Copper grease
- Combination spanner #14
- HEX bit no.H6.
- Wheel impact socket #21
- Ratchet wrench
- Torque wrench
- Wheel chock

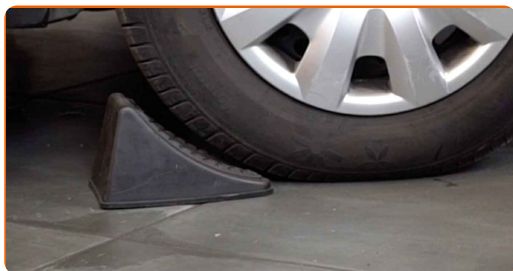
BUY TOOLS

AUTODOC recommends:

- Replace the stabiliser links on Suzuki Swift MK3 in pairs.
- The replacement procedure is identical for both stabiliser links on the same axle.
- Please note: all work on the car – Suzuki Swift MK3 – should be done with the engine switched off.

CARRY OUT REPLACEMENT IN THE FOLLOWING ORDER:

1 Secure the wheels with chocks.



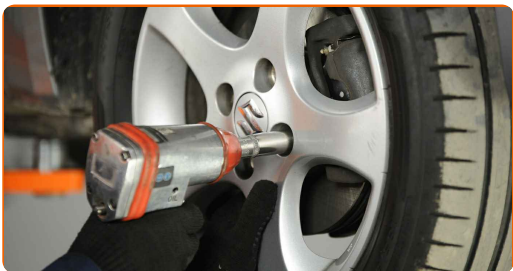
2 Loosen the wheel mounting bolts. Use wheel impact socket #21.



3 Raise the front of the car and secure on supports.

4

Unscrew the wheel bolts.



AUTODOC recommends:

- Important! Hold the wheel while unscrewing the fastening bolts. Suzuki Swift MK3

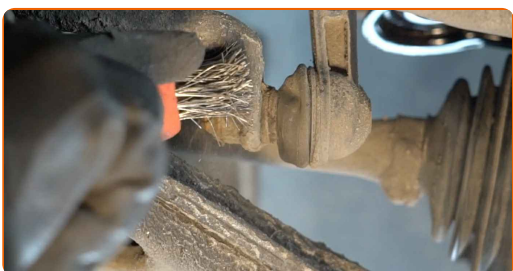
5

Remove the wheel.

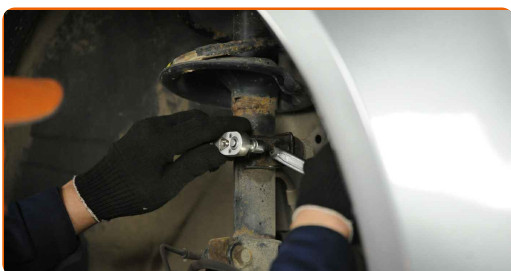


6

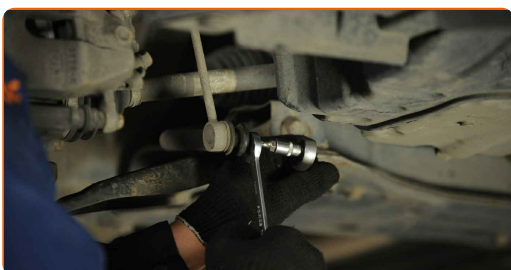
Clean the stabiliser link fasteners. Use a wire brush. Use WD-40 spray.



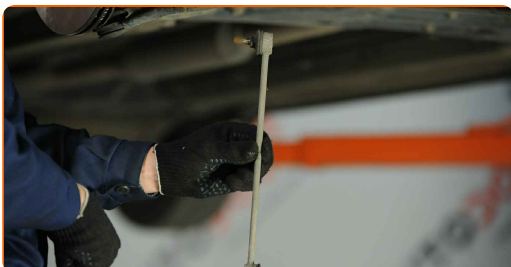
- 7 Unscrew the fastener connecting the stabilizer link to the shock strut. Use a combination spanner #14. Use HEX No.H6. Use a ratchet wrench.



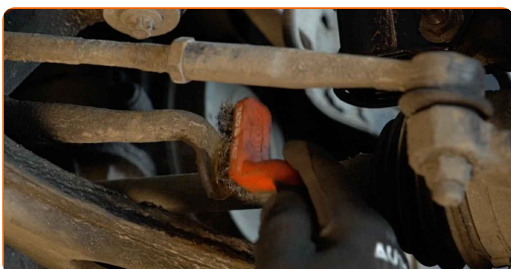
- 8 Unscrew the fastener connecting the stabilizer link to the stabilizer bar. Use a combination spanner #14. Use HEX No.H6. Use a ratchet wrench.



- 9 Remove the stabilizer rod.



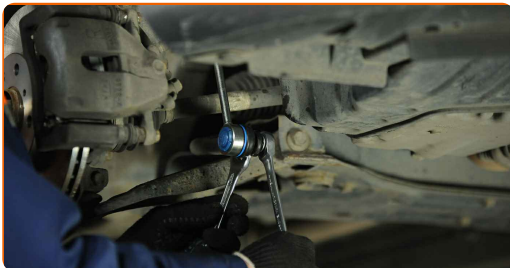
- 10 Clean the mounting seats of the stabiliser link. Use a wire brush. Use WD-40 spray.



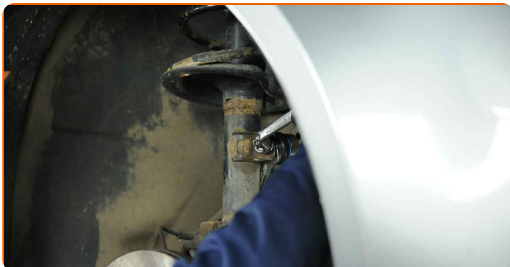
11 Install a new rod, tighten the fasteners.



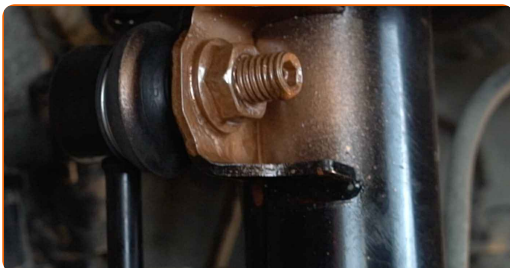
12 Tighten the fastener connecting the stabilizer link to the stabilizer bar. Use a combination spanner #14. Use HEX No.H6. Use a torque wrench. Tighten it to 50 Nm torque.



13 Tighten the fastener connecting the stabilizer link to the shock strut. Use a combination spanner #14. Use HEX No.H6. Use a torque wrench. Tighten it to 50 Nm torque.



14 Treat all joints of the stabiliser link. Use copper grease.



15 Treat the surface where the brake disc contacts the wheel rim. Use copper grease.



16 Clean the brake disk surface. Use a brake cleaner.



AUTODOC recommends:

- Replacement: anti roll bar links – Suzuki Swift MK3. After applying the spray, wait a few minutes.

17 Install the wheel.



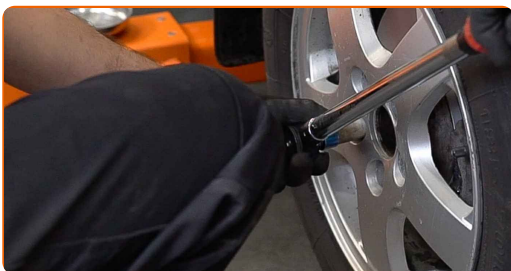
AUTODOC recommends:

- Warning! To avoid injury, hold the wheel while screwing in the fastening bolts on the car. Suzuki Swift MK3

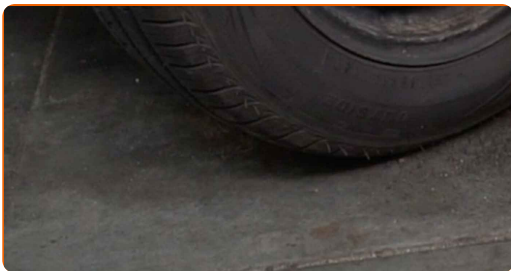
18 Screw in the wheel bolts. Use wheel impact socket #21.



19 Lower the car and working in a cross order, tighten the wheel bolts. Use wheel impact socket #21. Use a torque wrench. Tighten it to 85 nm torque.



20 Remove the jacks and chocks.



WELL DONE! 

VIEW MORE TUTORIALS

AUTODOC – TOP QUALITY AND AFFORDABLE CAR PARTS ONLINE

AUTODOC MOBILE APP: GREAT DEALS AND CONVENIENT SHOPPING



+ AUTODOC

GET IT ON  **Google Play**

 **Download on the App Store**

Download

A GREAT SELECTION OF SPARE PARTS FOR YOUR CAR

BUY SPARE PARTS FOR SUZUKI

ANTI ROLL BAR LINKS: A WIDE SELECTION

CHOOSE CAR PARTS FOR SUZUKI SWIFT MK3

ANTI ROLL BAR LINKS FOR SUZUKI: BUY NOW

ANTI ROLL BAR LINKS FOR SUZUKI SWIFT MK3: THE BEST DEALS & OFFERS

DISCLAIMER:

The document contains only general recommendations that may be useful for you when you perform repair or replacement work. AUTODOC shall not be liable for any loss, injury, damage of property occurring in the repair or replacement process due to incorrect use or misinterpretation of the provided information.

AUTODOC shall not be liable for any possible mistakes and uncertainties in this guide. The information provided is for information purposes only and cannot replace advice from specialists.

AUTODOC shall not be liable for incorrect or hazardous usage of equipment, tools and car parts. AUTODOC strongly recommends to be careful and observe the safety rules when performing repair or replacement works. Remember: usage of low quality auto parts does not guarantee you the appropriate level of road safety.

© Copyright 2022 – All the contents of this website, in particular texts, photographs and graphics, are protected by copyright. All rights, including reproduction, publication, editing and translation rights, are reserved by AUTODOC GmbH.