



How to change track rod  
end on **SUZUKI Wagon  
R+ Hatchback (MM)** –  
replacement guide

## SIMILAR VIDEO TUTORIAL



This video shows the replacement procedure of a similar car part on another vehicle

### Important!

This replacement procedure can be used for:

SUZUKI Wagon R+ Hatchback (MM) 1.3 (RB 413), SUZUKI Wagon R+ Hatchback (MM) 1.3 4WD (RB 413), SUZUKI Wagon R+ Hatchback (MM) 1.3 DDiS (RB 413D)

The steps may slightly vary depending on the car design.

This tutorial was created based on the replacement procedure for a similar car part on: SUZUKI SWIFT III (MZ, EZ) 1.5 (RS 415)

**REPLACEMENT: TRACK ROD END – SUZUKI WAGON R+ HATCHBACK (MM). TOOLS YOU MIGHT NEED:**



- Wire brush
- WD-40 spray
- Brake cleaner
- Copper grease
- Combination spanner #19
- Drive socket # 17
- Drive socket # 18
- Wheel impact socket #21
- Ratchet wrench
- Torque wrench
- Vernier caliper
- Ball joint puller
- Wheel chock

**Buy tools**

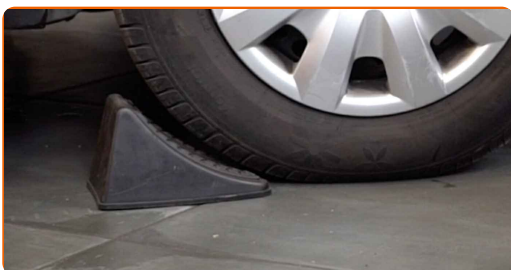
Replacement: track rod end – SUZUKI Wagon R+ Hatchback (MM). Tip from AUTODOC:

- Replace tie rod ends in pairs.
- The replacement procedure is identical for the right and left tie rod ends.
- All work should be done with the engine stopped.

## REPLACEMENT: TRACK ROD END – SUZUKI WAGON R+ HATCHBACK (MM). USE THE FOLLOWING PROCEDURE:

1

Secure the wheels with chocks.



2

Loosen the wheel mounting bolts. Use wheel impact socket #21.



3

Raise the front of the car and secure on supports.

**4** Unscrew the wheel bolts.



**AUTODOC recommends:**

- Important! Hold the wheel while unscrewing the fastening bolts. SUZUKI Wagon R+ Hatchback (MM)

**5** Remove the wheel.



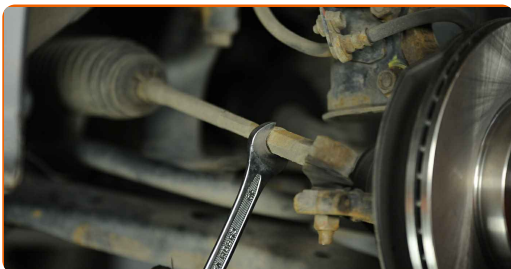
**6** When deinstalling, mark or measure the precise position of the ball joint on the track rod, or count the number of turns in order to prevent misalignment afterward. Use a vernier caliper.



**7** Clean the lock nut that connects the tie rod to the tie rod end. Use a wire brush. Use WD-40 spray.

8

Loosen the lock nut securing the tie rod end to the tie rod. Use a combination spanner #19.

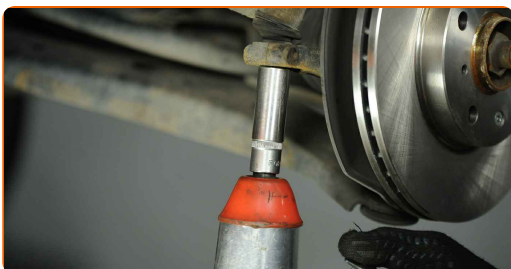


9

Clean the fastener connecting the tie rod end to the steering knuckle. Use a wire brush. Use WD-40 spray.

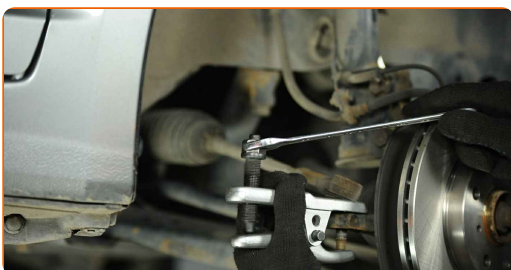
10

Unscrew the end fastening nut to the steering knuckle. Use a drive socket #17. Use a ratchet wrench.



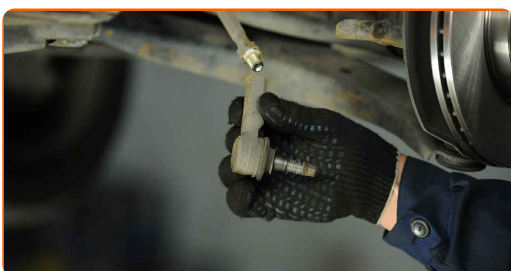
11

Disconnect the tie rod end from the steering knuckle. Use a ball joint puller.



12

Screw the end out of the tie rod.



**13** Clean the mounting seats of the tie rod end. Use a wire brush. Use WD-40 spray.



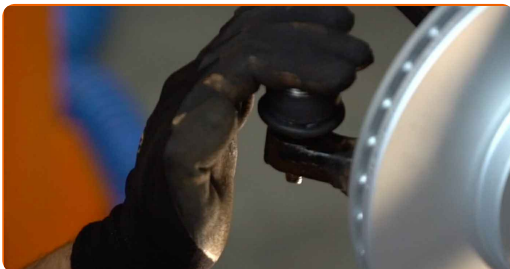
**14** Screw on a new tie rod end.



Replacement: track rod end – SUZUKI Wagon R+ Hatchback (MM). Tip:

- While installing the steering rod end remember to make the same number of turns or to leave the same length of thread showing as per your measurements.

**15** Connect the tie rod end to the steering knuckle.



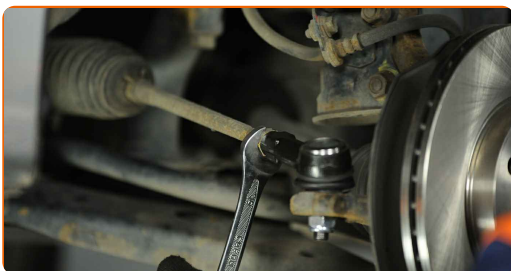
**16**

Tighten the fastening nut connecting the tie rod end to the steering knuckle. Use a drive socket #18. Use a torque wrench. Tighten it to 45 nm torque.



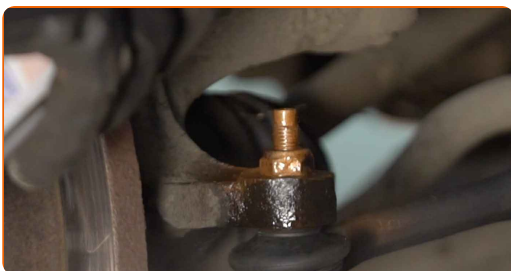
**17**

Tighten the tie rod end locknut. Use a combination spanner #19. Use a torque wrench. Tighten it to 65 nm torque.



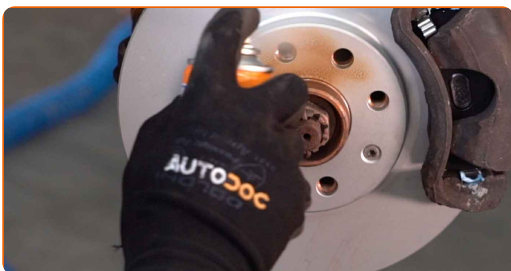
**18**

Treat the fastener connecting the tie rod end to the steering knuckle. Use copper grease.



**19**

Treat the surface where the brake disc contacts the wheel rim. Use copper grease.





20

Clean the brake disk surface. Use a brake cleaner.



**AUTODOC recommends:**

- Replacement: track rod end – SUZUKI Wagon R+ Hatchback (MM). After applying the spray, wait a few minutes.

21

Install the wheel.



**AUTODOC recommends:**

- Warning! To avoid injury, hold the wheel while screwing in the fastening bolts on the car. SUZUKI Wagon R+ Hatchback (MM)

22

Screw in the wheel bolts. Use wheel impact socket #21.



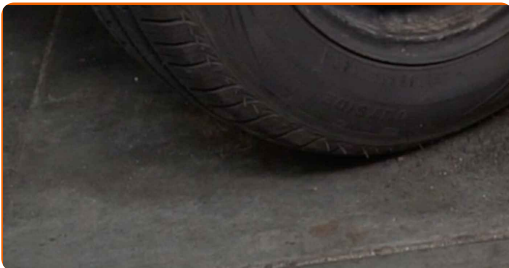
- 23** Lower the car and working in a cross order, tighten the wheel bolts. Use wheel impact socket #21. Use a torque wrench. Tighten it to 85 nm torque.



Replacement: track rod end – SUZUKI Wagon R+ Hatchback (MM). Tip:

- Check and adjust wheel alignment if necessary.

- 24** Remove the jacks and chocks.



**WELL DONE!** 

**VIEW MORE TUTORIALS**

# AUTODOC – TOP QUALITY AND AFFORDABLE CAR PARTS ONLINE

**AUTODOC MOBILE APP: GREAT DEALS AND CONVENIENT SHOPPING**



**+ AUTODOC**

GET IT ON  
**Google Play**

Download on the  
**App Store**

**Download**

**A GREAT SELECTION OF SPARE PARTS FOR YOUR CAR**

**TRACK ROD END: A WIDE SELECTION**

## **DISCLAIMER:**

The document contains only general recommendations that may be useful for you when you perform repair or replacement work. AUTODOC shall not be liable for any loss, injury, damage of property occurring in the repair or replacement process due to incorrect use or misinterpretation of the provided information.

AUTODOC shall not be liable for any possible mistakes and uncertainties in this guide. The information provided is for information purposes only and cannot replace advice from specialists.

AUTODOC shall not be liable for incorrect or hazardous usage of equipment, tools and car parts. AUTODOC strongly recommends to be careful and observe the safety rules when performing repair or replacement works. Remember: usage of low quality auto parts does not guarantee you the appropriate level of road safety.

© Copyright 2022 – All the contents of this website, in particular texts, photographs and graphics, are protected by copyright. All rights, including reproduction, publication, editing and translation rights, are reserved by AUTODOC GmbH.