



How to change pollen
filter on **SKODA Yeti (5L)**
– replacement guide

SIMILAR VIDEO TUTORIAL



This video shows the replacement procedure of a similar car part on another vehicle

i Important!

This replacement procedure can be used for:

SKODA YETI (5L) 1.6 TDI, SKODA YETI (5L) 1.8 TSI 4x4, SKODA YETI (5L) 2.0 TDI, SKODA YETI (5L) 1.2 TSI, SKODA YETI (5L) 2.0 TDI 4x4, SKODA YETI (5L) 1.4 TSI, SKODA YETI (5L) 1.6, SKODA YETI (5L) 1.4 TSI 4x4

The steps may slightly vary depending on the car design.

This tutorial was created based on the replacement procedure for a similar car part on: SKODA Octavia II Combi (1Z5) 1.8 TSI

Replacement: pollen filter – SKODA Yeti (5L). AUTODOC experts recommend:

- Replace the cabin filter at least once every six months, in early spring and autumn seasons.
- Follow the terms, recommendations and requirements of the part operation provided by the manufacturer.
- If the air flow into the cabin has sharply reduced, replace the filter before a scheduled maintenance.
- All work should be done with the engine stopped.

CARRY OUT REPLACEMENT IN THE FOLLOWING ORDER:

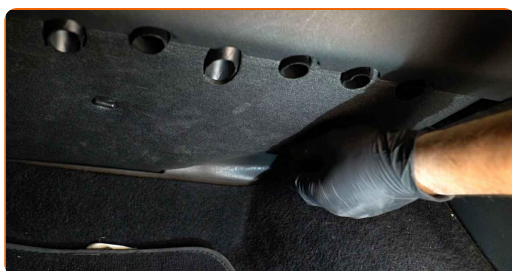
1

Move the passenger seat fully backwards.



2

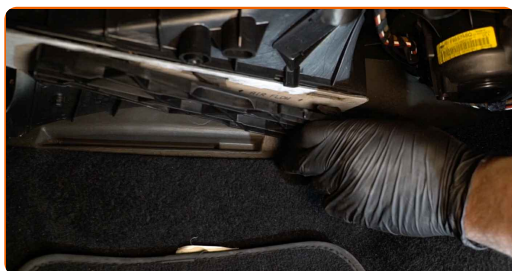
Unscrew the fasteners securing the bottom liner in the passenger footwell.



3 Remove the bottom liner.



4 Remove the pollen filter housing cover.



5 Remove the pollen filter.



Replacement: pollen filter – SKODA Yeti (5L). Professionals recommend:

- Do not attempt to clean and reuse the filter – it will affect the quality of air purification inside the car.

6 Install the new pollen filter in its mounting seat.



AUTODOC recommendation:

- Replacement: pollen filter – SKODA Yeti (5L). Ensure the filtering element is positioned correctly. Avoid misalignment.
- Check the markings on the edge of the filter to ensure you are installing it the right way around.
- Attention! Use quality filters for SKODA Yeti (5L).

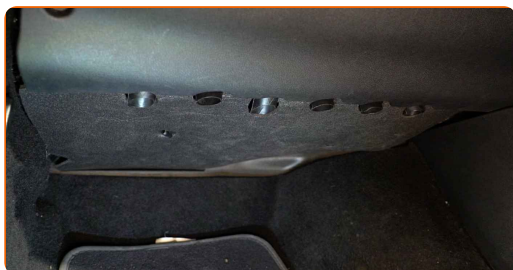
7

Reinstall the pollen filter housing cover. Make sure you hear a click indicating that it is locked in place.



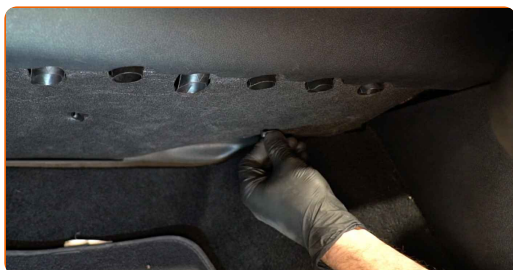
8

Reinstall the bottom liner.



9

Screw in the fasteners for the bottom liner.



- 10 Return the passenger seat to its original position.



- 11 Switch on the ignition.

- 12 Turn on the air conditioning system. This is necessary to ensure that the component works properly.

- 13 Switch off the ignition.

WELL DONE! 

VIEW MORE TUTORIALS

AUTODOC – TOP QUALITY AND AFFORDABLE CAR PARTS ONLINE

AUTODOC MOBILE APP: GREAT DEALS AND CONVENIENT SHOPPING





 GET IT ON
Google Play

 Download on the
App Store

Download

A GREAT SELECTION OF SPARE PARTS FOR YOUR CAR

POLLEN FILTER: A WIDE SELECTION

DISCLAIMER:

The document contains only general recommendations that may be useful for you when you perform repair or replacement work. AUTODOC shall not be liable for any loss, injury, damage of property occurring in the repair or replacement process due to incorrect use or misinterpretation of the provided information.

AUTODOC shall not be liable for any possible mistakes and uncertainties in this guide. The information provided is for information purposes only and cannot replace advice from specialists.

AUTODOC shall not be liable for incorrect or hazardous usage of equipment, tools and car parts. AUTODOC strongly recommends to be careful and observe the safety rules when performing repair or replacement works. Remember: usage of low quality auto parts does not guarantee you the appropriate level of road safety.

© Copyright 2023 – All the contents of this website, in particular texts, photographs and graphics, are protected by copyright. All rights, including reproduction, publication, editing and translation rights, are reserved by AUTODOC SE.