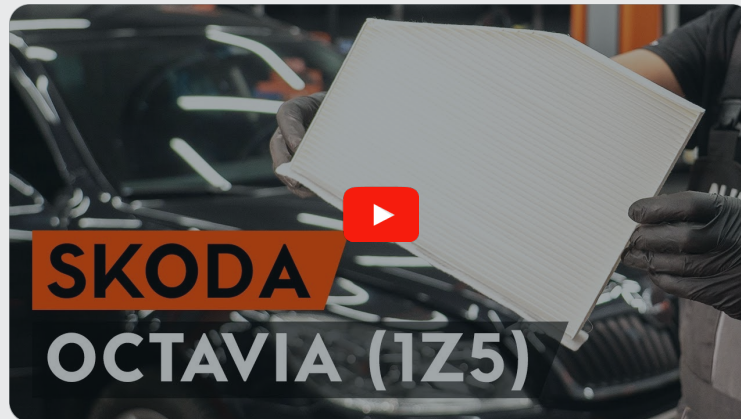




How to change pollen
filter on **SKODA Superb II**
Estate (3T5) –
replacement guide

SIMILAR VIDEO TUTORIAL



This video shows the replacement procedure of a similar car part on another vehicle

Important!

This replacement procedure can be used for:

SKODA Superb II Estate (3T5) 1.8 TSI, SKODA Superb II Estate (3T5) 1.8 TSI 4x4, SKODA Superb II Estate (3T5) 2.0 TSI, SKODA Superb II Estate (3T5) 1.6 TDI, SKODA Superb II Estate (3T5) 2.0 TDI 16V 4x4, SKODA Superb II Estate (3T5) 1.9 TDI, SKODA Superb II Estate (3T5) 1.4 TSI, SKODA Superb II Estate (3T5) 3.6 V6 4x4, SKODA Superb II Estate (3T5) 2.0 TDI 16V, SKODA Superb II Estate (3T5) 2.0 TDI, SKODA Superb II Estate (3T5) 2.0 TDI 4x4

The steps may slightly vary depending on the car design.

This tutorial was created based on the replacement procedure for a similar car part on: SKODA Octavia II Combi (1Z5) 1.8 TSI

Replacement: pollen filter – SKODA Superb II Estate (3T5). AUTODOC experts recommend:

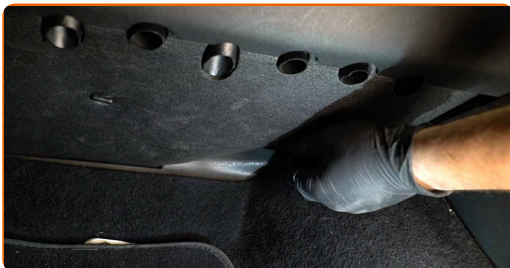
- Replace the cabin filter at least once every six months, in early spring and autumn seasons.
- Follow the terms, recommendations and requirements of the part operation provided by the manufacturer.
- If the air flow into the cabin has sharply reduced, replace the filter before a scheduled maintenance.
- All work should be done with the engine stopped.

CARRY OUT REPLACEMENT IN THE FOLLOWING ORDER:

- 1** Move the passenger seat fully backwards.



- 2** Remove the clips of the bottom trim panel.



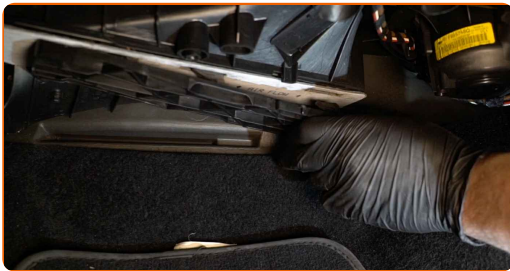
3

Remove the bottom cover of the glove box.



4

Raise a little the cabin filter housing cover.



5

Remove the cabin filter.



Replacement: pollen filter – SKODA Superb II Estate (3T5). Professionals recommend:

- Do not attempt to clean and reuse the filter - it will affect the quality of air cleaning inside the car.

6

Install the cabin filter to its mounting seat.



AUTODOC recommends:

- Replacement: pollen filter – SKODA Superb II Estate (3T5). Be sure to position the filtering element correctly. Avoid misalignment.
- Follow the air flow direction arrow on the filter.
- Attention! Use quality filters – SKODA Superb II Estate (3T5).

7

Reinstall the cabin filter housing cover. Make sure you hear a click indicating that it is locked in place.



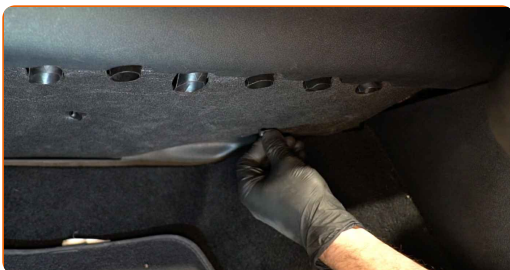
8

Install the glove box bottom cover.



9

Install the clips of the bottom trim panel.



10

Return the passenger seat to its initial position.



11

Switch on the ignition.

12

Switch on the air conditioning system. This is necessary in order to make sure that the component operates properly.

13

Switch off the ignition.

WELL DONE! 👍

[VIEW MORE TUTORIALS](#)

AUTODOC – TOP QUALITY AND AFFORDABLE CAR PARTS ONLINE

AUTODOC MOBILE APP: GREAT DEALS AND CONVENIENT SHOPPING



AUTODOC

GET IT ON
 **Google Play**

Download on the
 **App Store**

Download

A GREAT SELECTION OF SPARE PARTS FOR YOUR CAR

POLLEN FILTER: A WIDE SELECTION

DISCLAIMER:

The document contains only general recommendations that may be useful for you when you perform repair or replacement work. AUTODOC shall not be liable for any loss, injury, damage of property occurring in the repair or replacement process due to incorrect use or misinterpretation of the provided information.

AUTODOC shall not be liable for any possible mistakes and uncertainties in this guide. The information provided is for information purposes only and cannot replace advice from specialists.

AUTODOC shall not be liable for incorrect or hazardous usage of equipment, tools and car parts. AUTODOC strongly recommends to be careful and observe the safety rules when performing repair or replacement works. Remember: usage of low quality auto parts does not guarantee you the appropriate level of road safety.

© Copyright 2022 – All the contents of this website, in particular texts, photographs and graphics, are protected by copyright. All rights, including reproduction, publication, editing and translation rights, are reserved by AUTODOC GmbH.