



How to change rear
wheel bearing on **SKODA
SUPERB Estate (3T5)** –
replacement guide

SIMILAR VIDEO TUTORIAL



This video shows the replacement procedure of a similar car part on another vehicle

Important!

This replacement procedure can be used for:

SKODA SUPERB Estate (3T5) 1.8 TSI, SKODA SUPERB Estate (3T5) 2.0 TSI, SKODA SUPERB Estate (3T5) 1.6 TDI, SKODA SUPERB Estate (3T5) 1.9 TDI, SKODA SUPERB Estate (3T5) 1.4 TSI, SKODA SUPERB Estate (3T5) 2.0 TDI 16V, SKODA SUPERB Estate (3T5) 2.0 TDI

The steps may slightly vary depending on the car design.

This tutorial was created based on the replacement procedure for a similar car part on: VW Passat Saloon (362) 2.0 TDI

REPLACEMENT: WHEEL BEARING – SKODA SUPERB ESTATE (3T5). TOOLS YOU NEED:



- Wire brush
- WD-40 spray
- Brake cleaner
- All-purpose cleaning spray
- Sealant
- Copper grease
- Torque wrench
- XZN socket bit # 14
- XZN socket bit # 18
- Torx bit T27
- Torx bit T30
- Wheel impact socket #17
- Tap wrench
- Hammer
- Rubber mallet
- Impact screwdriver
- Bush and bearing driver set
- Crow bar
- Wheel chock

Buy tools

AUTODOC recommends:

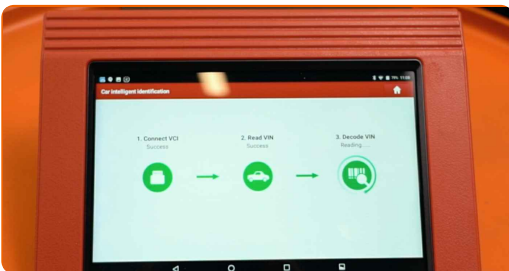
- Do not re-use the bearing assembly of your SKODA SUPERB Estate (3T5) car.
- The wheel hub bearing replacement procedure is identical for both wheels on the same axle.
- Please note: all work on the car – SKODA SUPERB Estate (3T5) – should be done with the engine switched off.

CARRY OUT REPLACEMENT IN THE FOLLOWING ORDER:

1 Connect the scan and service tool.



2 Put the parking brake system into service mode.



3 Open the hood.

4 Clean the brake fluid reservoir cap. Use a brake cleaner.

AUTODOC recommends:

- Replacement: wheel bearing – SKODA SUPERB Estate (3T5). After applying the spray, wait a few minutes.

5

Unscrew the engine solenoid valve bracket. Use Torx T27. Use a ratchet wrench.



6

Unscrew the brake fluid reservoir cap.



7

Secure the wheels with chocks.

8

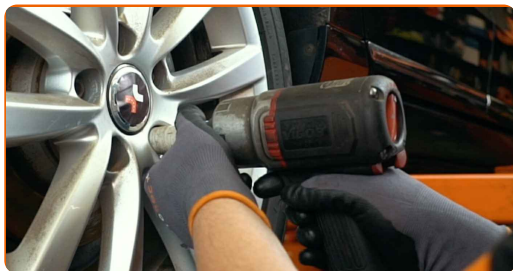
Loosen the wheel mounting bolts. Use wheel impact socket #17.



9

Raise the rear of the car and secure on supports.

10 Unscrew the wheel bolts.



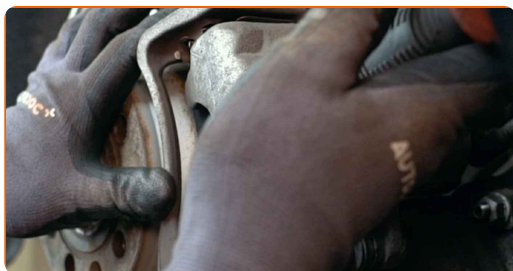
AUTODOC recommends:

- Warning! To avoid injury, hold the wheel while unscrewing the fastening bolts.
SKODA SUPERB Estate (3T5)

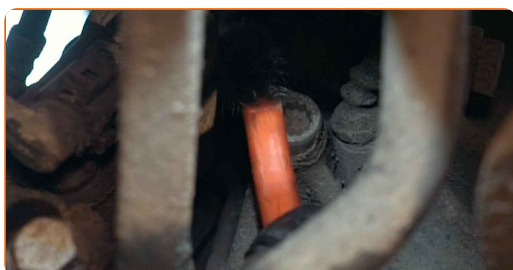
11 Remove the wheel.



12 Spread the brake pads. Use a crowbar.



13 Clean the brake caliper bracket fasteners. Use a wire brush. Use WD-40 spray.



14

Unscrew the caliper bracket fastening. Use XZN #14. Use a tap wrench.



15

Remove the brake caliper together with its bracket.



Replacement: wheel bearing – SKODA SUPERB Estate (3T5). Professionals recommend:

- Tie the caliper to the suspension or to the body with a wire without disconnecting from the brake hose to prevent depressurization of the brake system.
- Make sure that the brake caliper is not hanging on the brake hose.
- Don't press the brake pedal after the brake caliper has been removed. As a result, the piston can fall out from the brake cylinder, and brake fluid leakage and depressurization of the system may occur.
- Check the brake caliper bracket, brake caliper guide pins and boots. Clean them. Replace, if necessary.

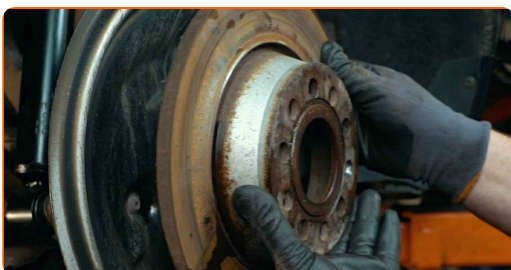
16 Clean the brake disc fastener. Use a wire brush. Use WD-40 spray.



17 Unscrew the brake disc fastening. Use Torx T30. Use an impact screwdriver.



18 Remove the brake disc. Use a rubber mallet.



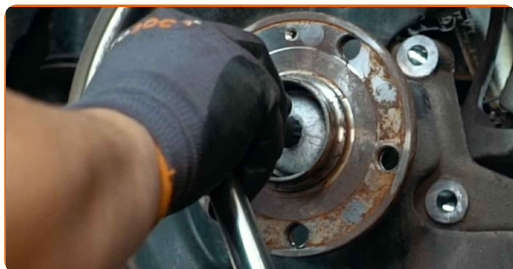
19 Remove the hub bearing protection cap. Use a hammer. Use a crowbar.



Please note!

- Some cars are not equipped with wheel hub caps.

20 Unscrew the hub bearing mounting. Use XZN #16. Use a tap wrench.



21 Remove the fastening bolt.



22 Remove the hub and the bearing together, since they are a sealed unit.



23 Clean the hub bearing mounting seat. Use a wire brush. Use all-purpose cleaning spray.



24 Install the new wheel hub with a bearing. Use a bush and bearing driver set. Use a hammer.



25 Treat the fasteners of the wheel hub bearing. Use a sealant.



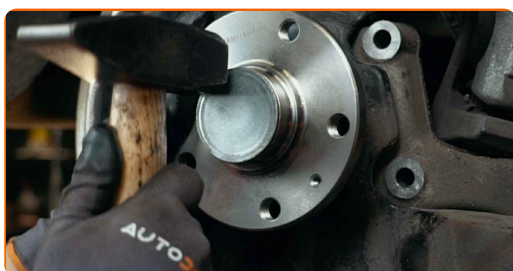
26 Install the fastening bolt.



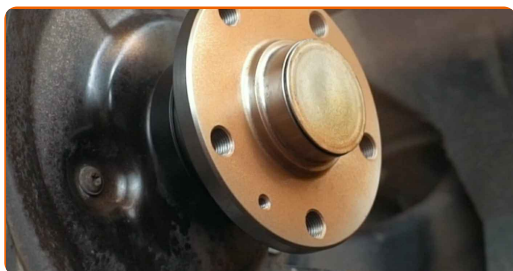
27 Tighten the fastener of the wheel hub bearing. Use XZN #18. Use a torque wrench. Tighten it to 200 Nm torque.



28 Install the hub bearing protection cap. Use a hammer.



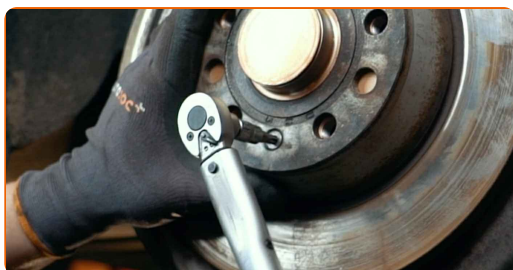
29 Treat the hub where it contacts the brake disk. Use copper grease.



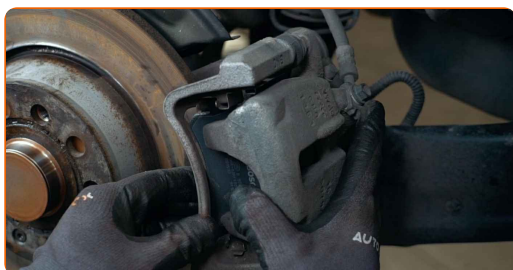
30 Install the brake disc.



31 Tighten the brake disc fastening. Use Torx T30. Use a torque wrench. Tighten it to 4 Nm torque.



32 Install the brake caliper together with its bracket.



33

Tighten the brake caliper bracket. Use XZN #14. Use a torque wrench. Tighten it to 90 Nm torque. +90°

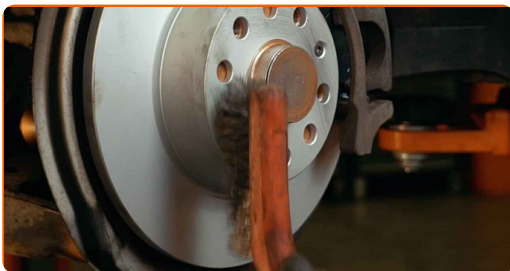


AUTODOC recommends:

- Important! Be sure to use new fasteners.

34

Clean the wheel rim mounting seat. Use a wire brush.



35

Treat the surface where the brake disc contacts the wheel rim. Use copper grease.



36

Clean the brake disk surface. Use a brake cleaner.



AUTODOC recommends:

- Replacement: wheel bearing – SKODA SUPERB Estate (3T5). After applying the spray, wait a few minutes.

37

Install the wheel.

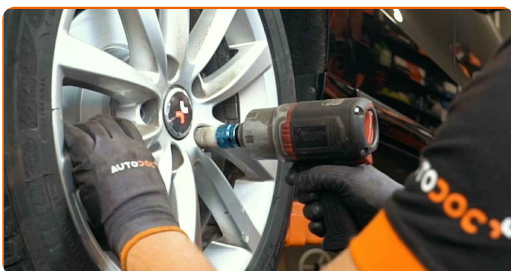


AUTODOC recommends:

- Warning! To avoid injury, hold the wheel while screwing in the fastening bolts on the car. SKODA SUPERB Estate (3T5)

38

Screw in the wheel bolts. Use wheel impact socket #17.



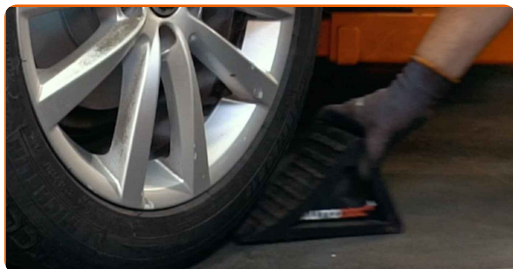
39

Lower the car and working in a cross order, tighten the wheel bolts. Use wheel impact socket #17. Use a torque wrench. Tighten it to 120 Nm torque.



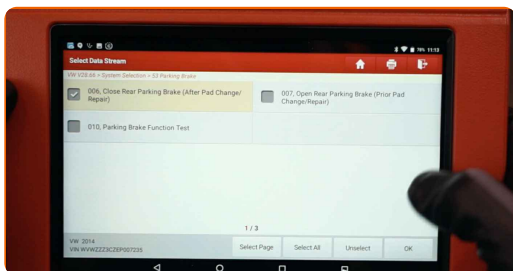
40

Remove the jacks and chocks.



41

Deactivate the service mode of the parking brake system. Disconnect the scan and service tool.

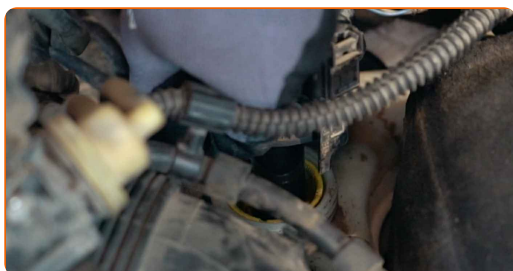


Replacement: wheel bearing – SKODA SUPERB Estate (3T5). Tip from AUTODOC:

- Check the brake fluid level in the expansion tank and refill if necessary.

42

Tighten the brake fluid reservoir cap.



43

Install the engine solenoid valve bracket. Use Torx T27. Use a ratchet wrench.



44

Close the hood.

WELL DONE! 

[VIEW MORE TUTORIALS](#)

AUTODOC – TOP QUALITY AND AFFORDABLE CAR PARTS ONLINE

AUTODOC MOBILE APP: GREAT DEALS AND CONVENIENT SHOPPING



+ AUTODOC

GET IT ON
Google Play

 Download on the
App Store

Download

A GREAT SELECTION OF SPARE PARTS FOR YOUR CAR

WHEEL BEARING: A WIDE SELECTION

DISCLAIMER:

The document contains only general recommendations that may be useful for you when you perform repair or replacement work. AUTODOC shall not be liable for any loss, injury, damage of property occurring in the repair or replacement process due to incorrect use or misinterpretation of the provided information.

AUTODOC shall not be liable for any possible mistakes and uncertainties in this guide. The information provided is for information purposes only and cannot replace advice from specialists.

AUTODOC shall not be liable for incorrect or hazardous usage of equipment, tools and car parts. AUTODOC strongly recommends to be careful and observe the safety rules when performing repair or replacement works. Remember: usage of low quality auto parts does not guarantee you the appropriate level of road safety.

© Copyright 2022 – All the contents of this website, in particular texts, photographs and graphics, are protected by copyright. All rights, including reproduction, publication, editing and translation rights, are reserved by AUTODOC GmbH.