



How to change pollen  
filter on **SKODA**  
**ROOMSTER Praktik (5J)**  
– replacement guide

### SIMILAR VIDEO TUTORIAL



This video shows the replacement procedure of a similar car part on another vehicle

#### **Important!**

This replacement procedure can be used for:

SKODA ROOMSTER Praktik (5J) 1.2 TSI, SKODA ROOMSTER Praktik (5J) 1.2 TDI, SKODA ROOMSTER Praktik (5J) 1.6 TDI, SKODA ROOMSTER Praktik (5J) 1.2, SKODA ROOMSTER Praktik (5J) 1.4, SKODA ROOMSTER Praktik (5J) 1.4 TDI

The steps may slightly vary depending on the car design.

This tutorial was created based on the replacement procedure for a similar car part on: SKODA Fabia I Combi (6Y5) 1.2

REPLACEMENT: POLLEN FILTER – SKODA ROOMSTER  
PRAKTIK (5J). TOOLS YOU MIGHT NEED:



• Torx bit T20

• Microfibre towel

[Buy tools](#)

Replacement: pollen filter – SKODA ROOMSTER Praktik (5J). AUTODOC experts recommend:

- Replace the cabin filter at least once every six months, in early spring and autumn seasons.
- Follow the terms, recommendations and requirements of the part operation provided by the manufacturer.
- If the air flow into the cabin has sharply reduced, replace the filter before a scheduled maintenance.
- All work should be done with the engine stopped.

**REPLACEMENT: POLLEN FILTER – SKODA ROOMSTER PRAKTIK (5J). RECOMMENDED SEQUENCE OF STEPS:**

1

Move the passenger seat fully backwards.



2

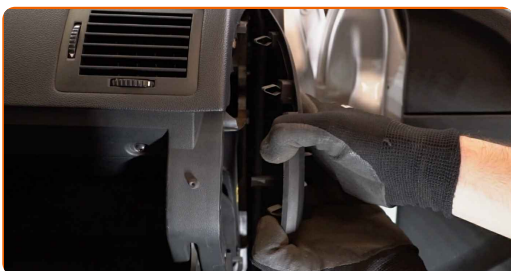
Spread a cloth under the cabin filter cover to protect the interior upholstery from getting dirty.



**3** Unscrew the glove box fastening screws. Use Torx T20.



**4** Pry up, carefully release from the fasteners and remove the side trim panel on the passenger side.



**5** Remove the glovebox.



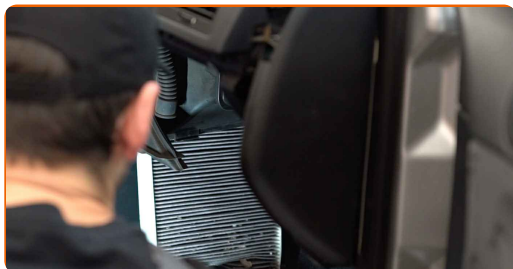
Replacement: pollen filter – SKODA ROOMSTER Praktik (5J). Tip from AUTODOC experts:

- Be careful to avoid damaging the glove compartment fasteners.

**6** Remove the cabin filter housing cover.



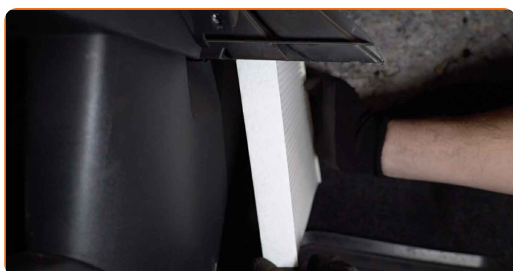
**7** Remove the cabin filter.



Replacement: pollen filter – SKODA ROOMSTER Praktik (5J). AUTODOC recommends:

- Do not attempt to clean and reuse the filter - it will affect the quality of air cleaning inside the car.

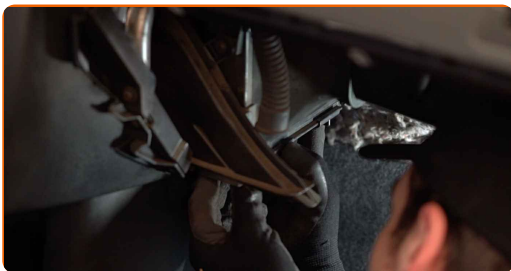
**8** Install the cabin filter to its mounting seat.



AUTODOC recommends:

- Replacement: pollen filter – SKODA ROOMSTER Praktik (5J). Be sure to position the filtering element correctly. Avoid misalignments.
- Follow the air flow direction arrow on the filter.

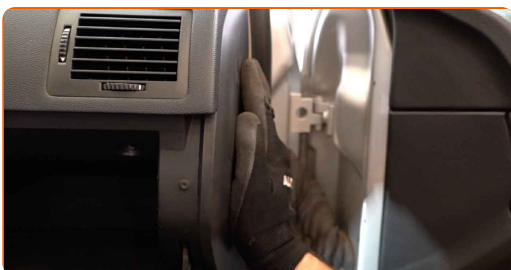
**9** Reinstall the cabin filter housing cover.



**10** Install the glove box.



**11** Install the side trim panel. Position the part using the guides and lock the fasteners.



**AUTODOC recommends:**

- Replacement: pollen filter – SKODA ROOMSTER Praktik (5J). Do not use excessive force during installation. This may damage the fasteners.

**12** Screw the glove box fastening screws. Use Torx T20.



**13** Return the passenger seat to its initial position.



**14** Switch on the ignition.

**15** Switch on the air conditioning system. This is necessary in order to make sure that the component operates properly.

**16** Switch off the ignition.

**WELL DONE!** 

**VIEW MORE TUTORIALS**



# AUTODOC – TOP QUALITY AND AFFORDABLE CAR PARTS ONLINE

**AUTODOC MOBILE APP: GREAT DEALS AND CONVENIENT SHOPPING**



**+ AUTODOC**

GET IT ON  
**Google Play**

 Download on the  
**App Store**

**Download**

**A GREAT SELECTION OF SPARE PARTS FOR YOUR CAR**

**POLLEN FILTER: A WIDE SELECTION**

## **DISCLAIMER:**

The document contains only general recommendations that may be useful for you when you perform repair or replacement work. AUTODOC shall not be liable for any loss, injury, damage of property occurring in the repair or replacement process due to incorrect use or misinterpretation of the provided information.

AUTODOC shall not be liable for any possible mistakes and uncertainties in this guide. The information provided is for information purposes only and cannot replace advice from specialists.

AUTODOC shall not be liable for incorrect or hazardous usage of equipment, tools and car parts. AUTODOC strongly recommends to be careful and observe the safety rules when performing repair or replacement works. Remember: usage of low quality auto parts does not guarantee you the appropriate level of road safety.

© Copyright 2023 – All the contents of this website, in particular texts, photographs and graphics, are protected by copyright. All rights, including reproduction, publication, editing and translation rights, are reserved by AUTODOC SE.