



How to change rear strut
mount on **SKODA Rapid**
Saloon (NA2) –
replacement guide

SIMILAR VIDEO TUTORIAL



This video shows the replacement procedure of a similar car part on another vehicle

Important!

This replacement procedure can be used for:
SKODA Rapid Saloon (NA2) 1.6

The steps may slightly vary depending on the car design.

This tutorial was created based on the replacement procedure for a similar car part on: SEAT Ibiza III Hatchback (6L) 1.4 16V

REPLACEMENT: STRUT MOUNT – SKODA RAPID SALOON (NA2). LIST OF THE TOOLS YOU'LL NEED:



- Wire brush
- WD-40 spray
- Copper grease
- Torque wrench
- Combination spanner #16
- Drive socket # 16
- Wheel impact socket #17
- Ratchet wrench
- Shock absorber socket #DD6
- Vice
- Hydraulic transmission jack
- Wheel chock

Buy tools

Replacement: strut mount – SKODA Rapid Saloon (NA2). Tip from AUTODOC experts:

- The replacement procedure is identical for the mounts of the right and left shock absorbers of the rear suspension.
- Both mounts of the rear shock struts should be replaced simultaneously.
- Be sure to replace all self-locking nuts and bolts during installation.
- Please note: all work on the car – SKODA Rapid Saloon (NA2) – should be done with the engine switched off.

CARRY OUT REPLACEMENT IN THE FOLLOWING ORDER:

1

Secure the wheels with chocks.



2

Loosen the wheel mounting bolts. Use wheel impact socket #17.



3

Raise the rear of the car and secure on supports.

4

Unscrew the wheel bolts.

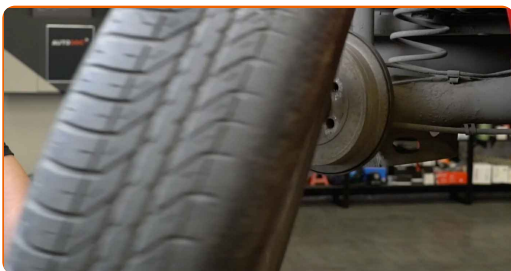


AUTODOC recommends:

- Important! Hold the wheel while unscrewing the fastening bolts. SKODA Rapid Saloon (NA2)

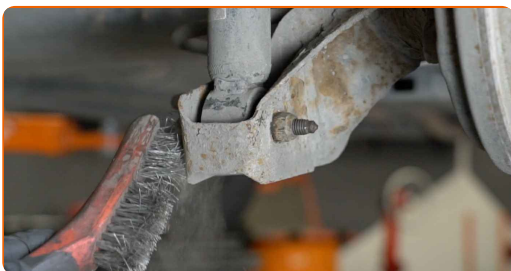
5

Remove the wheel.



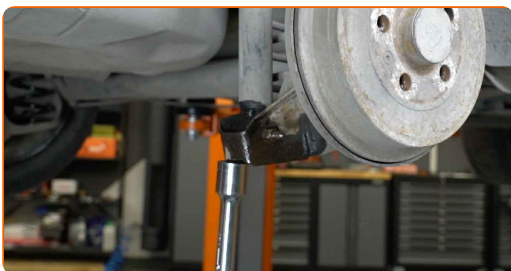
6

Clean the shock absorber fasteners. Use a wire brush. Use WD-40 spray.



7

Support the rear suspension beam. Use a hydraulic transmission jack.



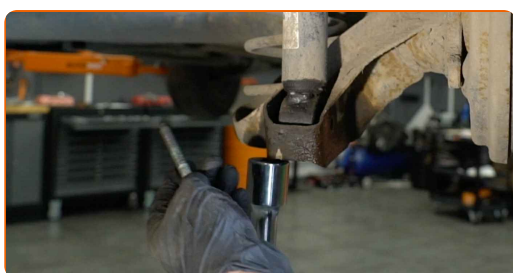
- 8** Unscrew the lower fastener of the shock absorber. Use a combination spanner #16. Use a drive socket #16. Use a ratchet wrench.



- 9** Unscrew the upper fastener of the shock absorber. Use a drive socket #16. Use a ratchet wrench.



- 10** Remove the fastening bolt.



- 11** Remove the mounting from under the rear axle beam.

Replacement: strut mount – SKODA Rapid Saloon (NA2). Professionals recommend:

- Lower the hydraulic transmission jack smoothly, without jerks, to avoid damaging assemblies and mechanisms.

12 Remove the shock absorber.



13 Remove the protective cap of the shock absorber mount.



14 Grip the shock absorber in a vice.



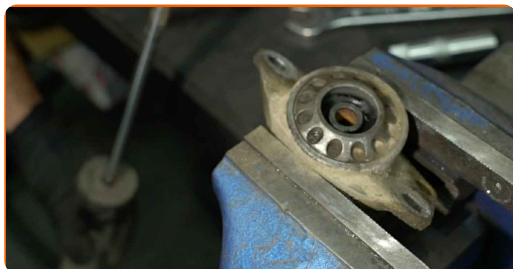
15 Clean the shock absorber rod fastener. Use a wire brush. Use WD-40 spray.



16 Remove the shock absorber piston rod fastening. Use a drive socket #16. Use a shock absorber socket DDN⁶. Use a ratchet wrench.



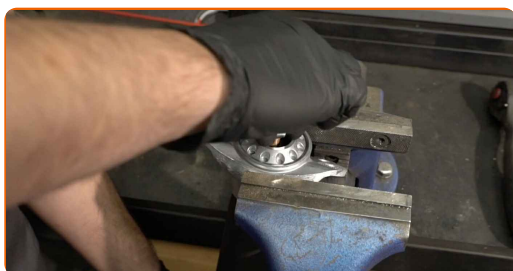
17 Remove the shock absorber mount, boot and bump stop.



Replacement: strut mount – SKODA Rapid Saloon (NA2). Tip from AUTODOC:

- Examine the shock absorber dust cap and the bump stop. Replace them if necessary.

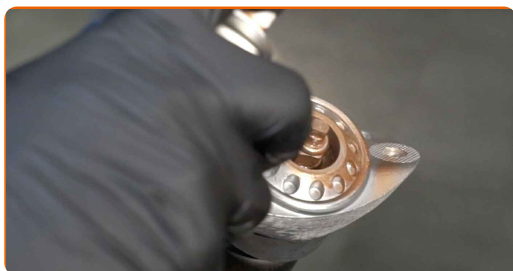
18 Install the new mount, boot, and bump stop on the shock absorber.



19 Tighten the shock absorber rod nut. Use a drive socket #16. Use a shock absorber socket DDN[®]6. Use a torque wrench. Tighten it to 25 nm torque.



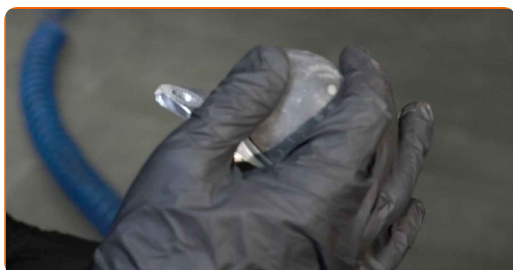
20 Treat the shock absorber rod fastener. Use copper grease.



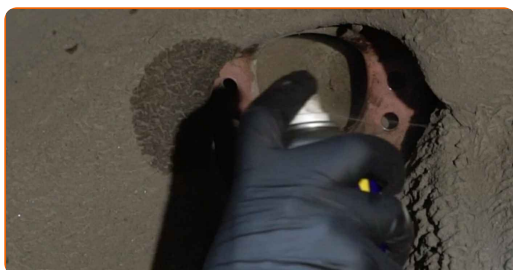
21 Release the vice and take out the shock absorber.



22 Install the protective cap of the shock absorber mount.

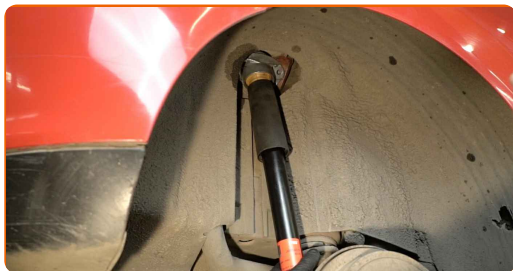


23 Clean the shock absorber mounting seats. Use a wire brush. Use WD-40 spray.



24 Treat the shock absorber mounting seats. Use copper grease.

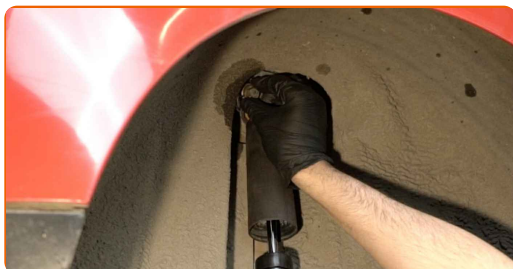
25 Place the shock absorber in the wheel arch and secure it.



AUTODOC recommends:

- SKODA Rapid Saloon (NA2) – To avoid injury, hold the shock absorber while screwing in the fastening bolts.

26 Screw the upper fastener of the shock absorber. Use a drive socket #16. Use a ratchet wrench.



Replacement: strut mount – SKODA Rapid Saloon (NA2). AUTODOC experts recommend:

- Install the shock absorber mount using the center hole as a guide.

- 27** Tighten the top shock absorber fastening. Use a drive socket #16. Use a torque wrench. Tighten it to 30 Nm torque.+90°



AUTODOC recommends:

- Important! Be sure to use new fasteners.

- 28** Install the fastening bolt.



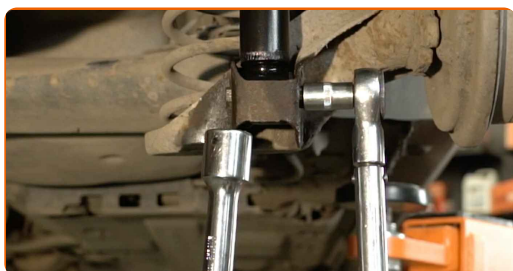
- 29** Screw in the lower fastener of the shock absorber. Use a drive socket #16. Use a ratchet wrench.



- 30** Support the rear suspension beam. Use a hydraulic transmission jack.



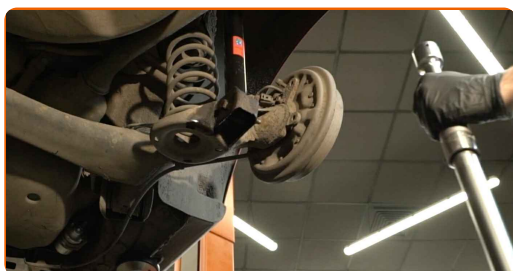
- 31** Tighten the lower fastener of the shock absorber. Use a combination spanner #16. Use a drive socket #16. Use a torque wrench. Tighten it to 40 Nm torque.+90°



AUTODOC recommends:

- Important! Be sure to use new fasteners.

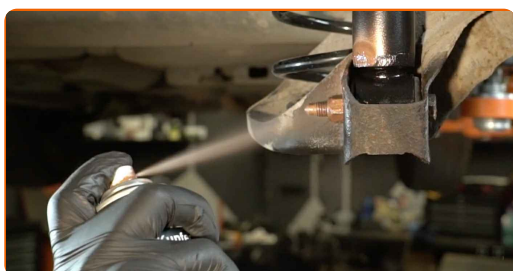
- 32** Remove the mounting from under the rear axle beam.



AUTODOC recommends:

- SKODA Rapid Saloon (NA2) – Do not lower the transmission jack sharply to avoid damaging components and mechanisms of the car.

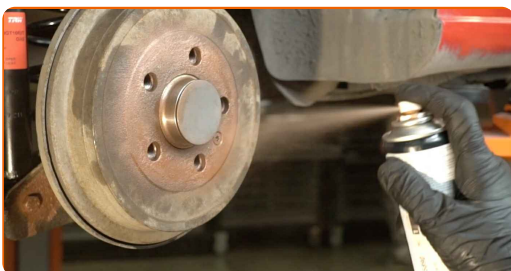
- 33** Treat the shock absorber fasteners. Use copper grease.



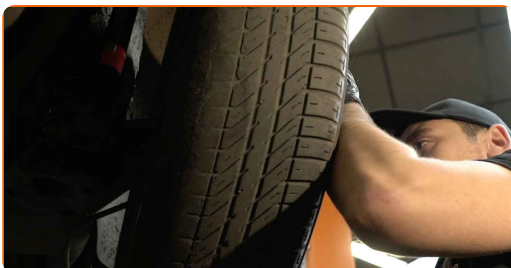
34 Clean the wheel rim mounting seat. Use a wire brush.



35 Treat the surface where the wheel rim contacts the brake drum. Use copper grease.



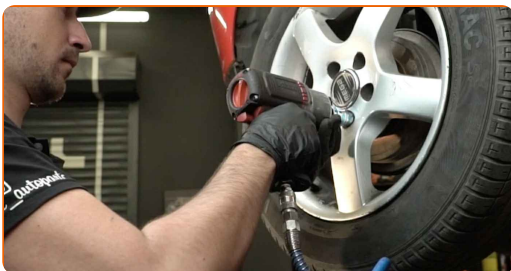
36 Install the wheel.



Replacement: strut mount – SKODA Rapid Saloon (NA2). Tip from AUTODOC:

- To avoid injury, hold up the wheel when screwing in the fastening bolts.

37 Screw in the wheel bolts. Use wheel impact socket #17.



- 38** Lower the car and working in a cross order, tighten the wheel bolts. Use wheel impact socket #17. Use a torque wrench. Tighten it to 120 Nm torque.



- 39** Remove the jacks and chocks.



WELL DONE! 

VIEW MORE TUTORIALS

AUTODOC – TOP QUALITY AND AFFORDABLE CAR PARTS ONLINE

AUTODOC MOBILE APP: GREAT DEALS AND CONVENIENT SHOPPING



+ AUTODOC

GET IT ON
 **Google Play**

Download on the
 **App Store**

Download

A GREAT SELECTION OF SPARE PARTS FOR YOUR CAR

STRUT MOUNT: A WIDE SELECTION

DISCLAIMER:

The document contains only general recommendations that may be useful for you when you perform repair or replacement work. AUTODOC shall not be liable for any loss, injury, damage of property occurring in the repair or replacement process due to incorrect use or misinterpretation of the provided information.

AUTODOC shall not be liable for any possible mistakes and uncertainties in this guide. The information provided is for information purposes only and cannot replace advice from specialists.

AUTODOC shall not be liable for incorrect or hazardous usage of equipment, tools and car parts. AUTODOC strongly recommends to be careful and observe the safety rules when performing repair or replacement works. Remember: usage of low quality auto parts does not guarantee you the appropriate level of road safety.

© Copyright 2023 – All the contents of this website, in particular texts, photographs and graphics, are protected by copyright. All rights, including reproduction, publication, editing and translation rights, are reserved by AUTODOC SE.