



How to change rear
wheel bearing on **SKODA**
Fabia II Combi (545) –
replacement guide

SIMILAR VIDEO TUTORIAL



This video shows the replacement procedure of a similar car part on another vehicle

Important!

This replacement procedure can be used for:

SKODA Fabia II Combi (545) 1.2 12V, SKODA Fabia II Combi (545) 1.2, SKODA Fabia II Combi (545) 1.4, SKODA Fabia II Combi (545) 1.6, SKODA Fabia II Combi (545) 1.4 TDI, SKODA Fabia II Combi (545) 1.9 TDI, SKODA Fabia II Combi (545) 1.2 TSI, SKODA Fabia II Combi (545) 1.6 TDI, SKODA Fabia II Combi (545) 1.4 TSI RS, SKODA Fabia II Combi (545) 1.2 TDI, SKODA Fabia II Combi (545) 1.2 LPG, SKODA Fabia II Combi (545) 1.4 LPG

The steps may slightly vary depending on the car design.

This tutorial was created based on the replacement procedure for a similar car part on: SEAT Ibiza III Hatchback (6L) 1.4 16V

REPLACEMENT: WHEEL BEARING – SKODA FABIA II COMBI (545). TOOLS YOU MIGHT NEED:



- Wire brush
- WD-40 spray
- All-purpose cleaning spray
- Copper grease
- Torque wrench
- Combination spanner #10
- 12-point socket #30
- Torx bit T30
- Wheel impact socket #17
- Ratchet wrench
- Hammer
- Tap wrench
- Crow bar
- Rubber mallet
- Wheel chock

Buy tools

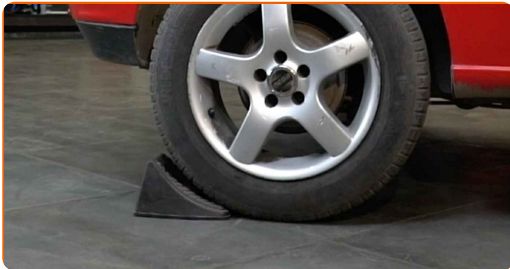
Replacement: wheel bearing – SKODA Fabia II Combi (545). AUTODOC experts recommend:

- Do not re-use the bearing assembly of your SKODA Fabia II Combi (545) car.
- The wheel hub bearing replacement procedure is identical for both wheels on the same axle.
- All work should be done with the engine stopped.

REPLACEMENT: WHEEL BEARING – SKODA FABIA II COMBI (545). RECOMMENDED SEQUENCE OF STEPS:

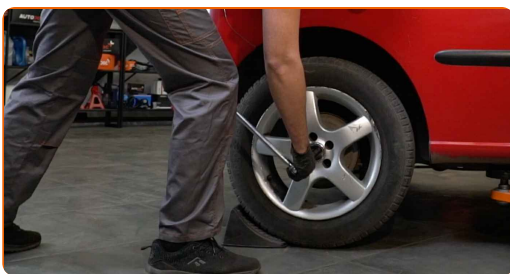
1

Secure the wheels with chocks.



2

Loosen the wheel mounting bolts. Use wheel impact socket #17.



3

Raise the rear of the car and secure on supports.

4

Unscrew the wheel bolts.



AUTODOC recommends:

- Warning! To avoid injury, hold the wheel while unscrewing the fastening bolts.
SKODA Fabia II Combi (545)

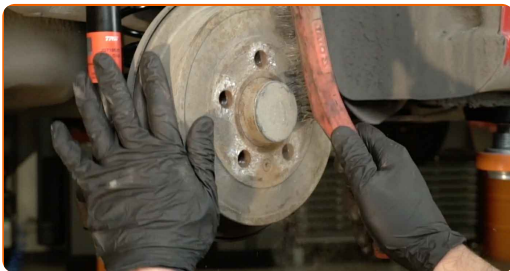
5

Remove the wheel.



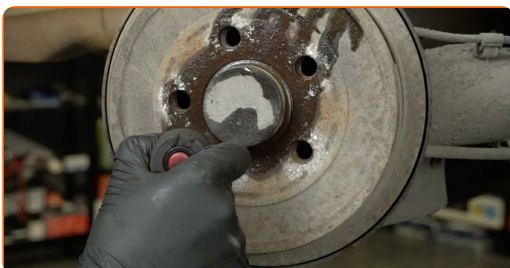
6

Clean the brake drum fasteners. Use a wire brush. Use WD-40 spray.



7

Unscrew the brake drum fastening. Use Torx T30. Use a ratchet wrench.



8 Open the car door.



9 Remove the parking brake lever trim cover.



10 Loosen the parking brake cable. Use a combination spanner #10.



11 Remove the brake drum.



Replacement: wheel bearing – SKODA Fabia II Combi (545). Tip from AUTODOC:

- Examine the brake drum. Replace it if necessary.

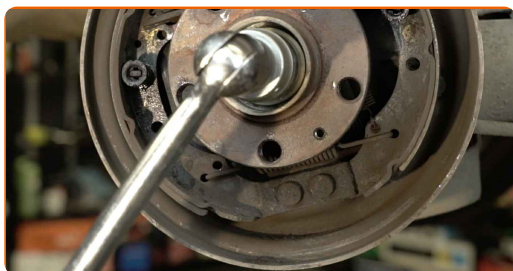
12 Remove the hub bearing protection cap. Use a crowbar. Use a hammer.



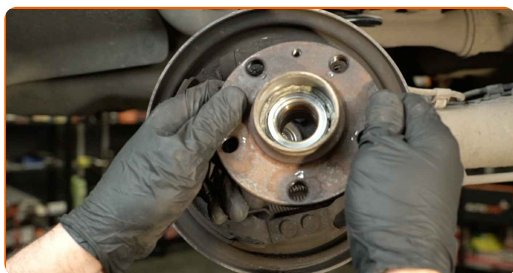
AUTODOC recommends:

- Some cars are not equipped with wheel hub caps.

13 Unscrew the wheel hub axle nut. Use 12-point socket No.30. Use a tap wrench.



14 Remove the hub and the bearing together, since they are a sealed unit.



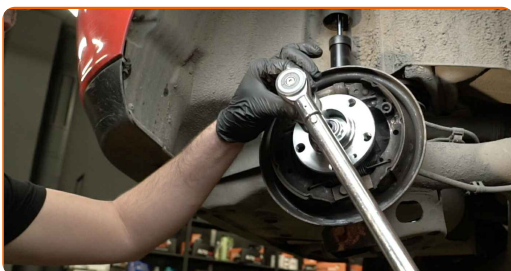
15 Clean the hub bearing mounting seat. Use all-purpose cleaning spray.



16 Install the new wheel hub with a bearing.



17 Tighten the hub. Use 12-point socket No.30. Use a torque wrench. Tighten it to 175 nm torque.



Replacement: wheel bearing – SKODA Fabia II Combi (545). Professionals recommend:

- The wheel bearing unit must not tilt on the axle pin.

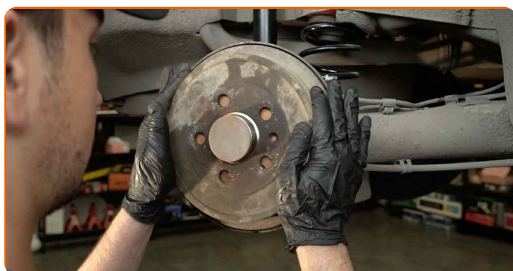
18 Install the hub bearing protection cap. Use a rubber mallet.



19 Treat the hub where it contacts the brake disk. Use copper grease.



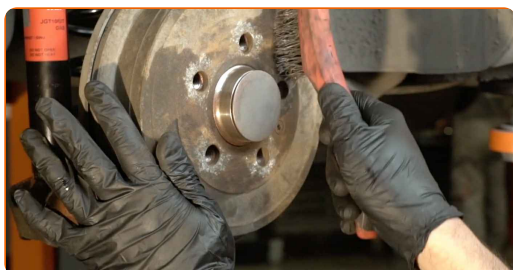
20 Install a brake drum.



21 Tighten the brake drum fasteners. Use Torx T30. Use a torque wrench. Tighten it to 4 Nm torque.



22 Clean the wheel rim mounting seat. Use a wire brush.



23

Treat the surface where the wheel rim contacts the brake drum. Use copper grease.



24

Install the wheel.



AUTODOC recommends:

- Important! Hold the wheel while screwing in the fastening bolts. SKODA Fabia II Combi (545)

25

Screw in the wheel bolts. Use wheel impact socket #17.



26

Lower the car.

27 Remove the jacks and chocks.



28 Adjust the parking brake cable tension. Use a combination spanner #10.



29 Install the parking brake lever trim cover.



30 Close the car door.



- 31** Tighten the wheel bolts using a criss-cross pattern. Use wheel impact socket #17. Use a torque wrench. Tighten it to 120 Nm torque.



WELL DONE! 

[VIEW MORE TUTORIALS](#)

AUTODOC – TOP QUALITY AND AFFORDABLE CAR PARTS ONLINE

AUTODOC MOBILE APP: GREAT DEALS AND CONVENIENT SHOPPING



A GREAT SELECTION OF SPARE PARTS FOR YOUR CAR

WHEEL BEARING: A WIDE SELECTION

(i) DISCLAIMER:

The document contains only general recommendations that may be useful for you when you perform repair or replacement work. AUTODOC shall not be liable for any loss, injury, damage of property occurring in the repair or replacement process due to incorrect use or misinterpretation of the provided information.

AUTODOC shall not be liable for any possible mistakes and uncertainties in this guide. The information provided is for information purposes only and cannot replace advice from specialists.

AUTODOC shall not be liable for incorrect or hazardous usage of equipment, tools and car parts. AUTODOC strongly recommends to be careful and observe the safety rules when performing repair or replacement works. Remember: usage of low quality auto parts does not guarantee you the appropriate level of road safety.

© Copyright 2022 – All the contents of this website, in particular texts, photographs and graphics, are protected by copyright. All rights, including reproduction, publication, editing and translation rights, are reserved by AUTODOC GmbH.