



How to change rear
wheel bearing on **SEAT**
TOLEDO I (1L) –
replacement guide

SIMILAR VIDEO TUTORIAL



This video shows the replacement procedure of a similar car part on another vehicle

Important!

This replacement procedure can be used for:

SEAT TOLEDO I (1L) 1.9 D, SEAT TOLEDO I (1L) 1.9 TD, SEAT TOLEDO I (1L) 1.8 16V,
SEAT TOLEDO I (1L) 2.0 i, SEAT TOLEDO I (1L) 1.8 i, SEAT TOLEDO I (1L) 2.0 i 16V,
SEAT TOLEDO I (1L) 1.9 TDI, SEAT TOLEDO I (1L) 1.6 i

The steps may slightly vary depending on the car design.

This tutorial was created based on the replacement procedure for a similar car part on: VW Polo Hatchback (6N1) 1.0

REPLACEMENT: WHEEL BEARING – SEAT TOLEDO I (1L). TOOLS YOU MIGHT NEED:



- Wire brush
- All-purpose cleaning spray
- Multipurpose grease
- Copper grease
- Torque wrench
- Combination spanner #10
- Drive socket # 24
- Wheel impact socket #17
- Bush and bearing driver set
- 3-Arm Gear Puller
- Ratchet wrench
- Hammer
- Crow bar
- Wheel chock

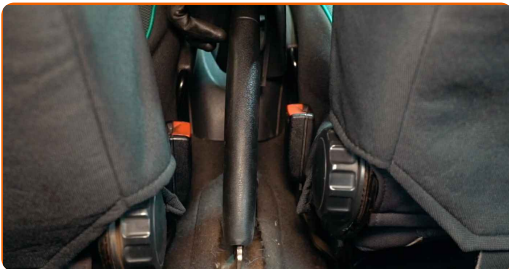
Buy tools

AUTODOC recommends:

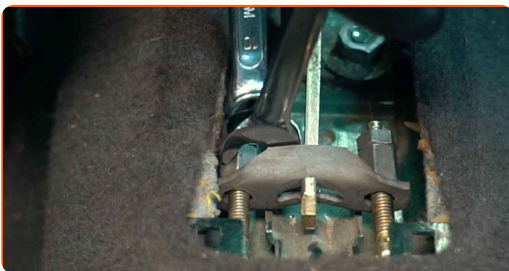
- Do not re-use the bearing assembly of your SEAT TOLEDO I (1L) car.
- The wheel hub bearing replacement procedure is identical for both wheels on the same axle.
- Please note: all work on the car – SEAT TOLEDO I (1L) – should be done with the engine switched off.

CARRY OUT REPLACEMENT IN THE FOLLOWING ORDER:

1 Engage the parking brake lever.



2 Loosen the parking brake cable. Use a combination spanner #10.



3 Secure the wheels with chocks.

4 Loosen the wheel mounting bolts. Use wheel impact socket #17.



5 Raise the rear of the car and secure on supports.

6 Unscrew the wheel bolts.



AUTODOC recommends:

- Warning! To avoid injury, hold the wheel while unscrewing the fastening bolts.
SEAT TOLEDO I (1L)

7 Remove the wheel.



8

Clean the brake drum. Use a wire brush. Use all-purpose cleaning spray.



9

Remove the wheel hub nut cap. Use a crowbar. Use a hammer.



10

Remove the cotter pin securing the hub nut. Use a crowbar. Use a hammer.



11

Unscrew the hub nut. Use a drive socket #24. Use a ratchet wrench.



12 Remove the brake drum assembled with the wheel hub bearing.



Replacement: wheel bearing – SEAT TOLEDO I (1L). Tip:

- Examine the brake drum. Replace it if necessary.

13 Clean the hub bearing mounting seat. Use all-purpose cleaning spray.



14 Remove the hub bearing mounting. Use a crowbar.

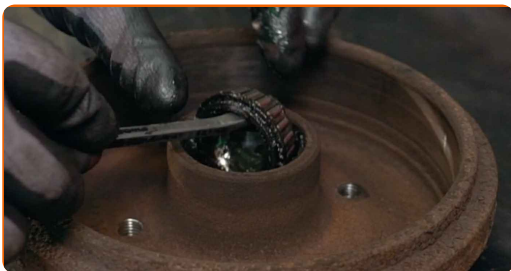


15 Remove the inner oil seal of the wheel bearing. Use a crowbar.



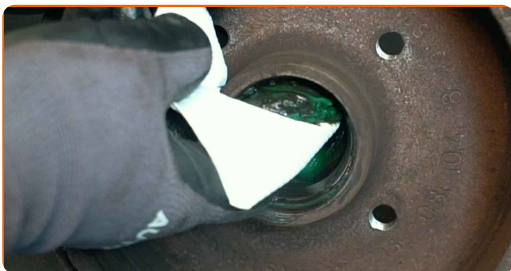
16

Remove the hub bearing mounting. Use a crowbar.



17

Clean the hub bearing mounting seat.



18

Remove the inner race of the wheel bearing from the brake drum. Use 3-Arm Gear Puller. Use a bush and bearing driver set.



19

Remove the inner race of the wheel bearing from the brake drum. Use a bush and bearing driver set.



- 20 Install the new inner race of the wheel bearing into the brake drum. Use a bush and bearing driver set. Use a hammer.



- 21 Install the new inner race of the wheel bearing into the brake drum. Use a bush and bearing driver set. Use a hammer.



- 22 Treat the inner race and the wheel bearing. Use a multipurpose grease.



- 23 Install a new hub bearing and secure it.



24

Press in the inner oil seal of the wheel bearing. Use a bush and bearing driver set. Use a hammer.

**25**

Install a new hub bearing and secure it.

**26**

Treat the wheel hub in the area where it contacts the brake drum. Use a multipurpose grease.

**27**

Install the brake drum assembled with the wheel hub bearing.

**28**

Install the wheel.



AUTODOC recommends:

- Warning! To avoid injury, hold the wheel while screwing in the fastening bolts on the car. SEAT TOLEDO I (1L)

29

Screw in the wheel bolts. Use wheel impact socket #17.



30

Screw on the hub nut. Use a drive socket #24. Use a ratchet wrench.



Replacement: wheel bearing – SEAT TOLEDO I (1L). Professionals recommend:

- Align the brake drum.

31

Unscrew the wheel bolts. Use wheel impact socket #17.



AUTODOC recommends:

- Important! Hold the wheel while unscrewing the fastening bolts. SEAT TOLEDO I (1L)

32

Remove the wheel.



33

Install a new hub nut cotter pin. Use a crowbar. Use a hammer.



34

Install the cap of the hub nut. Use a hammer.

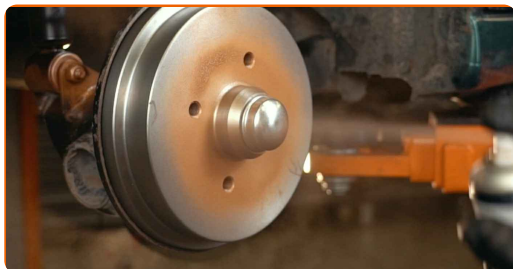


35

Clean the wheel rim mounting seat. Use a wire brush.



36 Treat the surface where the wheel rim contacts the brake drum. Use copper grease.



37 Install the wheel.



AUTODOC recommends:

- Important! Hold the wheel while screwing in the fastening bolts. SEAT TOLEDO I (1L)

38 Screw in the wheel bolts. Use wheel impact socket #17.



39 Adjust the parking brake cable tension. Use a combination spanner #10.



40

Release the parking brake lever.



41

Lower the car and working in a cross order, tighten the wheel bolts. Use wheel impact socket #17. Use a torque wrench. Tighten it to 110 Nm torque.



42

Remove the jacks and chocks.



WELL DONE! 

VIEW MORE TUTORIALS

AUTODOC – TOP QUALITY AND AFFORDABLE CAR PARTS ONLINE

AUTODOC MOBILE APP: GREAT DEALS AND CONVENIENT SHOPPING



+ AUTODOC

GET IT ON
Google Play

 Download on the
App Store

Download

A GREAT SELECTION OF SPARE PARTS FOR YOUR CAR

WHEEL BEARING: A WIDE SELECTION

DISCLAIMER:

The document contains only general recommendations that may be useful for you when you perform repair or replacement work. AUTODOC shall not be liable for any loss, injury, damage of property occurring in the repair or replacement process due to incorrect use or misinterpretation of the provided information.

AUTODOC shall not be liable for any possible mistakes and uncertainties in this guide. The information provided is for information purposes only and cannot replace advice from specialists.

AUTODOC shall not be liable for incorrect or hazardous usage of equipment, tools and car parts. AUTODOC strongly recommends to be careful and observe the safety rules when performing repair or replacement works. Remember: usage of low quality auto parts does not guarantee you the appropriate level of road safety.

© Copyright 2022 – All the contents of this website, in particular texts, photographs and graphics, are protected by copyright. All rights, including reproduction, publication, editing and translation rights, are reserved by AUTODOC GmbH.