



How to change engine  
thermostat on **SEAT**  
**TOLEDO I (1L)** –  
replacement guide

## SIMILAR VIDEO TUTORIAL



This video shows the replacement procedure of a similar car part on another vehicle

### Important!

This replacement procedure can be used for:

SEAT TOLEDO I (1L) 1.6 i, SEAT TOLEDO I (1L) 1.8 16V, SEAT TOLEDO I (1L) 1.9 D,  
SEAT TOLEDO I (1L) 1.9 TD, SEAT TOLEDO I (1L) 1.8 i, SEAT TOLEDO I (1L) 2.0 i,  
SEAT TOLEDO I (1L) 1.9 TDI

The steps may slightly vary depending on the car design.

This tutorial was created based on the replacement procedure for a similar car part on: VW GOLF II (19E, 1G1) 1.6

REPLACEMENT: ENGINE THERMOSTAT – SEAT TOLEDO I (1L). TOOLS YOU MIGHT NEED:



- Torque wrench
- Drive socket # 7
- Drive socket # 10
- Drive socket # 13
- Ratchet wrench
- Fluid container
- Funnel
- Fender cover

**Buy tools**

Replacement: engine thermostat – SEAT TOLEDO I (1L). Tip from AUTODOC:

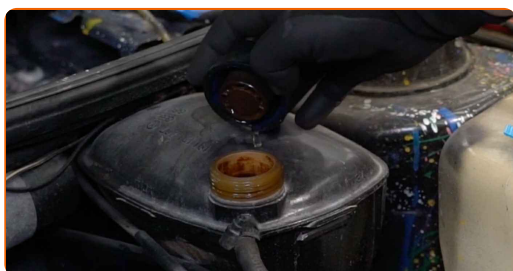
- Check the condition of the coolant every time you replace the thermostat. Change the coolant if necessary.
- Please note: all work on the car – SEAT TOLEDO I (1L) – should be done with the engine switched off.

**CARRY OUT REPLACEMENT IN THE FOLLOWING ORDER:**

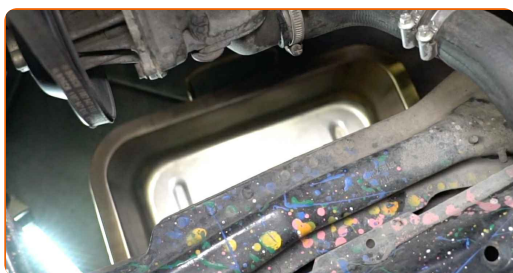
**1** Open the hood.

**2** Use a fender protection cover to prevent damaging paintwork and plastic parts of the car.

**3** Unscrew the coolant reservoir cap.



**4** Prepare a container for fluids.



**5** Loosen the coolant hose clamp. Use a drive socket #7. Use a ratchet wrench.



**6** Detach the coolant hose.



**7** Drain the coolant from the engine.



**Replacement: engine thermostat – SEAT TOLEDO I (1L). Tip:**

- Caution! The coolant can be very hot.
- Wear gloves to prevent contact with hot liquid.
- All work should be done with the engine stopped.
- Wait until the coolant has completely flowed out of the drain hole.

8

Unscrew the thermostat housing fasteners. Use a drive socket #13. Use a ratchet wrench.



9

Remove the thermostat housing.



**AUTODOC recommends:**

- Replacement: engine thermostat – SEAT TOLEDO I (1L). Do not use excessive force when removing the part as this may damage it.

10

Remove the thermostat.



**AUTODOC recommends:**

- Replacement: engine thermostat – SEAT TOLEDO I (1L). Do not use excessive force when removing the part as this may damage it.
- Caution! Coolant may leak out of the coolant lines and thermostat housing.

**11**

Install a new thermostat.



**Replacement: engine thermostat – SEAT TOLEDO I (1L). Tip:**

- When installing, do not use excessive force to avoid damage to the part.

**12**

Install the thermostat housing.



- 13 Tighten the thermostat housing fasteners. Use a drive socket #10. Use a torque wrench. Tighten it to 13 nm torque.



- 14 Attach the coolant hose.



- 15 Secure the coolant hose clamp. Use a drive socket #7. Use a ratchet wrench.



- 16 Remove the coolant reservoir cap.

- 17 Insert the funnel.





**18**

Pour coolant in the coolant reservoir.



**Replacement: engine thermostat – SEAT TOLEDO I (1L). Tip from AUTODOC:**

- Only use the coolant recommended by the manufacturer.
- The coolant level should be at the MAX mark.
- Wait until the air goes out of the system.

**19**

Run the engine for a few minutes. This should be done in order to remove residual air from the cooling system and to check if the components are operating correctly.

**20**

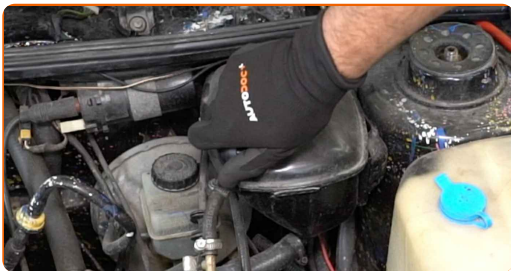
Shut off the engine.

**21**

Install the coolant reservoir cap.

**22**

Screw on the coolant reservoir cap.



**23**

Remove the fender protection cover.

24

Close the hood.

**WELL DONE!** 

**VIEW MORE TUTORIALS**

# AUTODOC – TOP QUALITY AND AFFORDABLE CAR PARTS ONLINE

**AUTODOC MOBILE APP: GREAT DEALS AND CONVENIENT SHOPPING**



**+ AUTODOC**

GET IT ON  
**Google Play**

 **Download on the App Store**

**Download**

**A GREAT SELECTION OF SPARE PARTS FOR YOUR CAR**

**ENGINE THERMOSTAT: A WIDE SELECTION**

## **DISCLAIMER:**

The document contains only general recommendations that may be useful for you when you perform repair or replacement work. AUTODOC shall not be liable for any loss, injury, damage of property occurring in the repair or replacement process due to incorrect use or misinterpretation of the provided information.

AUTODOC shall not be liable for any possible mistakes and uncertainties in this guide. The information provided is for information purposes only and cannot replace advice from specialists.

AUTODOC shall not be liable for incorrect or hazardous usage of equipment, tools and car parts. AUTODOC strongly recommends to be careful and observe the safety rules when performing repair or replacement works. Remember: usage of low quality auto parts does not guarantee you the appropriate level of road safety.

© Copyright 2022 – All the contents of this website, in particular texts, photographs and graphics, are protected by copyright. All rights, including reproduction, publication, editing and translation rights, are reserved by AUTODOC GmbH.